

SPECIFICATIONS

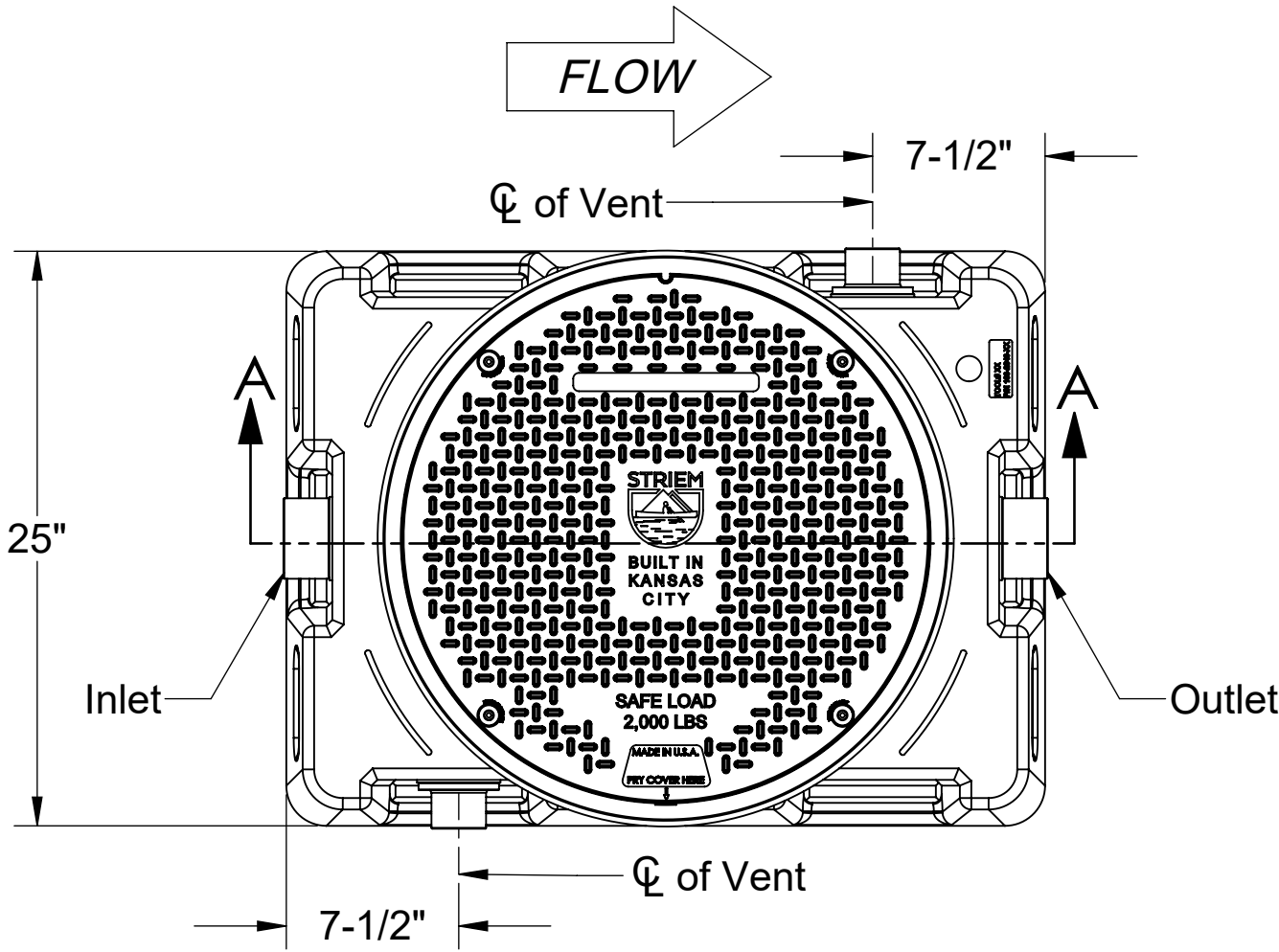
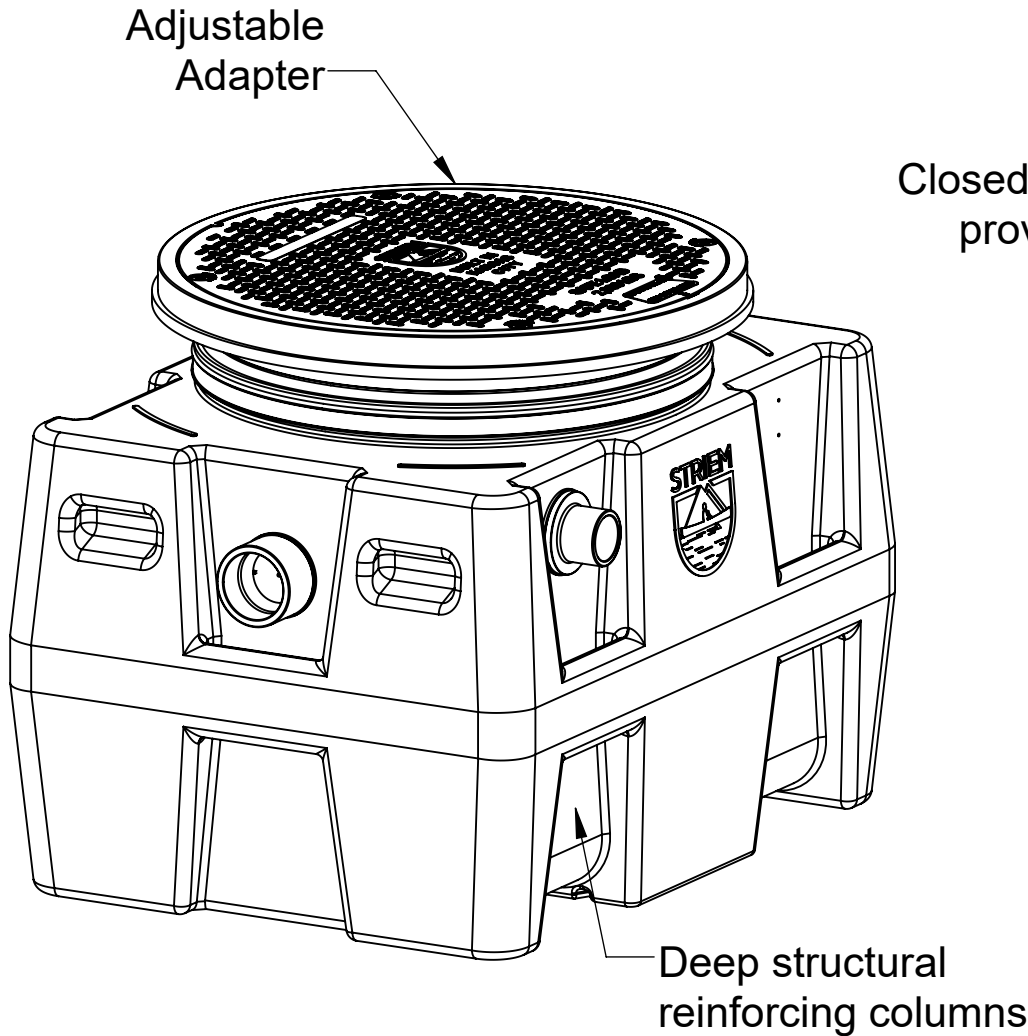
- 1. Liquid holding capacity: 38 Gallons
- 2. Unit weight w/std. cover: 77 Pounds
- 3. Composite cover: 2,000 lb capacity (standard).
- 4. Maximum operating temperature 140°F continuous.

NOTES

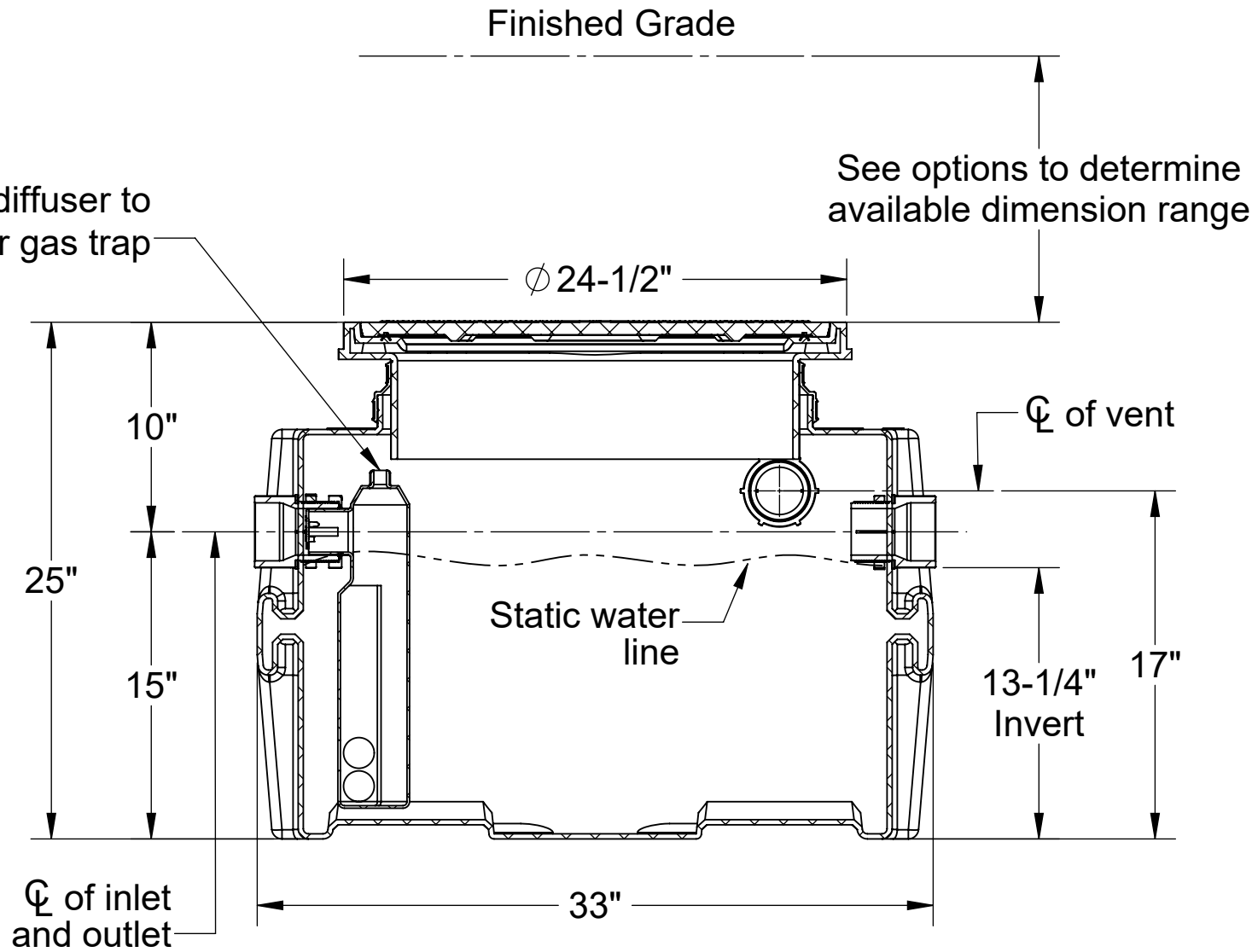
- 1. For gravity drainage applications only. Do not use for pressure applications.
- 2. 3/8" thick seamless medium density polyethylene walls.
- 3. Unit supplied with built-in adapter with up to 3-1/2" of adjustability. Additional risers available for deeper burial depth.
- 4. Cover placement allows full access to tank for proper maintenance.
- 5. Engineered inlet diffuser is removable to inspect/clean piping.
- 6. For on the-floor or buried applications.

ENGINEER SPECIFICATION GUIDE

Striem Lab Basin™ neutralization tank model LB-35 shall be lifetime guaranteed and Made in USA of seamless, rotationally-molded polyethylene with minimum 3/8" uniform wall thickness. Tank shall be furnished with inlets, outlets, (2) vent connections, cover, riser system, monitoring equipment and other modifications per jobsite-specific conditions and per engineer's specification.



TOP VIEW



SECTION "A-A"

Signature of Approval: _____
Company: _____
Date of Approval: _____
Specifying Engineer: _____
Engineering Firm: _____

PROPRIETARY AND CONFIDENTIAL
THE INFORMATION CONTAINED IN THIS DRAWING IS THE SOLE PROPERTY OF STRIEM, LLC. ANY REPRODUCTION IN PART OR AS A WHOLE WITHOUT THE WRITTEN PERMISSION OF STRIEM, LLC. IS PROHIBITED.

Directions: Complete steps 1-4 and submit signed with purchase order.

1. Choose Connection Types.

Inlet / Outlet	Size
<input type="checkbox"/> Plain End	<input type="checkbox"/> 2"
<input type="checkbox"/> Female Thread	<input type="checkbox"/> 3"
<input type="checkbox"/> Flanged	<input type="checkbox"/> 4"

Vent	Size
Plain End	<input type="checkbox"/> 2"
	<input type="checkbox"/> 3"

2. Diptube Location.

Diptube at: ☐ Inlet ☐ Outlet ☐ Both (Ohio Code)
(Provided on inlet if not specified)

3. TeleGlide Riser Options.

☐ SR24 - >3 1/2"-22"
☐ LR24 - >22"-37"

4. Additional Options.

☐ CC-1 - Command Center pH Monitoring Package
☐ SPK-A - Above Grade Sensor Placement Kit*
☐ SPK-B - Below Grade Sensor Placement Kit*
☐ 90%+ Calcium Carbonate Limestone (450 lbs.)

*Required with CC-1

SPECIFICATION SHEET

MODEL NUMBER:		LB-35	
DESCRIPTION:			
LAB BASIN SERIES POLYETHYLENE CHEMICAL WASTE TANK			
DWG BY: RS	DATE: 10/6/20	REV: 02	ECO:

Striem
3100 Brinkerhoff
Kansas City, KS 66115
Tel: 913-222-1500
Fax: 913-291-0457
www.striemco.com

Made in the U.S.A

