

SPECIFICATIONS

- 1. Liquid holding capacity: 250 Gallons
- 2. Unit weight w/std. cover: 230 Pounds
- 3. Highway rated composite cover: 16,000 lb. load rating.
- 4. Maximum operating temperature 140°F continuous.

NOTES

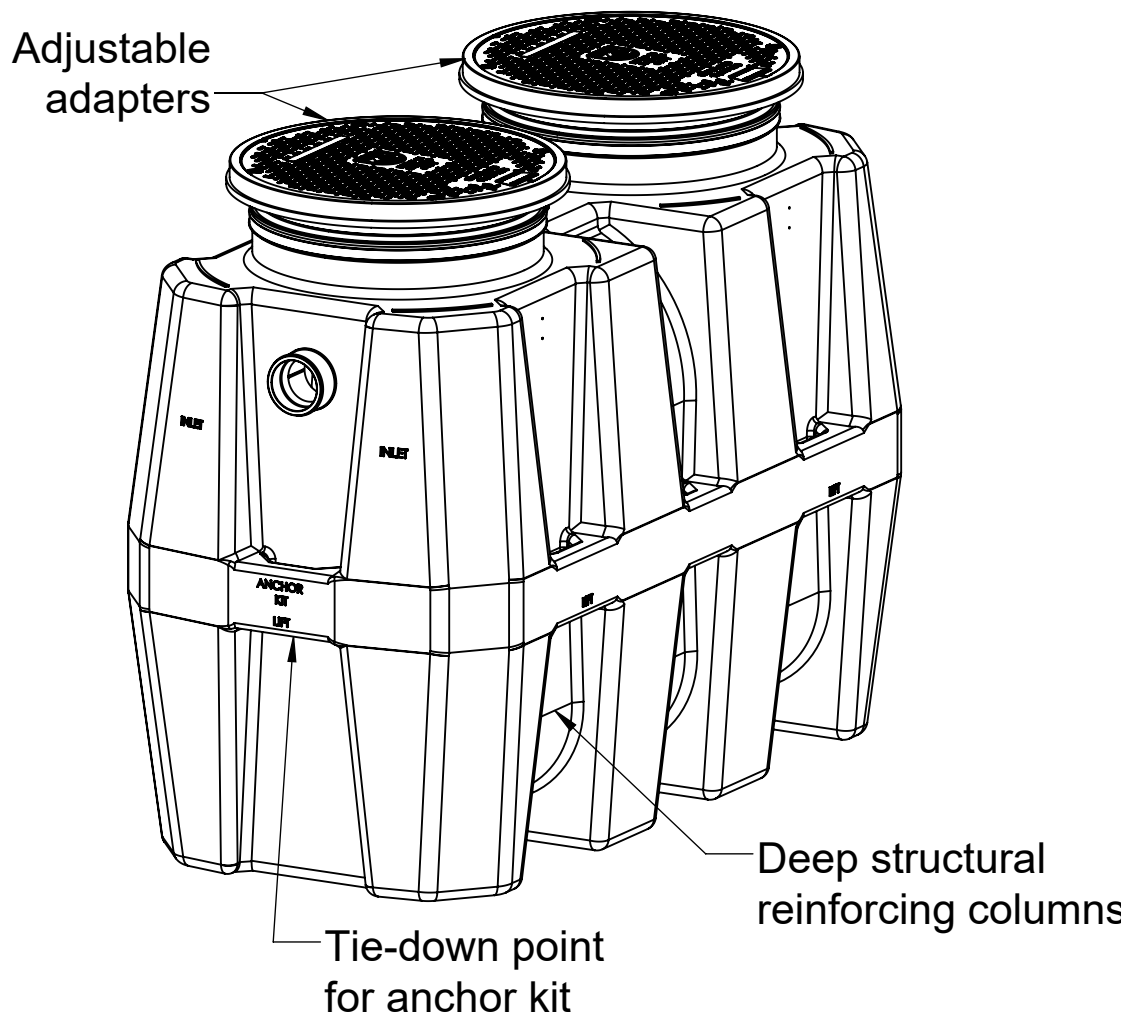
- 1. For gravity drainage applications only. Do not use for pressure applications.
- 2. 3/8" thick seamless medium density polyethylene walls.
- 3. Unit supplied with built-in adapters for up to 5" of adjustability. Additional risers available for deeper burial depth.
- 4. Cover placement allows full access to tank for proper maintenance.
- 5. For on the-floor or buried applications.

ENGINEER SPECIFICATION GUIDE

Striem Bio Basin™ decontamination tank model BB-275 shall be lifetime guaranteed and Made in USA of seamless, rotationally-molded polyethylene with minimum 3/8" uniform wall thickness. Tank shall be furnished with inlets, outlets, vents, cover, riser system, monitoring equipment and other modifications per jobsite-specific conditions and per engineer's specification.

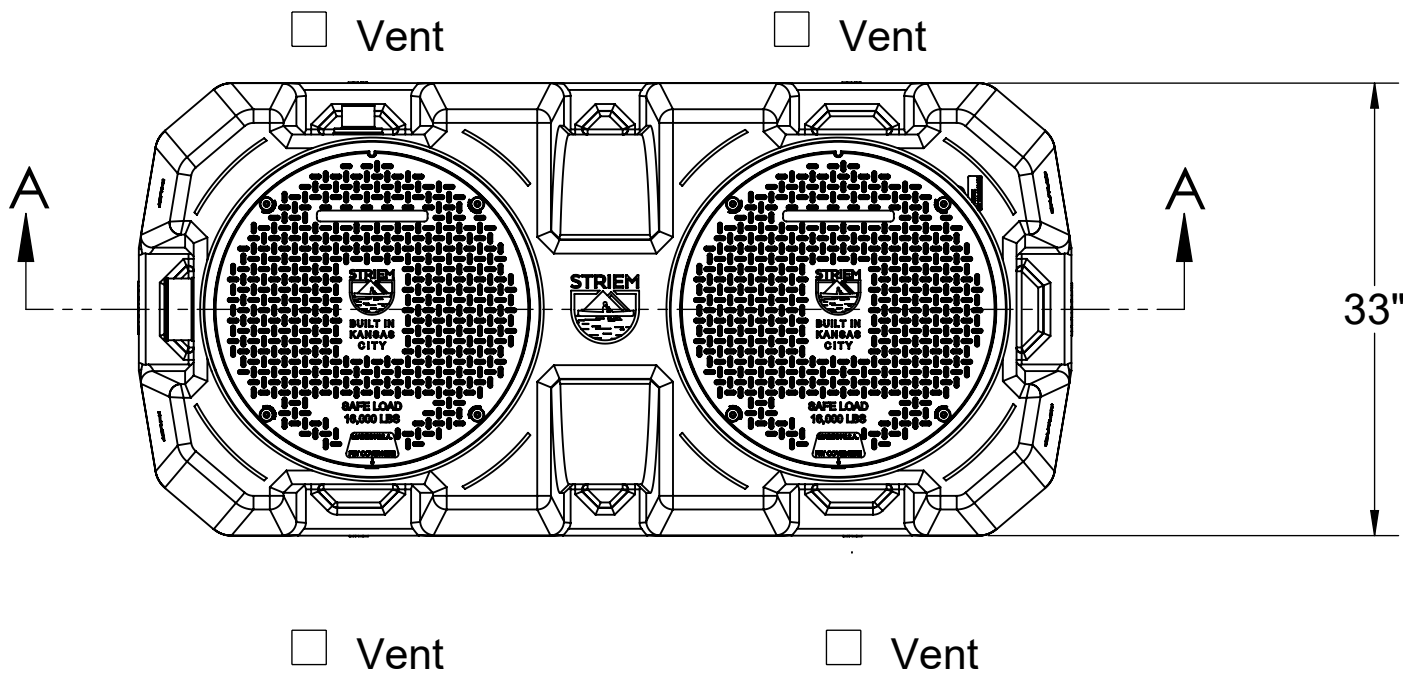
THIRD PARTY STRUCTURAL ANALYSIS

The BB-275 has been structurally analyzed in accordance with the requirements of IBC 2012 and ASCE/SEI 7 for direct burial. The maximum burial depth and backfill material are specified in our installation instructions. The structural design has been reviewed and sealed by a professional engineer registered in the state of California. A sealed structural analysis report is available upon request.

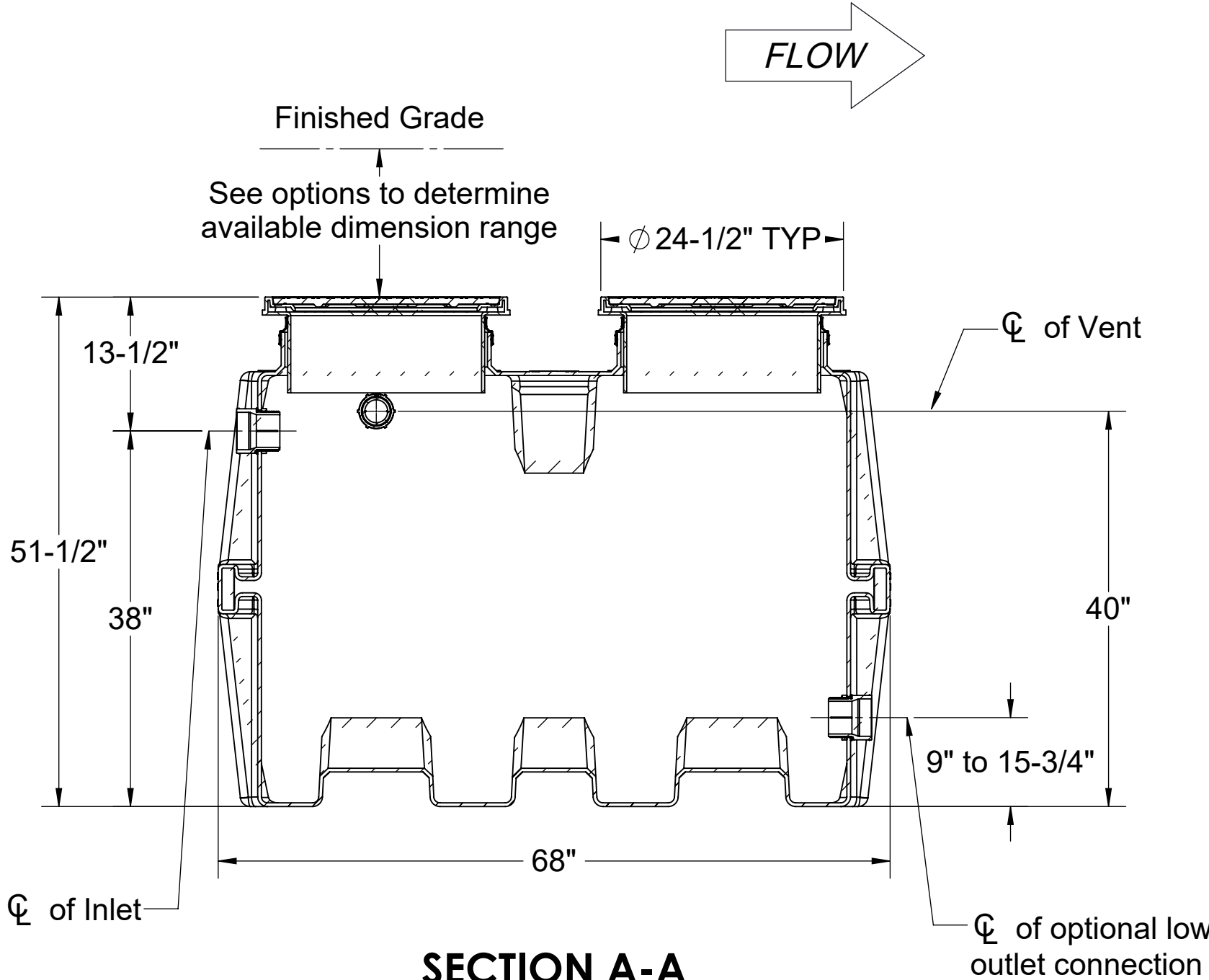


Directions: Complete steps 1-4 and submit signed with purchase order.

1. Choose Connection Locations.



TOP VIEW



SECTION A-A

2. Choose Connection Types.

- | | |
|--|---|
| Inlet | Size |
| <input type="checkbox"/> Plain End | <input type="checkbox"/> 2" |
| <input type="checkbox"/> Female Thread | <input type="checkbox"/> 3" |
| <input type="checkbox"/> Flanged | <input type="checkbox"/> 4" |
| | <input type="checkbox"/> 6" (Female thread unavailable) |
| Optional Outlet | Size |
| <input type="checkbox"/> Plain End | <input type="checkbox"/> 2" |
| <input type="checkbox"/> Female Thread | <input type="checkbox"/> 3" |
| <input type="checkbox"/> Flanged | <input type="checkbox"/> 4" |
| | <input type="checkbox"/> 6" (Female thread unavailable) |
| Vent | Size |
| <input type="checkbox"/> Plain End | <input type="checkbox"/> 2" |
| <input type="checkbox"/> Female Thread | <input type="checkbox"/> 3" |
| <input type="checkbox"/> Flanged | <input type="checkbox"/> 4" |

3. Riser Options.

- Included : 0" - 5"**
- ☐ **SR24** (2) : >5" - 24"
 - ☐ **LR24** (2) : >24" - 39"
 - ☐ **SR24** (4) : >39" - 43"
 - ☐ **SR24** (2) + **LR24** (2) : >43" - 58"
 - ☐ **LR24** (4) : >58" - 72"
 - ☐ **SR24** (2) + **LR24** (4) : >72" - 90"
- OR -**
- ☐ **CPRK** (2) : >11" - 90"
 - Corrugated Pipe Riser Kit.
 - Used in substitute of SR/LR riser options.
 - 18" diameter corrugated pipe by others.
 - See CPRK specification for more detail.

4. Choose Additional Options.

- ☐ **HDK-2** - High Water Anchor Kit
- ☐ **AVA-3** - Single Level Monitoring Package *
- ☐ **AVA-4** - Multi-Level Monitoring Package *
- ☐ Flat tank bottom
- ☐ Low outlet, 9" min to 15-3/4" max (Specify ____)
 - Outlet with manual valve (see drawing on sheet 2)
 - Outlet with electronically actuated valve controlled by monitoring package (See drawing on sheet 3)

*Monitoring packages will raise covers by 2-1/2".

Signature of Approval: _____

Company: _____

Date of Approval: _____

Specifying Engineer: _____

Engineering Firm: _____

PROPRIETARY AND CONFIDENTIAL

THE INFORMATION CONTAINED IN THIS DRAWING IS THE SOLE PROPERTY OF STRIEM, LLC. ANY REPRODUCTION IN PART OR AS A WHOLE WITHOUT THE WRITTEN PERMISSION OF STRIEM, LLC. IS PROHIBITED.

PO IS NON-CANCELABLE
ORDER IS NON-RETURNABLE

MODEL NUMBER: BB-275

DESCRIPTION:

POLYETHYLENE DECONTAMINATION
TANK 250 GALLON CAPACITY

DWG BY: MJ DATE: 12/21/2020 REV: 0 ECO:

SPECIFICATION SHEET

Striem
3100 Brinkerhoff
Kansas City, KS 66115
Tel: 913-222-1500
orders@striemco.com
www.striemco.com

Made in the U.S.A

SHEET 1



SPECIFICATIONS

- 1. Liquid holding capacity: 250 Gallons
- 2. Unit weight w/std. cover: 230 Pounds
- 3. Highway rated composite cover: 16,000 lb. load rating.
- 4. Maximum operating temperature 140°F continuous.

NOTES

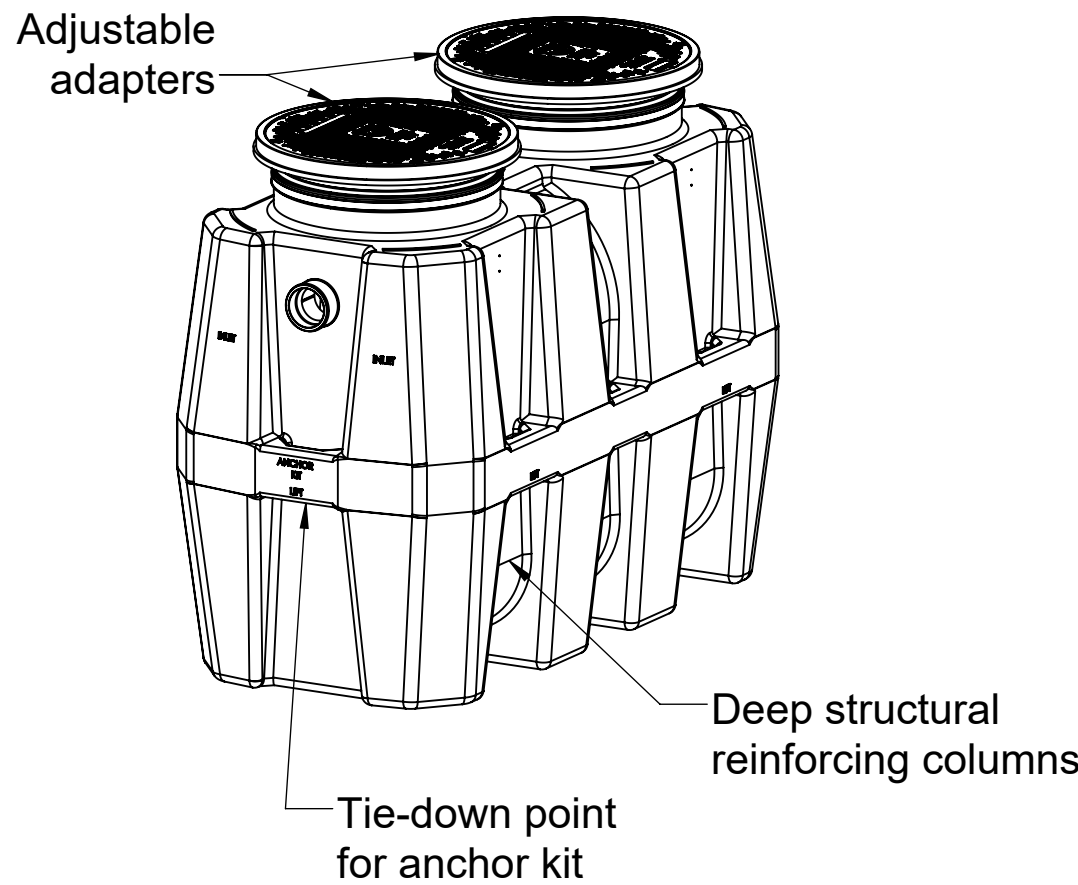
- 1. For gravity drainage applications only. Do not use for pressure applications.
- 2. 3/8" thick seamless medium density polyethylene walls.
- 3. Unit supplied with built-in adapters for up to 5" of adjustability. Additional risers available for deeper burial depth.
- 4. Cover placement allows full access to tank for proper maintenance.
- 5. For on the-floor or buried applications.

ENGINEER SPECIFICATION GUIDE

Striem Bio Basin™ decontamination tank model BB-275 shall be lifetime guaranteed and Made in USA of seamless, rotationally-molded polyethylene with minimum 3/8" uniform wall thickness. Tank shall be furnished with inlets, outlets, vents, cover, riser system, monitoring equipment and other modifications per jobsite-specific conditions and per engineer's specification.

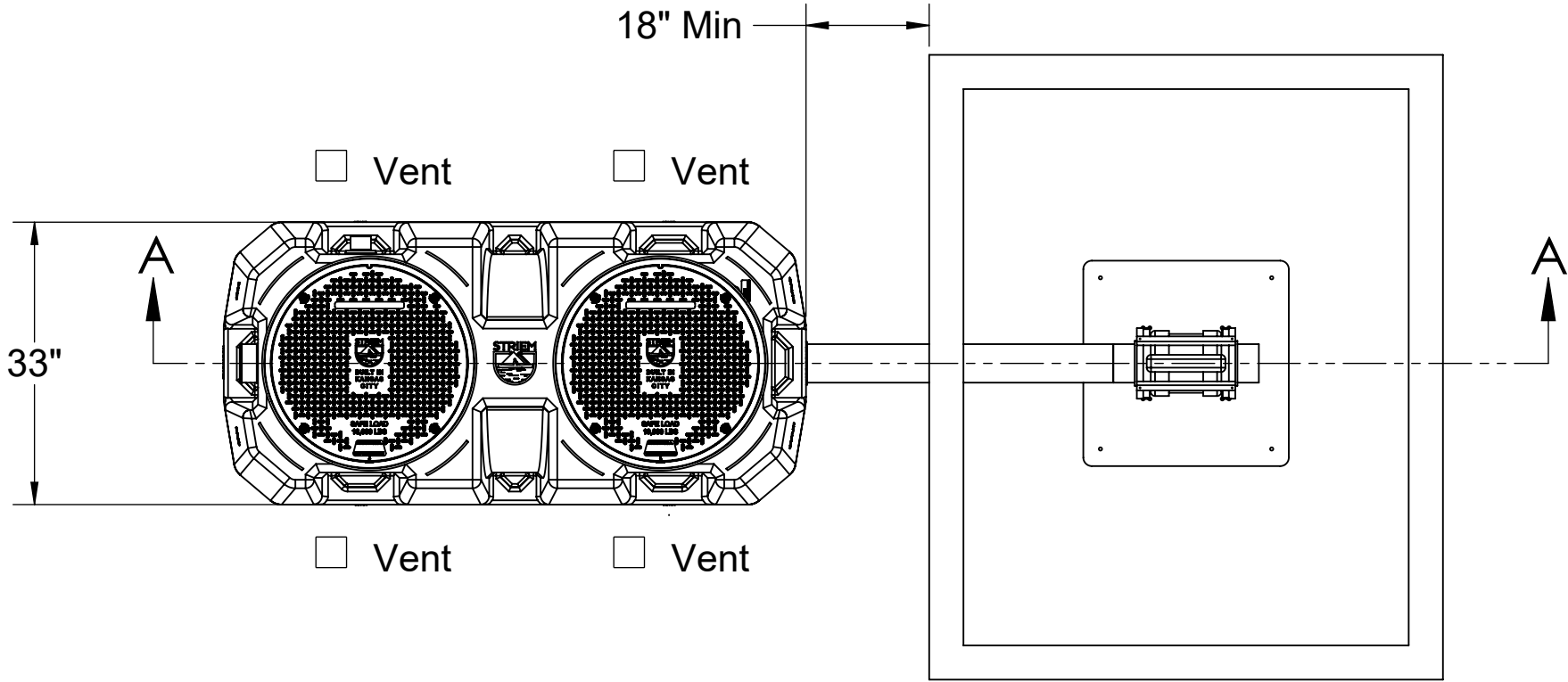
THIRD PARTY STRUCTURAL ANALYSIS

The BB-275 has been structurally analyzed in accordance with the requirements of IBC 2012 and ASCE/SEI 7 for direct burial. The maximum burial depth and backfill material are specified in our installation instructions. The structural design has been reviewed and sealed by a professional engineer registered in the state of California. A sealed structural analysis report is available upon request.

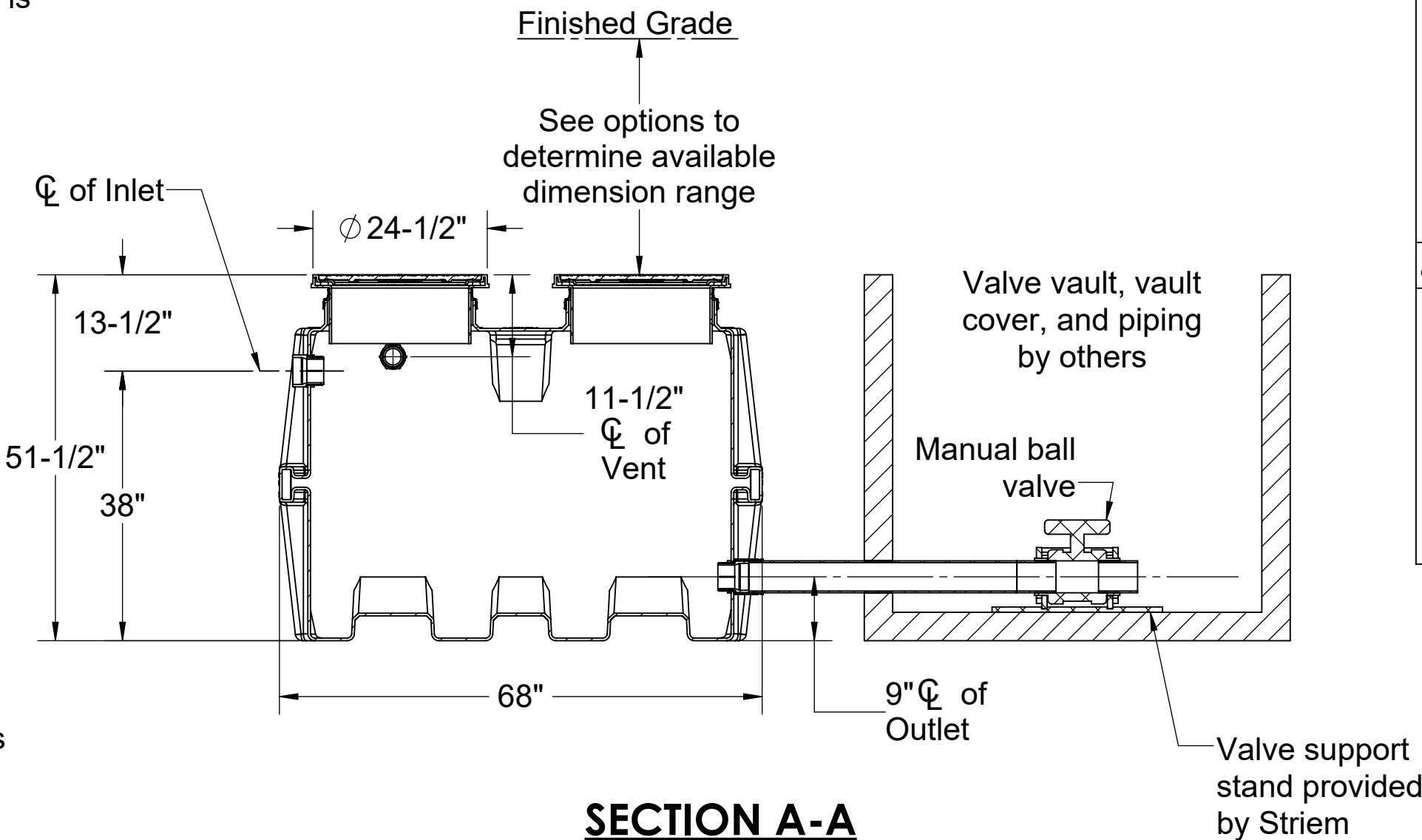


Directions: Complete steps 1-4 and submit signed with purchase order.

1. Choose Connection Locations.



TOP VIEW



SECTION A-A

2. Choose Connection Types.

- Inlet**
 - Plain End
 - Female Thread
 - Flanged**Size**
 - 2"
 - 3"
 - 4"
 - 6" (Female thread unavailable)
- Outlet**
 - Plain End
 - Female Thread
 - Flanged**Size**
 - 2"
 - 3"
 - 4"
 - 6" (Female thread unavailable)
- Vent**
 - Plain End
 - Female Thread
 - Flanged**Size**
 - 2"
 - 3"
 - 4"

3. Riser Options.

- Included : 0" - 5"**
 - SR24 (2) : >5" - 24"
 - LR24 (2) : >24" - 39"
 - SR24 (4) : >39" - 43"
 - SR24 (2) + LR24 (2) : >43" - 58"
 - LR24 (4) : >58" - 72"
 - SR24 (2) + LR24 (4) : >72" - 90"
- OR -**
 - CPRK (2) : >11" - 90"
 - Corrugated Pipe Riser Kit.
 - Used in substitute of SR/LR riser options.
 - 18" diameter corrugated pipe by others.
 - See CPRK specification for more detail.

4. Choose Additional Options.

- HDK-2 - High Water Anchor Kit
- AVA-3 - Single Level Monitoring Package *
- AVA-4 - Multi-Level Monitoring Package *
- Flat tank bottom

*Monitoring packages will raise covers by 2-1/2".

Signature of Approval: _____

Company: _____

Date of Approval: _____

Specifying Engineer: _____

Engineering Firm: _____

PROPRIETARY AND CONFIDENTIAL

THE INFORMATION CONTAINED IN THIS DRAWING IS THE SOLE PROPERTY OF STRIEM, LLC. ANY REPRODUCTION IN PART OR AS A WHOLE WITHOUT THE WRITTEN PERMISSION OF STRIEM, LLC. IS PROHIBITED.

PO IS NON-CANCELABLE
ORDER IS NON-RETURNABLE

MODEL NUMBER: BB-275

DESCRIPTION:

POLYETHYLENE DECONTAMINATION
TANK WITH MANUAL BALL VALVE
250 GALLON CAPACITY

DWG BY: MJ DATE: 12/21/2020 REV: 0 ECO:

SHEET 2
SPECIFICATION SHEET

Striem
3100 Brinkerhoff
Kansas City, KS 66115
Tel: 913-222-1500
orders@striemco.com
www.striemco.com

Made in the U.S.A



SPECIFICATIONS

- 1. Liquid holding capacity: 250 Gallons
- 2. Unit weight w/std. cover: 230 Pounds
- 3. Highway rated composite cover: 16,000 lb. load rating.
- 4. Maximum operating temperature 140°F continuous.

NOTES

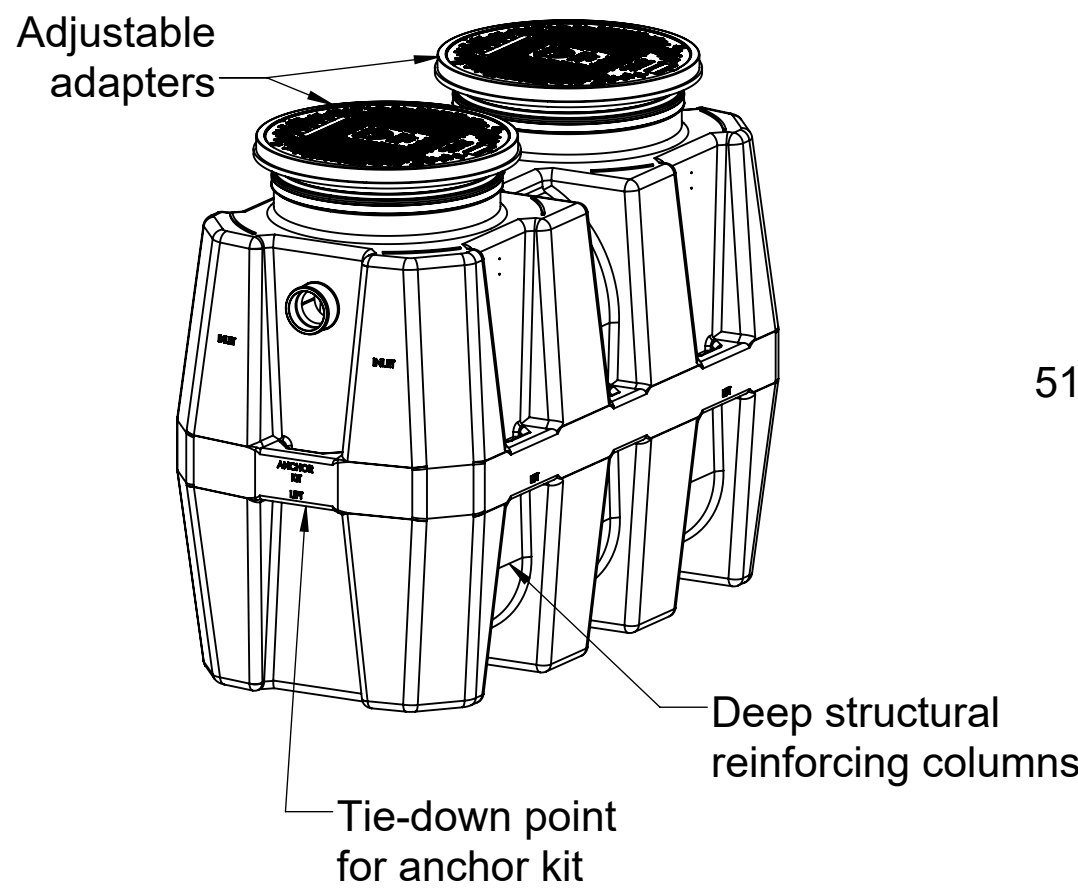
- 1. For gravity drainage applications only. Do not use for pressure applications.
- 2. 3/8" thick seamless medium density polyethylene walls.
- 3. Unit supplied with built-in adapters for up to 5" of adjustability. Additional risers available for deeper burial depth.
- 4. Cover placement allows full access to tank for proper maintenance.
- 5. For on the-floor or buried applications.

ENGINEER SPECIFICATION GUIDE

Striem Bio Basin™ decontamination tank model BB-275 shall be lifetime guaranteed and Made in USA of seamless, rotationally-molded polyethylene with minimum 3/8" uniform wall thickness. Tank shall be furnished with inlets, outlets, vents, cover, riser system, monitoring equipment and other modifications per jobsite-specific conditions and per engineer's specification.

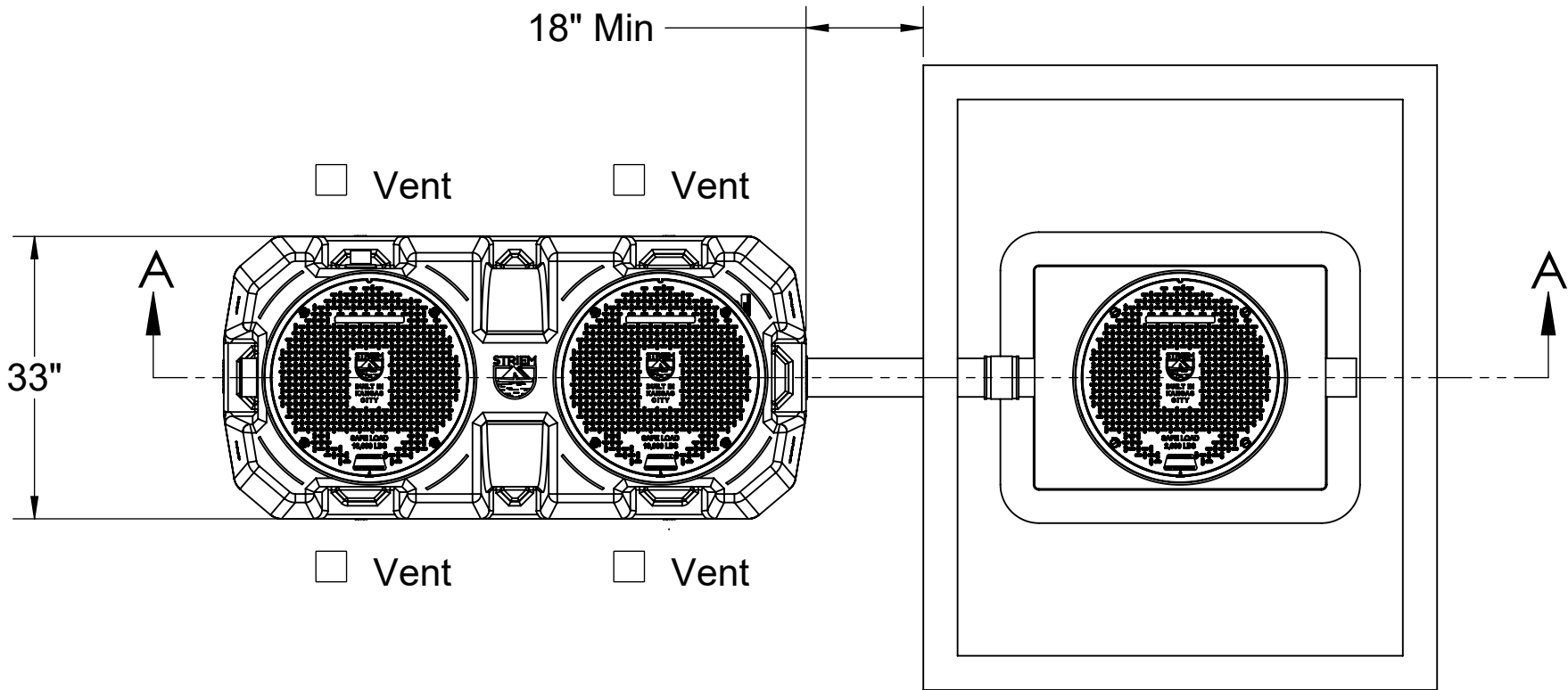
THIRD PARTY STRUCTURAL ANALYSIS

The BB-275 has been structurally analyzed in accordance with the requirements of IBC 2012 and ASCE/SEI 7 for direct burial. The maximum burial depth and backfill material are specified in our installation instructions. The structural design has been reviewed and sealed by a professional engineer registered in the state of California. A sealed structural analysis report is available upon request.

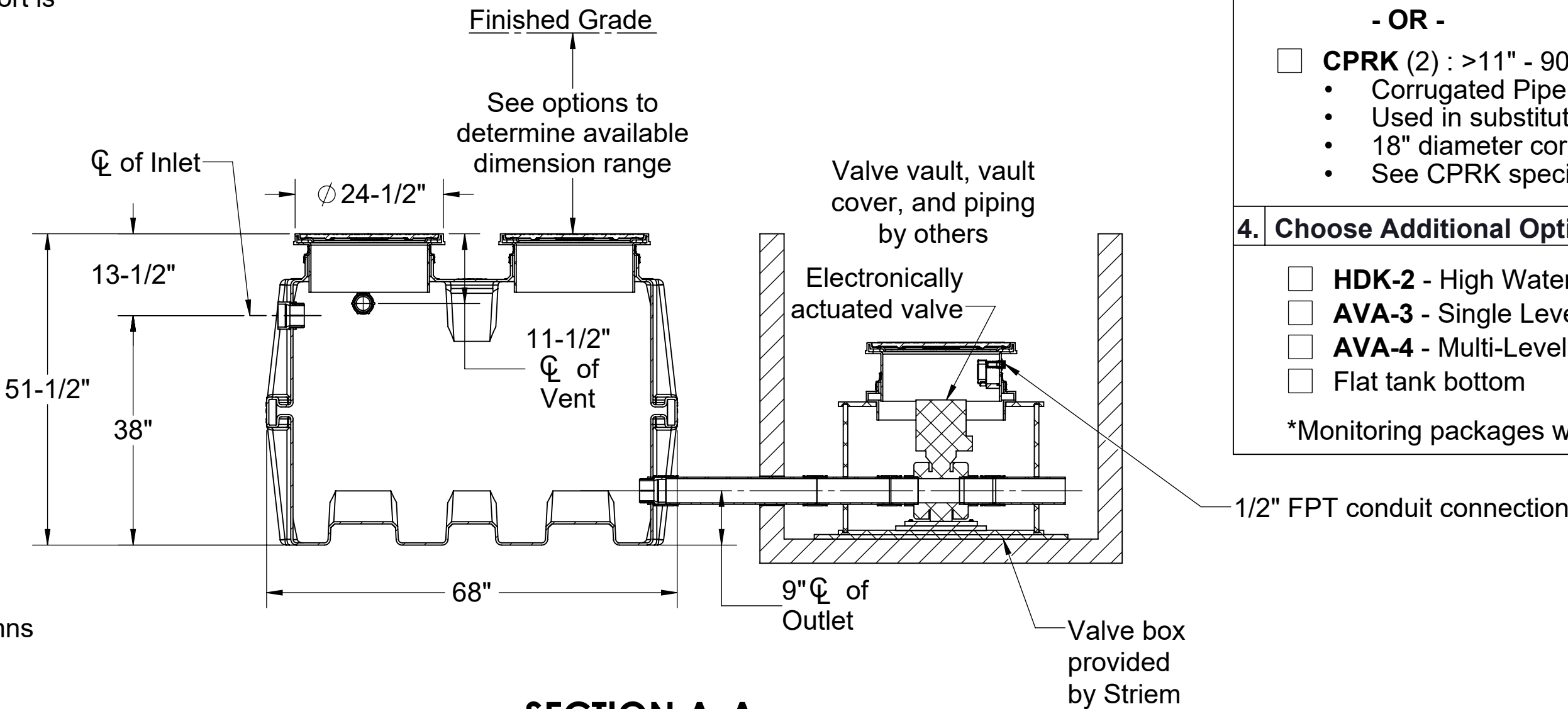


Directions: Complete steps 1-4 and submit signed with purchase order.

1. Choose Connection Locations.



TOP VIEW



SECTION A-A

2. Choose Connection Types.

Inlet	Size
<input type="checkbox"/> Plain End	<input type="checkbox"/> 2"
<input type="checkbox"/> Female Thread	<input type="checkbox"/> 3"
<input type="checkbox"/> Flanged	<input type="checkbox"/> 4"
	<input type="checkbox"/> 6" (Female thread unavailable)
Outlet	Size
<input type="checkbox"/> Plain End	<input type="checkbox"/> 2"
<input type="checkbox"/> Female Thread	<input type="checkbox"/> 3"
<input type="checkbox"/> Flanged	<input type="checkbox"/> 4"
	<input type="checkbox"/> 6" (Female thread unavailable)
Vent	Size
<input type="checkbox"/> Plain End	<input type="checkbox"/> 2"
<input type="checkbox"/> Female Thread	<input type="checkbox"/> 3"
<input type="checkbox"/> Flanged	<input type="checkbox"/> 4"

3. Riser Options.

- Included : 0" - 5"**
- ☐ **SR24** (2) : >5" - 24"
 - ☐ **LR24** (2) : >24" - 39"
 - ☐ **SR24** (4) : >39" - 43"
 - ☐ **SR24** (2) + **LR24** (2) : >43" - 58"
 - ☐ **LR24** (4) : >58" - 72"
 - ☐ **SR24** (2) + **LR24** (4) : >72" - 90"
- OR -**
- ☐ **CPRK** (2) : >11" - 90"
 - Corrugated Pipe Riser Kit.
 - Used in substitute of SR/LR riser options.
 - 18" diameter corrugated pipe by others.
 - See CPRK specification for more detail.

4. Choose Additional Options.

- ☐ **HDK-2** - High Water Anchor Kit
- ☐ **AVA-3** - Single Level Monitoring Package *
- ☐ **AVA-4** - Multi-Level Monitoring Package *
- ☐ Flat tank bottom

*Monitoring packages will raise covers by 2-1/2".

Signature of Approval: _____

Company: _____

Date of Approval: _____

Specifying Engineer: _____

Engineering Firm: _____

PROPRIETARY AND CONFIDENTIAL

THE INFORMATION CONTAINED IN THIS DRAWING IS THE SOLE PROPERTY OF STRIEM, LLC. ANY REPRODUCTION IN PART OR AS A WHOLE WITHOUT THE WRITTEN PERMISSION OF STRIEM, LLC. IS PROHIBITED.

PO IS NON-CANCELABLE
ORDER IS NON-RETURNABLE

MODEL NUMBER: BB-275

DESCRIPTION:
POLYETHYLENE DECONTAMINATION
TANK WITH ELECTRONICALLY
ACTUATED BALL VALVE
250 GALLON CAPACITY

DWG BY: MJ DATE: 12/21/2020 REV: 0 ECO:

SPECIFICATION SHEET

Striem
3100 Brinkerhoff
Kansas City, KS 66115
Tel: 913-222-1500
orders@striemco.com
www.striemco.com

Made in the U.S.A

SHEET 3

