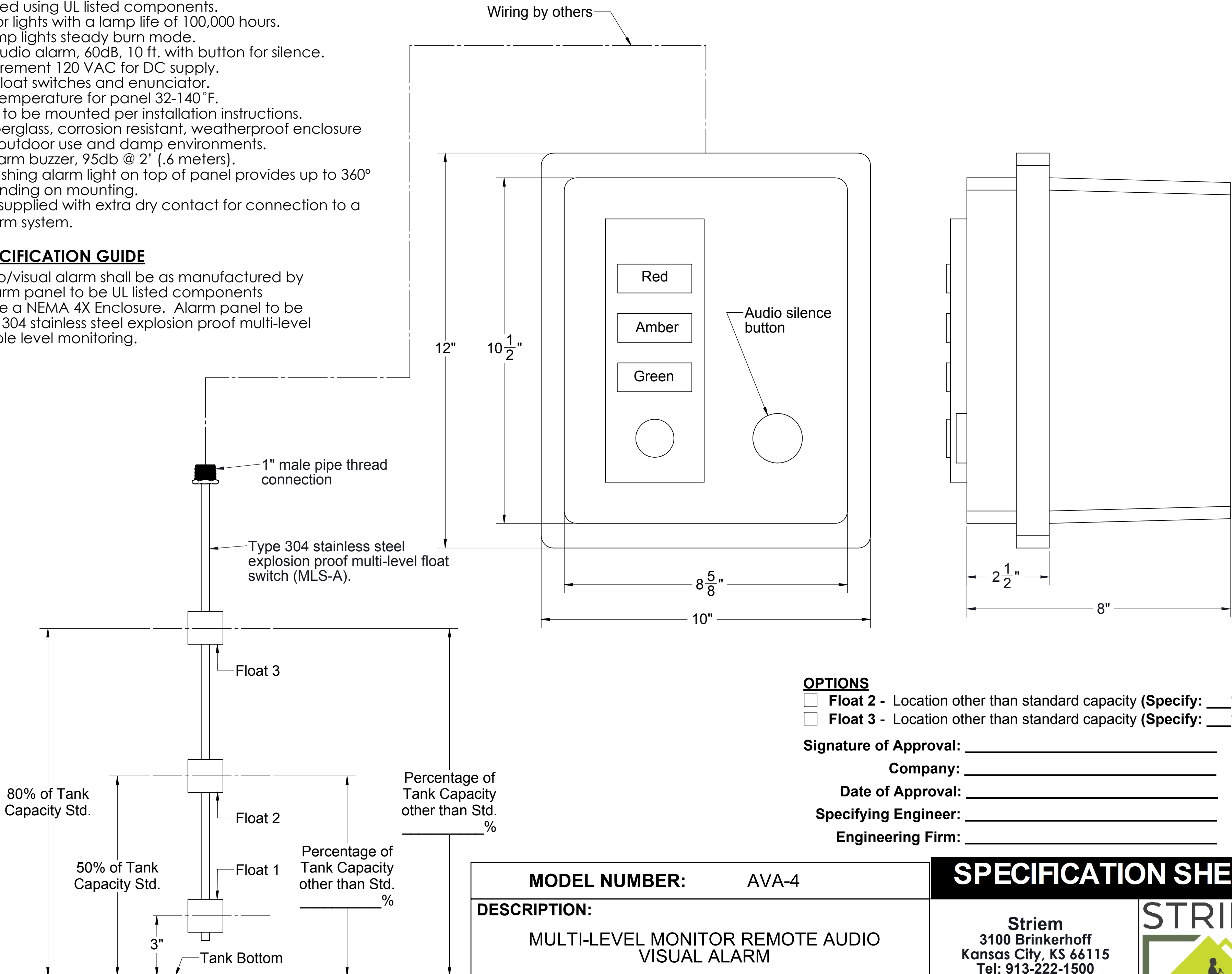


SPECIFICATIONS

1. Manufactured using UL listed components.
2. LED indicator lights with a lamp life of 100,000 hours.
3. <PARA >Lamp lights steady burn mode.
4. High level Audio alarm, 60dB, 10 ft. with button for silence.
5. Power requirement 120 VAC for DC supply.
6. 24 VDC for float switches and enunciator.
7. Operating temperature for panel 32-140 °F.
8. Float switch to be mounted per installation instructions.
9. NEMA 4X fiberglass, corrosion resistant, weatherproof enclosure suitable for outdoor use and damp environments.
10. NEMA 4X alarm buzzer, 95db @ 2' (.6 meters).
11. NEMA 4X flashing alarm light on top of panel provides up to 360° signal depending on mounting.
12. Unit comes supplied with extra dry contact for connection to a building alarm system.

ENGINEER SPECIFICATION GUIDE

Multi-level audio/visual alarm shall be as manufactured by Striem, LLC. Alarm panel to be UL listed components contained inside a NEMA 4X Enclosure. Alarm panel to be wired to a type 304 stainless steel explosion proof multi-level float switch for multiple level monitoring.



OPTIONS

- Float 2** - Location other than standard capacity (**Specify: ____%**)
- Float 3** - Location other than standard capacity (**Specify: ____%**)

Signature of Approval: _____

Company: _____

Date of Approval: _____

Specifying Engineer: _____

Engineering Firm: _____

MODEL NUMBER: AVA-4	
DESCRIPTION: MULTI-LEVEL MONITOR REMOTE AUDIO VISUAL ALARM	
DWG BY: RS	DATE: 10/4/19
REV:	ECO:

SPECIFICATION SHEET

Striem
3100 Brinkerhoff
Kansas City, KS 66115
Tel: 913-222-1500
Fax: 913-291-0457
www.striemco.com



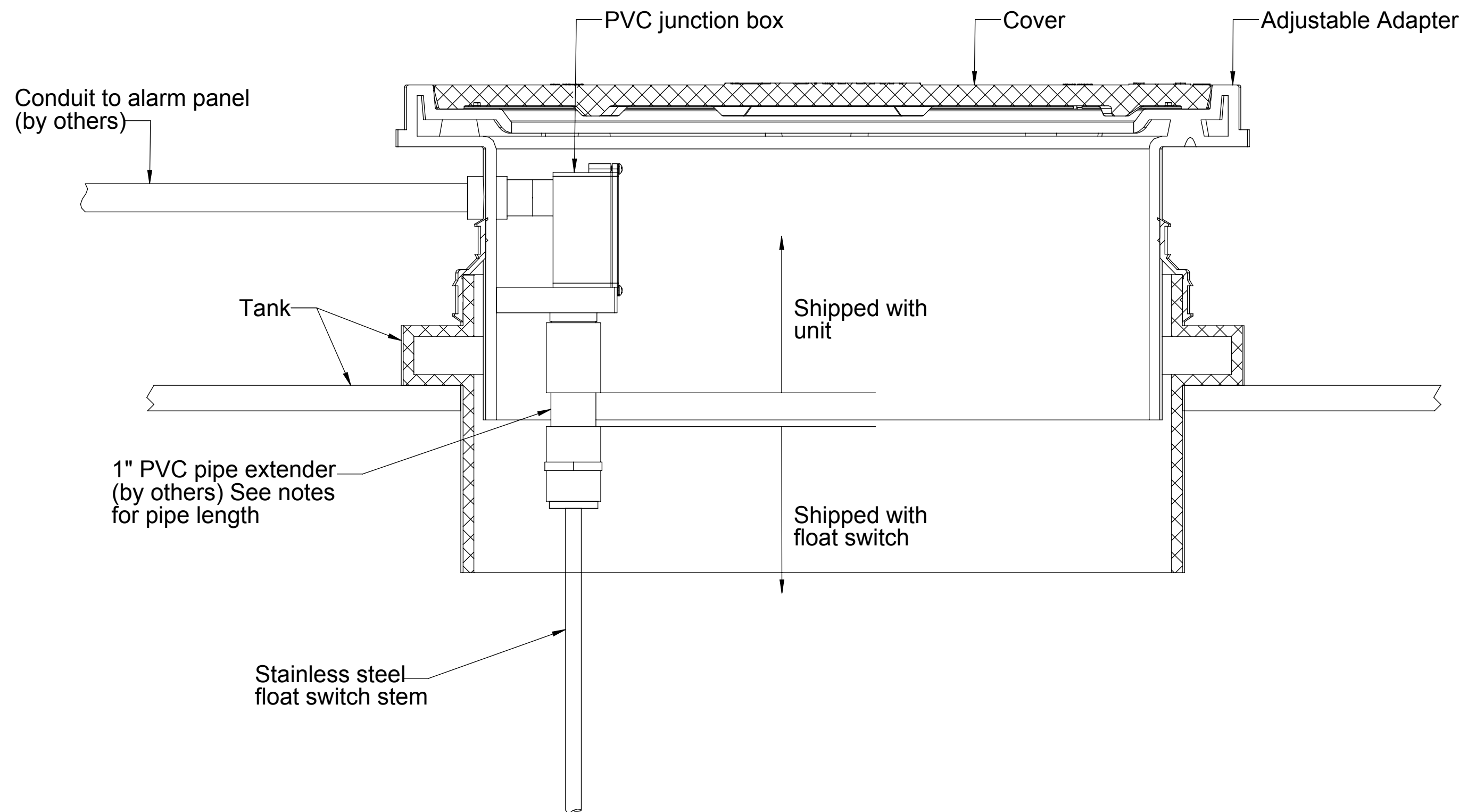
Made in the U.S.A

PROPRIETARY AND CONFIDENTIAL

THE INFORMATION CONTAINED IN THIS DRAWING IS THE SOLE PROPERTY OF STRIEM, LLC. ANY REPRODUCTION IN PART OR AS A WHOLE WITHOUT THE WRITTEN PERMISSION OF STRIEM, LLC. IS PROHIBITED.

Installation Guidelines:

1. Float switch and alarm panel will ship separate from tank.
2. If tank is to be installed above grade or without any adjustment to the adapter install a 3" long stub of 1" sch. 40 pvc pipe (by others) between the bottom of the junction box and the top of the float switch..
3. If tank adapter is adjusted, add the amount the riser is adjusted to the 3" for the correct placement of the float switch. (3" + Adjusted height = Total length of 1" PVC extender pipe).
4. Run float switch wiring through 1" pvc pipe and into the bottom of the junction box inside the adapter to finish the installation of the multi-level float switch.



DESCRIPTION:
**AVA-4 MULTI-LEVEL STAINLESS STEEL
 FLOAT SWITCH INSTALLATION
 GUIDELINES**

Striem
 3100 Brinkerhoff
 Kansas City, KS 66115
 Tel: 913-222-1500
 Fax: 913-291-0457
 www.striemco.com



Made in the U.S.A

PROPRIETARY AND CONFIDENTIAL

THE INFORMATION CONTAINED IN THIS DRAWING IS THE SOLE PROPERTY OF STRIEM, LLC. ANY REPRODUCTION IN PART OR AS A WHOLE WITHOUT THE WRITTEN PERMISSION OF STRIEM, LLC. IS PROHIBITED.

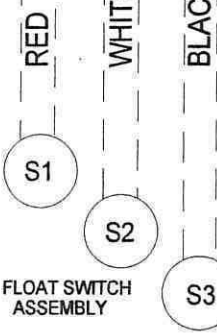
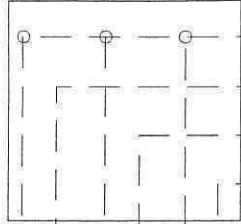
DWG BY: RS DATE: 8/5/19 REV: ECO:



DRAWING: AUDIO - VISUAL ALARM BOX

S1: HIGH-HIGH ALARM
 S2: HIGH ALARM
 S3: NORMAL

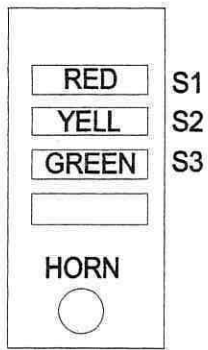
JUNCTION BOX



FLOAT SWITCH ASSEMBLY

HIGH LEVEL ALARM
 (CLOSES UPON ACK.)

TO BUILDING ALARM
 DRY CONTACT



120 VAC POWER

AUDIO VISUAL ALARM BOX
 ----- FIELD WIRING

