

SETTLER SERIES CATCH BASINS

(Models CB-50-S, CB-50-G, CB-125-S, CB-125-G, CB-275-S)

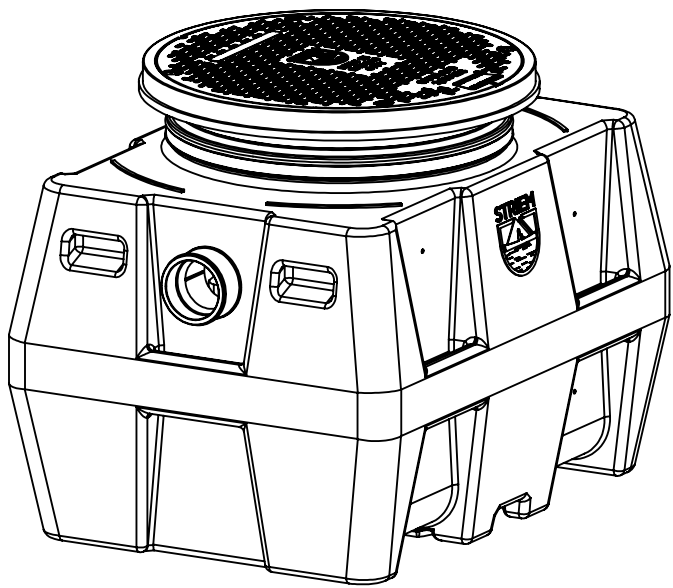
!

WARNING

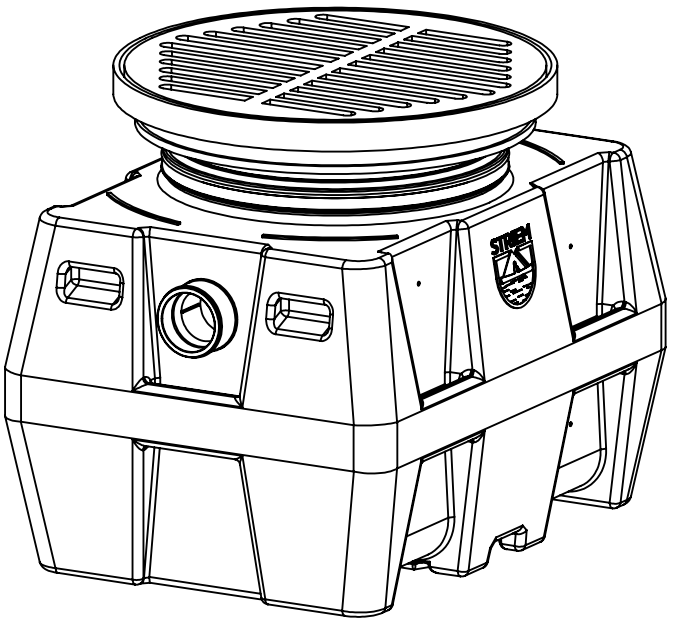
DO NOT AIR PRESSURE TEST UNIT!

DOING SO MAY RESULT IN PROPERTY DAMAGE, SERIOUS BODILY INJURY, OR DEATH!
REFER TO INSTALLATION INSTRUCTIONS FOR CORRECT TESTING PROCEDURE.

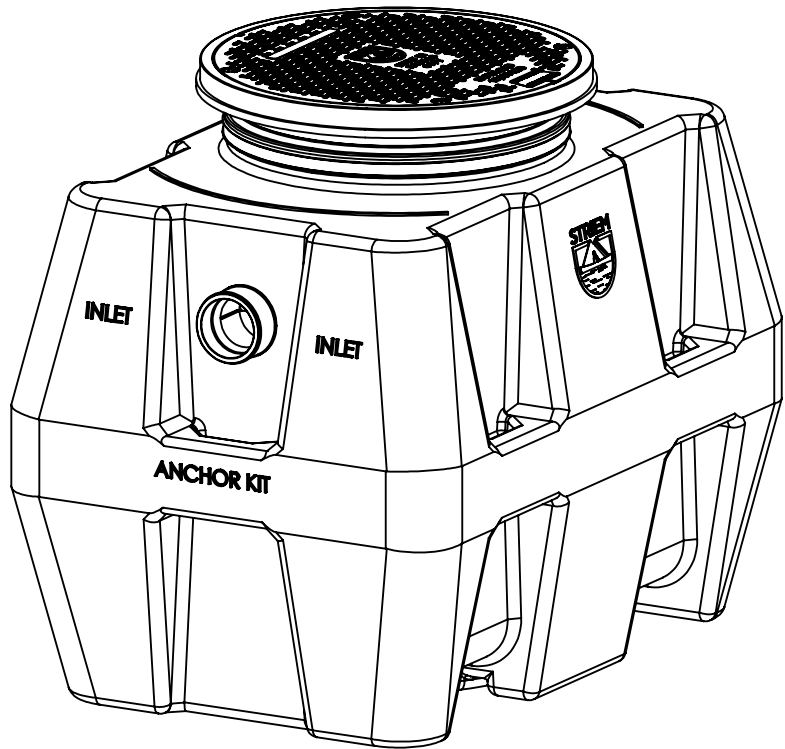
AIR



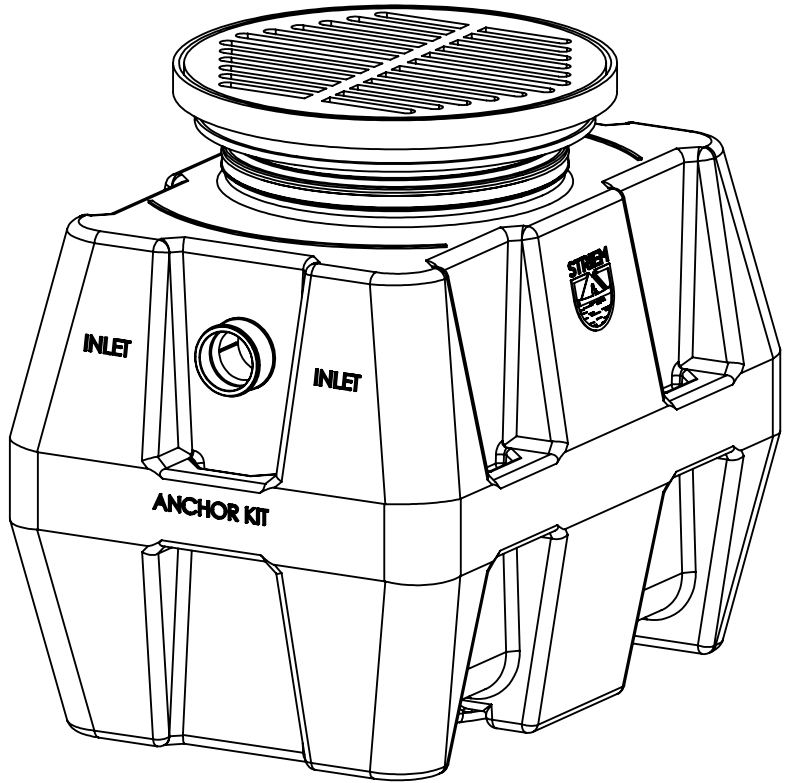
CB-50-S
57 gallons



CB-50-G
57 gallons
Optional Basket Capacity: 7 Gallons



CB-125-S
110 gallons



CB-125-G
110 gallons
Optional Basket Capacity: 7 Gallons



CB-275-S
250 gallons

Sheet Descriptions

- Sheet #1 - Series overview and Warranty information
- Sheet #2 - General installation guidelines and Operation/Maintenance guidelines
- Sheet #3 - Below Grade installation guidelines
- Sheet #4 - TeleGlide Riser installation guidelines

Leak/Seal Testing

DO NOT AIR TEST UNIT OR TELEGLIDE RISER SYSTEM! Doing so may result in property damage, personal injury or death.

Base Unit: To perform a leak/seal test on the base unit, cap/plug all plumbing connections, remove the cover, and fill the unit with water just above the highest connection. Inspect unit and connections for leaks. Check water level at specific time intervals per local code.

TeleGlide Riser System: If required by local code, the riser system may be leak/seal tested similar to the base unit. CAUTION: the riser(s) must be supported before filling with water to keep from tipping over. Once riser system is in place and properly supported, cap/plug all plumbing connections on the main unit, remove the cover from the top of the riser assembly and fill the unit and riser system with water to finished grade level. Carefully, as the riser(s) will be very heavy from the weight of the water, inspect all gasket(s) and clamps (if applicable) for any leaks. Check water level at specific time intervals per local code.

Lifetime Warranty

Effective March 2, 2015 Striem represents and warrants that HDPE products will be free from any and all defects in material and workmanship, including corrosion, during the lifetime of the plumbing system in which the Products were originally installed and will, at its option, agree to repair, replace, or supply credit to the original purchaser.

This warranty does not cover damage caused by the Products' normal usage, or wear and tear, nor does it cover damage from naturally occurring phenomenon, including, but not limited to UV, freeze-related damage, or natural disasters. This warranty does not cover the purchaser's cost of routine maintenance including replacement of parts required in routine maintenance.

- This warranty does not cover fabricated steel products, or any monitoring equipment. This warranty shall be effective if, and only if, the Products:
- * Were installed in accordance with Striem's notes, specifications and instructions, for installation, operation, and maintenance;
 - * Were installed in conformance with all applicable building and plumbing codes, and passed all applicable testing methods immediately following installation;
 - * Have not been subjected to misuse or abuse, whether negligent or intentional;
 - * Were never modified, repaired, or altered by any individual(s) not authorized by Striem.

This warranty is the purchaser's sole and exclusive remedy, and acceptance of this exclusive remedy is a condition of the contract for the purchase of these Products. In no event shall Striem be liable for any incidental, special, consequential or punitive damages, or for any costs, attorney fees, expenses, losses or delays claimed to be as a consequence of any damage to, failure of, or defect in any products including, but not limited to, any claims for loss of profits, transportation, removal and installation charges. This warranty is exclusive and in lieu of all other warranties or conditions, written or oral, expressed or implied.

NOTES:

Striem Catch Basin tanks are not to be installed in any other manner except as shown. Consult local codes for separate trapping requirements, cleanout locations and additional installation instructions.

PROPRIETARY AND CONFIDENTIAL

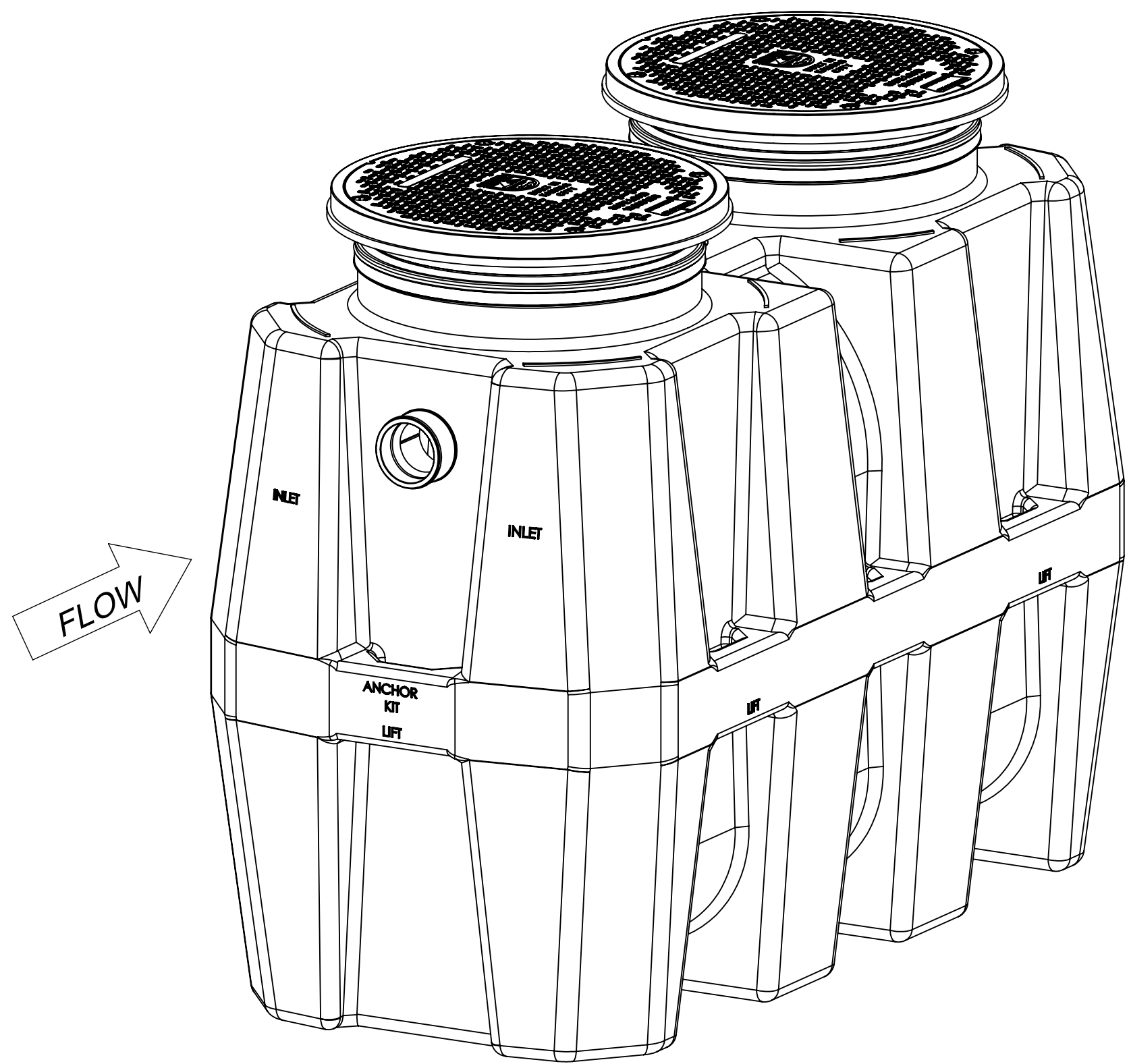
THE INFORMATION CONTAINED IN THIS DRAWING IS THE SOLE PROPERTY OF STRIEM, LLC. ANY REPRODUCTION IN PART OR AS A WHOLE WITHOUT THE WRITTEN PERMISSION OF STRIEM, LLC, IS PROHIBITED.

DESCRIPTION:			
SETTLER SERIES INSTALLATION, OPERATION AND MAINTENANCE GUIDE			
SHEET NUMBER: 1 of 4			
DWG BY: MJ	DATE: 09/24/2019	REV:	ECO:

Striem
3100 Brinkerhoff
Kansas City, KS 66115
Tel: 913-222-1500
Fax: 913-291-0457
www.striemco.com

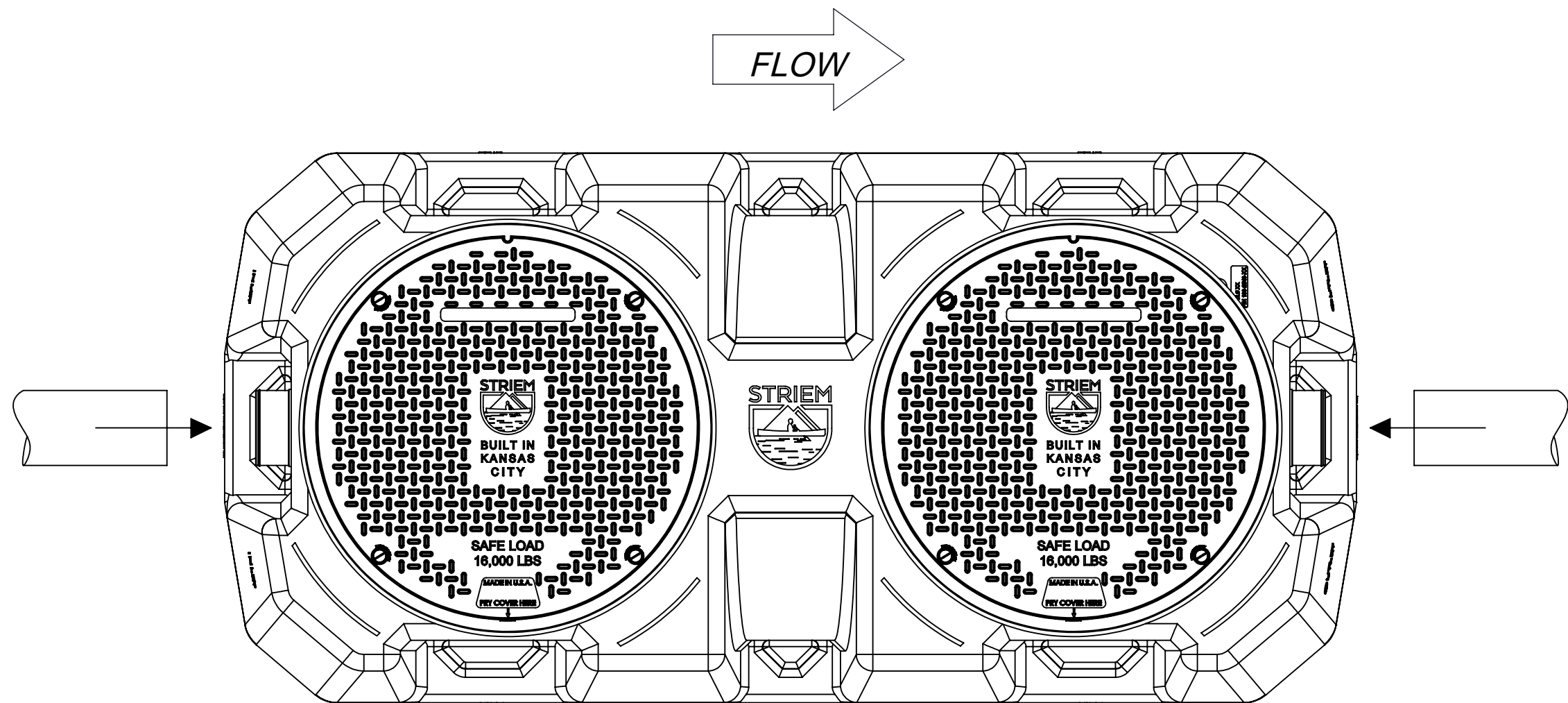
Made in the U.S.A

GENERAL INSTALLATION INSTRUCTIONS
(CB-275-S, CB-125-G SHOWN)



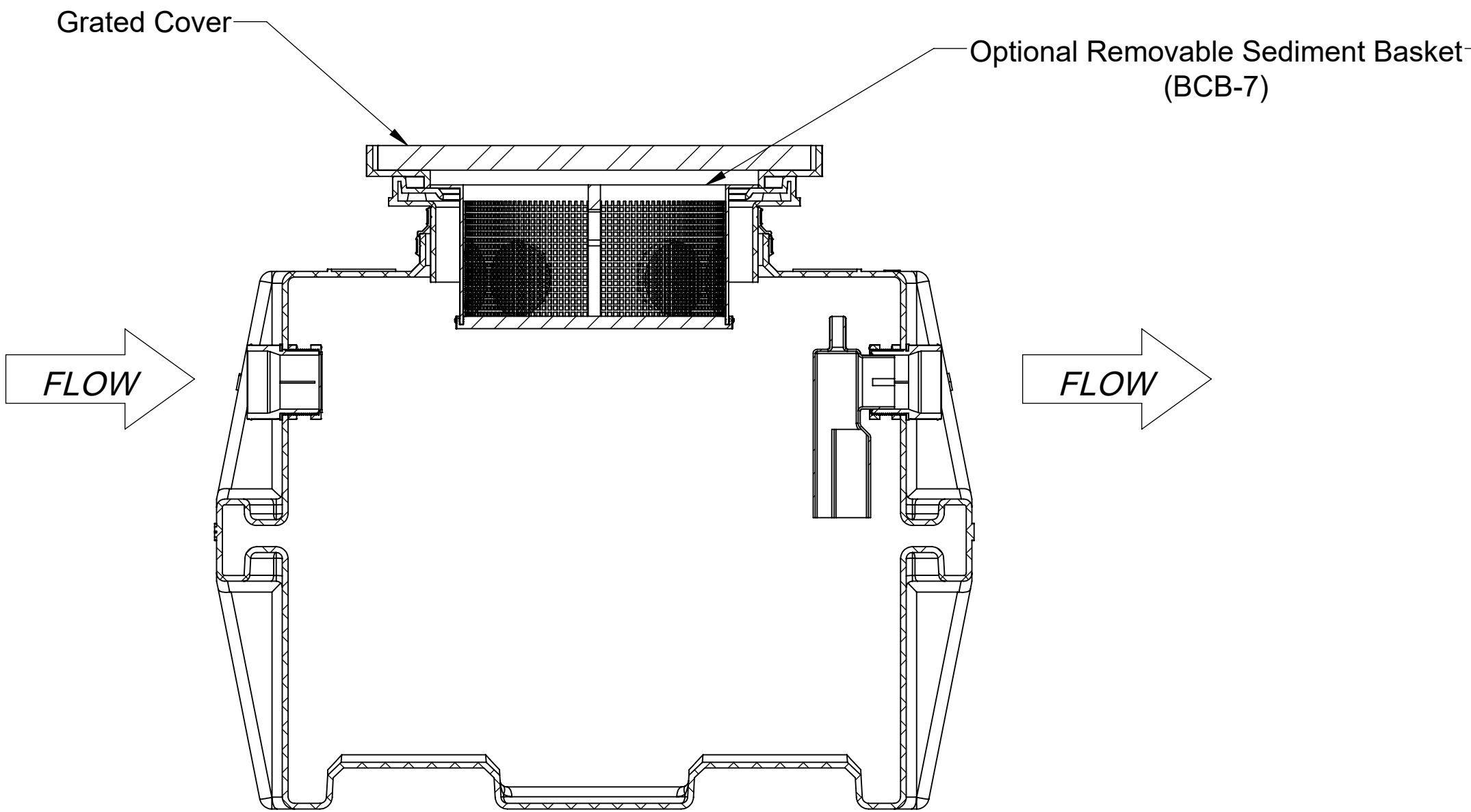
Isometric View

Set unit on level solid surface as close as possible to fixtures being served. If unit is to be installed below grade refer to below grade installation instructions. (sheet #3)

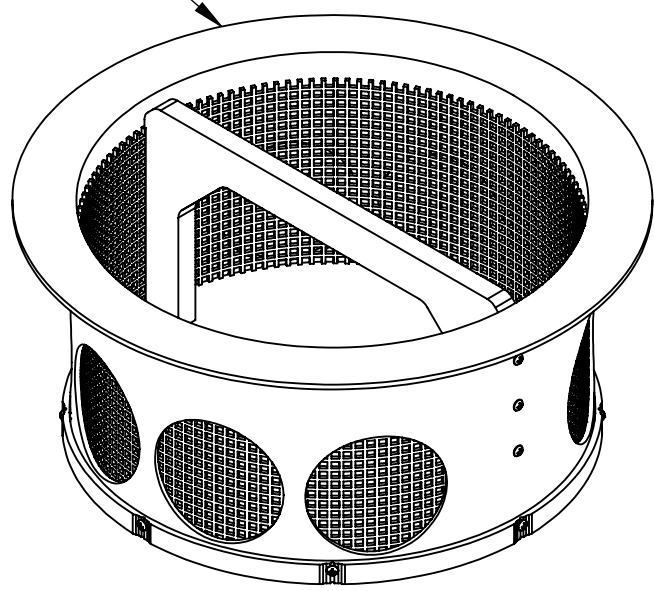


Top View

Connect inlet and outlet drainage lines to unit.
Mechanically couple pipes to unit.
Do not solvent weld.



CB-125-G



BCB-7

OPERATION

Striem Settler Series solids interceptors are designed to settle heavy sand and sediment that may enter the waste system. Wastewater passes through the inlet grate, or optional inlet connection, then enters the settling chamber where heavy debris settles before the wastewater exits through the outlet.

MAINTENANCE

1. Remove cover(s).
2. If unit has optional sediment basket, empty contents into receptacle.
3. Clean main body of the interceptor. Make sure to remove all accumulated water, debris, and sediment.
4. Clean sidewalls of any accumulated debris. Do not allow any material to enter into the plumbing system.
5. Replace optional sediment basket.
6. Replace cover(s). Inspect gasket on underside for wear and tear.
7. Run fixture(s) with water to fill interceptor.
8. Properly dispose of collected material.

PUMPING FREQUENCY:

Based upon all the variables, every solids interceptor will have to have its own maintenance schedule. A solids interceptor may have to be cleaned weekly, monthly, or annually after initial installation in order to determine optimum maintenance schedule.

NOTES:
Striem Catch Basin tanks are not to be installed in any other manner except as shown. Consult local codes for separate trapping requirements, cleanout locations and additional installation instructions.

PROPRIETARY AND CONFIDENTIAL
THE INFORMATION CONTAINED IN THIS DRAWING IS THE SOLE PROPERTY OF STRIEM, LLC. ANY REPRODUCTION IN PART OR AS A WHOLE WITHOUT THE WRITTEN PERMISSION OF STRIEM, LLC. IS PROHIBITED.

DESCRIPTION:			
SETTLER SERIES INSTALLATION, OPERATION AND MAINTENANCE GUIDE			
SHEET NUMBER: 2 of 4			
DWG BY: MJ	DATE: 09/24/2019	REV:	ECO:

Striem
3100 Brinkerhoff
Kansas City, KS 66115
Tel: 913-222-1500
Fax: 913-291-0457
www.striemco.com

Made in the U.S.A



INTERIOR OR EXTERIOR BELOW GRADE INSTALLATION INSTRUCTIONS
(CB-50-S, CB-50-G, CB-125-S, CB-125-G, CB-275-S)

BELOW GRADE INSTALLATION INSTRUCTIONS

EXCAVATION

1. Install unit(s) as close as possible to fixtures being serviced.
2. Width and length of excavation shall be minimum 12" greater than the tank on all sides.
3. Depth of excavation shall be 6" deeper than tank bottom.
4. Set the tank level in well-packed crushed aggregate material approximately 3/4" size rock, or sand, with no fines.
5. Anchor kit is recommended for installations in high water table conditions to prevent float out. To be determined by specifying engineer. If necessary, order optional "Anchor Kit" (see detail right).

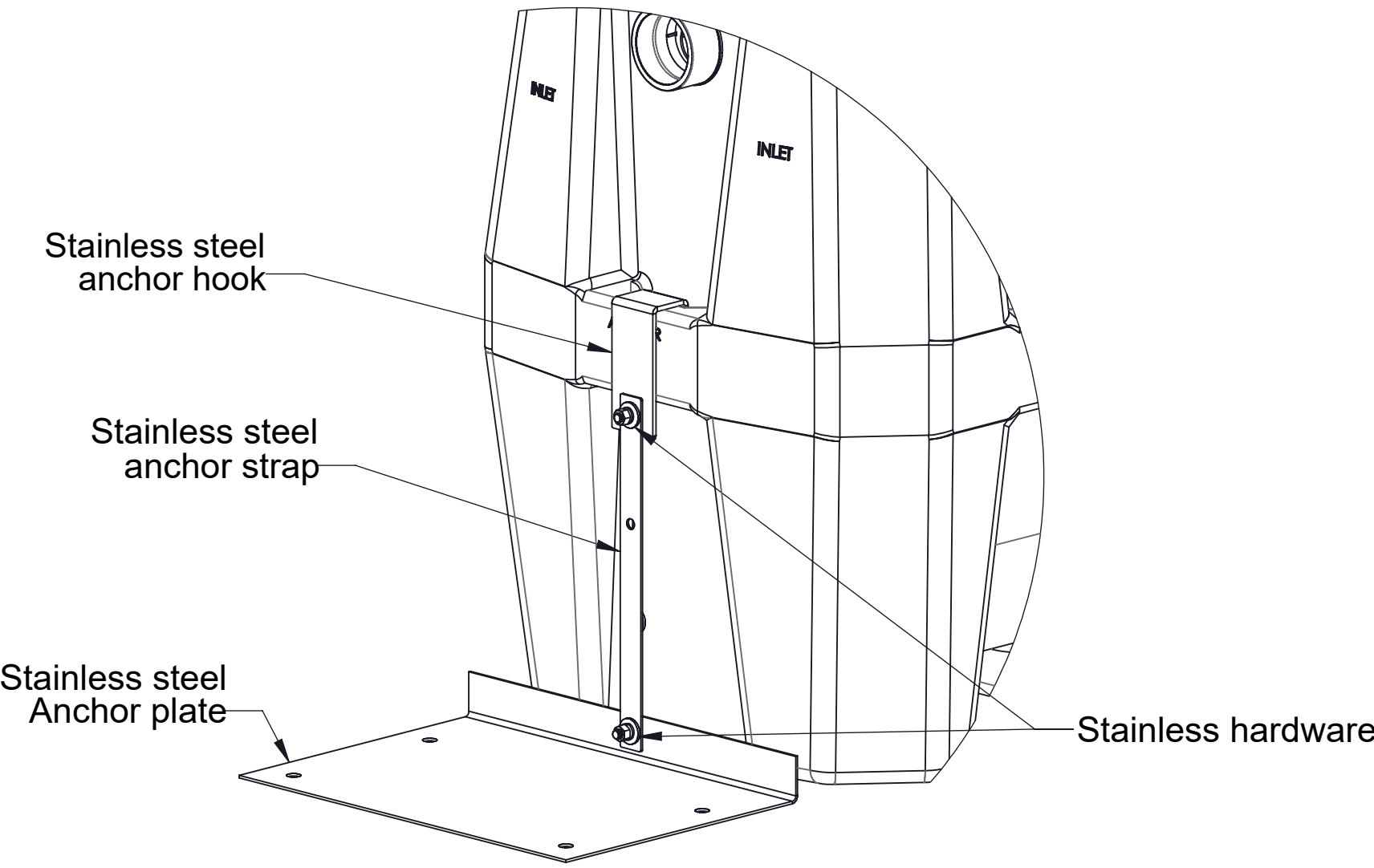
BACKFILLING & FINISHED CONCRETE SLAB

1. Preparation of sub grade per geotech recommendations.
2. Stabilize and compact sub grade to 95% proctor.
3. Fill tank with water before backfilling to prevent float out during piping installation.
4. Before backfilling and pouring of slab secure cover(s) and riser/s (if necessary) to the unit(s)
5. Backfill using crushed aggregate material approximately 3/4" size rock, or sand, with no fines.
6. Place 6" aggregate base under slab. Aggregate should be 3/4" size rock, or sand, with no fines.
7. Thickness of concrete around cover to be determined by specifying engineer. If traffic loading is required the concrete slab dimensions shown are for guideline purposes only.
8. Concrete to be 28 day compressive strength to 4000 PSI.
9. NO. 4 rebar (Ø 1/2") grade 60 steel per ASTM A615: connected with tie wire.
10. Rebar to be 2 1/2" from edge of concrete.
11. Rebar spacing 12" grid. 4" spacing around access openings.
12. All pipe penetrations to be sleeved or have slip connections.

CONNECTIONS

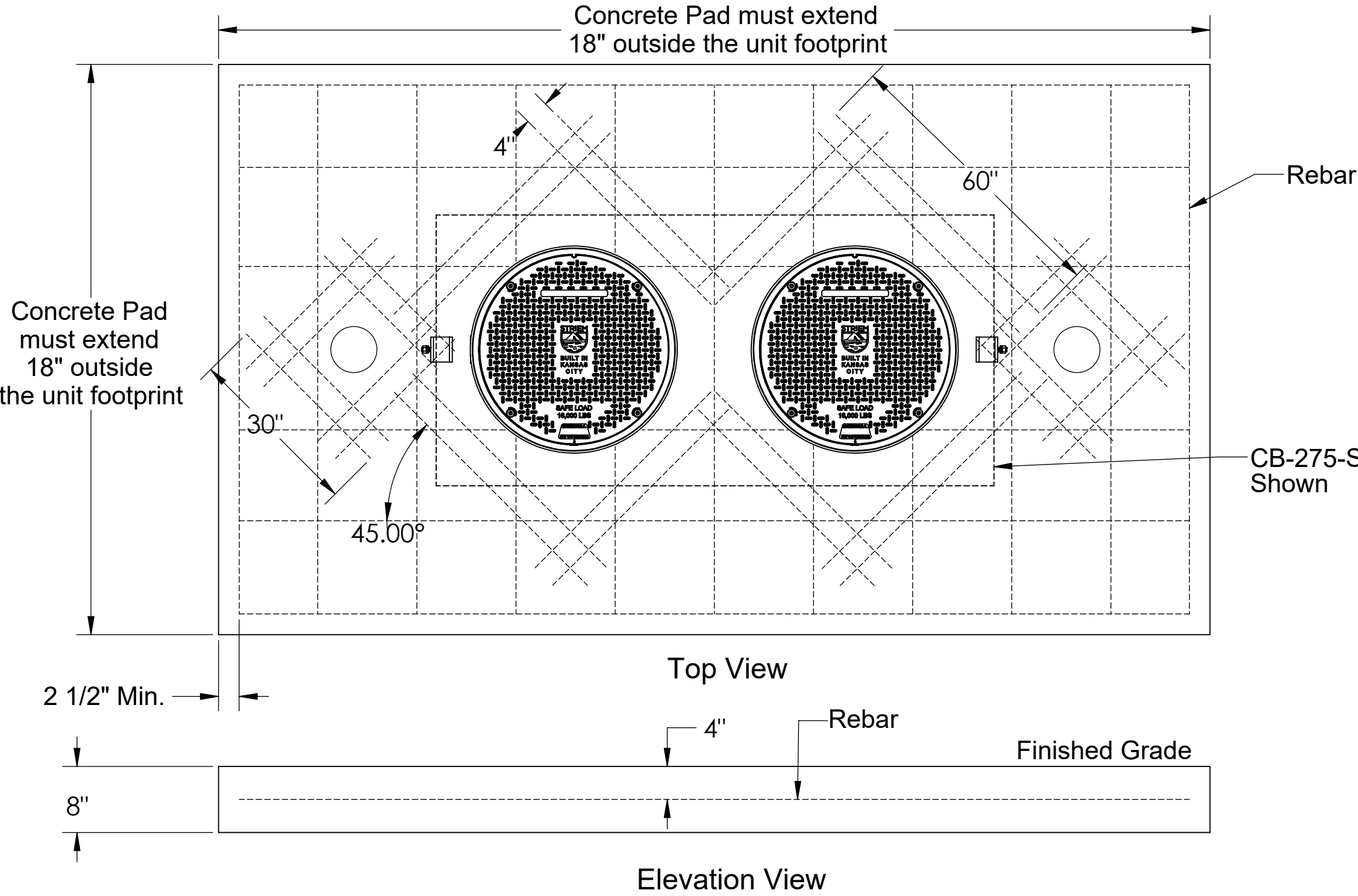
1. Connect waste piping to the unit.

ANCHOR KIT INSTALLATION DETAIL

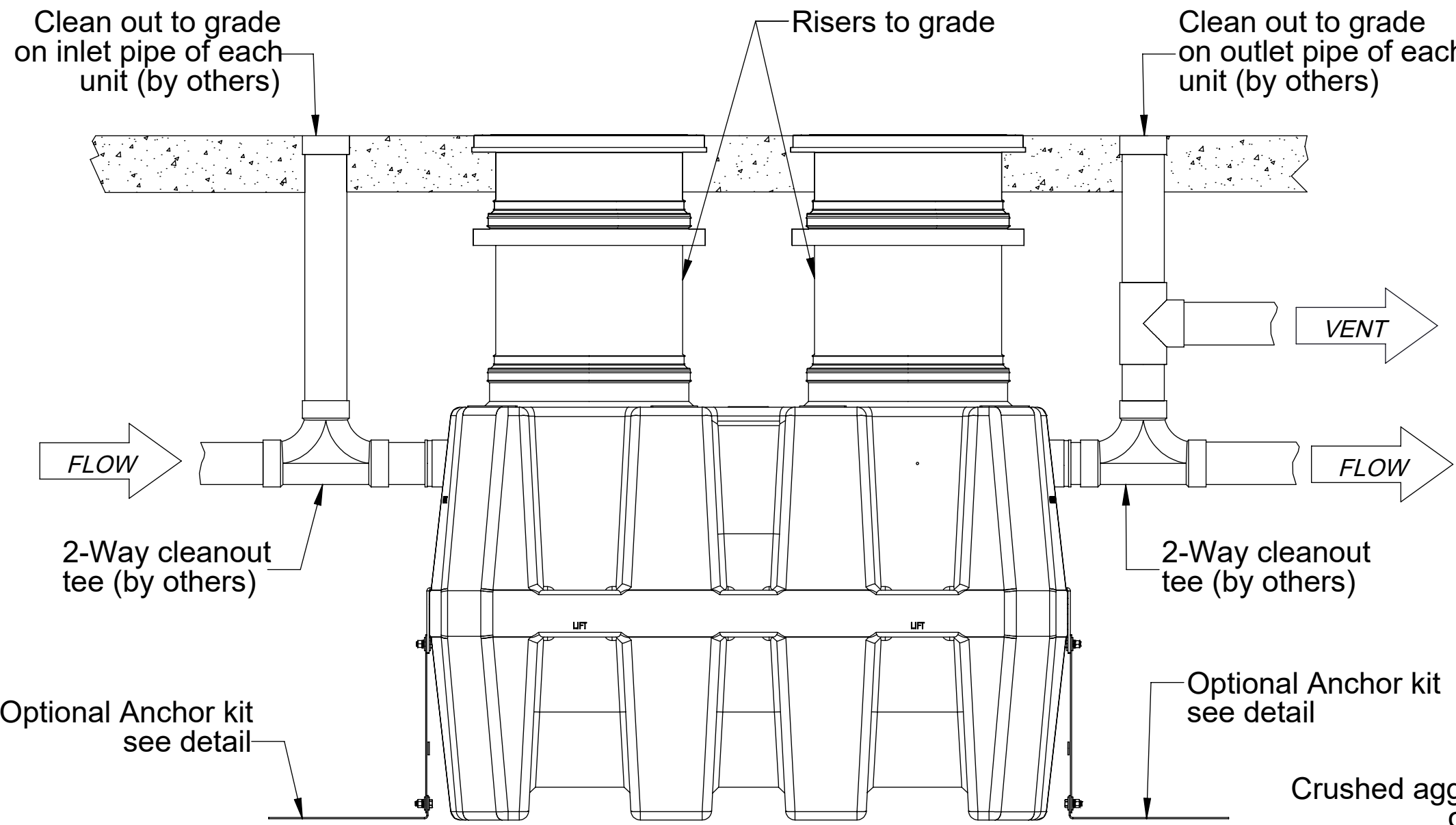


Anchor Kit Installation Steps

1. Slide "Anchor Hook" over tie down point on end wall and bolt to Anchor Strap.
2. Bolt "Anchor Strap" to "Anchor Plate" using provided hardware
3. For CB-50-G/S, Anchor Strap must be cut and shortened on-site to avoid piping.
4. Hold down force achieved by backfill weight acting on Anchor Plate.
5. Anchor Plate may be bolted to concrete slab, if required, by using holes provided in Anchor Plate.

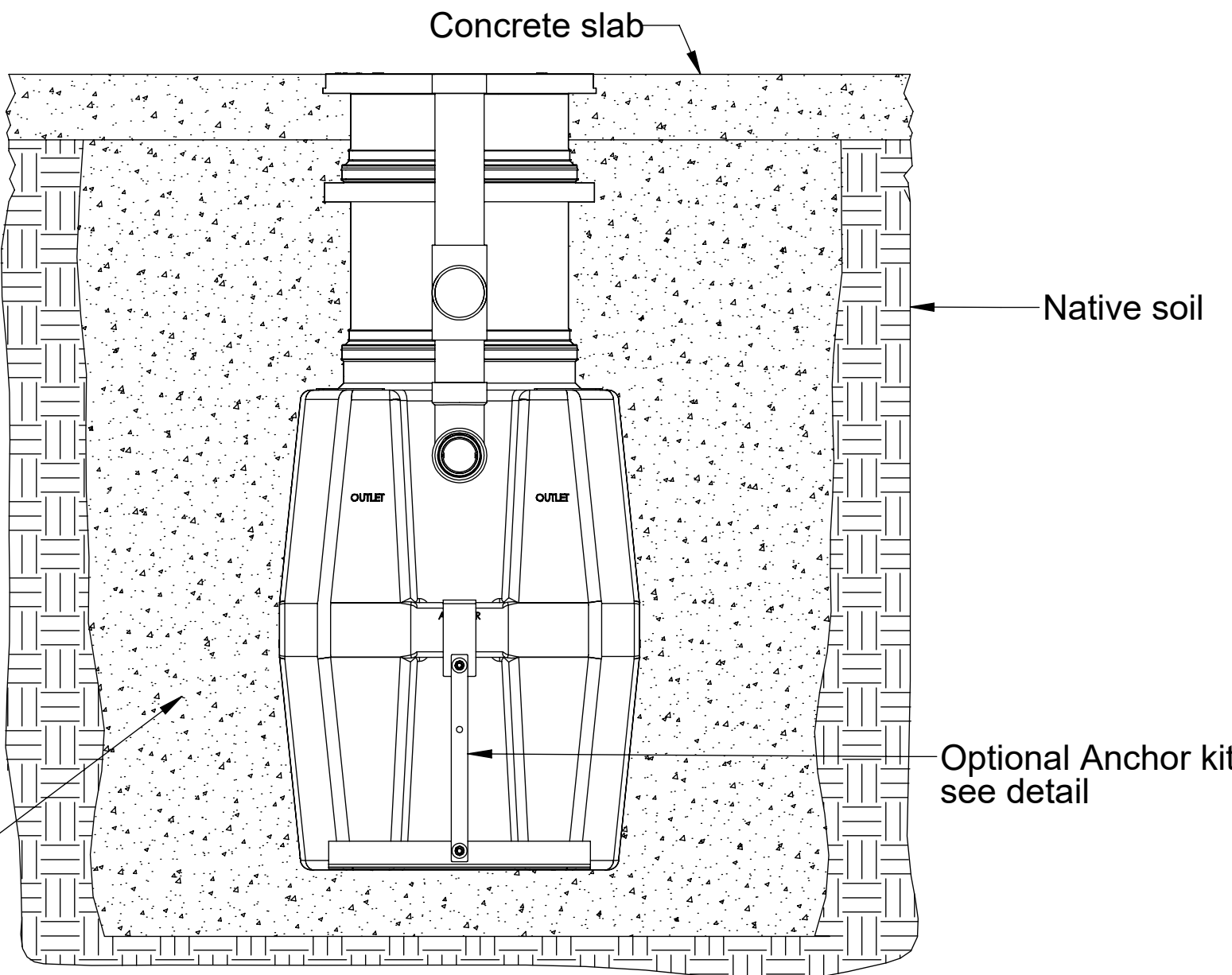


CONCRETE SLAB DETAIL FOR TRAFFIC LOADING
(INTERIOR OR EXTERIOR)
(CB-275-S Shown)



SIDE VIEW DETAIL

For unit details see specification sheet for selected unit
(Connecting pipe and fittings by others)



EXCAVATION AND BACKFILL DETAIL
(INTERIOR OR EXTERIOR)

NOTES:

Striem Catch Basin tanks are not to be installed in any other manner except as shown. Consult local codes for separate trapping requirements, cleanout locations and additional installation instructions.

PROPRIETARY AND CONFIDENTIAL

THE INFORMATION CONTAINED IN THIS DRAWING IS THE SOLE PROPERTY OF STRIEM, LLC. ANY REPRODUCTION IN PART OR AS A WHOLE WITHOUT THE WRITTEN PERMISSION OF STRIEM, LLC. IS PROHIBITED.

DESCRIPTION:

SETTLER SERIES INSTALLATION,
OPERATION AND MAINTENANCE GUIDE

SHEET NUMBER: 3 of 4

DWG BY: MJ

DATE: 09/24/2019

REV:

ECO:

Striem
3100 Brinkerhoff
Kansas City, KS 66115
Tel: 913-222-1500
Fax: 913-291-0457
www.striemco.com

Made in the U.S.A



Tools included (with base catch basin unit(s))

- 7/16" Nut driver tool/bit
- Silver permanent marker

Tools Needed:

- Tape measure
- Regular or cordless drill with 1/2" chuck

Tools needed if Riser(s) require cutting:

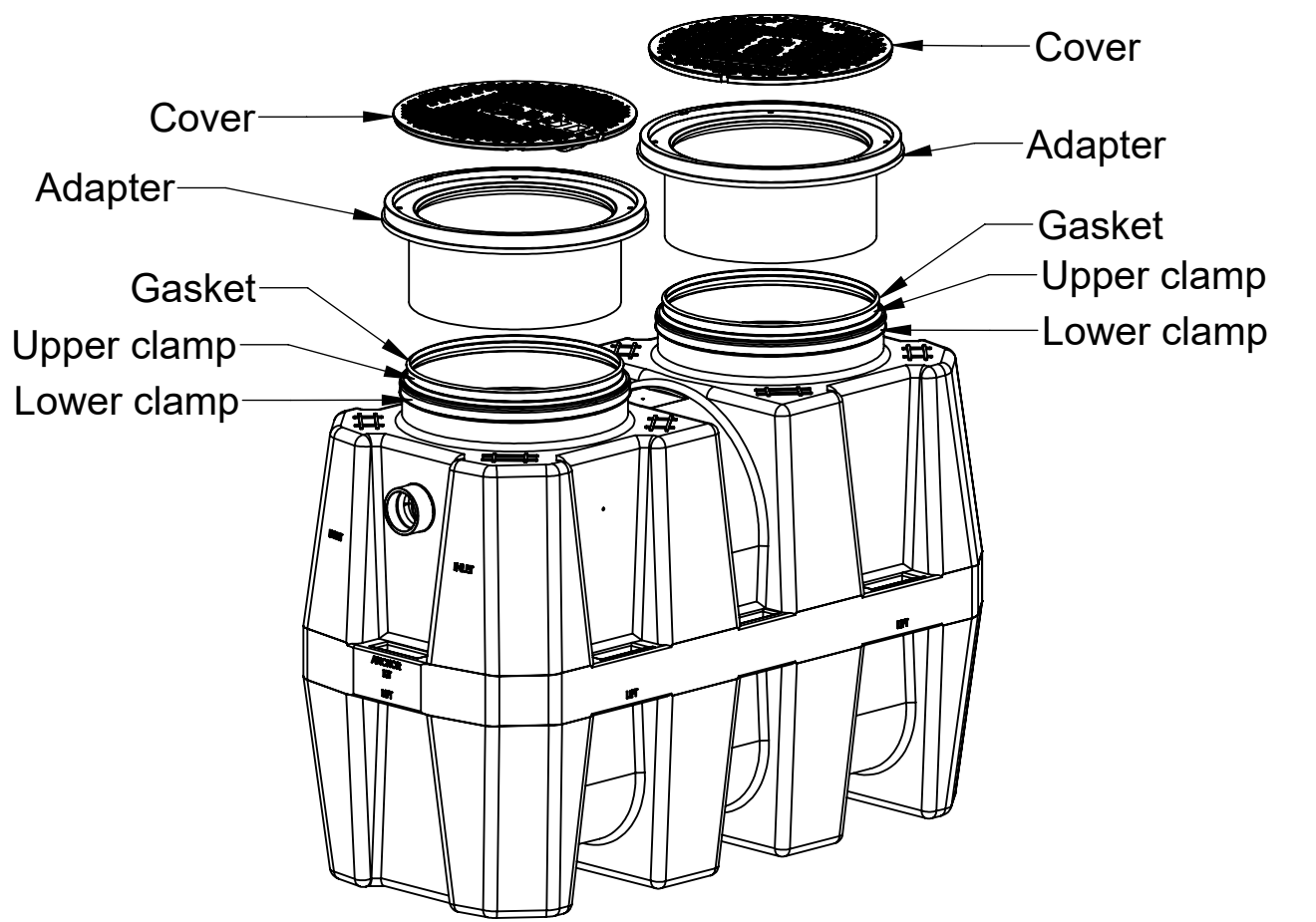
- Jigsaw or
- Cordless circular saw or
- Reciprocating saw

Riser Assembly Instructions/Steps:

1. If the unit is to be installed on grade (on-the-floor), there is no need for any adjustments. the unit is ready to be put into service.
2. If the unit is to be buried: Once the unit is set up so that the pipe connections line up with the jobsite piping, measure the total riser height needed from the top of the cover to finished grade. Make sure you include any future tile work, etc. that may be installed in your finished grade measurements. See figure 1.
3. Select the according riser(s) needed based off Table 1.
4. If riser(s) is needed, remove cover(s) from the adapter(s) and remove the adapter(s) from the main unit by loosening the upper clamp with included nut driver bit (lower band is factory set, do not adjust or remove). On the floor near the unit, insert the adapter into the first riser until it stops. If needed, insert the bottom of the first riser into the top of second riser until it stops. You may need to tighten the upper clamps during this step to keep the risers from shifting. Adapter and riser(s) should sit level with each other. Removal of cover during this process will ease assembly.
5. From the top of the adapter, measure your needed total riser height downward to the sidewall of the riser. Then, add 5" (CB-50) or 6" (for CB-125 or CB-275). For example, if you have a CB-275 and need a 15-1/2" extension, you would measure down from the top of the adapter 21-1/2" (15-1/2" + 6" = 21-1/2"). See Figure 2.
6. Refer to Table 2 or Table 3 to determine if, and where, any cuts need to be made. If a cut needs to be made, make a circular line around the sidewall of the riser with the included silver marker at your riser height +dimension from step 5. Using a jigsaw, circular saw or reciprocating saw, cut along your line. Discard/recycle the cutoff scrap.
7. Whether the riser needs to be cut or not, make another mark with the silver marker on the sidewall of the riser a distance of 4 INCHES the edge just cut. If you did not make a cut (meaning your riser height + dimension from step 5 line was beyond the bottom edge of your riser), still mark the sidewall of the riser 4 INCHES above where your riser height + dimension from step 5 line would have been. DO NOT cut this new line. Once the riser is installed into the main unit, this new line will end up at the top of the gasket and will aid in re-assembly. See Figure 3.
8. IMPORTANT: Before the next step: Make sure both diffusers are installed inside the main unit at the appropriate locations and check if there needs to be any flow control adjustment on the inlet diffuser. Refer to sheet 2 of the installation instructions for flow control adjustment. Refer to sheet 1 of the installation instructions for leak/water testing procedures.
9. Take riser(s) and adapter(s) apart to reduce the weight during installation. Wipe all sidewalls and inside of gasket with a damp cloth to remove jobsite dust/debris. Install components into the main unit starting from the lowest (cut) riser and working your way toward the finished floor level. Upper clamps at each gasket need to be loosened or removed to aid in assembly. Once riser(s)/adapter(s) is inserted into gasket, upper clamp can be tightened.
10. Verify that the bottom of the lowest riser is protruding at least 2-1/2" but no more than 4" into the main unit from the top of the gasket. Your mark from step 7 should be at the top edge of the gasket on the main unit. If measurements were made correctly, this should happen automatically. See figure 4.
11. If tilting of the adapter is required to be flush with finished grade, it must be done AFTER all clamps have been tightened with riser(s)/adaptor in a vertical and level position. Tilting is achieved by using the flexibility of the gasket. If tilting is done before clamps are tightened, a perfect gasket seal may be compromised. Striem recommends tilting only the adapter versus the entire riser assembly to make sure your riser height is maintained.
12. Tighten all clamps to a minimum of 5 and a maximum of 8 ft lbs. of torque. Use the same torque as you would tighten a rubber no-hub coupling.
13. The adapter must be adjusted upward to achieve certain extension heights. See Table 2 or Table 3.
14. If jobsite riser height conditions change after the above steps have been completed, there may still be room for vertical adjustment in both directions. As long as minimum and maximum overlaps are maintained (see Figure 4), the adapter/riser(s) can be adjusted/cut as many times as necessary. Please follow these steps from the beginning to ensure the proper overlaps are maintained.

TeleGlide Riser (24 Series) Installation Guidelines

(Models CB-50-S, CB-50-G, CB-125-S, CB-125-G, CB-275-S)



CB-275 (standard)

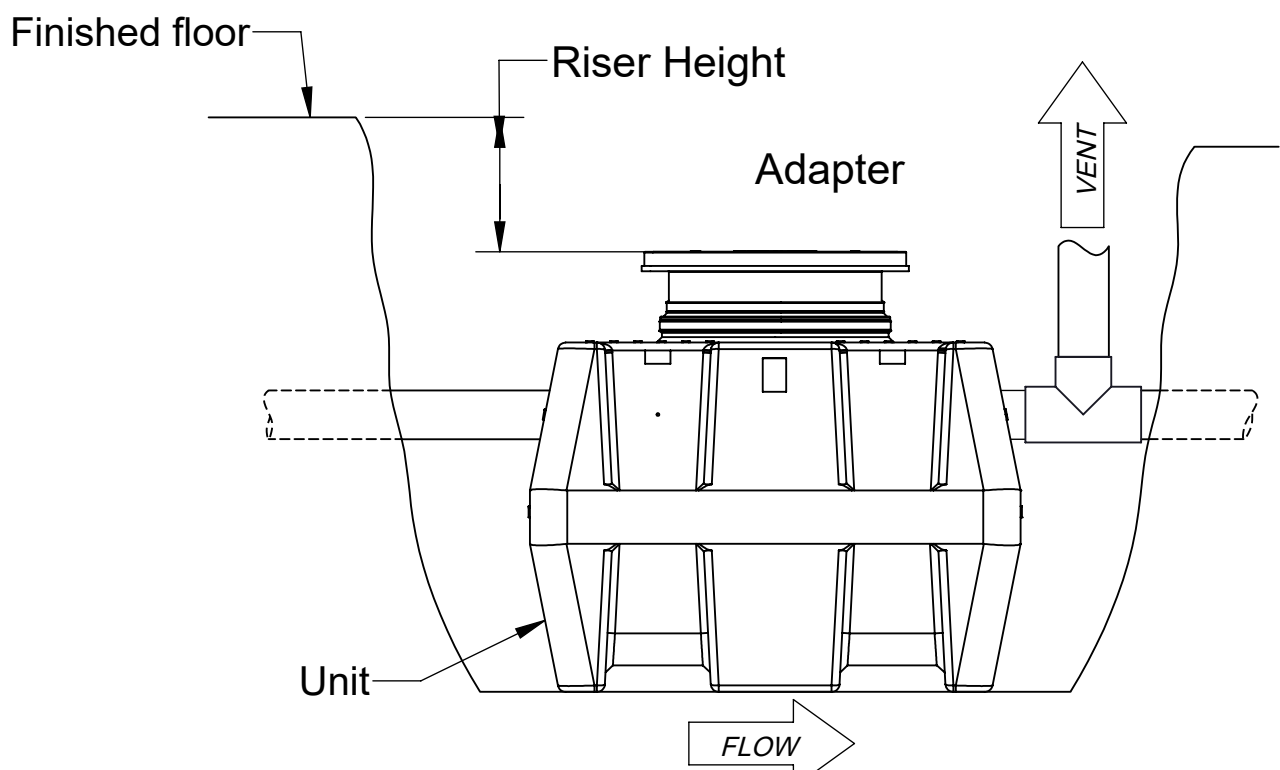
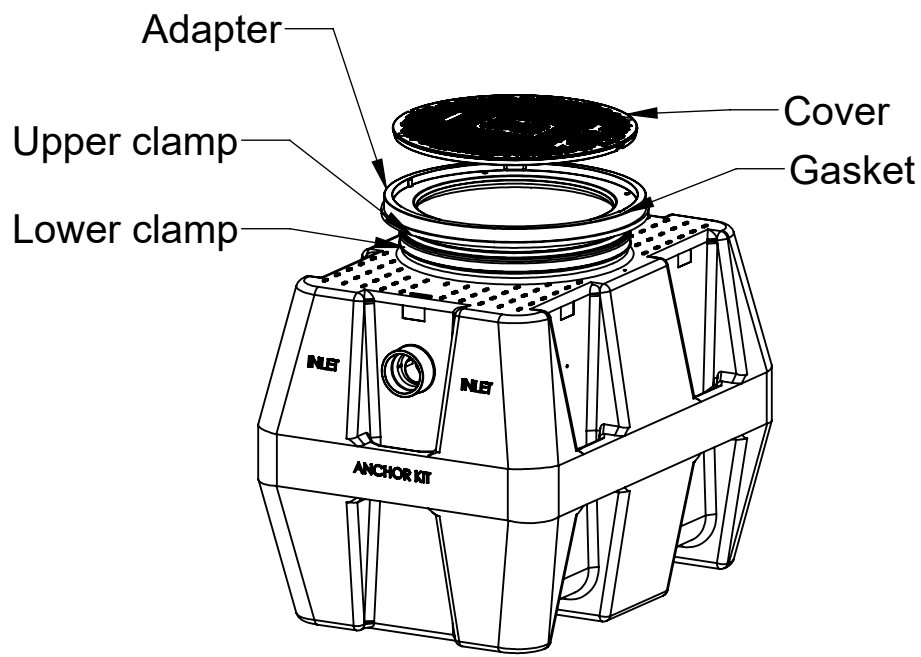


Figure 1



CB-50 & CB-125 (standard)

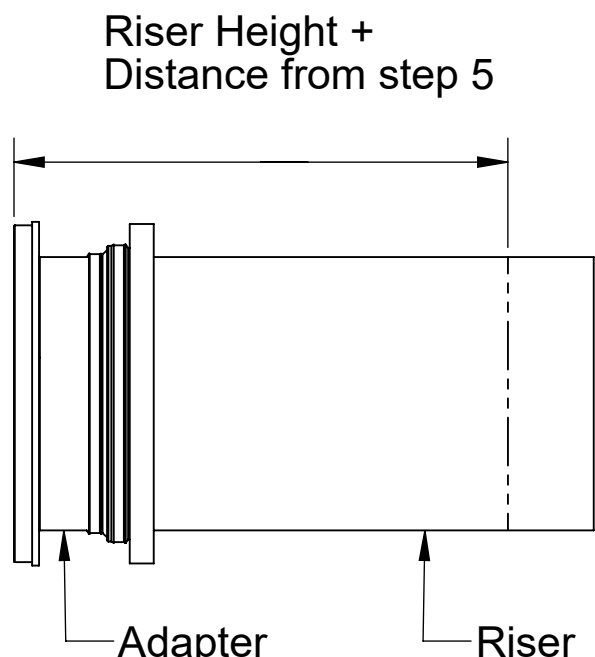
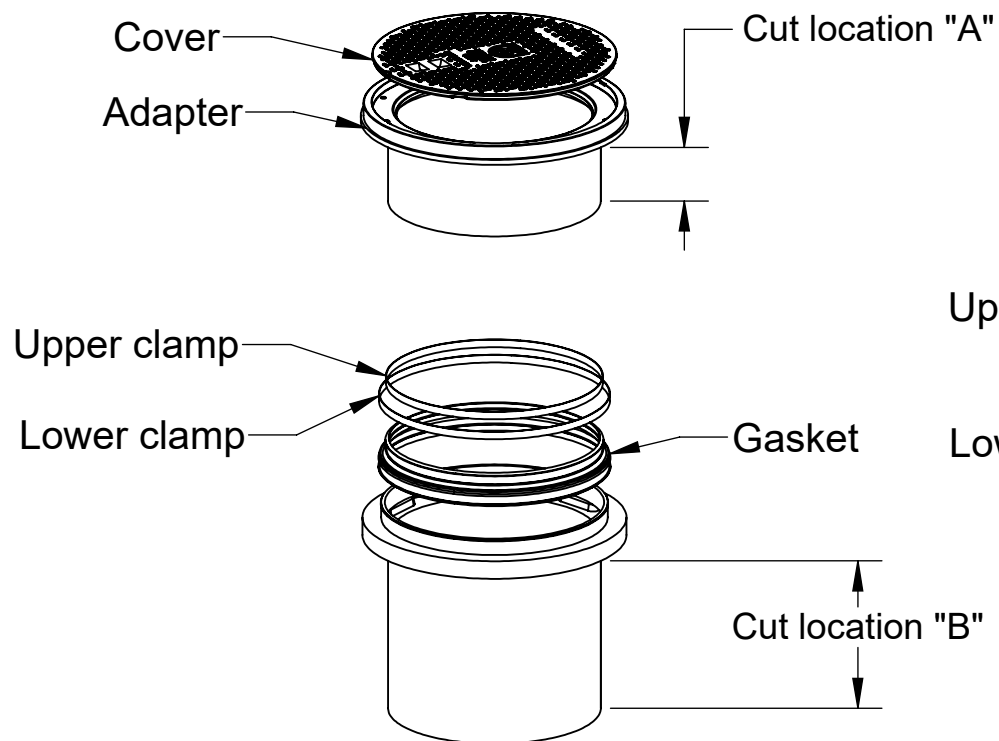
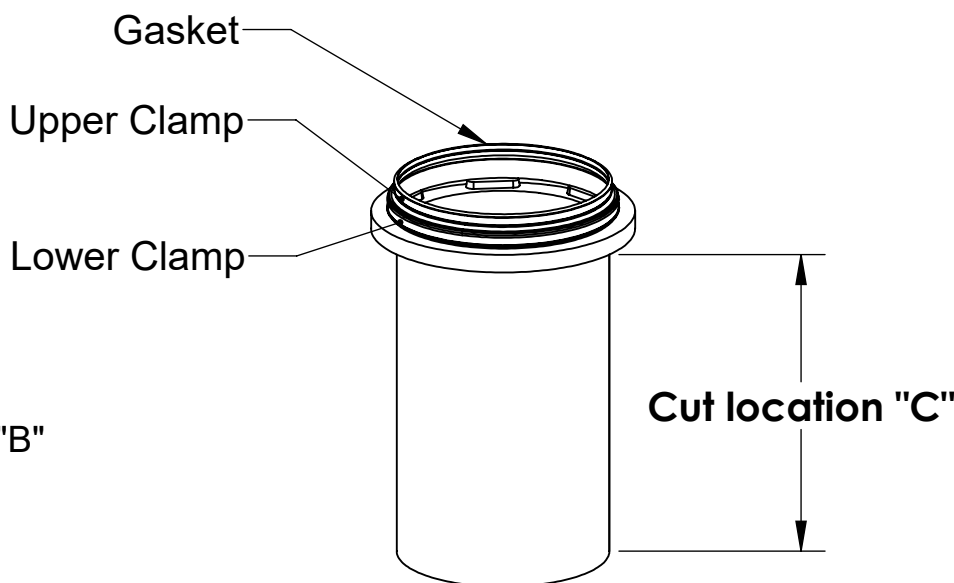


Figure 2



SR24 (short riser) (optional component)



LR24 (long riser) (optional component)

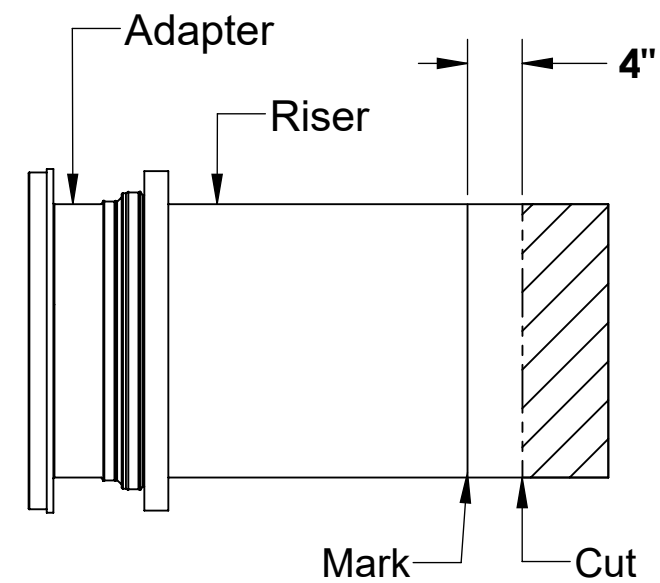


Figure 3

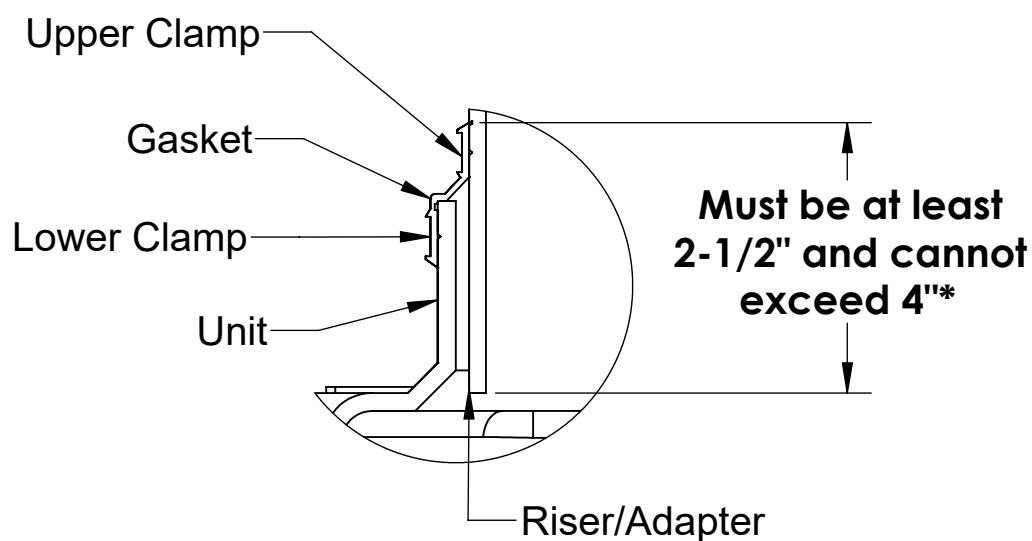


Figure 4

Table 1								
TeleGlide Riser Order Guide								
CB-50			CB-125			CB-275		
Riser Height	Riser Qty.		Riser Height	Riser Qty.		Riser Height	Riser Qty.	
	SR24	LR24		SR24	LR24		SR24	LR24
>3-1/2" to 22"	1	0	>6" to 24"	1	0	>6" to 24"	2	0
>22" to 37"	0	1	>24" to 39"	0	1	>24" to 39"	0	2
			>39" to 43"	2	0	>39" to 43"	4	0
			>43" to 58"	1	1	>43" to 58"	2	2
			>58" to 72"	0	2	>58" to 72"	0	4

Table 3 (for CB-50)			
Riser Height Needed	Riser P/N Needed	Riser Qty. Needed	Cut Location(s) (See figures above)
0" to 3-1/2"	None	0	None
>3-1/2" to 6-1/2"	SR24	1	a,b
>6-1/2" to 17"	SR24	1	b
>17" to 22"	SR24	1	None ⁵
>22" to 32"	LR24	1	c
>32" to 37"	LR24	1	None ⁵

5. Adjust adapter upwards to reach 20" to 22"
6. Adjust adapter upwards to reach 35" to 37"

Table 2 (for CB-125 and CB-275)				
Riser Height Needed	Riser P/N Needed	Riser Qty. Needed		Cut Location(s)
		GB-75 (Note 5)	GB-250	
0" to 6"	None	0	0	None
>6" to 8-1/4"	SR24	1	2	a,b
>8-1/4" to 19-3/4"	SR24	1	2	b
>19-3/4" to 24"	SR24	1	2	None ¹
>24" to 35"	LR24	1	2	c
>35" to 39"	LR24	1	2	None ²
>39" to 43"	SR24	2	4	b
>43" to 51-1/2"	SR24	1	2	c
	LR24	1	2	
>51-1/2" to 58"	SR24	1	2	None ³
	LR24	1	2	
>58" to 66-1/2"	LR24	2	4	c
>66-1/2" to 72"	LR24	2	4	None ⁴

1. Adjust adapter upwards to reach 22" to 24"
2. Adjust adapter upwards to reach 37" to 39"
3. Adjust adapter upwards to reach 56" to 58"
4. Adjust adapter upwards to reach 70" to 72"

Call Striem with questions or suggestions @ 1-913-222-1500 Customer Service Hours: 8AM-5PM CST

NOTES:

Striem Catch Basin tanks are not to be installed in any other manner except as shown. Consult local codes for separate trapping requirements, cleanout locations and additional installation instructions.

PROPRIETARY AND CONFIDENTIAL

THE INFORMATION CONTAINED IN THIS DRAWING IS THE SOLE PROPERTY OF STRIEM, LLC. ANY REPRODUCTION IN PART OR AS A WHOLE WITHOUT THE WRITTEN PERMISSION OF STRIEM, LLC. IS PROHIBITED.

DESCRIPTION:

SETTLER SERIES INSTALLATION,
OPERATION AND MAINTENANCE GUIDE

SHEET NUMBER: 4 of 4

DWG BY: MJ

DATE: 09/24/2019

REV:

ECO:

Striem
3100 Brinkerhoff
Kansas City, KS 66115
Tel: 913-222-1500
Fax: 913-291-0457
www.striemco.com

Made in the U.S.A

