

SOUTH FLORIDA CATCH BASIN SOLIDS INTERCEPTORS
(Models CB-50-SFL, CB-125-SFL, CB-275-SFL)

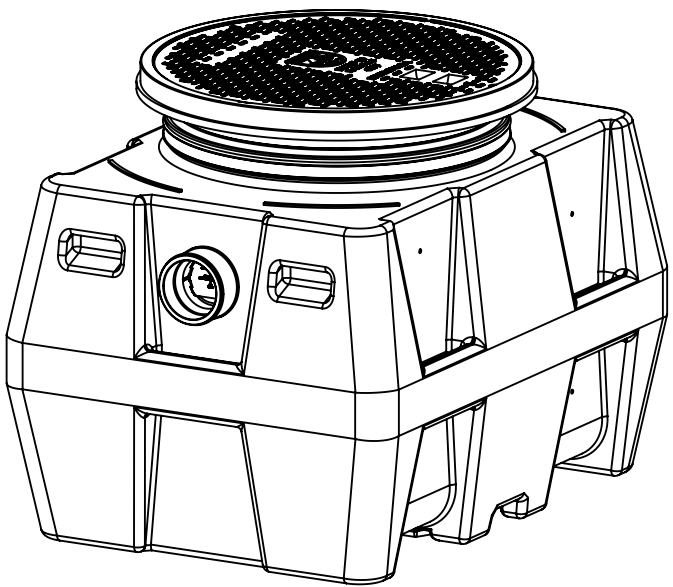
!

WARNING

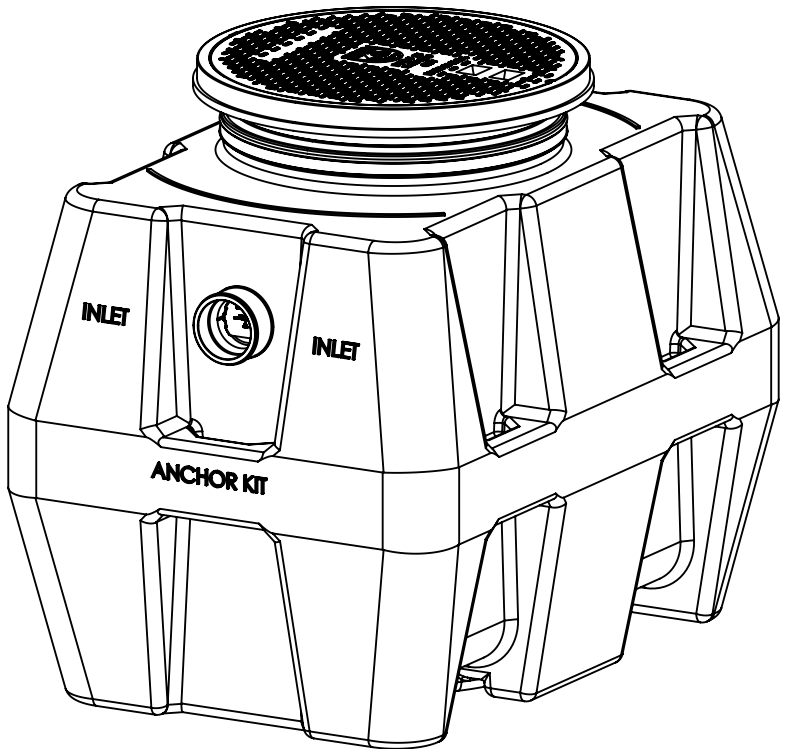
DO NOT AIR PRESSURE TEST UNIT!

DOING SO MAY RESULT IN PROPERTY DAMAGE, SERIOUS BODILY INJURY, OR DEATH!
REFER TO INSTALLATION INSTRUCTIONS FOR CORRECT TESTING PROCEDURE.

AIR



CB-50-SFL
50 gpm, 52 gallons



CB-125-SFL
75 gpm, 125 gallons



CB-275-SFL
100 gpm, 250 gallons

Sheet Descriptions

Sheet #1 - Series overview and Warranty information
Sheet #2 - General installation guidelines and Operation/Maintenance guidelines
Sheet #3 - Below Grade installation guidelines (Models CB-50-SFL, CB-125-SFL, CB-275-SFL)
Sheet #4 - TeleGlide Riser installation guidelines (Models CB-50-SFL, CB-125-SFL, CB-275-SFL)

Leak/Seal Testing

DO NOT AIR TEST UNIT OR TELEGLIDE RISER SYSTEM! Doing so may result in property damage, personal injury or death.

Base Unit: To perform a leak/seal test on the base unit, cap/plug all plumbing connections, remove the cover, and fill the unit with water just above the highest connection. Inspect unit and connections for leaks. Check water level at specific time intervals per local code.

TeleGlide Riser System: If required by local code, the riser system may be leak/seal tested similar to the base unit. **CAUTION:** the riser(s) must be supported before filling with water to keep from tipping over. Once riser system is in place and properly supported, cap/plug all plumbing connections on the main unit, remove the cover from the top of the riser assembly and fill the unit and riser system with water to finished grade level. Carefully, as the riser(s) will be very heavy from the weight of the water, inspect all gasket(s) and clamps (if applicable) for any leaks. Check water level at specific time intervals per local code.

Lifetime Warranty

Effective March 2, 2015 Striem represents and warrants that HDPE products (“Products”) will be free from any and all defects in material and workmanship, including corrosion, during the lifetime of the plumbing system in which the Products were originally installed and will, at its option, agree to repair, replace, or supply credit to the original purchaser.


This warranty does not cover damage caused by the Products’ normal usage, or wear and tear, nor does it cover damage from naturally occurring phenomenon, including, but not limited to UV, freeze-related damage, or natural disasters. This warranty does not cover the purchaser’s cost of routine maintenance including replacement of parts required in routine maintenance.

This warranty does not cover fabricated steel products, or any monitoring equipment. This warranty shall be effective if, and only if, the Products:
* Were installed in accordance with Striem’s notes, specifications and instructions, for installation, operation, and maintenance;
* Were installed in conformance with all applicable building and plumbing codes, and passed all applicable testing methods immediately following installation;
* Have not been subjected to misuse or abuse, whether negligent or intentional;
* Were never modified, repaired, or altered by any individual(s) not authorized by Striem.

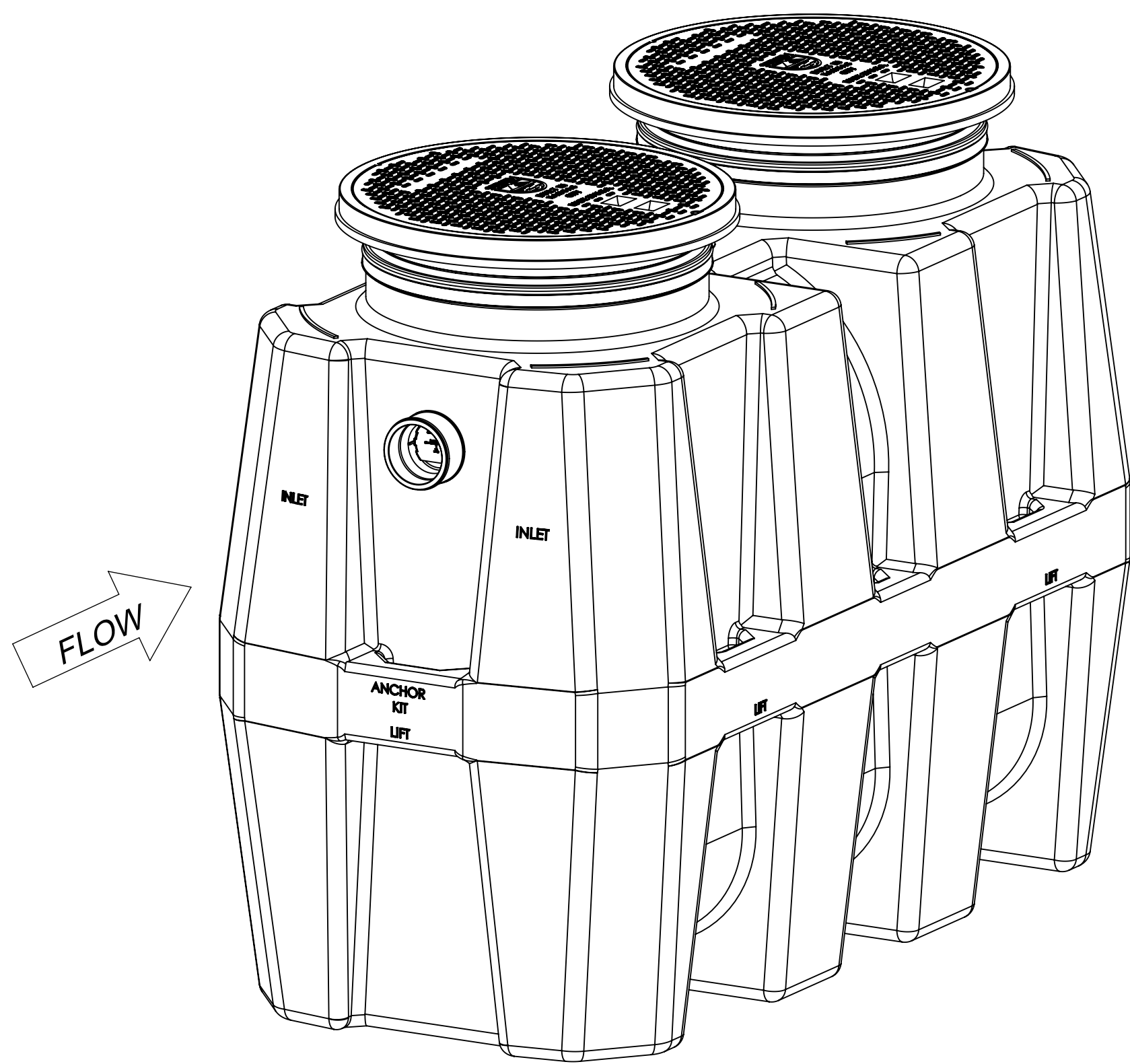
This warranty is the purchaser’s sole and exclusive remedy, and acceptance of this exclusive remedy is a condition of the contract for the purchase of these Products. In no event shall Striem be liable for any incidental, special, consequential or punitive damages, or for any costs, attorney fees, expenses, losses or delays claimed to be as a consequence of any damage to, failure of, or defect in any products including, but not limited to, any claims for loss of profits, transportation, removal and installation charges. This warranty is exclusive and in lieu of all other warranties or conditions, written or oral, expressed or implied.

NOTES:
Striem Catch Basin tanks are not to be installed in any other manner except as shown. Consult local codes for separate trapping requirements, cleanout locations and additional installation instructions.

PROPRIETARY AND CONFIDENTIAL
THE INFORMATION CONTAINED IN THIS DRAWING IS THE SOLE PROPERTY OF STRIEM, LLC. ANY REPRODUCTION IN PART OR AS A WHOLE WITHOUT THE WRITTEN PERMISSION OF STRIEM, LLC, IS PROHIBITED.

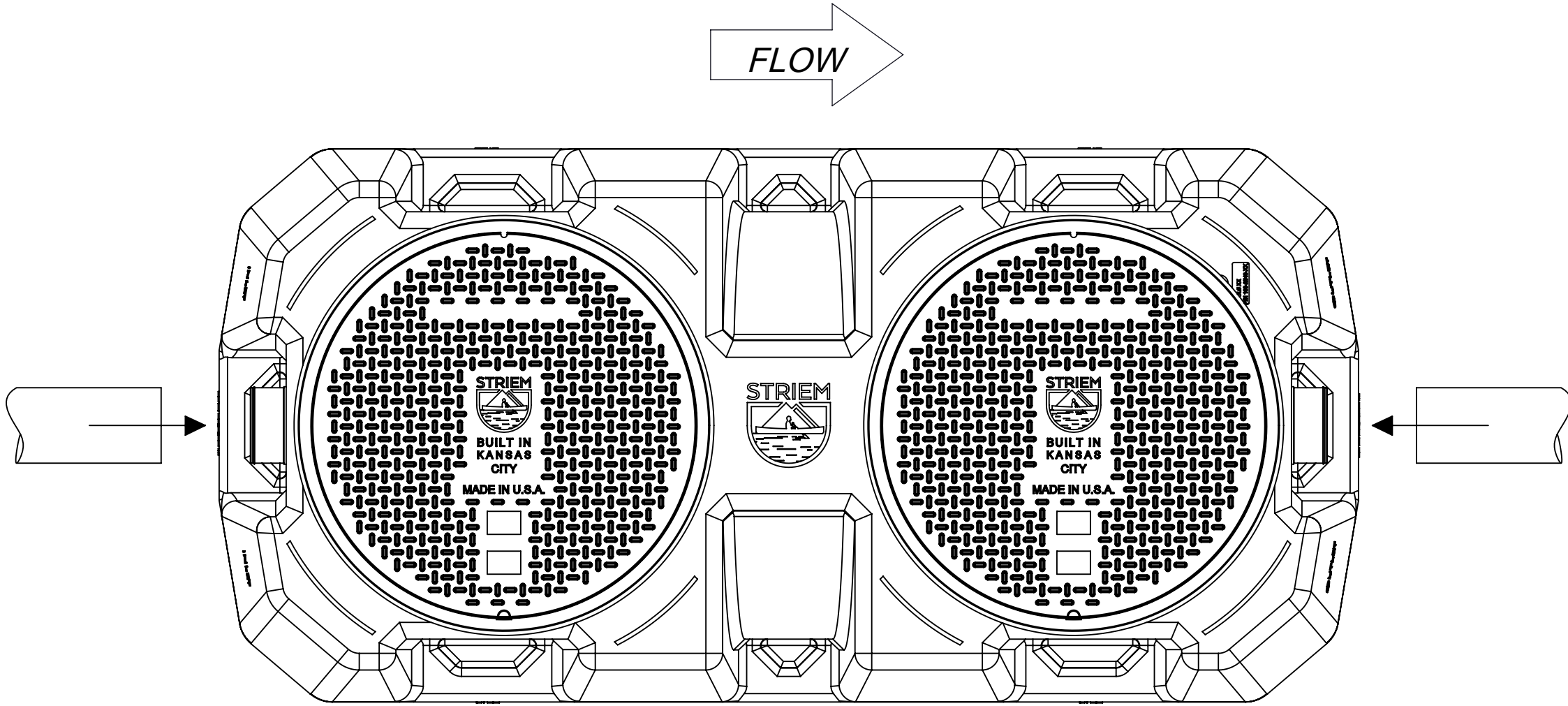
DESCRIPTION: SOUTH FLORIDA CATCH BASIN SOLIDS INTERCEPTORS - IOM GUIDE				Striem 3100 Brinkerhoff Kansas City, KS 66115 Tel: 913-222-1500 Fax: 913-291-0457 www.striemco.com Made in the U.S.A	
SHEET NUMBER: 1 of 4					
DWG BY: RS	DATE: 11/13/18	REV:	ECO:		

GENERAL INTERCEPTOR INSTALLATION INSTRUCTIONS
(CB-275-SFL SHOWN)



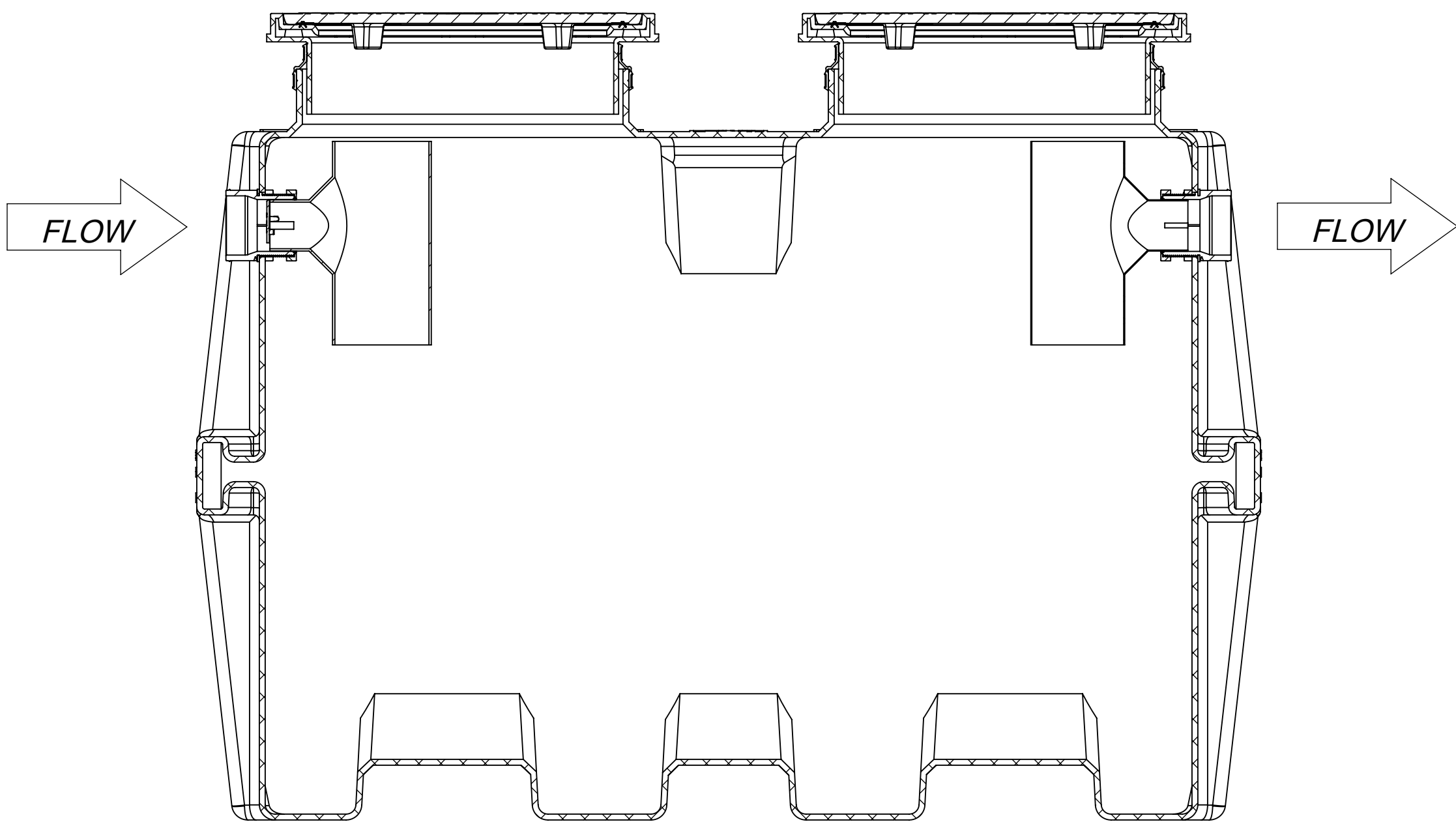
Isometric View

Set unit on level solid surface as close as possible to fixtures being served. If unit is to be installed below grade refer to below grade installation instructions. (sheet #3)



Top View

Connect inlet and outlet drainage lines to unit.
Mechanically couple pipes to unit.
Do not solvent weld.



CB-275-SFL

OPERATION

Striem SFL Series solids interceptors are designed to settle out food waste, heavy sand, and sediment that may enter the waste system. Wastewater enters the settling chamber where heavy debris settles out before the wastewater exits through the outlet.

MAINTENANCE

1. Remove cover(s).
2. Clean main body of the interceptor. Make sure to remove all accumulated water, debris, and sediment.
3. Clean sidewalls of any accumulated debris. Do not allow any material to enter into the plumbing system.
4. Replace cover(s). Inspect gasket on underside of cover(s) for wear and tear.
5. Run fixture(s) with water to fill interceptor.
6. Properly dispose of collected material.

PUMPING FREQUENCY:

Based upon all the variables, every solids interceptor will have to have its own maintenance schedule. A solids interceptor may have to be cleaned daily, weekly, or monthly after initial installation in order to determine optimum maintenance schedule.

NOTES:
Striem Catch Basin tanks are not to be installed in any other manner except as shown. Consult local codes for separate trapping requirements, cleanout locations and additional installation instructions.

PROPRIETARY AND CONFIDENTIAL

THE INFORMATION CONTAINED IN THIS DRAWING IS THE SOLE PROPERTY OF STRIEM, LLC. ANY REPRODUCTION IN PART OR AS A WHOLE WITHOUT THE WRITTEN PERMISSION OF STRIEM, LLC, IS PROHIBITED.

DESCRIPTION:			
SOUTH FLORIDA CATCH BASIN SOLIDS INTERCEPTORS - IOM GUIDE			
SHEET NUMBER: 2 of 4			
DWG BY: RS	DATE: 11/13/18	REV:	ECO:

Striem
3100 Brinkerhoff
Kansas City, KS 66115
Tel: 913-222-1500
Fax: 913-291-0457
www.striemco.com

Made in the U.S.A



The logo for STRIEM (Streektoerisme Internationaal) is located in the top right corner. It consists of the word "STRIEM" in a bold, sans-serif font above a shield-shaped emblem. The emblem depicts a silhouette of a person in a canoe on a body of water, with two stylized mountains in the background.

Tools included

- 7/16" Nut driver tool/bit
- Silver permanent marker

Tools Needed:

- Tape measure
- Regular or cordless drill with 1/2" chuck

Tools needed if Riser(s) require cutting:

- Jigsaw or
- Cordless circular saw or
- Reciprocating saw

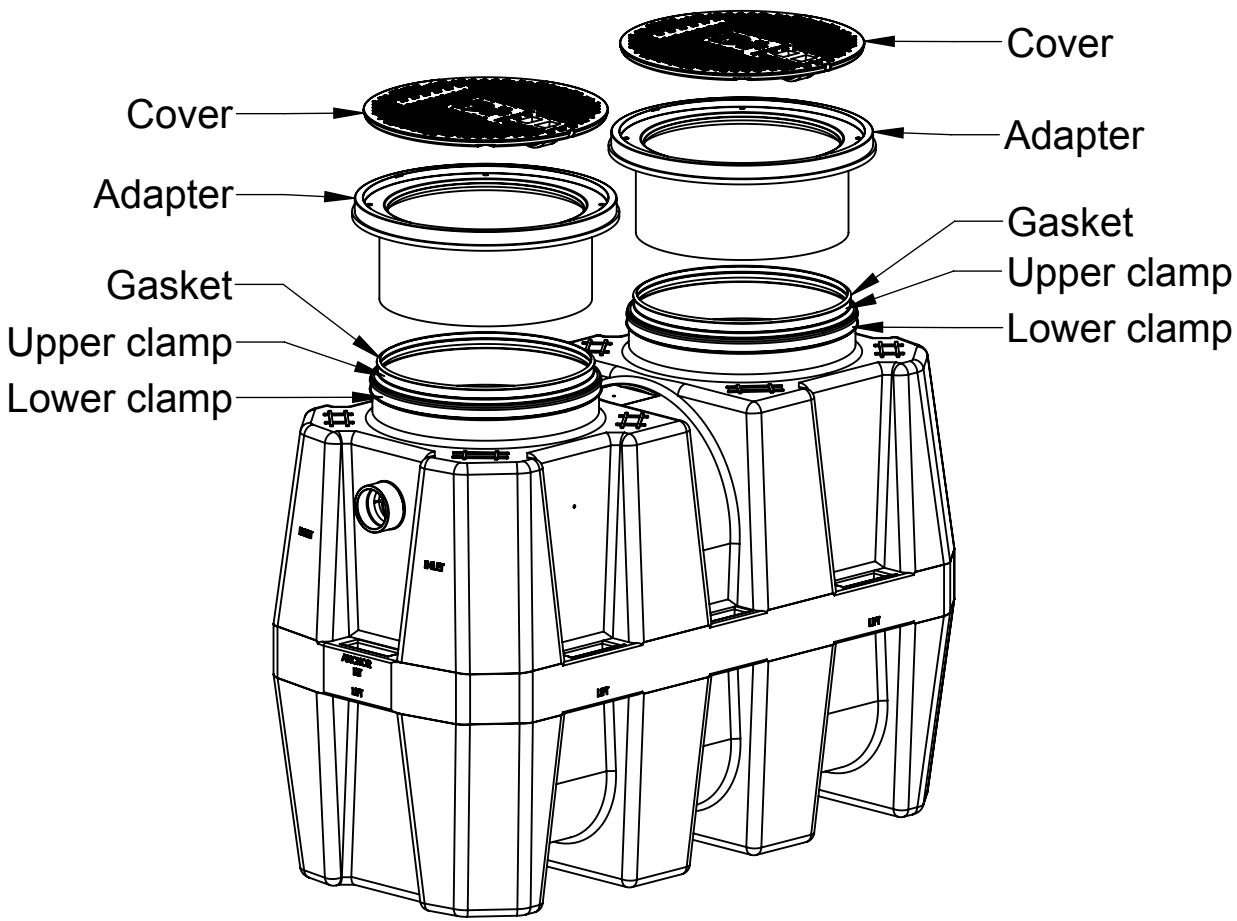
Riser Assembly Instructions/Steps:

- If unit is to be installed on grade (on-the-floor), there is no need for any adjustments. Unit is ready to be put into service.
- If unit is to be buried: Once unit is set so that the pipe connections line up with jobsite piping, measure total riser height needed from top of cover to finished grade. Make sure you include any future tile work, etc. that may be installed in your finished grade measurements. See figure 1.
- Select according riser(s) needed based off Table 1.
- If riser(s) is needed, remove cover(s) from adapter and remove adapter from main unit by loosening upper clamp with included nut driver bit (lower band is factory set do not adjust or remove). On the floor near the unit, insert adaptor into first riser until it stops. If needed, insert bottom of first riser into top of second riser until it stops. You may need to tighten upper clamps during this step to keep risers from shifting. Adapter and riser(s) should sit level with each other. Removal of cover during this process will ease assembly.
- From the top of the adapter, measure your needed total riser height downward to the sidewall of the riser. Then, add 5" (CB-50-SFL) or 6" (for CB-125-SFL or CB-275-SFL). For example, if you have a CB-275-SFL and need a 15-1/2" extension, you would measure down from the top of the adapter 21-1/2" (15-1/2" + 6" = 21-1/2"). See Figure 2.
- Refer to Table 2, Table 3 or Table 3a to determine if, and where, any cuts need to be made. If a cut needs to be made, make a circular line around the sidewall of the riser with the included silver marker at your riser height +dimension from step 5. Using a jigsaw, circular saw or reciprocating saw, cut along your line. Discard/recycle the cutoff scrap.
- Whether the riser needs to be cut or not, make another mark with the silver marker on the sidewall of the riser a distance of 4 INCHES the edge just cut. If you did not make a cut (meaning your riser height + dimension from step 5 line was beyond the bottom edge of your riser), still mark the sidewall of the riser 4 INCHES above where your riser height + dimension from step 5 line would have been. DO NOT cut this new line. Once the riser is installed into the main unit, this new line will end up at the top of the gasket and will aid in re-assembly. See Figure 3.
- IMPORTANT: Before the next step: Make sure both diffusers are installed inside the main unit at the appropriate locations and check if there needs to be any flow control adjustment on the inlet diffuser. Refer to sheet 2 of the installation instructions for flow control adjustment.
- Refer to sheet 1 of the installation instructions for leak/water testing procedures.
- Take riser(s) and adapters apart to reduce the weight during installation. Wipe all sidewalls and inside of gasket with a damp cloth to remove jobsite dust/debris. Install components into the main unit starting from the lowest (cut) riser and working your way toward the finished floor level. Upper clamps at each gasket need to be loosened or removed to aid in assembly. Once riser(s)/adapter is inserted into gasket, upper clamp can be tightened.
- Verify that the bottom of the lowest riser is protruding at least 2-1/2" but no more than 4" into the main unit from the top of the gasket. Your mark from step 7 should be at the top edge of the gasket on the main unit. If measurements were made correctly, this should happen automatically. See figure 4.
- If tilting of the adapter is required to be flush with finished grade, it must be done AFTER all clamps have been tightened with riser(s)/adaptor in a vertical and level position. Tilting is achieved by using the flexibility of the gasket. If tilting is done before clamps are tightened, a perfect gasket seal may be compromised. Schier recommends tilting only the adapter versus the entire riser assembly to make sure your riser height is maintained.
- Tighten all clamps to a minimum of 5 and a maximum of 8 ft lbs. of torque. Use the same torque as you would tighten a rubber no-hub coupling.
- The adapter must be adjusted upward to achieve certain extension heights. See Table 2, Table 3 or Table 3a.
- If jobsite riser height conditions change after the above steps have been completed, there may still be room for vertical adjustment in both directions. As long as minimum and maximum overlaps are maintained (see Figure 4), the adapter/riser(s) can be adjusted/cut as many times as necessary. Please follow these steps from the beginning to ensure the proper overlaps are maintained.

NOTES:

Striem Catch Basin tanks are not to be installed in any other manner except as shown. Consult local codes for separate trapping requirements, cleanout locations and additional installation instructions.

TeleGlide Riser (24 Series) Installation Guidelines
(Models CB-50-SFL, CB-125-SFL, CB-275-SFL)



CB-275-SFL
(standard)

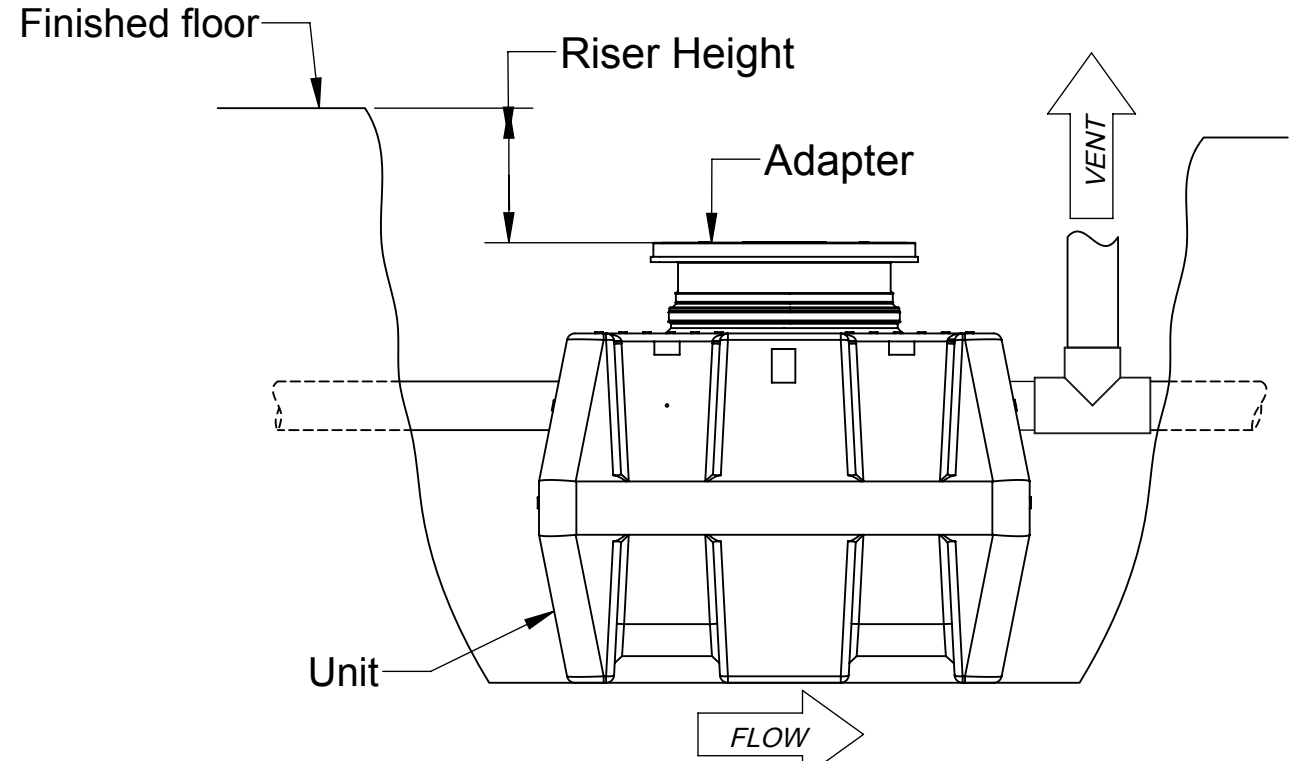
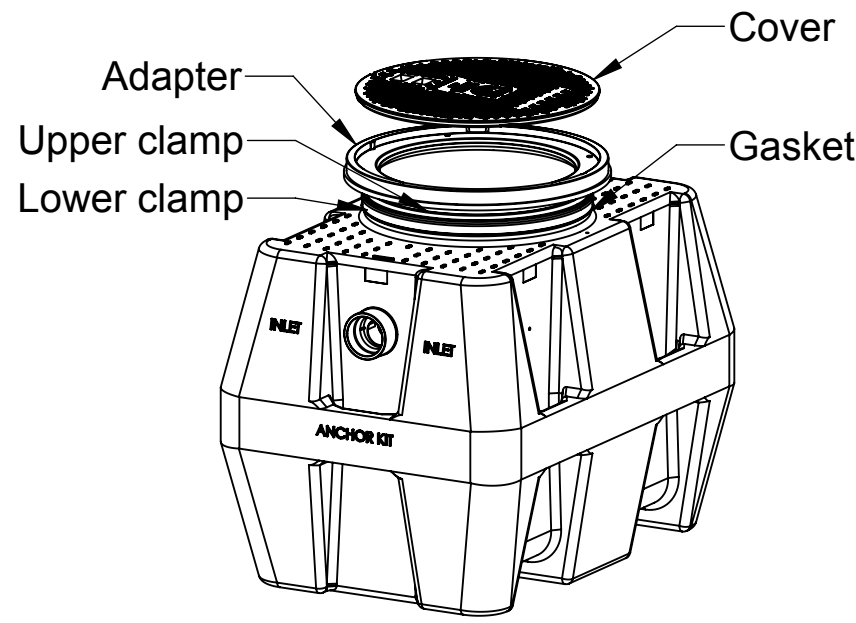


Figure 1



CB-50-SFL & CB-125-SFL
(standard)

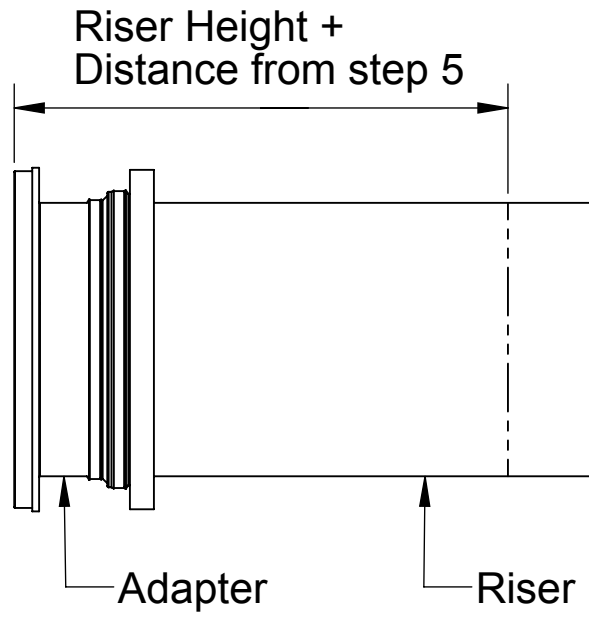
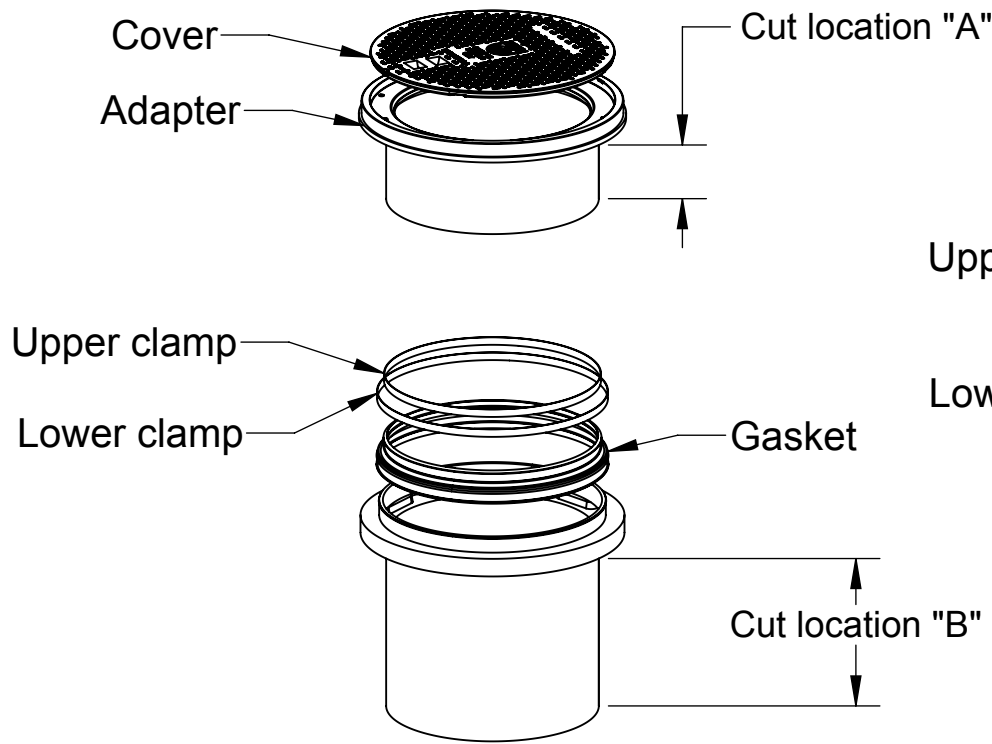
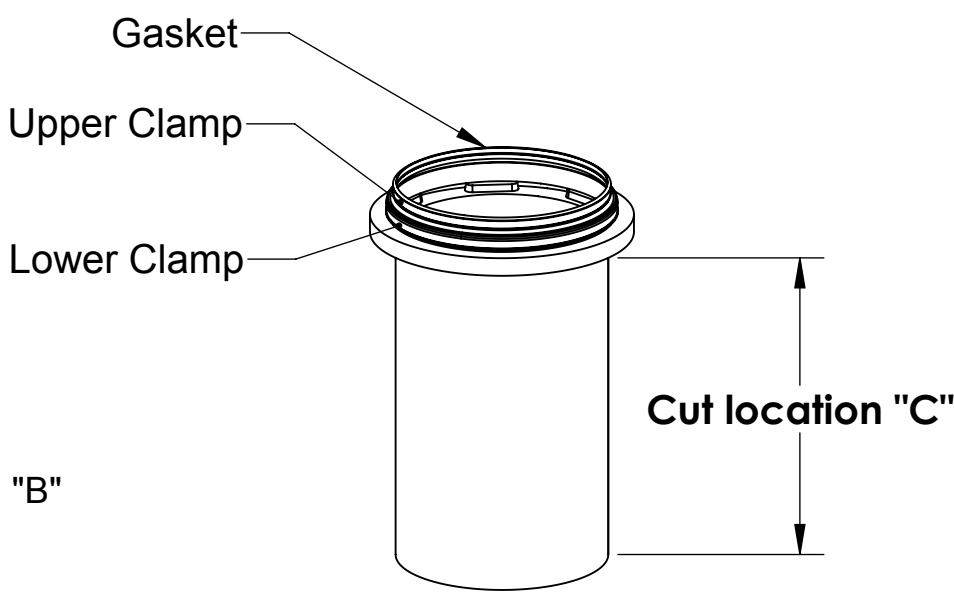


Figure 2



SR24
(short riser)
(optional component)



LR24
(long riser)
(optional component)

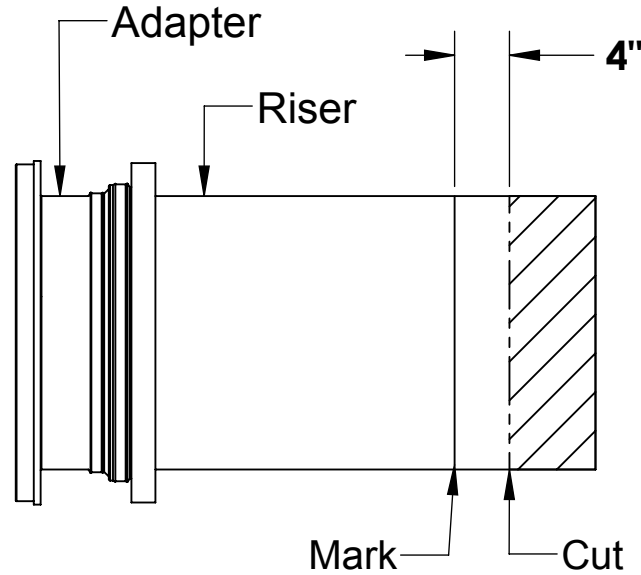


Figure 3

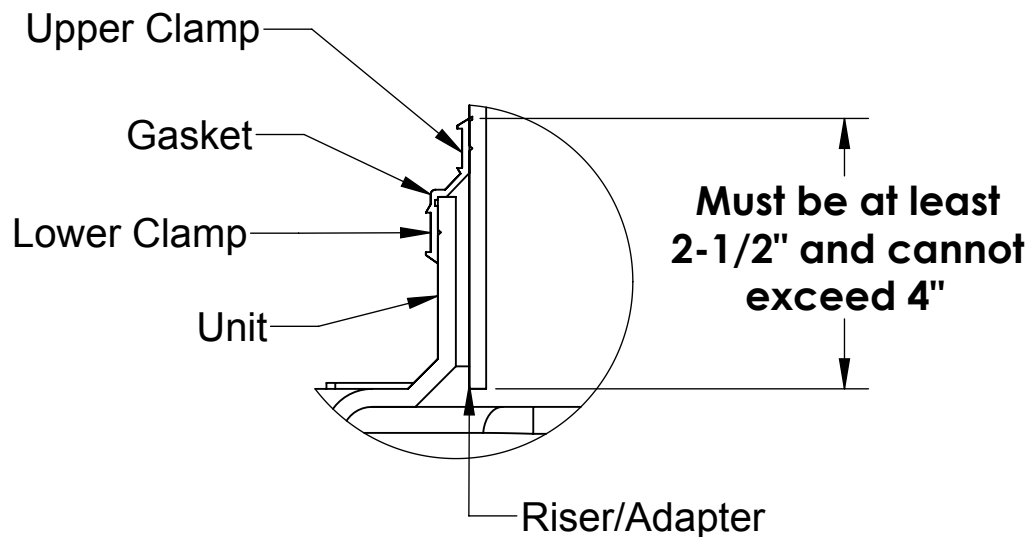


Figure 4

Table 1 TeleGlide Riser Order Guide							
CB-50-SFL			CB-125-SFL			CB-275-SFL	
Riser Height	Riser Qty.		Riser Height	Riser Qty.		Riser Height	Riser Qty.
	SR24	LR24		SR24	LR24		SR24
>3-1/2" to 22"	1	0	>6" to 24"	1	0	>6" to 24"	2
>22" to 37"	0	1	>24" to 39"	0	1	>24" to 39"	0
			>39" to 43"	2	0	>39" to 43"	4
			>43" to 58"	1	1	>43" to 58"	2
			>58" to 72"	0	2	>58" to 72"	0

Table 3 (for CB-50-SFL)			
Riser Height Needed	Riser P/N Needed	Riser Qty. Needed	Cut Location(s) (See figures above)
0" to 3-1/2"	None	0	None
>3-1/2" to 6-1/2"	SR24	1	a,b
>6-1/2" to 17"	SR24	1	b
>17" to 22"	SR24	1	None ⁵
>22" to 32"	LR24	1	c
>32" to 37"	LR24	1	None ⁶

- Adjust adapter upwards to reach 20" to 22"
- Adjust adapter upwards to reach 35" to 37"

Table 2 (for CB-125-SFL and CB-275-SFL)				
Riser Height Needed	Riser P/N Needed	Riser Qty. Needed		Cut Location(s)
		CB-125-SFL (Note 5)	CB-275-SFL	
0" to 6"	None	0	0	None
>6" to 8-1/4"	SR24	1	2	a,b
>8-1/4" to 19-3/4"	SR24	1	2	b
>19-3/4" to 24"	SR24	1	2	None ¹
>24" to 35"	LR24	1	2	c
>35" to 39"	LR24	1	2	None ²
>39" to 43"	SR24	2	4	b
>43" to 51-1/2"	SR24	1	2	c
	LR24	1	2	
>51-1/2" to 58"	SR24	1	2	None ³
>58" to 66-1/2"	LR24	2	4	c
>66-1/2" to 72"	LR24	2	4	None ⁴

- Adjust adapter upwards to reach 22" to 24"
- Adjust adapter upwards to reach 37" to 39"
- Adjust adapter upwards to reach 56" to 58"
- Adjust adapter upwards to reach 70" to 72"

Call Striem with questions or suggestions @ 1-913-222-1500 Customer Service Hours: 8AM-5PM CST

DESCRIPTION:

SOUTH FLORIDA CATCH BASIN SOLIDS
INTERCEPTORS - IOM GUIDE

SHEET NUMBER: 4 of 4

DWG BY: RS

DATE: 11/13/18

REV:

ECO:

Striem
3100 Brinkerhoff
Kansas City, KS 66115
Tel: 913-222-1500
Fax: 913-291-0457
www.striemco.com

Made in the U.S.A



PROPRIETARY AND CONFIDENTIAL

THE INFORMATION CONTAINED IN THIS DRAWING IS THE SOLE PROPERTY OF STRIEM, LLC. ANY REPRODUCTION IN PART OR AS A WHOLE WITHOUT THE WRITTEN PERMISSION OF STRIEM, LLC. IS PROHIBITED.