

FLAMMABLE LIQUID INTERCEPTORS  
(Models FLI-125, and FLI-275)

!

**WARNING**

AIR

**DO NOT AIR PRESSURE TEST UNIT!**

**DOING SO MAY RESULT IN PROPERTY DAMAGE, SERIOUS BODILY INJURY, OR DEATH!**

**REFER TO INSTALLATION INSTRUCTIONS FOR CORRECT TESTING PROCEDURE.**

Sheet Descriptions

Sheet #1 - Series overview and Warranty information  
Sheet #2 - FLI General installation guidelines and Operation/Maintenance guidelines  
Above Grade installation guidelines  
Sheet #3 - Below Grade installation guidelines  
Sheet #4 - TeleGlide Riser installation guidelines (SR24, LR24)

Leak/Seal Testing

**DO NOT AIR TEST UNIT OR TELEGLIDE RISER SYSTEM! Doing so may result in property damage, personal injury or death.**

**Base Unit:** To perform a leak/seal test on the base unit, cap/plug all plumbing connections, remove the cover, and fill the unit with water just above the highest connection. Inspect unit and connections for leaks. Check water level at specific time intervals per local code.

**TeleGlide Riser System:** If required by local code, the riser system may be leak/seal tested similar to the base unit. **CAUTION:** the riser(s) must be supported before filling with water to keep from tipping over. Once the riser system is in place and properly supported, cap/plug all plumbing connections on the main unit, remove the cover from the top of the riser assembly and fill the unit and riser system with water to finished grade level. Carefully, as the riser(s) will be very heavy from the weight of the water, inspect all gasket(s) and clamps (if applicable) for any leaks. Check the water level at specific time intervals per local code.

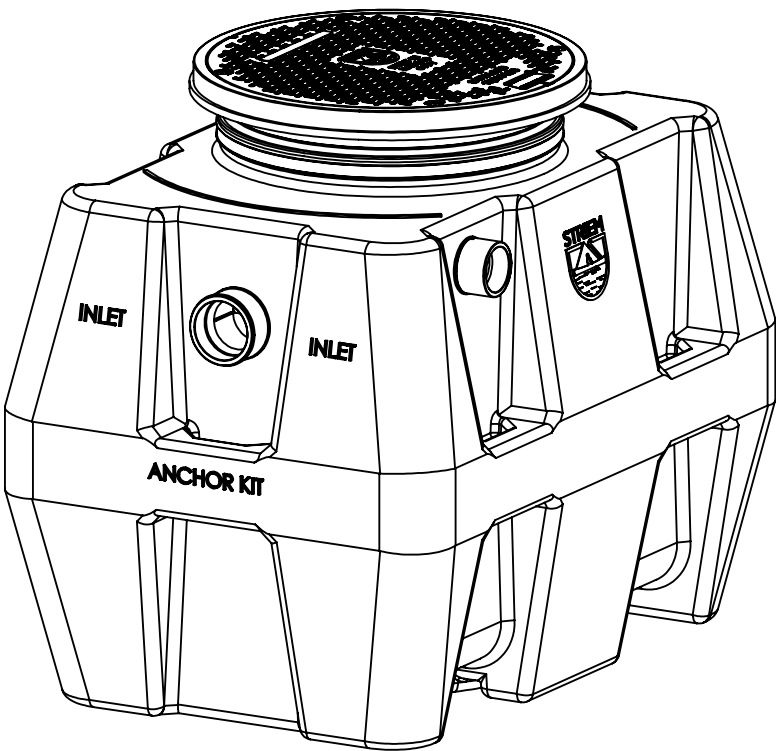
Lifetime Warranty

Effective March 2, 2015 Striem represents and warrants that polyethylene products will be free from any and all defects in material and workmanship, including corrosion, during the lifetime of the plumbing system in which the products were originally installed and will, at its option, agree to repair, replace, or supply credit to the original purchaser.

This warranty does not cover damage caused by the products’ normal usage, or wear and tear, nor does it cover damage from naturally occurring phenomenon, including, but not limited to, UV, freeze-related damage, or natural disasters. This warranty does not cover the purchaser’s cost of routine maintenance including replacement of parts required in routine maintenance.

This warranty does not cover fabricated steel products, or any monitoring equipment. This warranty shall be effective if, and only if, the products:  
\* Were installed in accordance with Striem’s notes, specifications and instructions, for installation, operation, and maintenance;  
\* Were installed in conformance with all applicable building and plumbing codes, and passed all applicable testing methods immediately following installation;  
\* Have not been subjected to misuse or abuse, whether negligent or intentional;  
\* Were never modified, repaired, or altered by any individual(s) not authorized by Striem.

This warranty is the purchaser’s sole and exclusive remedy, and acceptance of this exclusive remedy is a condition of the contract for the purchase of these products. In no event shall Striem be liable for any incidental, special, consequential or punitive damages, or for any costs, attorney fees, expenses, losses or delays claimed to be as a consequence of any damage to, failure of, or defect in any products including, but not limited to, any claims for loss of profits, transportation, removal and installation charges. This warranty is exclusive and in lieu of all other warranties or conditions, written or oral, expressed or implied.



**FLI-125**  
110 gallons  
90 flammable liquid capacity  
20.4 gallon sand capacity



**FLI-275**  
250 gallons  
141.4 flammable liquid capacity  
116.5 gallon sand capacity

NOTES:

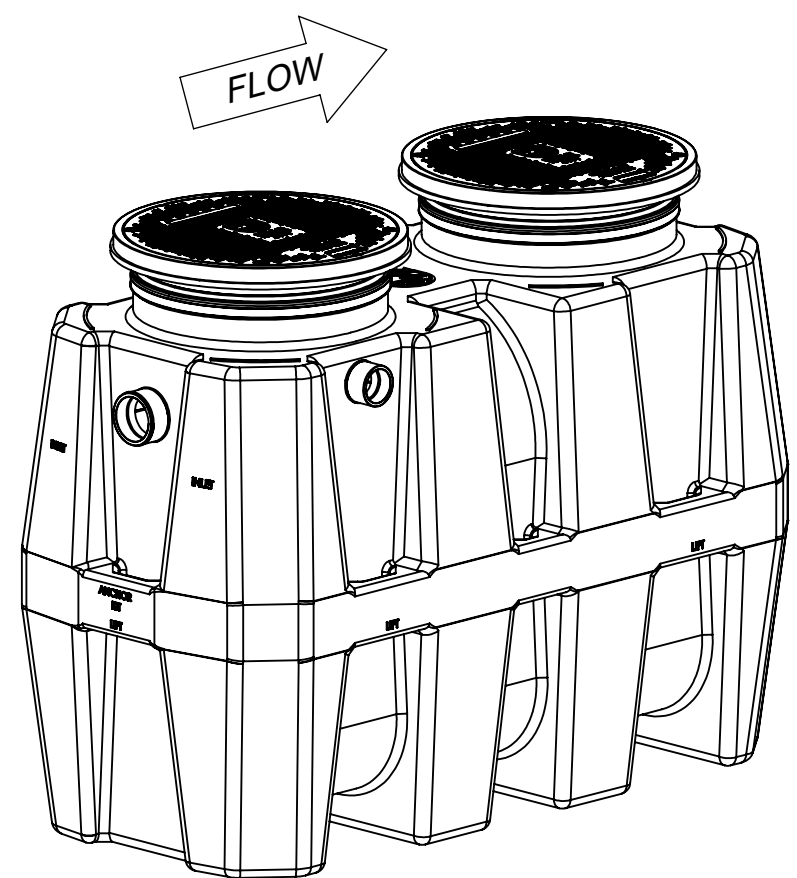
Striem flammable liquid interceptors are not to be installed in any other manner except as shown. Consult local codes for separate trapping requirements, cleanout locations and additional installation instructions.

PROPRIETARY AND CONFIDENTIAL

THE INFORMATION CONTAINED IN THIS DRAWING IS THE SOLE PROPERTY OF STRIEM, LLC. ANY REPRODUCTION IN PART OR AS A WHOLE WITHOUT THE WRITTEN PERMISSION OF STRIEM, LLC, IS PROHIBITED.

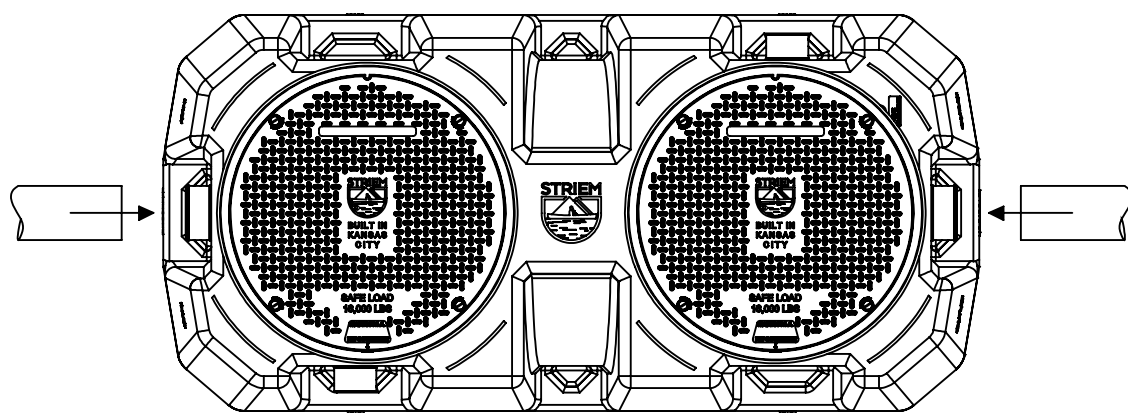
DESCRIPTION:				<div>Striem 3100 Brinkerhoff Kansas City, KS 66115 Tel: 913-222-1500 Fax: 913-291-0457 www.striemco.com</div> <div>Made in the U.S.A</div>			
FLI SERIES INSTALLATION, OPERATION AND MAINTENANCE GUIDE							
SHEET NUMBER: 1 of 4							
DWG BY: MJ	DATE: 09/24/2019	REV:	ECO:				

GENERAL INTERCEPTOR INSTALLATION INSTRUCTIONS  
(FLI-275 SHOWN)



Isometric View

Set the unit on level solid surface as close as possible to fixtures being served. If the unit is to be installed below grade, refer to below grade installation instructions. (sheet #3)



Top View

Connect inlet and outlet drainage lines to unit. Mechanically couple pipes to unit. **Do not solvent weld.**

OPERATION

Striem, LLC. Flammable Liquid Interceptors are engineered to intercept flammable liquids and other lighter-than-water contaminants from wastewater to keep them from entering the sewage system.

MAINTENANCE

- 1. For the most thorough cleaning contact a professional pumper contractor.
- 2. Wear appropriate safety equipment when cleaning. Do not smoke near separator or clean near open flame or sparks.
- 3. Remove cover(s).
- 4. Remove all contents of the interceptor including oil, sediment, and wastewater.
- 5. To access the inlet and outlet lines for cleaning as needed:  
Remove the outlet diptube (inside unit(s)) by hand loosening the green locking collar.
- 6. Clean the drain lines and diptube thoroughly of all debris before replacing diptube to original position.
- 7. Fill the unit(s) with water.
- 8. Inspect the gasket(s) for wear and tear. Replace cover(s).
- 9. Dispose of flammable liquids per local code.

PUMPING FREQUENCY:

Frequency depends on the capacity of the interceptor and the amount of flammable liquid and sediment in the wastewater.

After initial installation, it is recommended that the unit is fully pumped every 3 to 4 weeks. Monitor each pumping to establish an adequate maintenance schedule. Striem recommends pumping frequency to exceed no more than 6 months.

TROUBLESHOOTING TIPS:

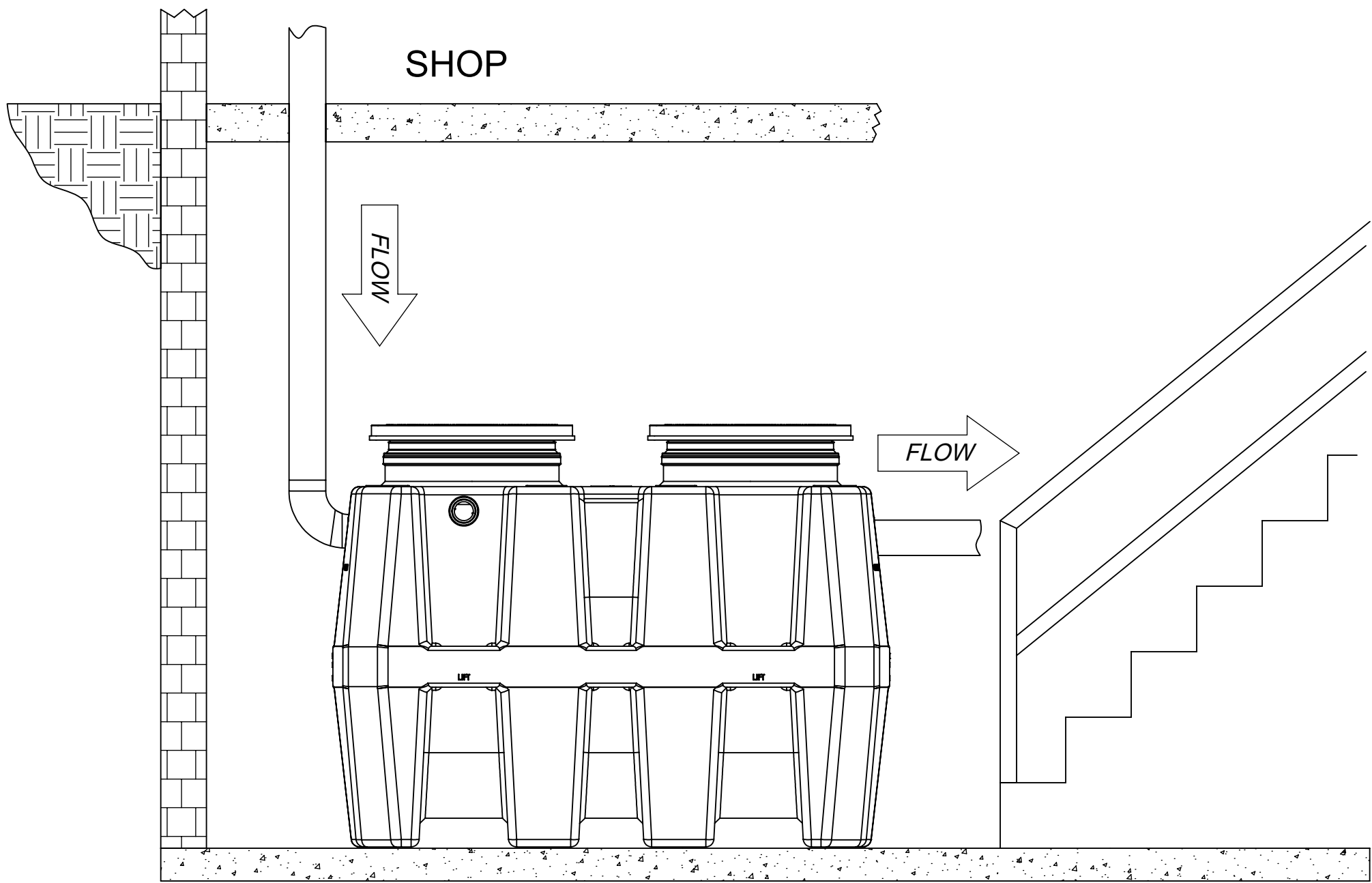
In the case of a clog, the outlet diptube may be removed for line cleaning. Slower than usual drainage may indicate the need to pump/clean the interceptor.

Always take proper care to ensure a safe and healthy environment while cleaning interceptor. For the best cleaning and maintenance service, call your local sewer and drain contractor.

NOTES:

Striem flammable liquid interceptors are not to be installed in any other manner except as shown. Consult local codes for separate trapping requirements, cleanout locations and additional installation instructions.

INTERIOR ABOVE GRADE INSTALLATION INSTRUCTIONS  
(FLI-125, FLI-275)




ON-THE-FLOOR DETAIL

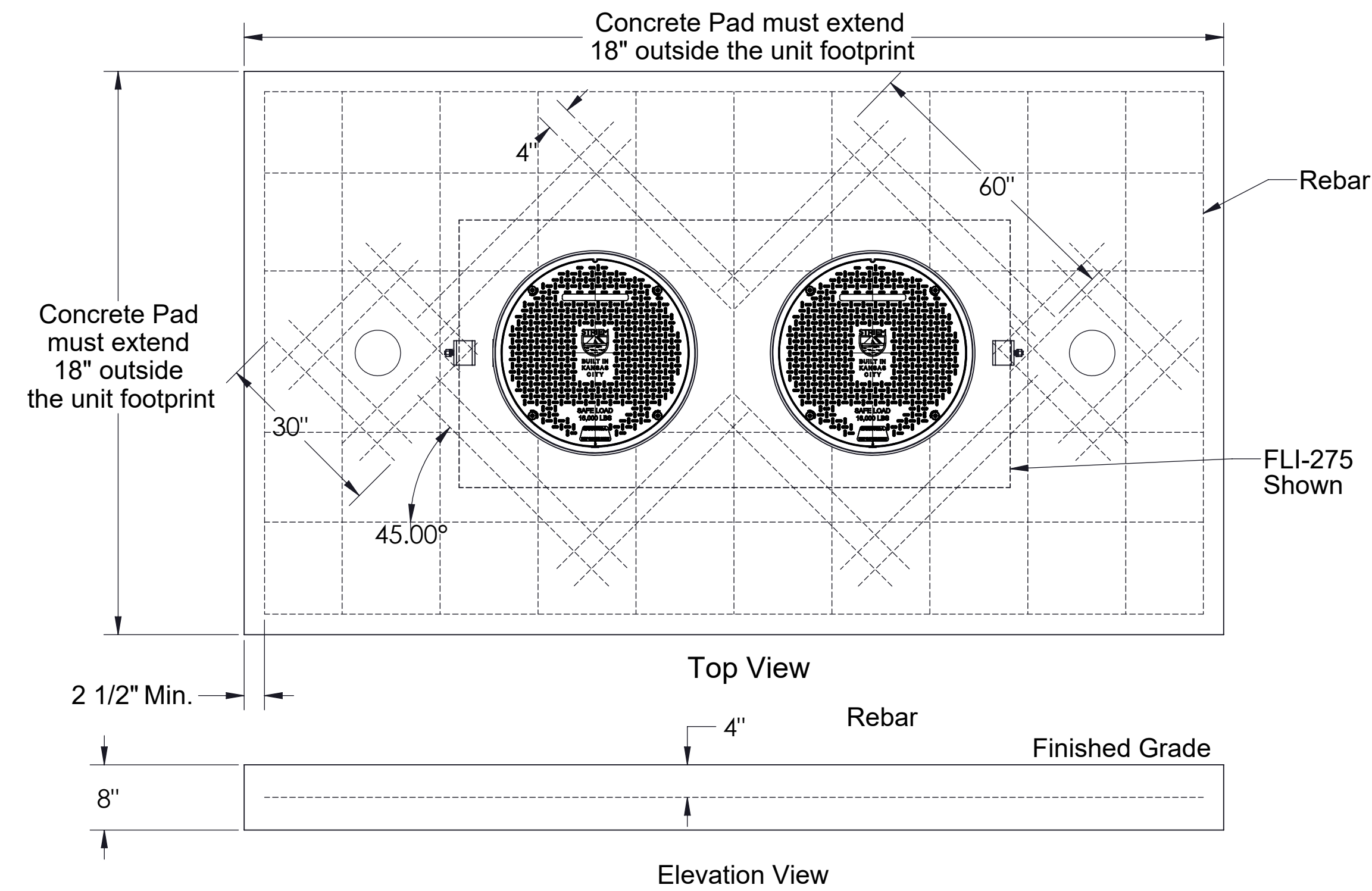
(FLI-275 SHOWN)

CONNECTIONS

- 1. Install unit(s) as close as possible to fixtures/drains being serviced.
- 2. Connect waste piping to the unit.

<b>DESCRIPTION:</b>  FLI SERIES INSTALLATION, OPERATION AND MAINTENANCE GUIDE				<div><b>Striem</b> 3100 Brinkerhoff Kansas City, KS 66115 Tel: 913-222-1500 Fax: 913-291-0457 www.striemco.com</div> <div>Made in the U.S.A</div> <div></div>
<b>SHEET NUMBER:</b> 2 of 4				
<b>DWG BY:</b> MJ	<b>DATE:</b> 09/24/2019	<b>REV:</b>	<b>ECO:</b>	

INTERIOR OR EXTERIOR BELOW GRADE INSTALLATION INSTRUCTIONS  
(FLI-125, FLI-275)



CONCRETE SLAB DETAIL FOR TRAFFIC LOADING  
(INTERIOR OR EXTERIOR)  
(FLI-275 Shown)

BELOW GRADE INSTALLATION INSTRUCTIONS

EXCAVATION

1. Install the unit(s) as close as possible to the fixtures being serviced.
2. Width and length of the excavation shall be a minimum of 12" greater than the tank on all sides.
3. Depth of the excavation shall be 6" deeper than the tank bottom.
4. Set the tank in well-packed crushed aggregate material, approximately 3/4" size rock, or sand, with no fines.
5. Anchor kit is recommended for installations in high water table conditions to prevent float out. To be determined by specifying engineer. If necessary, order optional "Anchor Kit". See detail on this sheet.

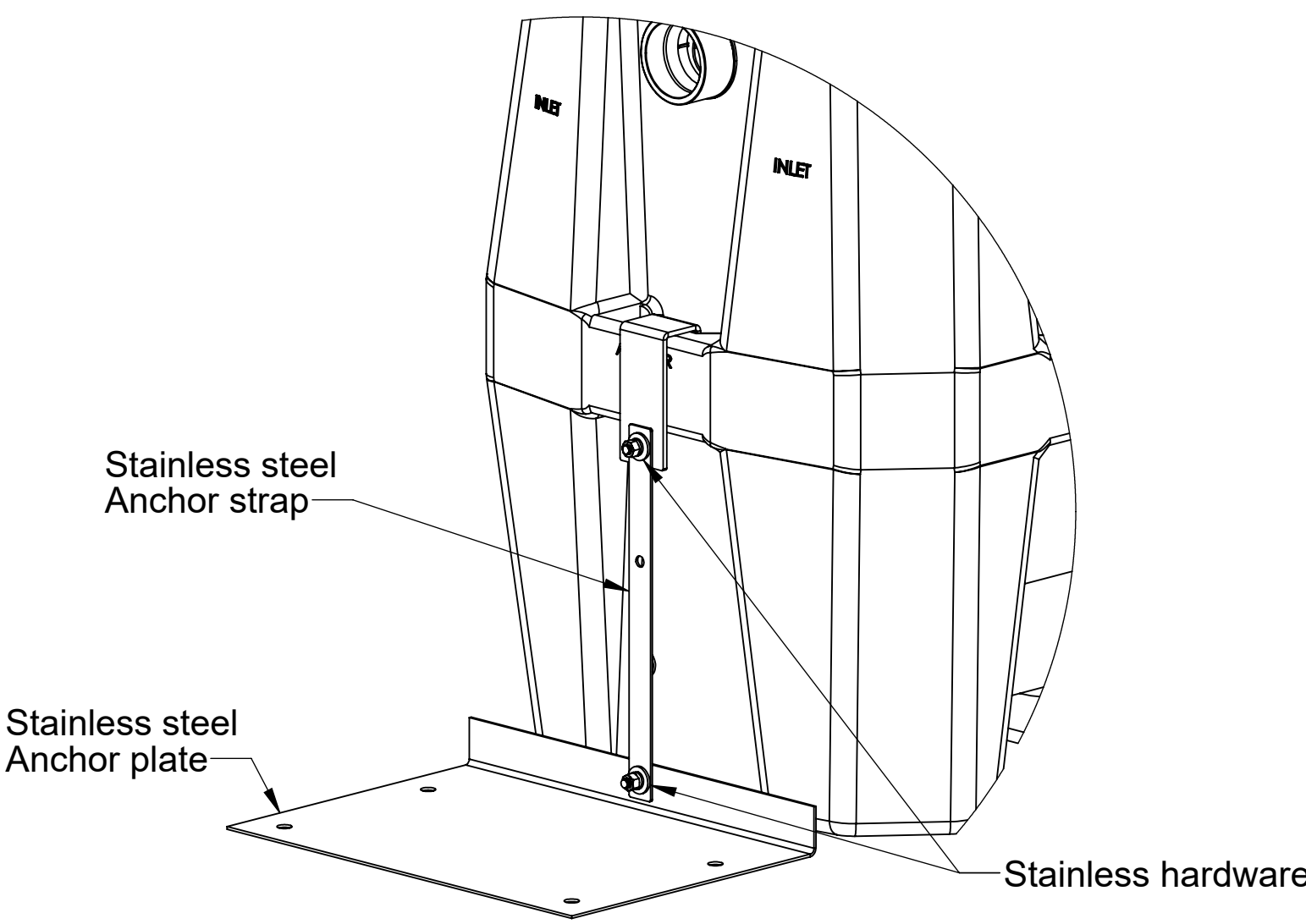
BACKFILLING & FINISHED CONCRETE SLAB

1. Preparation of sub grade per geotech recommendations.
2. Stabilize and compact sub grade to 95% proctor.
3. Fill tank with water before backfilling to prevent float out during piping installation.
4. Before backfilling and pouring of slab, secure cover(s) and riser(s) (if necessary) to the unit(s)
5. Backfill using crushed aggregate material approximately 3/4" size rock, or sand, with no fines.
6. Place 6" aggregate base under slab. Aggregate should be 3/4" size rock, or sand, with no fines.
7. Thickness of concrete around cover to be determined by specifying engineer. If traffic loading is required the concrete slab dimensions shown are for guideline purposes only.
8. Concrete to be 28 day compressive strength to 4000 PSI.
9. NO. 4 rebar ( $\phi$  1/2") grade 60 steel per ASTM A615: connected with tie wire.
10. Rebar to be 2 1/2" from edge of concrete.
11. Rebar spacing 12" grid. 4" spacing around access openings.
12. All pipe penetrations to be sleeved or have slip connections.

CONNECTIONS

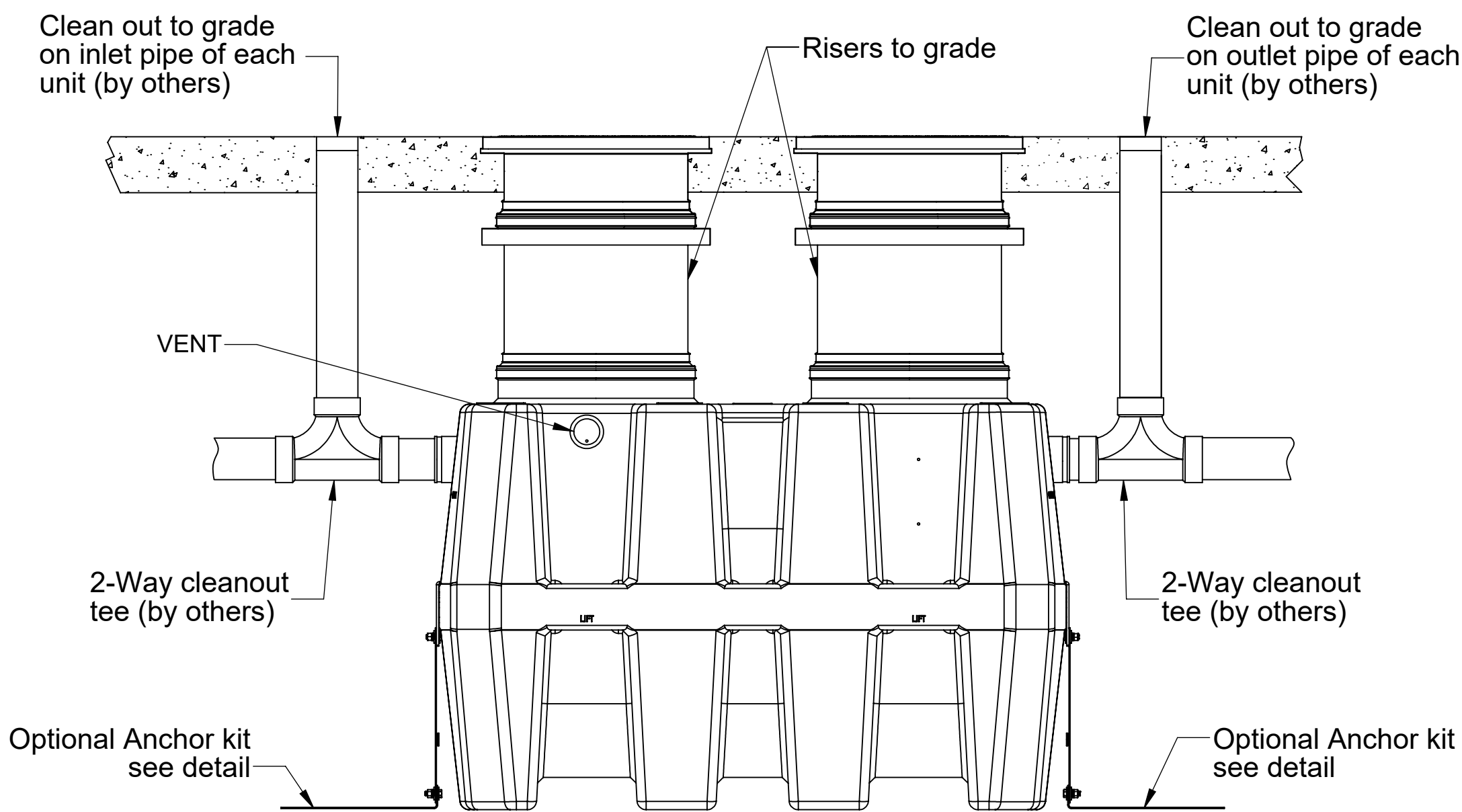
1. Connect waste piping to the unit.
2. Connect vent piping to vent connection on sidewall of tank per local code.

ANCHOR KIT INSTALLATION DETAIL



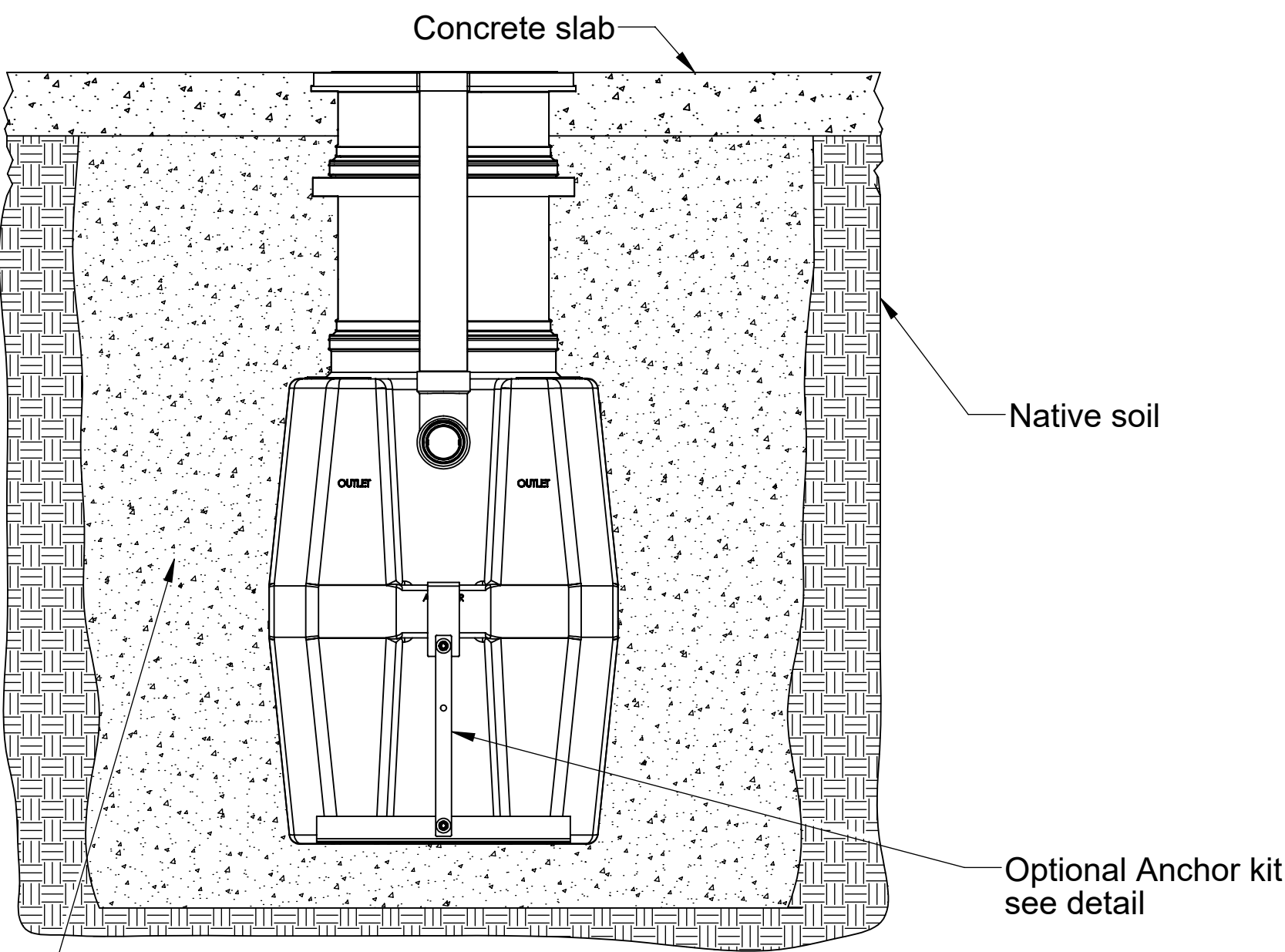
Anchor Kit Installation Steps

1. Slide "Anchor Strap" over tie down point on end wall and bolt together using provided hardware.
2. Bolt "Anchor Strap" to "Anchor Plate" using provided hardware
3. Hold down force achieved by backfill weight acting on Anchor Plate.
4. Anchor Plate may be bolted to concrete slab, if required, by using holes provided in Anchor Plate.



SIDE VIEW DETAIL

For unit details see specification sheet for selected unit  
(Connecting pipe and fittings by others)



EXCAVATION AND BACKFILL DETAIL  
(INTERIOR OR EXTERIOR)

NOTES:

Striem flammable liquid interceptors are not to be installed in any other manner except as shown. Consult local codes for separate trapping requirements, cleanout locations and additional installation instructions.

DESCRIPTION:

FLI SERIES INSTALLATION, OPERATION  
AND MAINTENANCE GUIDE

SHEET NUMBER: 3 of 4

DWG BY: MJ

DATE: 09/24/2019

REV:

ECO:

Striem  
3100 Brinkerhoff  
Kansas City, KS 66115  
Tel: 913-222-1500  
Fax: 913-291-0457  
www.striemco.com

Made in the U.S.A



PROPRIETARY AND CONFIDENTIAL  
THE INFORMATION CONTAINED IN THIS DRAWING IS THE SOLE PROPERTY OF STRIEM, LLC.  
ANY REPRODUCTION IN PART OR AS A WHOLE WITHOUT THE WRITTEN PERMISSION OF STRIEM, LLC. IS  
PROHIBITED.

Tools included (with base flammable liquid interceptor unit(s))

- 7/16" Nut driver tool/bit
- Silver permanent marker

Tools Needed:

- Tape measure
- Regular or cordless drill with 1/2" chuck

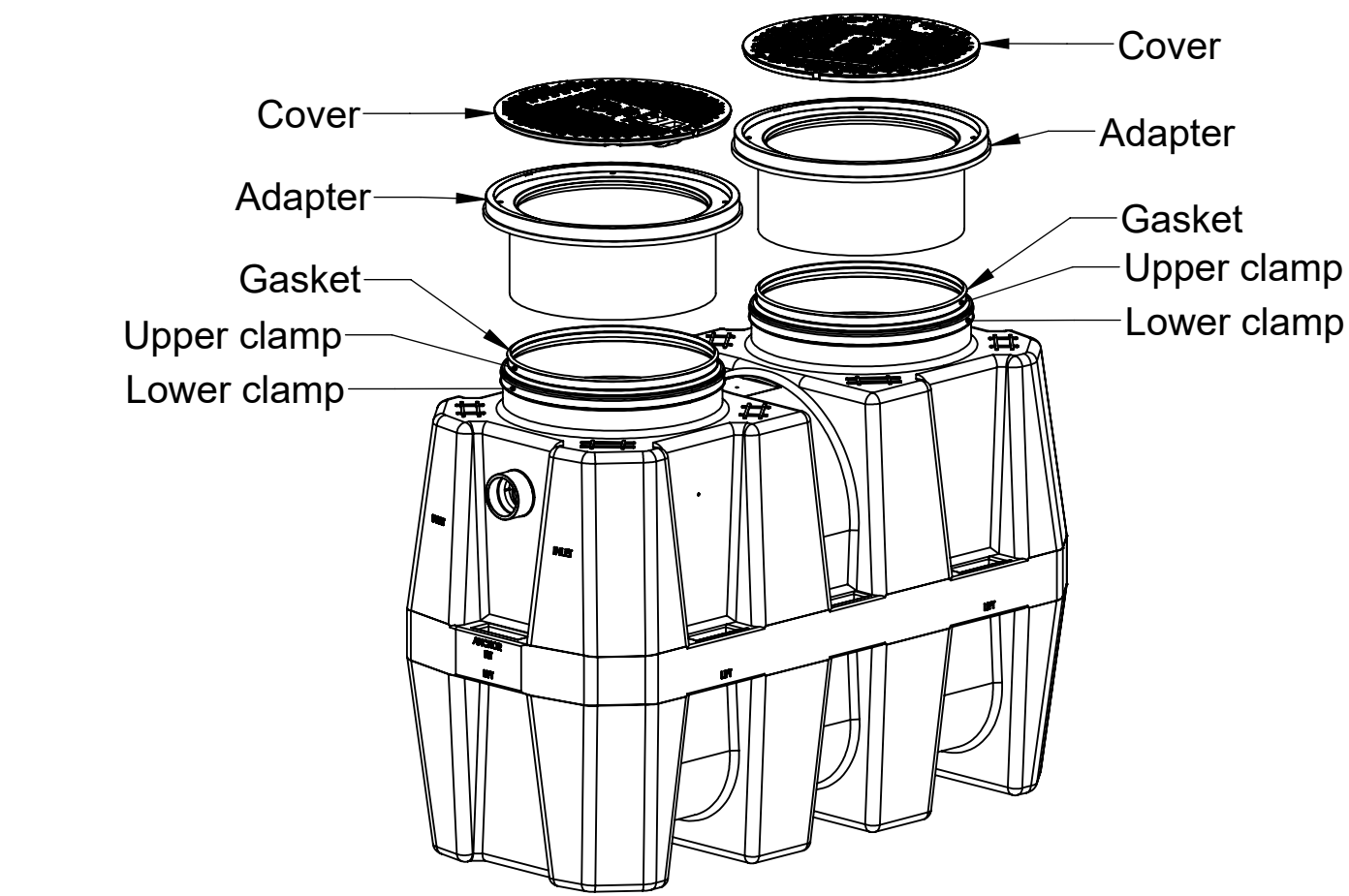
Tools needed if Riser(s) require cutting:

- Jigsaw or
- Cordless circular saw or
- Reciprocating saw

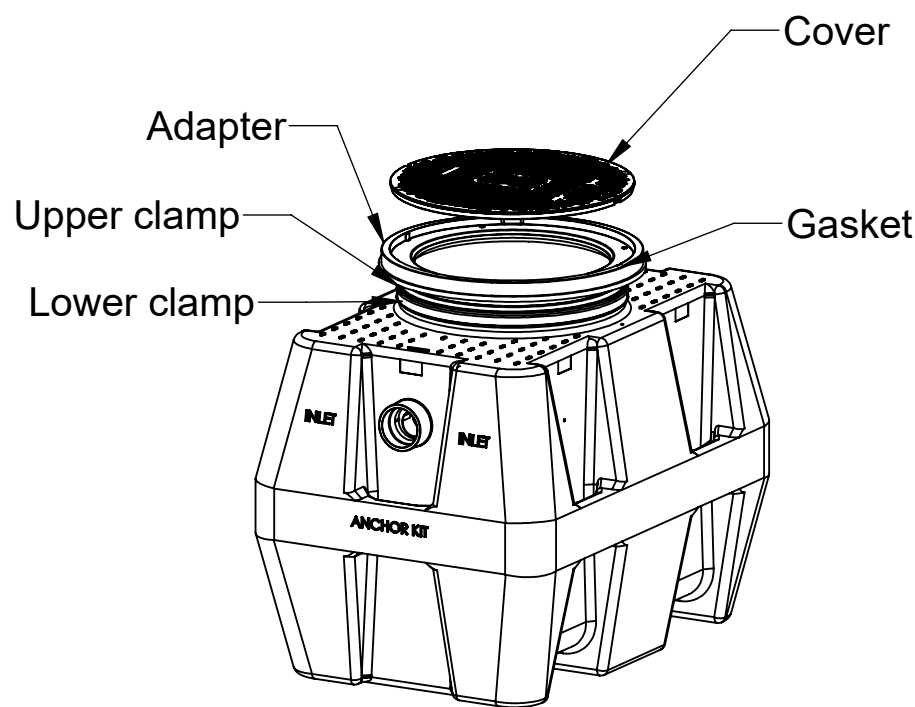
Riser Assembly Instructions/Steps:

1. If the unit is to be installed on grade (on-the-floor), there is no need for any adjustments. The unit is ready to be put into service.
2. If the unit is to be buried: Once the unit is set so that the pipe connections line up with the jobsite piping, measure the total riser height needed from the top of the cover to finished grade. Make sure you include any future tile work, etc. that may be installed in your finished grade measurements. See figure 1.
3. Select the according riser(s) needed based off Table 1.
4. If riser(s) are needed, remove the cover(s) from the adapter and remove the adapter from the main unit by loosening the upper clamp with the included nut driver bit (lower band is factory set, do not adjust or remove). On the floor near the unit, insert the adapter into the first riser until it stops. If needed, insert the bottom of the first riser into the top of the second riser until it stops. You may need to tighten the upper clamps during this step to keep the risers from shifting. Adapter and riser(s) should sit level with each other. Removal of the cover during this process will ease assembly.
5. From the top of the adapter, measure your needed total riser height downward to the sidewall of the riser. Then, add 6". For example, if you have a FLI-125 and need a 15-1/2" extension, you would measure down from the top of the adapter 21-1/2" (15-1/2" + 6" = 21-1/2"). See Figure 2.
6. Refer to Table 2 to determine if, and where, any cuts need to be made. If a cut needs to be made, make a circular line around the sidewall of the riser with the included silver marker at your riser height + dimension from step 5. Using a jigsaw, circular saw or reciprocating saw, cut along your line. Discard/recycle the cutoff scrap.
7. Whether the riser needs to be cut or not, make another mark with the silver marker on the sidewall of the riser a distance of 4 INCHES above the edge just cut. If you did not make a cut (meaning your riser height + dimension from step 5 line was beyond the bottom edge of your riser), still mark the sidewall of the riser 4 INCHES above where your riser height + dimension from step 5 line would have been. DO NOT cut this new line. Once the riser is installed into the main unit, this new line will end up at the top of the gasket and will aid in re-assembly. See Figure 3.
8. IMPORTANT: Before the next step: Make sure diffuser is installed inside the main unit at the appropriate location.
9. Refer to sheet 1 of the installation instructions for leak/water testing procedures.
10. Take riser(s) and adapters apart to reduce the weight during installation. Wipe all sidewalls and inside of gasket with a damp cloth to remove jobsite dust/debris. Install components into the main unit starting from the lowest (cut) riser and working your way toward the finished floor level. Upper clamps at each gasket need to be loosened or removed to aid in assembly. Once riser(s)/adapter is inserted into gasket, upper clamp can be tightened.
11. Verify that the bottom of the lowest riser is protruding at least 2-1/2" but no more than 4" into the main unit from the top of the gasket. Your mark from step 7 should be at the top edge of the gasket on the main unit. If measurements were made correctly, this should happen automatically. See figure 4.
12. If tilting of the adapter is required to be flush with finished grade, it must be done AFTER all clamps have been tightened with riser(s)/adaptor in a vertical and level position. Tilting is achieved by using the flexibility of the gasket. If tilting is done before clamps are tightened, a perfect gasket seal may be compromised. Striem recommends tilting only the adapter versus the entire riser assembly to make sure your riser height is maintained.
13. Tighten all clamps to a minimum of 5 and a maximum of 8 ft lbs. of torque. Use the same torque as you would tighten a rubber no-hub coupling.
14. The adapter must be adjusted upward to achieve certain extension heights. See Table 2.
15. If jobsite riser height conditions change after the above steps have been completed, there may still be room for vertical adjustment in both directions. As long as minimum and maximum overlaps are maintained (see Figure 4), the adapter/riser(s) can be adjusted/cut as many times as necessary. Please follow these steps from the beginning to ensure the proper overlaps are maintained.

TeleGlide Riser (24 Series) Installation Guidelines (FLI-125, FLI-275)



FLI-275



FLI-125

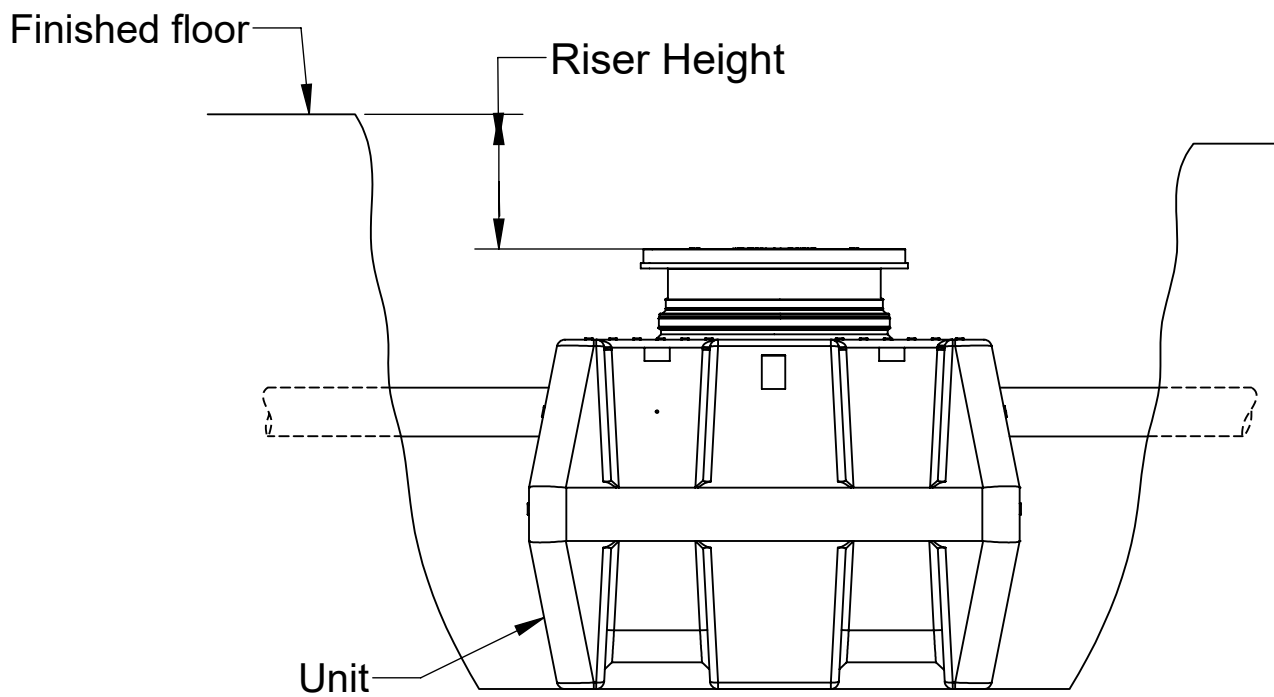


Figure 1

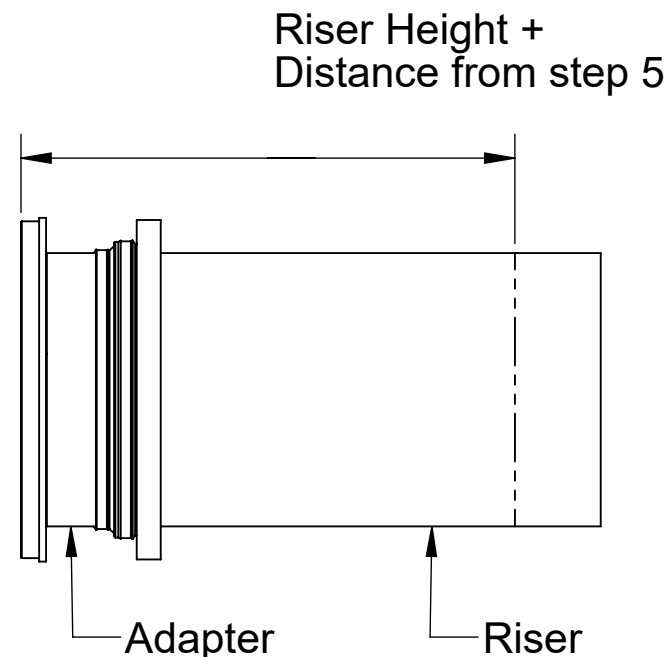


Figure 2

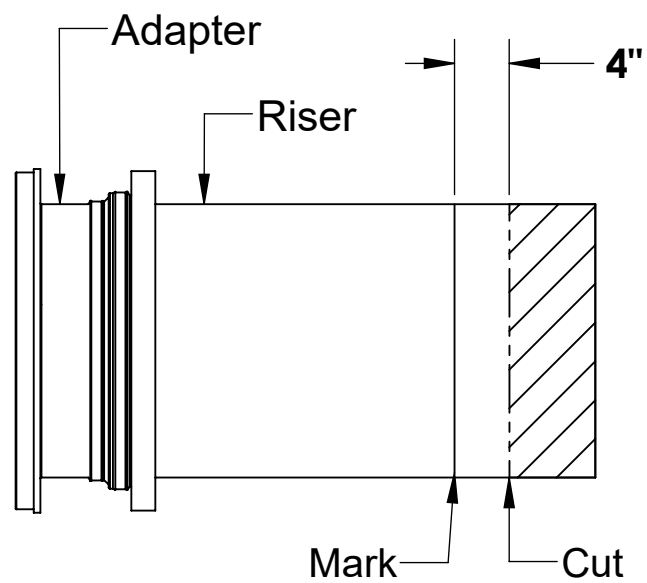


Figure 3

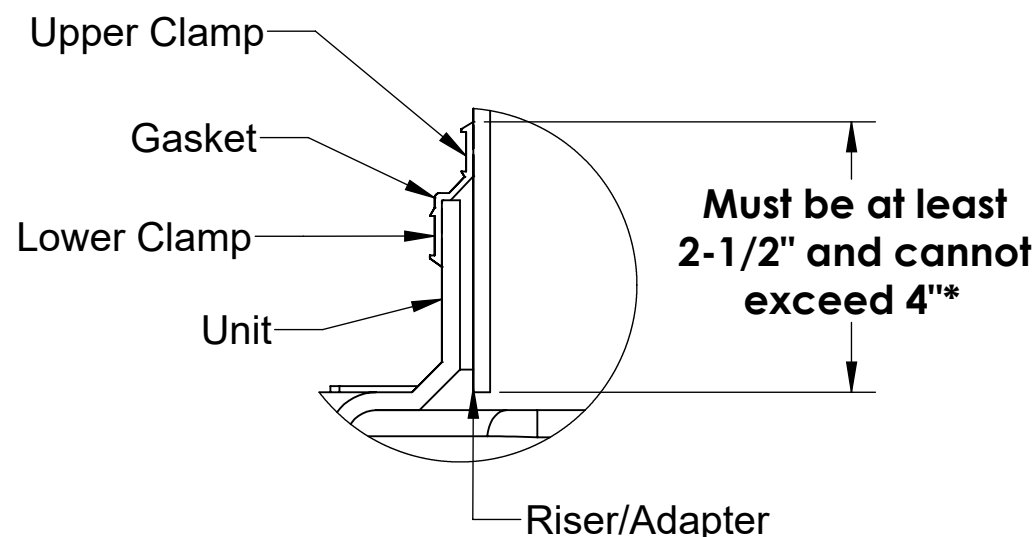


Figure 4

\*3" for a GB-35 with 4" connections

Table 1 TeleGlide Riser Order Guide					
FLI-125			FLI-275		
Riser Height	Riser Qty.		Riser Height	Riser Qty.	
	SR24	LR24		SR24	LR24
>6" to 24"	1	0	>6" to 24"	2	0
>24" to 39"	0	1	>24" to 39"	0	2
>39" to 43"	2	0	>39" to 43"	4	0
>43" to 58"	1	1	>43" to 58"	2	2
>58" to 72"	0	2	>58" to 72"	0	4

5. Adjust adapter upwards to reach 20" to 22"
6. Adjust adapter upwards to reach 35" to 37"

Table 2 (for FLI-125 and FLI-275)				
Riser Height Needed	Riser P/N Needed	Riser Qty. Needed		Cut Location(s)
		FLI-125	FLI-275	
0" to 6"	None	0	0	None <sup>5</sup>
>6" to 8-1/4"	SR24	1	2	a,b
>8-1/4" to 19-3/4"	SR24	1	2	b
>19-3/4" to 24"	SR24	1	2	None <sup>1</sup>
>24" to 35"	LR24	1	2	c
>35" to 39"	LR24	1	2	None <sup>2</sup>
>39" to 43"	SR24	2	4	b
>43" to 51-1/2"	SR24	1	2	c
	LR24	1	2	
>51-1/2" to 58"	SR24	1	2	None <sup>3</sup>
	LR24	1	2	
>58" to 66-1/2"	LR24	2	4	c
>66-1/2" to 72"	LR24	2	4	None <sup>4</sup>

1. Adjust adapter upwards to reach 22" to 24"
2. Adjust adapter upwards to reach 37" to 39"
3. Adjust adapter upwards to reach 56" to 58"
4. Adjust adapter upwards to reach 70" to 72"

Call Striem with questions or suggestions @ 1-913-222-1500 Customer Service Hours: 8AM-5PM CST

NOTES:

Striem flammable liquid interceptors are not to be installed in any other manner except as shown. Consult local codes for separate trapping requirements, cleanout locations and additional installation instructions.

DESCRIPTION:

FLI SERIES INSTALLATION, OPERATION AND MAINTENANCE GUIDE

SHEET NUMBER: 4 of 4

DWG BY: MJ

DATE: 09/24/2019

REV:

ECO:

Striem  
3100 Brinkerhoff  
Kansas City, KS 66115  
Tel: 913-222-1500  
Fax: 913-291-0457  
www.striemco.com

Made in the U.S.A



PROPRIETARY AND CONFIDENTIAL

THE INFORMATION CONTAINED IN THIS DRAWING IS THE SOLE PROPERTY OF STRIEM, LLC. ANY REPRODUCTION IN PART OR AS A WHOLE WITHOUT THE WRITTEN PERMISSION OF STRIEM, LLC, IS PROHIBITED.