

SPECIFICATIONS

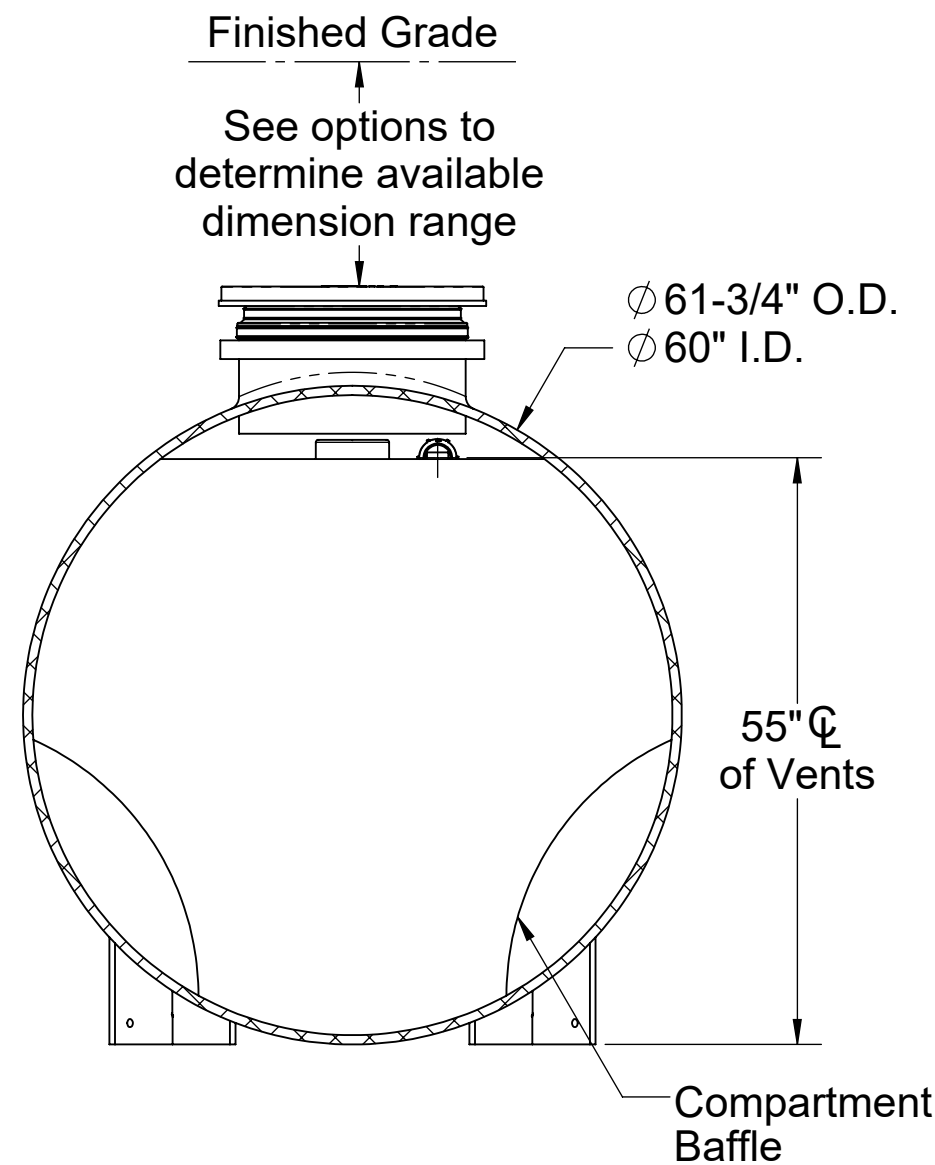
- 1. 6" Plain End inlet/outlet shown, 3" Plain End vents standard.
- 2. Max flow rate: 314 GPM.
- 3. Liquid capacity: 1000 gallons (133 cu. ft.).
- 4. Oil capacity: 370 gallons.
- 5. Solids capacity: 477 gallons.
- 6. Unit weight: 1324 lbs.
- 7. Maximum operating temperature 140°F continuous.

NOTES

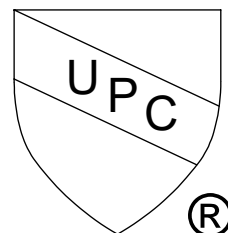
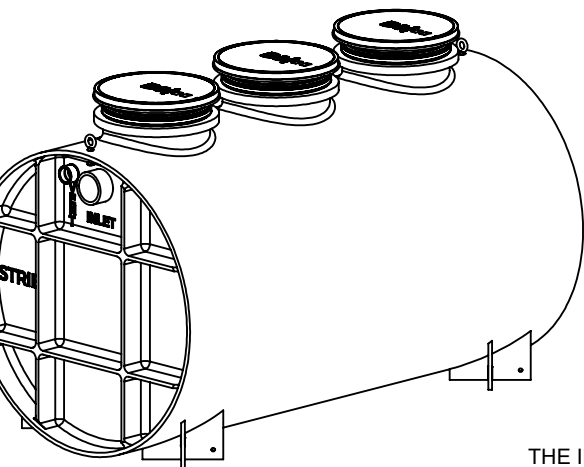
- 1. For gravity drainage applications only.
- 2. Do not use for pressure applications.
- 3. Cover placement allows full access to tank for proper maintenance.
- 4. Lifting lug set for easy install.

ENGINEER SPECIFICATION GUIDE

Striem oil separator model OT-1000 shall be lifetime guaranteed and made in the USA. Separator shall be constructed of polyethylene with 7/8" nominal wall thickness. Separator shall be manufactured for below-grade installation. Field-adjustable riser system is available as an option to bring manhole covers to grade. Separator flow rate shall be 314 GPM. Separator liquid holding capacity shall be 1000 gallons and oil capacity shall be 370 gallons. Solids capacity shall be 477 gallons. Covers shall be H20 rated pickable cast iron. Separator shall be certified to IAPMO IGC 183-2016 and carry a UPC listing.

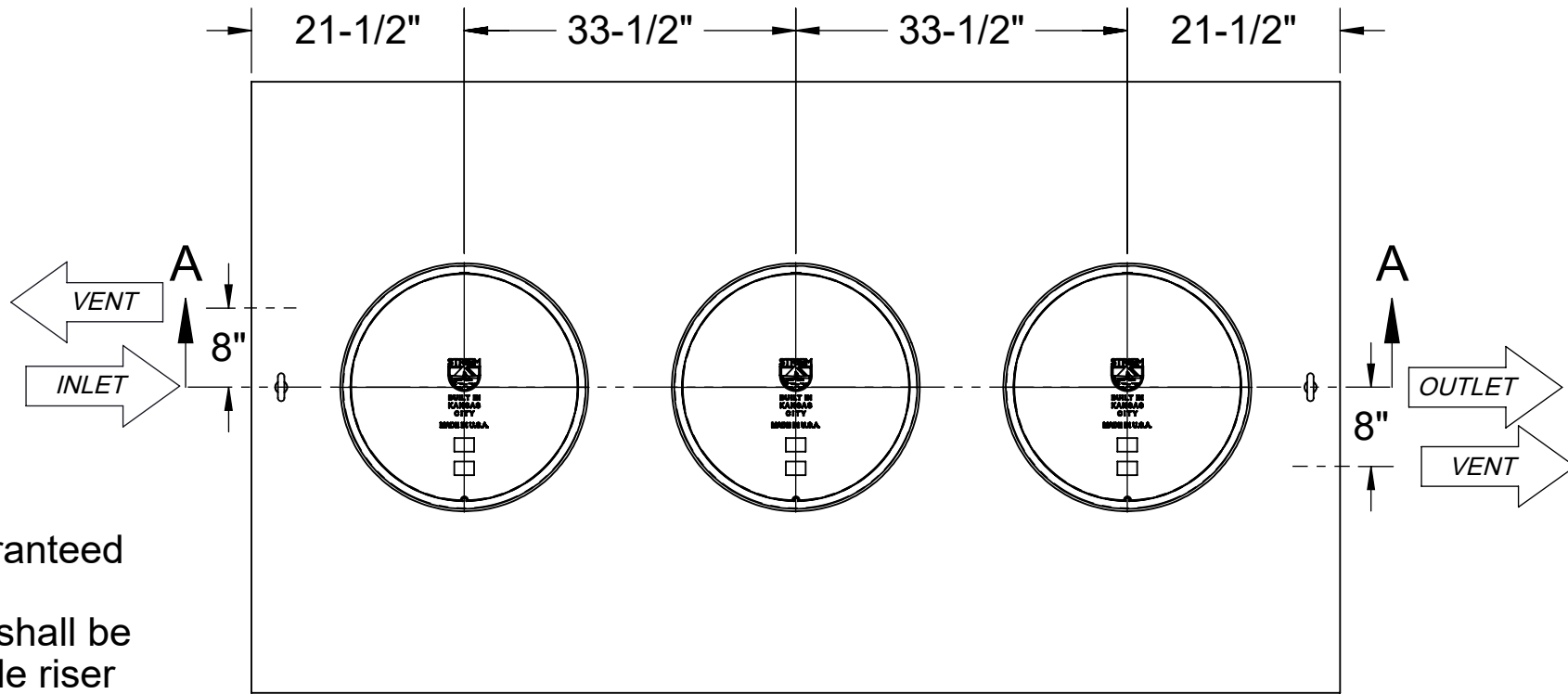


SECTION B-B

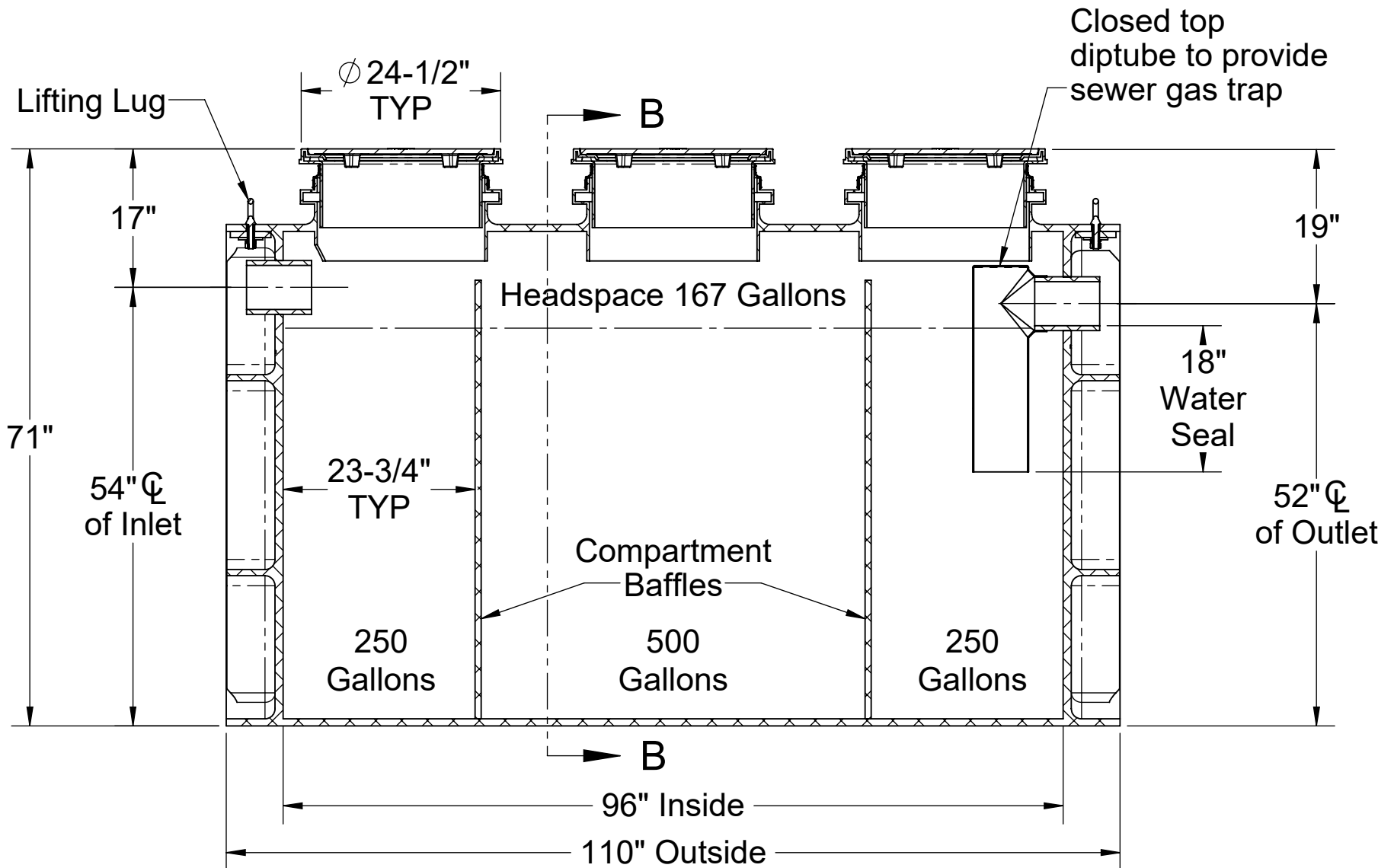


PO IS NON-CANCELABLE
ORDER IS NON-RETURNABLE

PROPRIETARY AND CONFIDENTIAL
THE INFORMATION CONTAINED IN THIS DRAWING IS THE SOLE PROPERTY OF STRIEM, LLC.
ANY REPRODUCTION IN PART OR AS A WHOLE WITHOUT THE WRITTEN PERMISSION OF STRIEM, LLC. IS PROHIBITED.



TOP VIEW



SECTION A-A

OPTIONS

Connection Options (Plain End Only)

Inlet / Outlet

- ☐ 4"
- ☐ 6"
- ☐ 8"

SELECTION
REQUIRED

Riser Options

From Factory: Up to 5"

- ☐ Up to 24": SR24 (3)
- ☐ Up to 39": LR24 (3)
- ☐ Up to 43": SR24 (6)
- ☐ Up to 58": SR24 (3) + LR24 (3)
- ☐ Up to 72": LR24 (6)
- ☐ Up to 90": SR24 (3) + LR24 (6)
- ☐ Up to 106": LR24 (9)

- OR -

- ☐ CPRK (3): 11" - 106" (See specification for more detail.)

Additional Options

- ☐ HDK-5: High Water Table Hold Down Kit
- ☐ SS: Slick Stick™ Oil Level Monitoring System*
- ☐ CS3: Clean Sweep™ Coalescing Media**

*Monitoring system will raise covers by 3".

**Clean Sweep Coalescing Media not compatible with CPRK

MODEL NUMBER: OT-1000

DESCRIPTION:

OIL TANKER™
POLYETHYLENE OIL SEPARATOR
1000 GALLON CAPACITY

DWG BY: ENG

DATE: 7/25/2023

REV: 1

SPECIFICATION SHEET

Striem
Kansas City, KS
Tel: 913-222-1500
orders@striemco.com
www.striemco.com

Made in the U.S.A

