

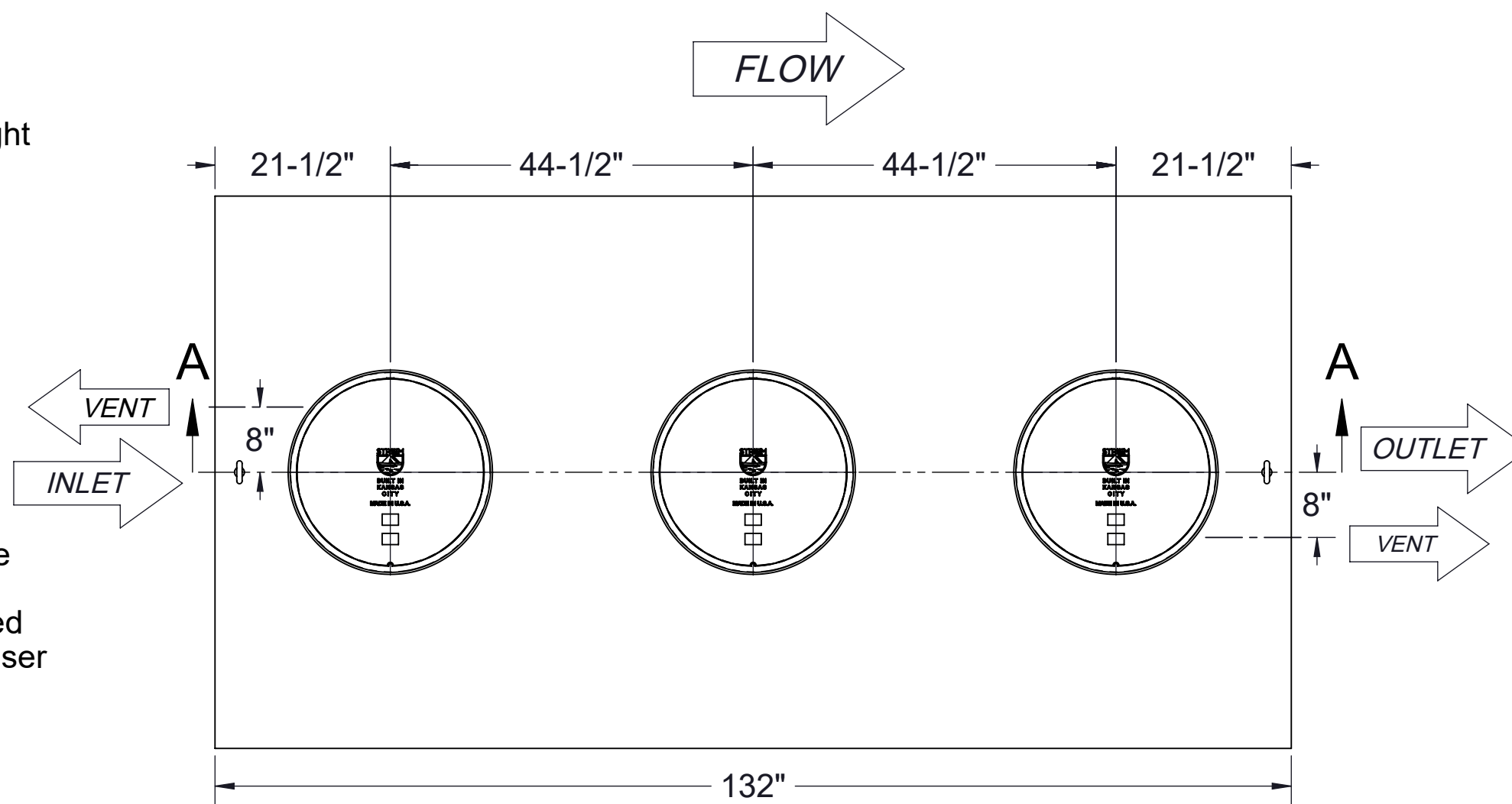
SPECIFICATIONS

1. 3" Plain end vents standard.
2. Max flow rate: 314 GPM
3. Max flow rate to achieve 5 ppm of residual light liquid in effluent: 45 GPM
4. Liquid capacity: 1500 Gallons (201 cu. ft.)
5. Oil capacity: 488 Gallons
6. Solids/sediment capacity: 413 Gallons
7. Unit weight: 1776 lbs.
8. H20 rated cast iron covers.
9. Maximum operating temperature 140°F continuous.
10. For buried applications only.

ENGINEER SPECIFICATION GUIDE

Striem Oil Tanker™ model OT-1500-CS3 shall be lifetime guaranteed and made in USA of High Density Polyethylene. Separator shall be furnished for below grade installation with field adjustable riser system. Separator flow rate shall be 314 GPM. Separator oil capacity shall be 488 gallons. Sand capacity shall be 413 gallons. Separator shall be certified to IAPMO IGC 183-2016.

Clean Sweep™ polypropylene coalescing media has been third party tested to performance standard CEN EN858-1 for class 1 coalescing separators.



TOP VIEW

Directions: Choose connections, select options, sign and submit with purchase order.

Connections

Inlet / Outlet

- Plain End
- Male Thread

Size

- 4"
- 6"
- 8" (Plain End Only)

Riser Options

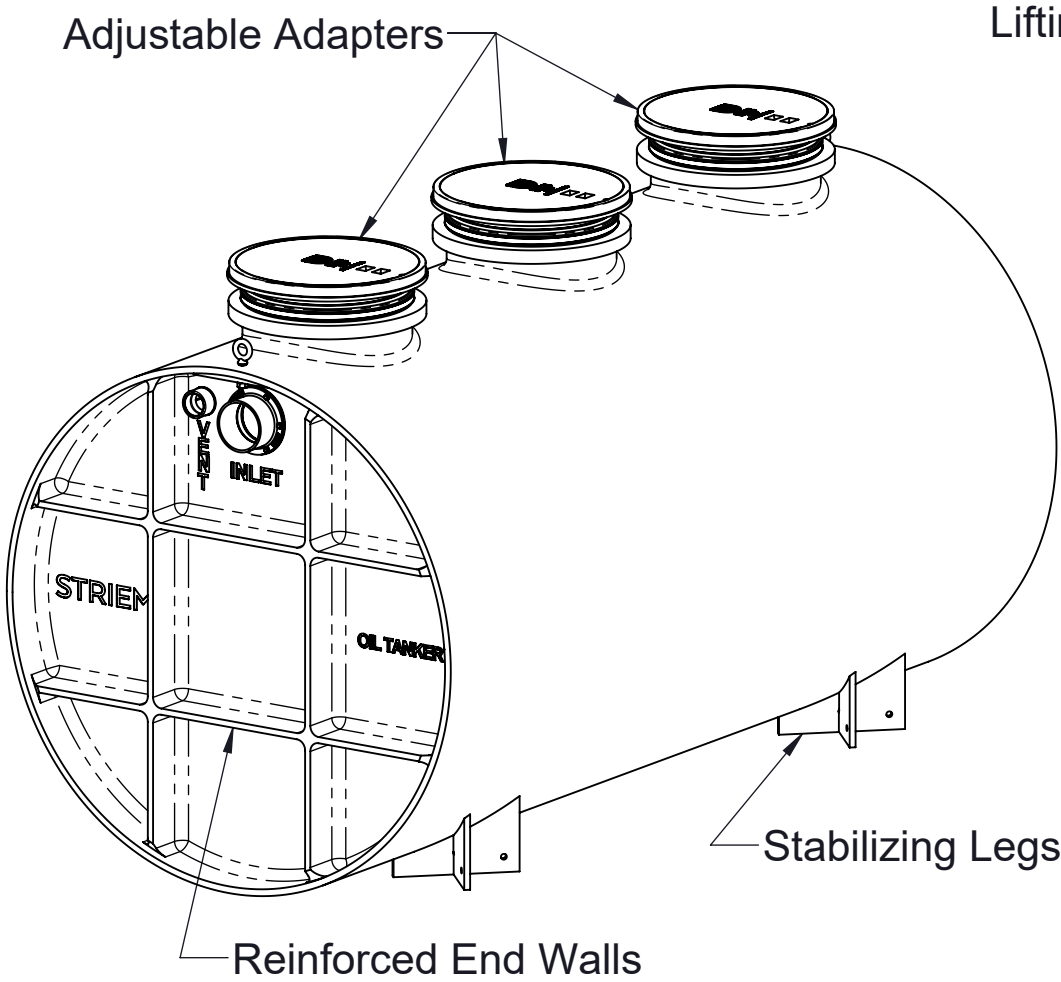
Included : 0" - 5"

- SR24 (3) : >5" - 24"
- LR24 (3) : >24" - 39"
- SR24 (6) : >39" - 43"
- SR24 (3) + LR24 (3) : >43" - 58"
- LR24 (6) : >58" - 72"
- SR24 (3) + LR24 (6) : >72" - 90"
- LR24 (9) : >90" - 106"

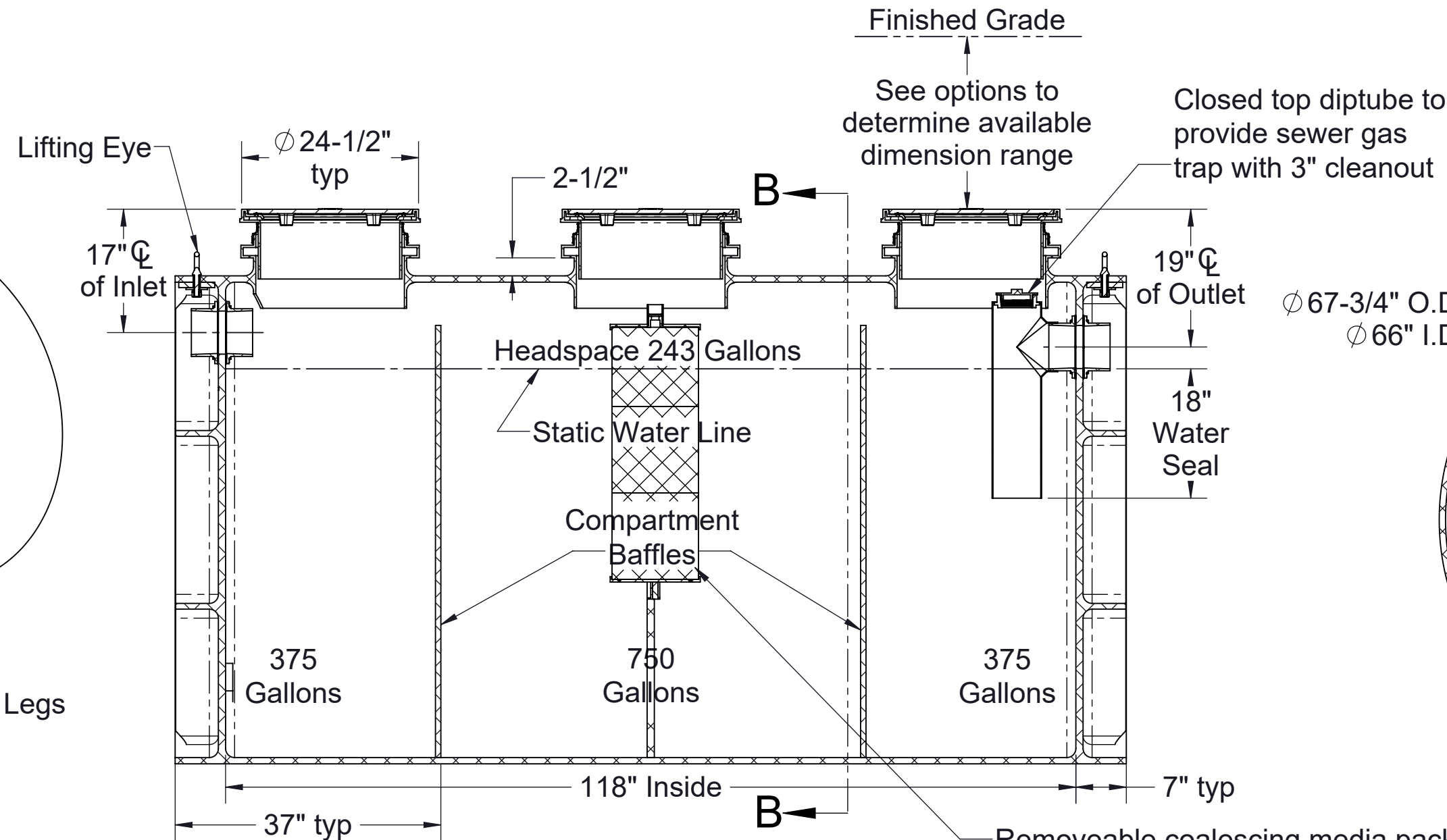
Additional Options

- HDK-1500 : High Water Table Hold Down Kit
- SS : Slick Stick™ Oil Level Monitoring System*

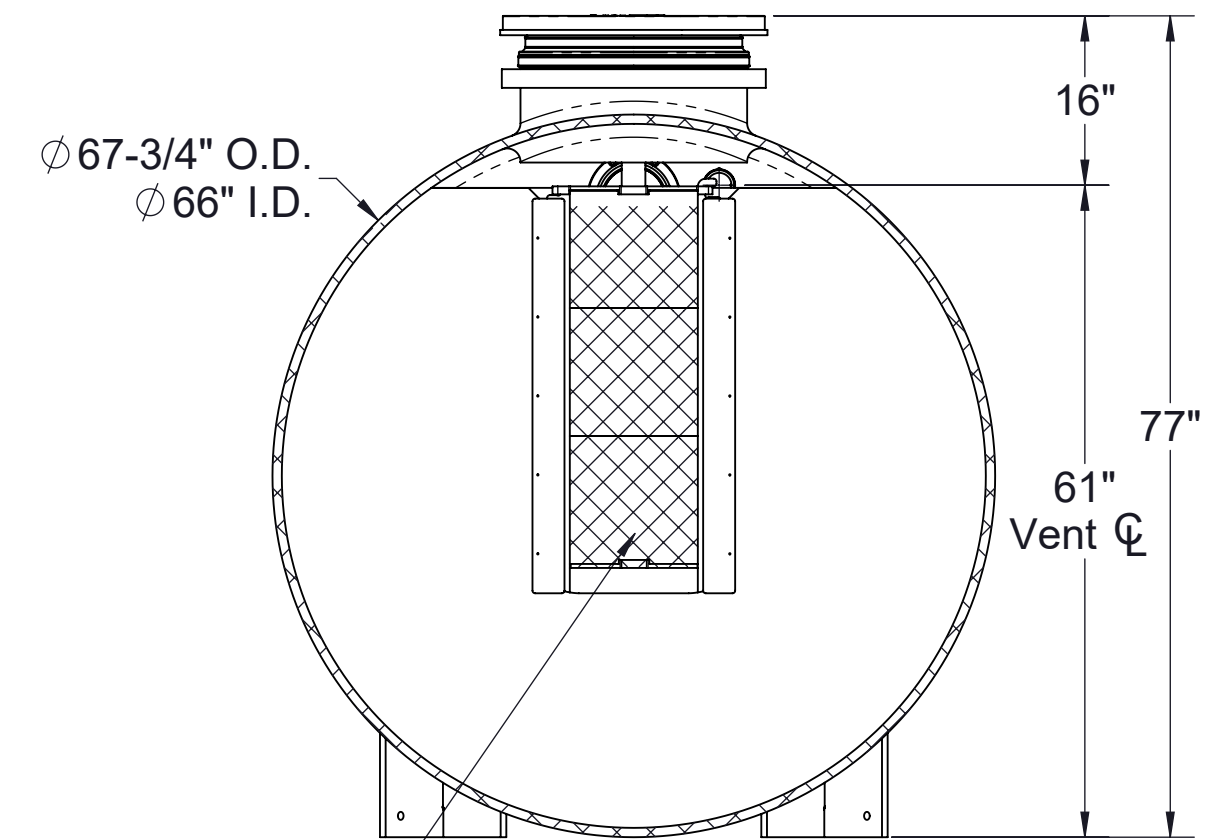
*Monitoring system will raise covers by 3".



ISOMETRIC VIEW



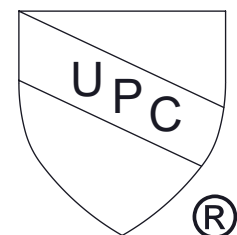
SECTION A-A



SECTION B-B

Signature of Approval: _____
 Company: _____
 Date of Approval: _____
 Specifying Engineer: _____
 Engineering Firm: _____

PO IS NON-CANCELABLE
 ORDER IS NON-RETURNABLE



MODEL NUMBER: OT-1500-CS3			
DESCRIPTION: OIL TANKER™ POLYETHYLENE OIL SEPARATOR WITH CLEAN SWEEP™ COALESCING MEDIA 1500 GALLON CAPACITY			
DWG BY: MJ	DATE: 01/28/2022	REV: 0	ECO:

SPECIFICATION SHEET

Striem
 3100 Brinkerhoff
 Kansas City, KS 66115
 Tel: 913-222-1500
 orders@striemco.com
 www.striemco.com



Made in the U.S.A

PROPRIETARY AND CONFIDENTIAL

THE INFORMATION CONTAINED IN THIS DRAWING IS THE SOLE PROPERTY OF STRIEM, LLC. ANY REPRODUCTION IN PART OR AS A WHOLE WITHOUT THE WRITTEN PERMISSION OF STRIEM, LLC. IS PROHIBITED.