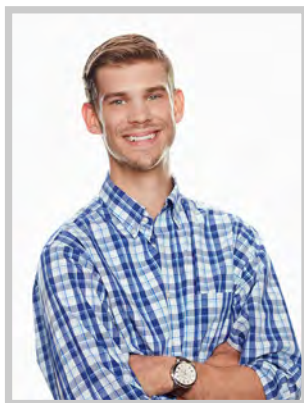
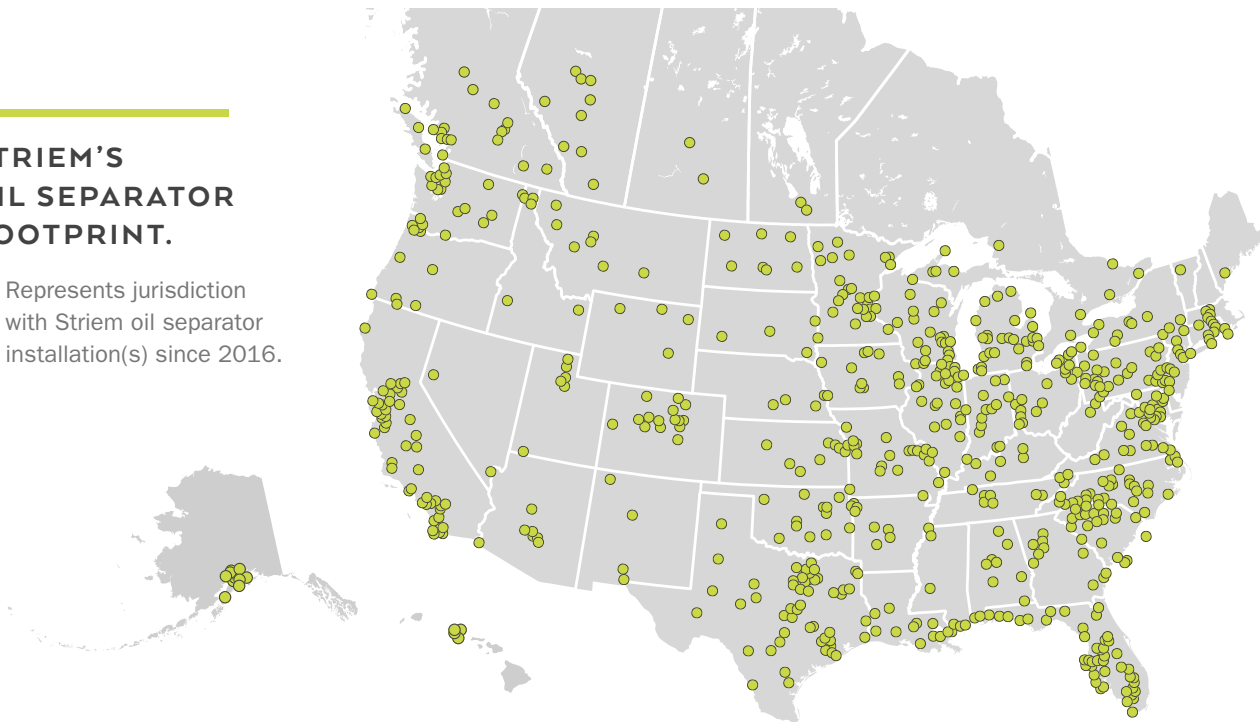


OIL SEPARATORS



STRIEM'S OIL SEPARATOR FOOTPRINT.

- Represents jurisdiction with Striem oil separator installation(s) since 2016.



MEET TUCKER, OUR ENGINEER SPECIALIST. HE'S HERE FOR YOU.

- SIZING ASSISTANCE
- JURISDICTIONAL APPROVALS
- TECHNICAL PRODUCT INFORMATION
- A JOKE OR TWO TO BRIGHTEN YOUR DAY

📞 913.222.1500 ✉️ TUCKER.BELL@STRIEMCO.COM

APPLICATIONS

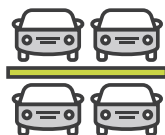
AUTO SERVICE/
REPAIR STATIONS



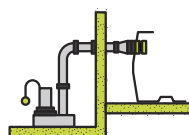
FIRE HOUSE/
POLICE STATIONS



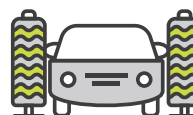
PARKING
GARAGES



HYDRAULIC
ELEVATOR PITS



CAR WASHES



LOADING
DOCKS



AVIATION



BUILT IN KANSAS CITY 

LIFETIME GUARANTEED



STRIEMCO.COM

OIL SEPARATORS



FLOW RATE BASED



OS-50

CONNECTIONS: 4"
MAX FLOW RATE: 50 GPM
LIQUID CAPACITY: 57 GAL.
OIL CAPACITY: 40 GAL.
SAND CAPACITY: 7 GAL.



OS-75

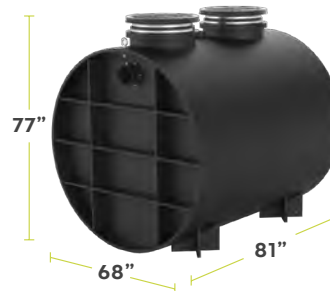
CONNECTIONS: 4", 6" OPTIONAL
MAX FLOW RATE: 75 GPM
LIQUID CAPACITY: 110 GAL.
OIL CAPACITY: 93 GAL.
SAND CAPACITY: 11 GAL.



OS-100

CONNECTIONS: 4", 6" OPTIONAL
MAX FLOW RATE: 100 GPM
LIQUID CAPACITY: 250 GAL.
OIL CAPACITY: 144 GAL.
SAND CAPACITY: 95 GAL.

VOLUME BASED



OS-750

CONNECTIONS: 6", 4" OPTIONAL
LIQUID CAPACITY: 750 GAL.
OIL CAPACITY: 401 GAL.
SAND CAPACITY: 307 GAL.



OS-1000

CONNECTIONS: 6", 4" OPTIONAL
LIQUID CAPACITY: 1,000 GAL.
OIL CAPACITY: 451 GAL.
SAND CAPACITY: 347 GAL.



OS-1500

CONNECTIONS: 6", 4" OPTIONAL
LIQUID CAPACITY: 1,500 GAL.
OIL CAPACITY: 610 GAL.
SAND CAPACITY: 486 GAL.

FEATURES

- CONSTRUCTED OF NON-CORROSIVE POLYETHYLENE
- LIGHTWEIGHT FOR EASY INSTALLATION
- REINFORCED FOR DIRECT BURIAL

OPTIONS

- FIELD-ADJUSTABLE EXTENSIONS
- HIGH WATER ANCHOR KITS
- H2O RATED CAST IRON COVERS
- SLICK STICK™ OIL LEVEL MONITORING SYSTEM

SPEC FORMATS



RFA



DWG



PDF



CSI

*AVAILABLE ONLINE FOR ALL PRODUCTS