

SPECIFICATIONS

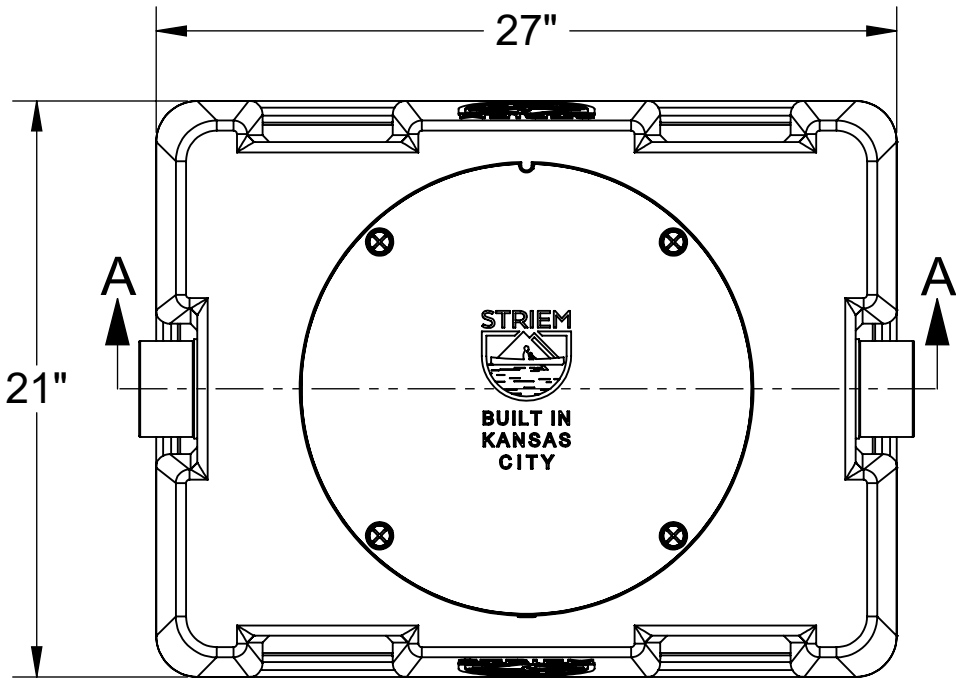
- 1. 3" Plain End inlet/outlet standard.
- 2. Max flow rate: 25 GPM.
- 3. Liquid capacity: 21 Gallons.
- 4. Solids capacity: 10 Gallons.
- 5. Unit weight: 37 lbs.
- 6. Maximum operating temperature 140°F continuous.

NOTES

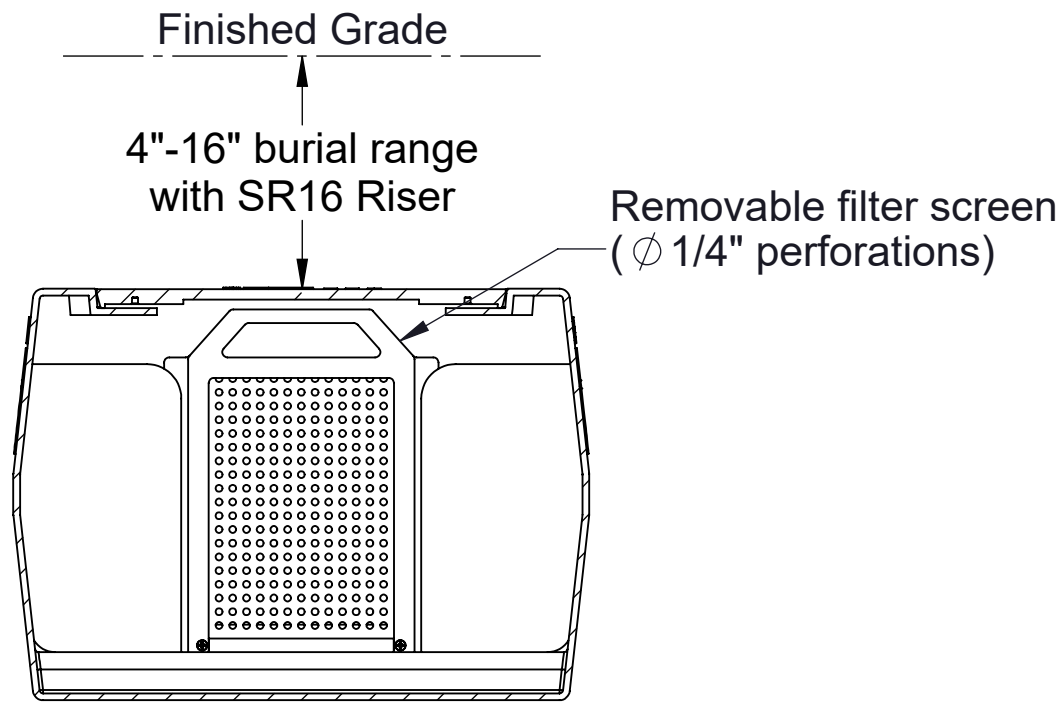
- 1. For gravity drainage applications only.
- 2. Do not use for pressure applications.
- 3. Cover placement allows full access to tank for proper maintenance.
- 4. Removable filter screen for easy maintenance.

ENGINEER SPECIFICATION GUIDE

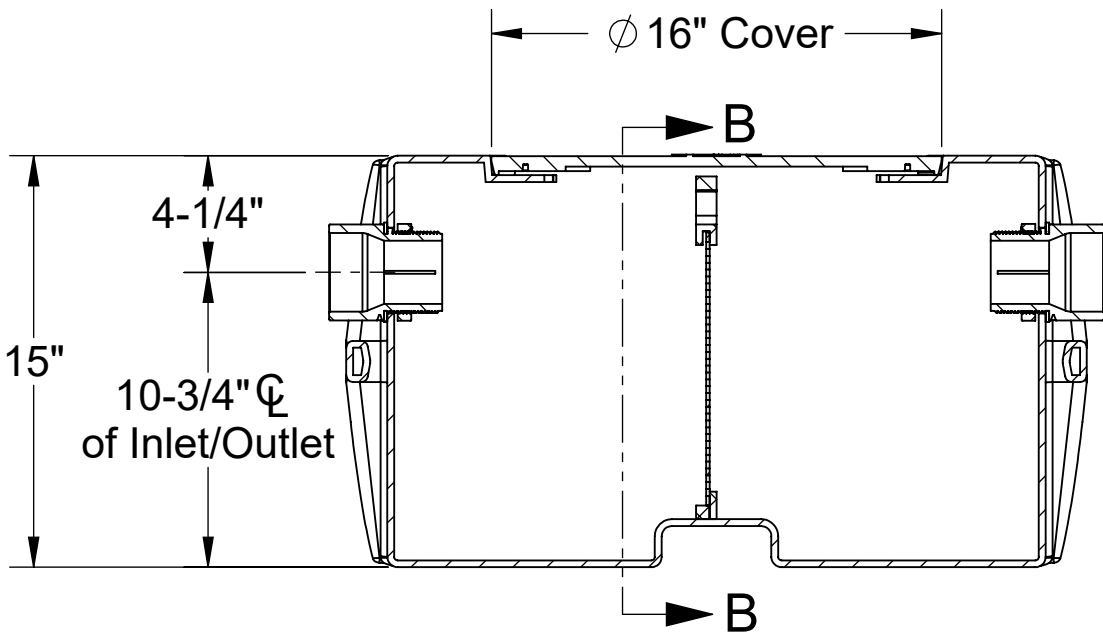
Striem solids interceptor model PS-25-S shall be lifetime guaranteed and made in the USA. Interceptor shall be constructed of polyethylene. Interceptor shall be manufactured for above- or below-grade installation. Field-adjustable riser system is available as an option to bring manhole cover to grade. Interceptor shall have corrosion-resistant removable filter screen with 1/4" perforations. Interceptor liquid holding capacity shall be 21 gallons and solids capacity shall be 10 gallons. Cover shall provide water/gas-tight seal and have a maximum 450 lbs. load capacity when unit is installed above-grade, and 2,500 lbs. when buried with SR16 Riser.



TOP VIEW



SECTION B-B



SECTION A-A

OPTIONS

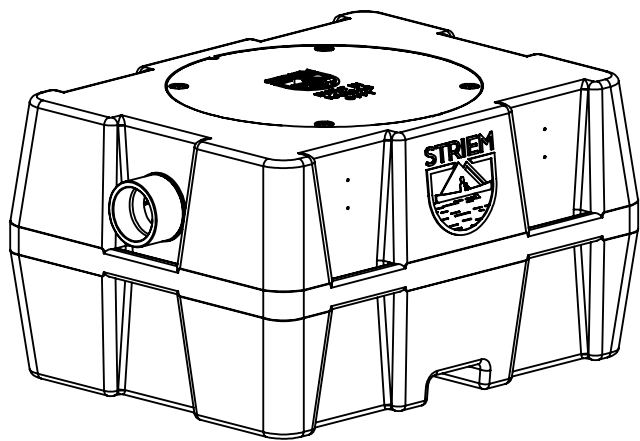
Connection Options

Inlet / Outlet	Size
<input type="checkbox"/> Plain End	<input type="checkbox"/> 2"
<input type="checkbox"/> Male Thread	<input type="checkbox"/> 3"

Additional Options

- ☐ **SR16 Riser:** 4"-16" Burial Range
 - ☐ **CC16:** Integral Membrane Clamping Collar Kit*

*SR16 Riser required with CC16



PROPRIETARY AND CONFIDENTIAL
THE INFORMATION CONTAINED IN THIS DRAWING IS THE SOLE PROPERTY OF STRIEM, LLC.
ANY REPRODUCTION IN PART OR AS A WHOLE WITHOUT THE WRITTEN PERMISSION OF STRIEM, LLC. IS PROHIBITED.

MODEL NUMBER: PS-25-S

DESCRIPTION:

POLYETHYLENE SCREEN STYLE
SOLIDS INTERCEPTOR
25 GALLON LIQUID CAPACITY

DWG BY: ENG DATE: 7/27/2023 REV: 1

SPECIFICATION SHEET

Striem
Kansas City, KS
Tel: 913-222-1500
orders@striemco.com
www.striemco.com

Made in the U.S.A

