

SPECIFICATIONS

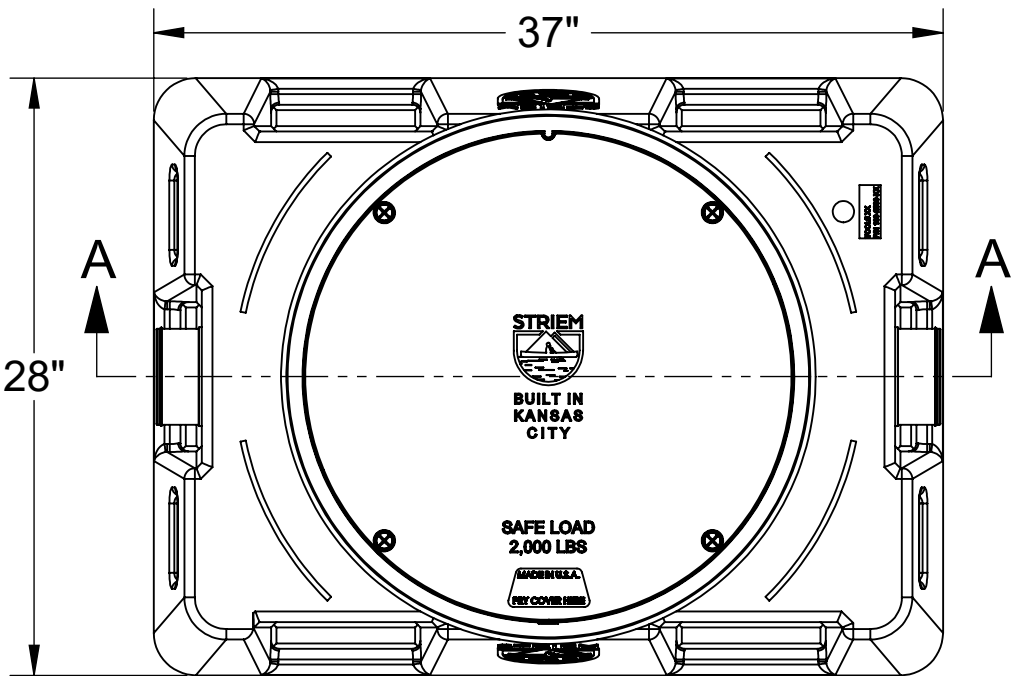
- 1. 4" Plain End inlet/outlet, C24-M cover standard.
- 2. Max flow rate: 50 GPM.
- 3. Liquid capacity: 57 Gallons.
- 4. Solids capacity: 29 Gallons.
- 5. Unit weight w/ standard cover: 103 lbs.; w/ cast iron cover: 163 lbs.
- 6. Maximum operating temperature 140°F continuous.

NOTES

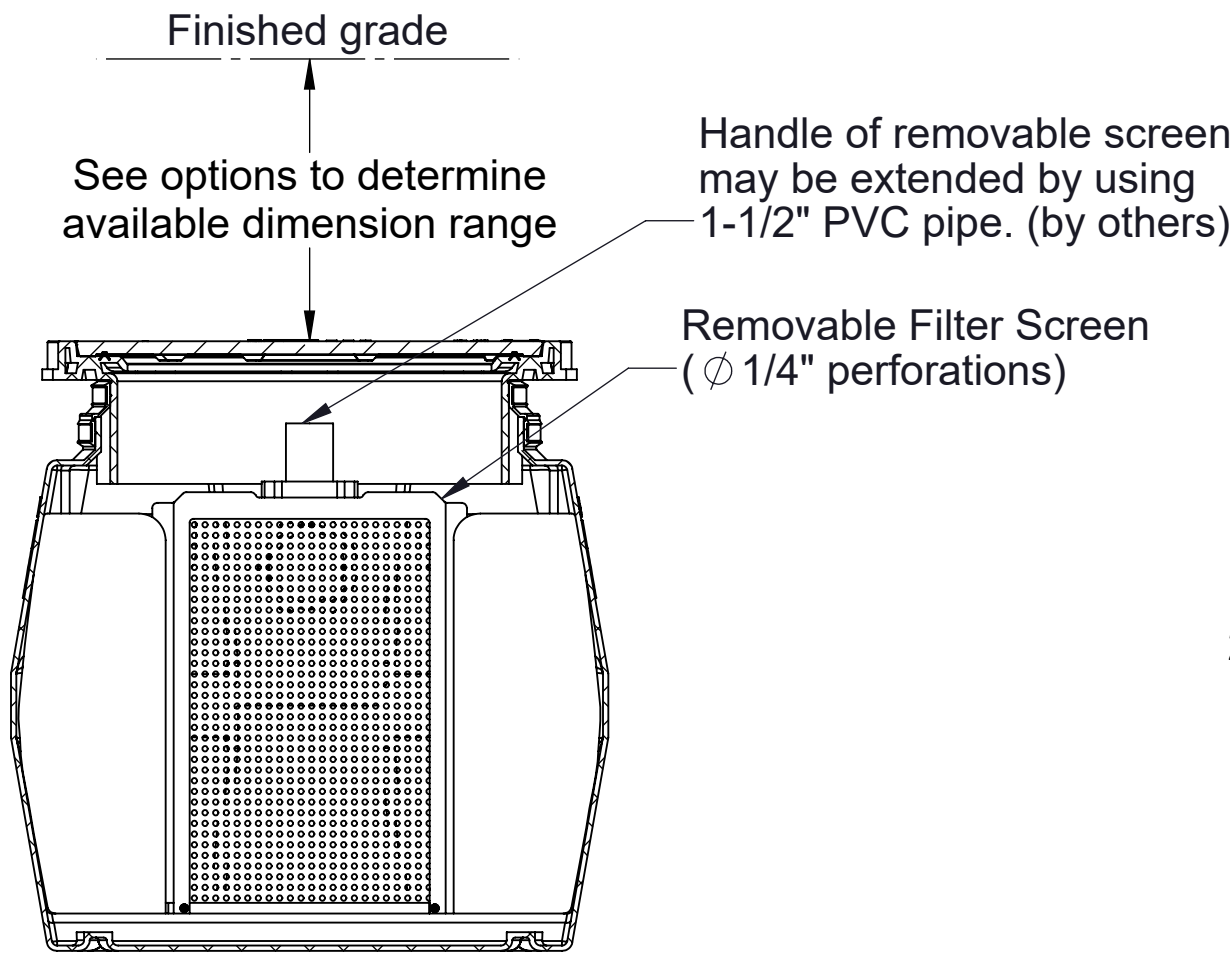
- 1. For gravity drainage applications only.
- 2. Do not use for pressure applications.
- 3. Cover placement allows full access to tank for proper maintenance.
- 4. Removable filter screen for easy maintenance.

ENGINEER SPECIFICATION GUIDE

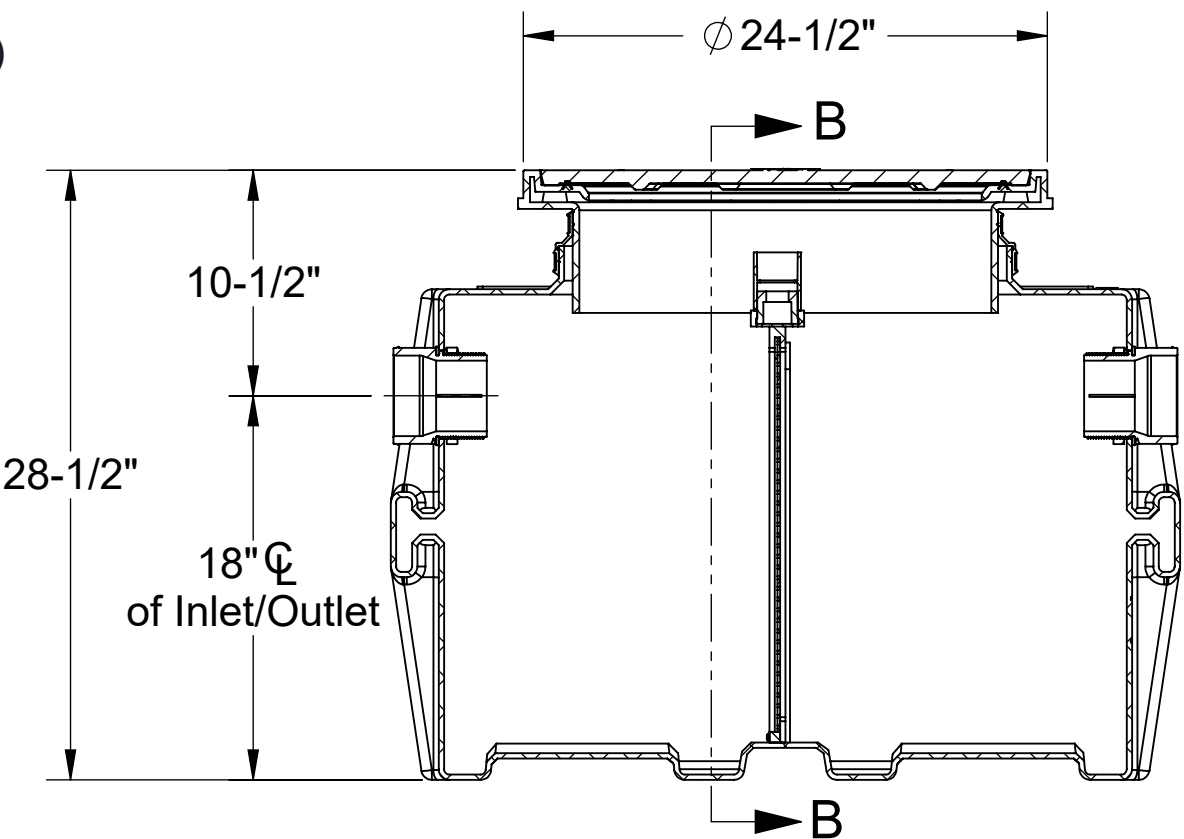
Striem solids interceptor model PS-50-S shall be lifetime guaranteed and made in the USA. Interceptor shall be constructed of polyethylene. Interceptor shall be manufactured for above- or below-grade installation. Field-adjustable riser system is available as an option to bring manhole cover to grade. Interceptor shall have corrosion-resistant removable filter screen with 1/4" perforations. Interceptor liquid holding capacity shall be 57 gallons and solids capacity shall be 29 gallons. Cover shall provide water/gas-tight seal and have a maximum 2,000 lbs. load capacity.



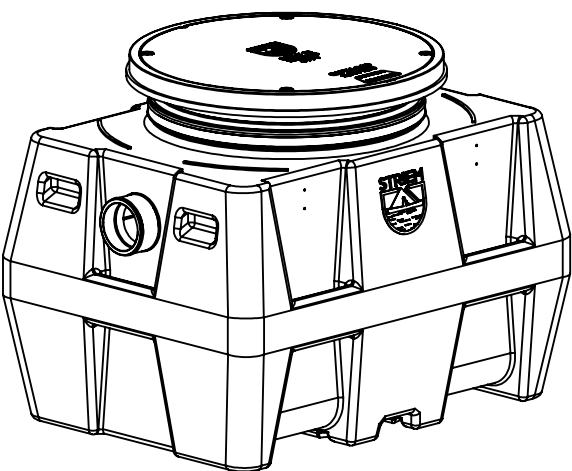
TOP VIEW



SECTION B-B



SECTION A-A



PROPRIETARY AND CONFIDENTIAL
THE INFORMATION CONTAINED IN THIS DRAWING IS THE SOLE PROPERTY OF STRIEM, LLC.
ANY REPRODUCTION IN PART OR AS A WHOLE WITHOUT THE WRITTEN PERMISSION OF STRIEM, LLC. IS PROHIBITED.

OPTIONS

Connection Options

Inlet / Outlet	Size
<input type="checkbox"/> Plain End	<input type="checkbox"/> 2"
<input type="checkbox"/> Male Thread	<input type="checkbox"/> 3"
	<input type="checkbox"/> 4"

Riser Options

From Factory: Up to 5"
<input type="checkbox"/> Up to 24": SR24
<input type="checkbox"/> Up to 39": LR24

Additional Options

- ☐ **HDK-2:** High Water Table Hold Down Kit
- ☐ **C24-H:** Highway Rated Bolted Composite Cover
- ☐ **C24-HP:** H20 Rated Pickable Cast Iron Cover

SPECIFICATION SHEET

MODEL NUMBER: PS-50-S

DESCRIPTION:

POLYETHYLENE SCREEN STYLE
SOLIDS INTERCEPTOR
57 LIQUID GALLON CAPACITY

Striem
Kansas City, KS
Tel: 913-222-1500
orders@striemco.com
www.striemco.com

Made in the U.S.A



DWG BY: ENG DATE: 7/28/2023 REV: 2