

SPECIFICATIONS

- 4" Plain end inlet/outlet, 3" Plain end vents.
- Max flow rate: 43 GPM per 1016.3 of UPC.
- Liquid capacity: 250 Gallons (33.4 cu ft).
- Basket capacity: 7 Gallons.
- Unit weight: 417 lbs.
- (1) 28" H2O rated cast iron grate and (1) 23" H2O solid cast iron cover.

7. NOTES

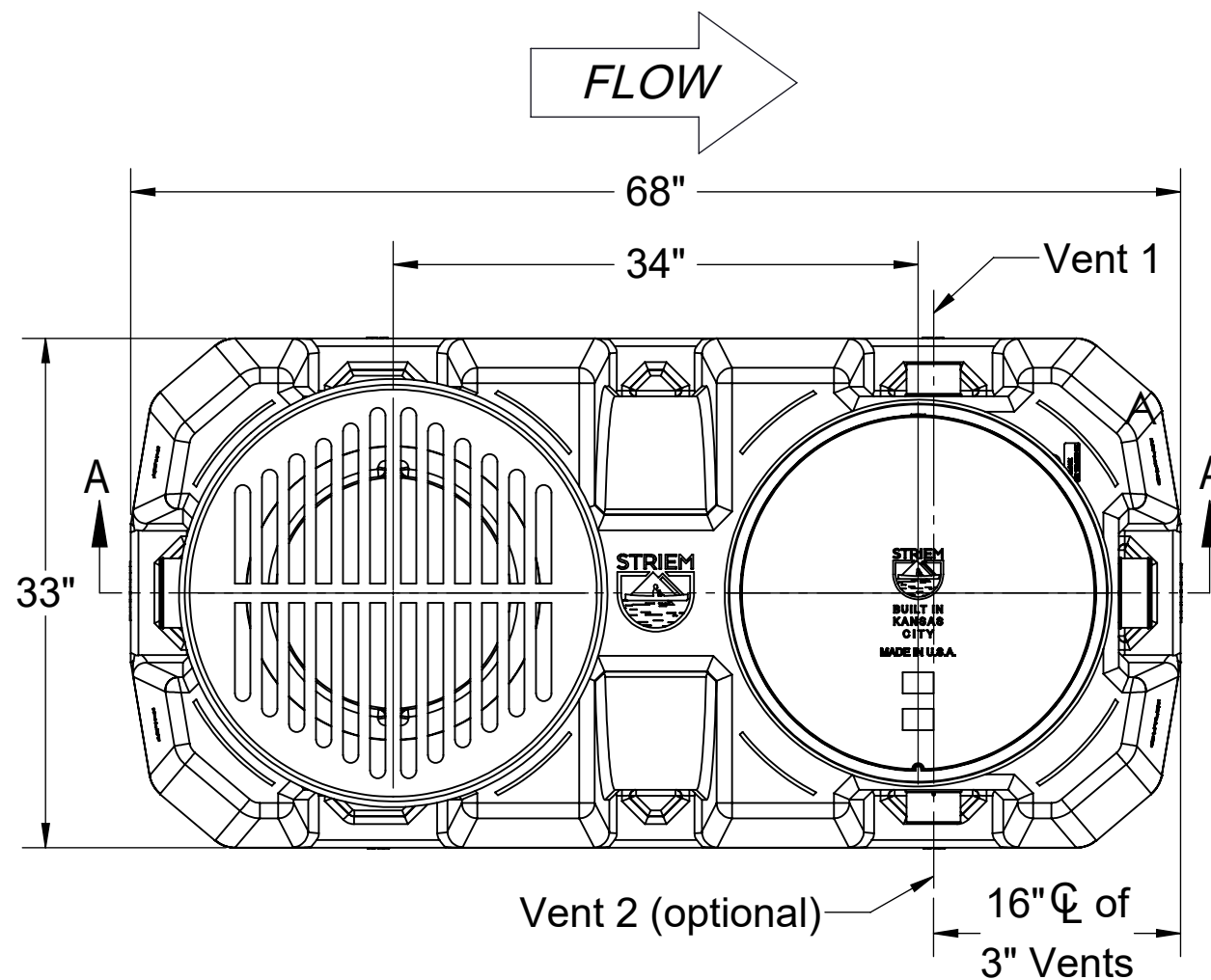
- For gravity drainage applications only. Do not use for pressure applications.
- 3/8" thick seamless polyethylene tank.
- Unit supplied with built-in adapter for up to 2" of adjustability. Additional riser(s) available for deeper burial depth.
- Cover placement allows full access to tank for proper maintenance.
- Narrow footprint allows clearance through doorways and down stairs.

ENGINEER SPECIFICATION GUIDE

Striem sand interceptor model SI-UPC-1016 shall be lifetime guaranteed and made in USA of seamless, rotationally-molded polyethylene. Interceptor shall be furnished for above or below grade installation, with field adjustable riser system, and vent connections. Unit shall have one grate cover over inlet section, and one solid cover over outlet section. Each cover shall be H20 rated.

THIRD PARTY STRUCTURAL ANALYSIS

The SI-UPC-1016 has been structurally analyzed in accordance with the requirements of IBC 2012 and ASCE/SEI 7 for direct burial. The maximum burial depth and backfill material are specified in our installation instructions. The structural design has been reviewed and sealed by a professional engineer registered in the state of California. A sealed structural analysis report is available upon request.



TOP VIEW

Directions: Complete steps 1-3 and submit signed with purchase order.

1. Choose Connection Types.

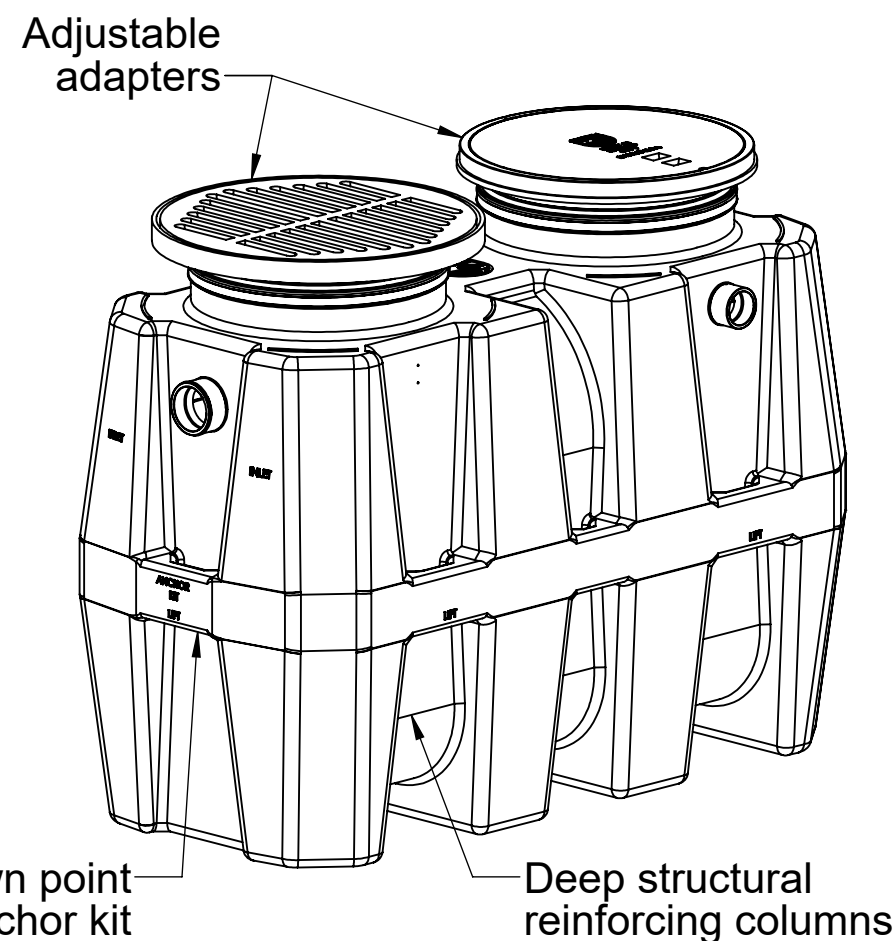
Inlet / Outlet	Size
<input type="checkbox"/> Plain End	<input type="checkbox"/> 3"
<input type="checkbox"/> Male End	<input type="checkbox"/> 4"
	<input type="checkbox"/> 6"

2. Riser Options.

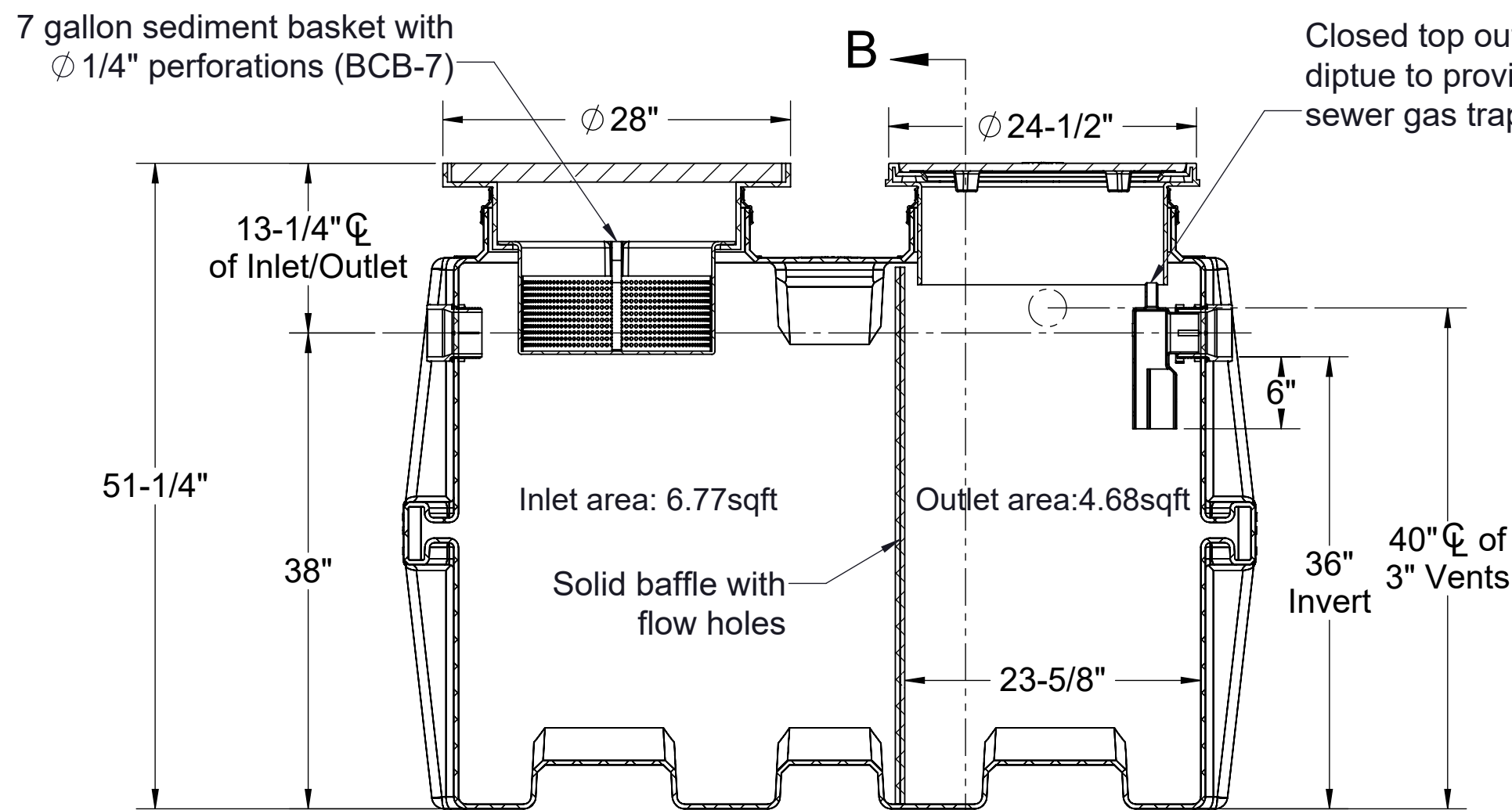
- Included: 0" - 2"**
- SR24 (2): 5"-24"
 - LR24 (2): 24"-39"
 - SR24 (4): 39"-43"
 - SR24 (2) + LR24 (2): 43"-58"
 - LR24 (4): 58"-72"
 - SR24 (2) + LR24 (4): 72"-90"
- *If in the range of 2" - 5", contact Striem for a custom solution.

3. Additional Options.

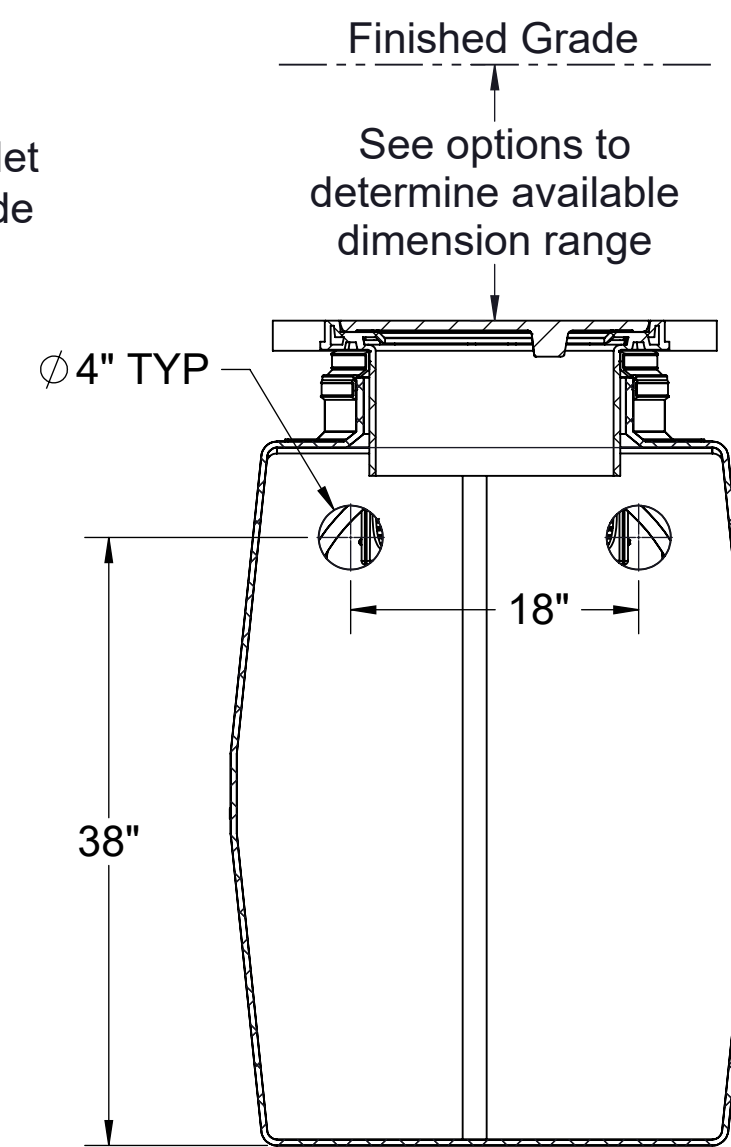
- HDK-2: High Water Anchor Kit



ISOMETRIC VIEW



SECTION A-A



SECTION B-B

Signature of Approval: _____
 Company: _____
 Date of Approval: _____
 Specifying Engineer: _____
 Engineering Firm: _____

PO IS NON-CANCELABLE
 ORDER IS NON-RETURNABLE

MODEL NUMBER: SI-UPC-1016
DESCRIPTION:
 250 GALLON SAND INTERCEPTOR DESIGNED PER SPECIFICATIONS LISTED IN UPC 1016.0.

DWG BY: ENG **DATE:** 12/13/2022 **REV:** 1

SPECIFICATION SHEET

Striem
 3100 Brinkerhoff
 Kansas City, KS 66115
 Tel: 913-222-1500
 orders@striemco.com
 www.striemco.com

Made in the U.S.A



PROPRIETARY AND CONFIDENTIAL

THE INFORMATION CONTAINED IN THIS DRAWING IS THE SOLE PROPERTY OF STRIEM, LLC. ANY REPRODUCTION IN PART OR AS A WHOLE WITHOUT THE WRITTEN PERMISSION OF STRIEM, LLC. IS PROHIBITED.