

SPECIFICATIONS

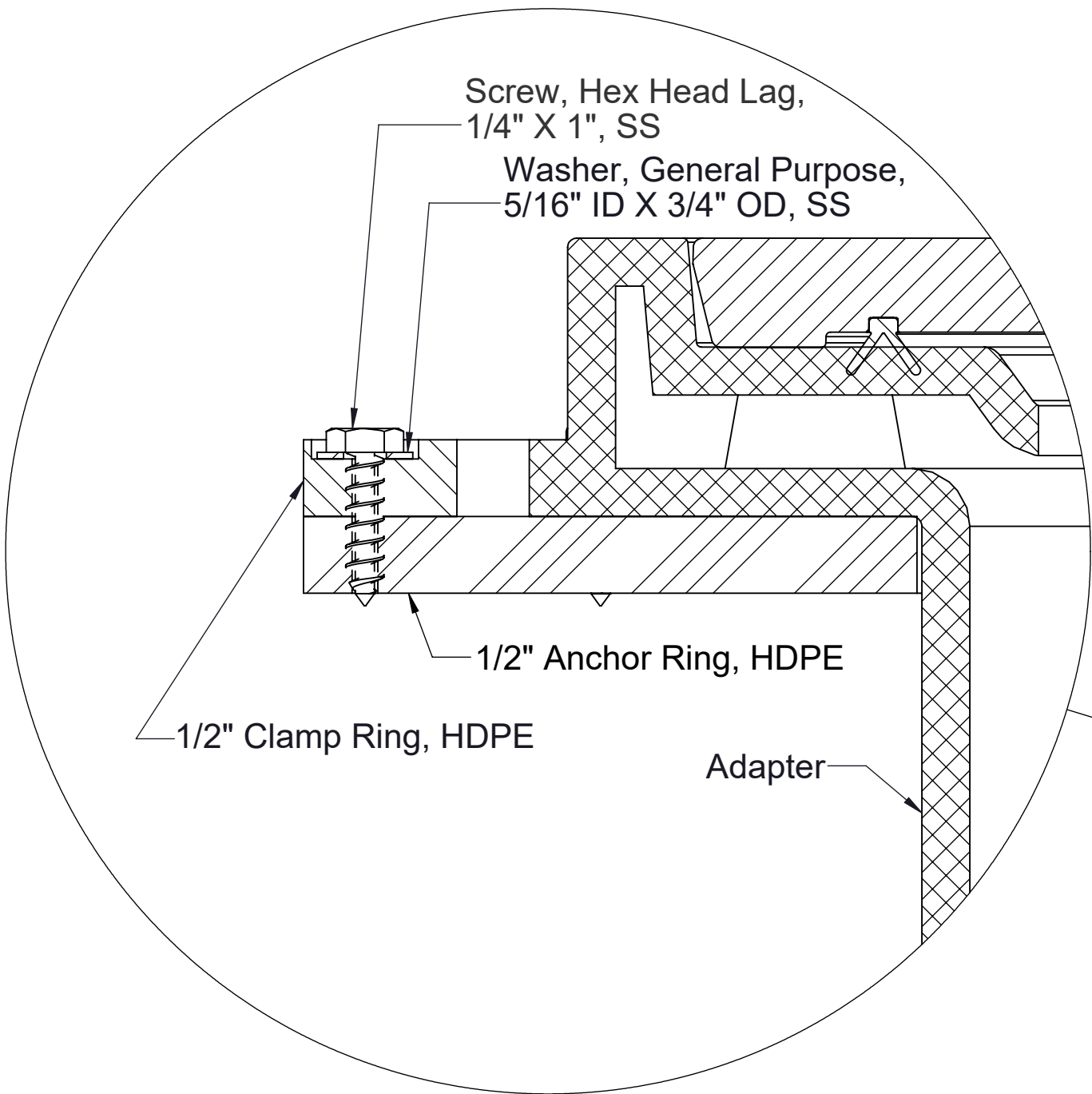
- 1. Molded polyethylene body.
- 2. 3-Piece HDPE clamping ring.

ENGINEER SPECIFICATION GUIDE

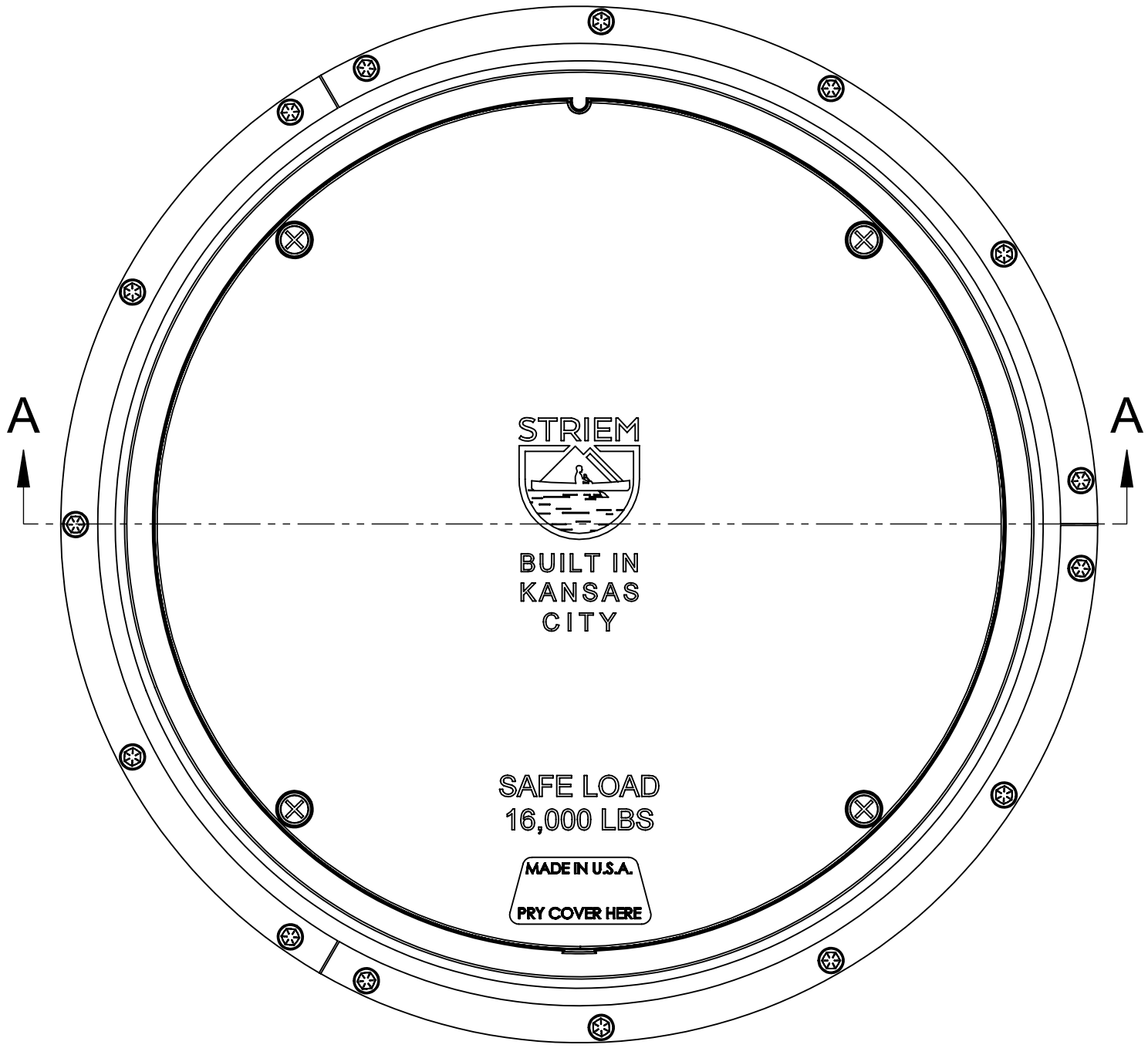
Clamping Collar Kit to consist of rotationally molded polyethylene body, and precision cut 3-piece HDPE clamping ring. Hardware included.

INSTALLATION

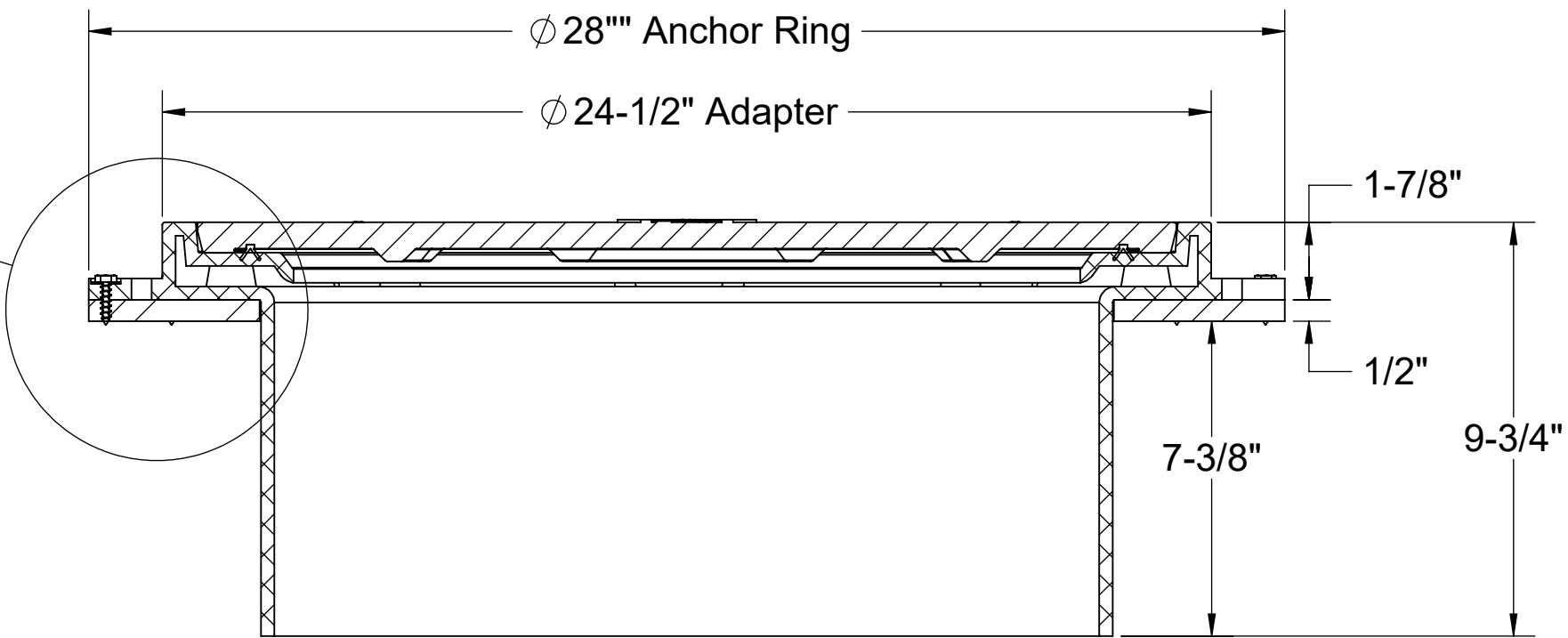
- 1. Remove clamp ring.
- 2. Install membrane (by others).
- 3. Reinstall clamp ring.



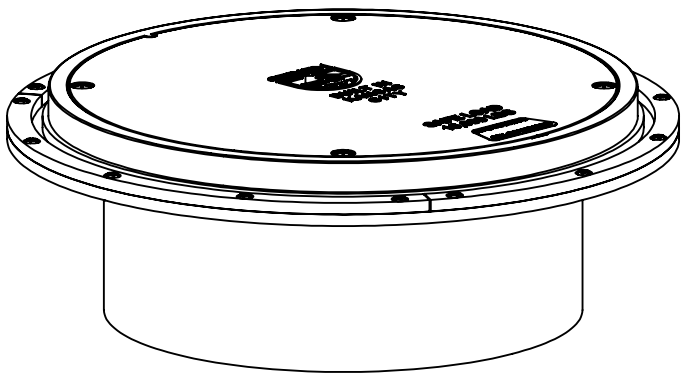
DETAIL B



TOP VIEW



SECTION A-A



PROPRIETARY AND CONFIDENTIAL
THE INFORMATION CONTAINED IN THIS DRAWING IS THE SOLE PROPERTY OF STRIEM, LLC.
ANY REPRODUCTION IN PART OR AS A WHOLE WITHOUT THE WRITTEN PERMISSION OF STRIEM, LLC. IS PROHIBITED.

MODEL NUMBER:

CC-24

DESCRIPTION:

24 SERIES ADAPTER
WITH 3 PIECE HDPE CLAMPING RING

DWG BY: ENG

DATE: 6/26/2023

REV: 3

SPECIFICATION SHEET

Striem
Kansas City, KS
Tel: 913-222-1500
orders@striemco.com
www.striemco.com

Made in the U.S.A

