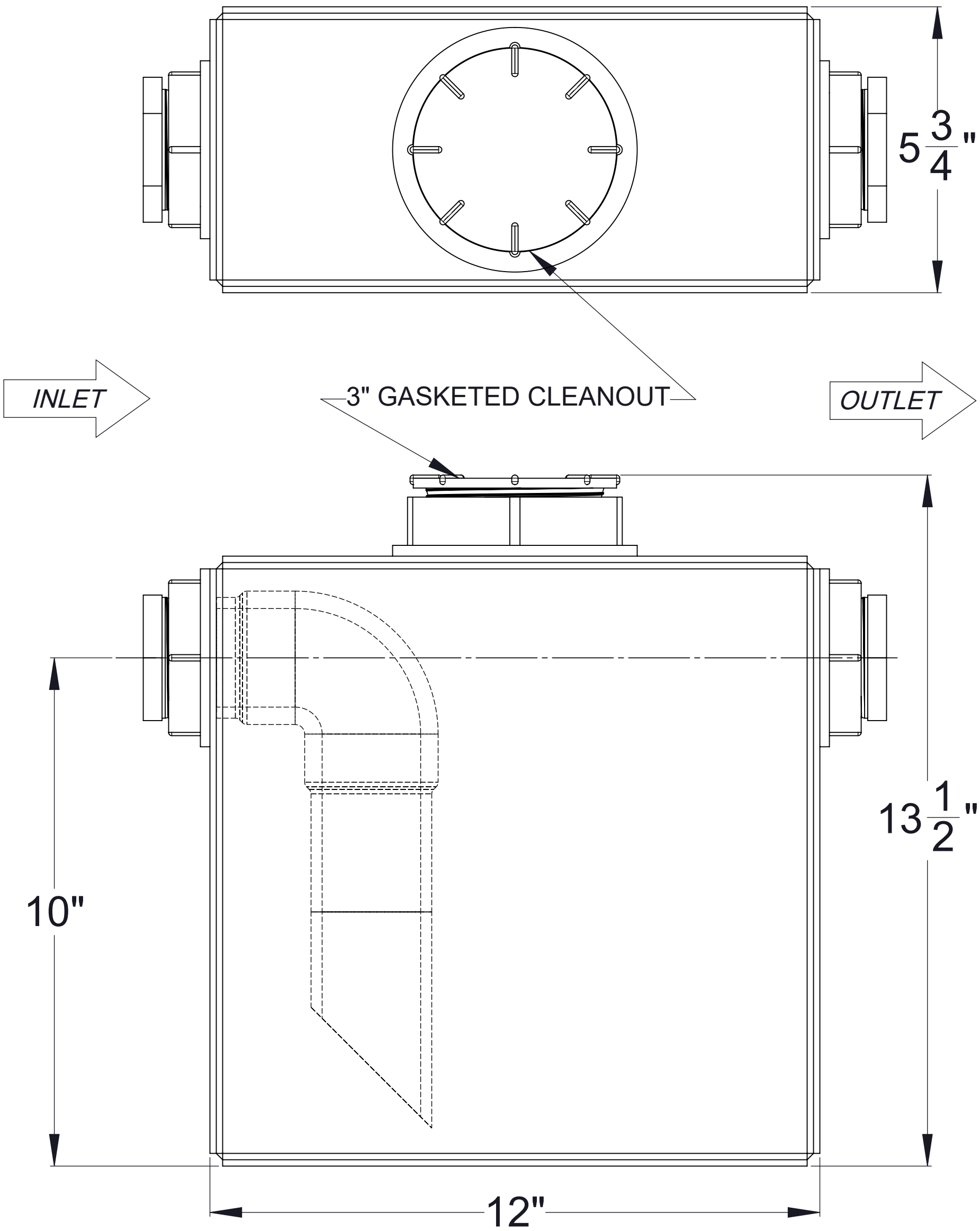
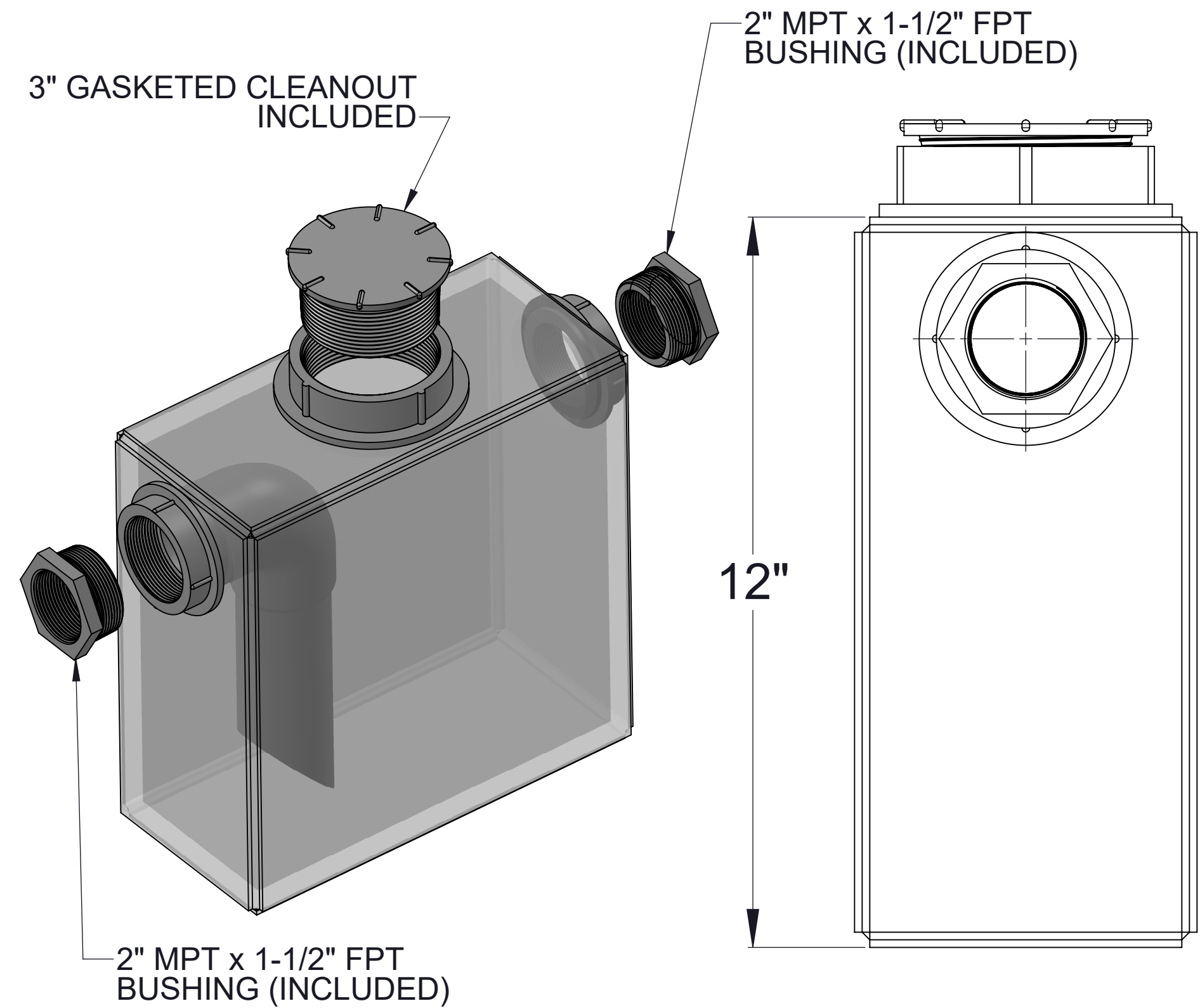



SPECIFICATIONS

- 1. Polyethylene construction.
- 2. Liquid capacity: 2 Gallons (1-1/2"), 1.8 Gallons (2").
- 3. 1-1/2" or 2" FPT connections standard (polypropylene bushings included).
- 4. 3" gasketed top access port.
- 5. Built-in sewer gas trap.
- 6. Bottom of tank must be supported if not sitting on floor. Support must hold at least 50 lbs.
- 7. 25-pound limestone capacity (sold separately, Model # LS-25).
- 8. Unit weight: 10 lbs (dry), 25 lbs (wet), 40 lbs (wet, with limestone).
- 9. Uses: Neutralization (w/ limestone) or dilution (no limestone).

ENGINEER SPECIFICATION GUIDE

Striem neutralization tank model LB-2-ADA shall be lifetime guaranteed and Made in USA of polyethylene with minimum 1/2" uniform wall thickness. Tank shall be furnished with inlet/outlet connection for 1-1/2" or 2" drain line pipe size. Tank shall be furnished with 3" top clean-out connection. Tank shall be watertight up to 36" head and contain an internal sewer gas trap.



MODEL NUMBER: LB-2-ADA				SPECIFICATION		
DESCRIPTION:  POINT OF USE NEUTRALIZATION TANK FOR ADA SINK				Striem 3100 Brinkerhoff Kansas City, KS 66115 Tel: 913-222-1500 Fax: 913-291-0457 www.striemco.com  Made in the U.S.A		
DWG BY: RS	DATE: 7/14/20	REV: -	ECO: ---			