



# SIDEKICK™ SOLIDS INTERCEPTOR

Installation instructions also apply to the SIDEKICK-TP model.

## OVERVIEW

Sidekick™ is a side-access solids interceptor that is intended to be installed in point-of-use sink applications. It is designed to intercept solids from wastewater.

## OPERATION

Solids-laden wastewater flows through the top inlet connection, then through **the perforated basket**, where solids are separated from water. The solids-free wastewater exits to the sanitary waste system through one of the side outlets or through the bottom outlet. **The perforated basket** is easily removed to quickly dispose of collected solids, then reinserted back into the **housing**.

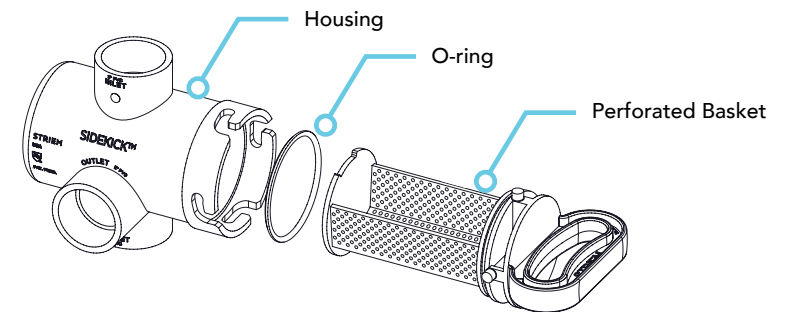
## LIFETIME WARRANTY

Our products are designed to last the lifetime of the plumbing system in which they are installed. If they don't, we will repair or replace them at no charge. Product damage due to normal wear and tear may be repaired or replaced at a reasonable charge.

## SIDEKICK™ SOLIDS INTERCEPTOR

### WHAT'S INCLUDED

- Housing
- Perforated Basket
- O-ring
- PVC Inverted No Sump Plug (2)
- 2" x 1-1/2" PVC Adapter (2)
- 2" x 1-1/2" NPS PVC Adapter



2" x 1-1/2" NPS  
PVC Adapter



2" x 1-1/2"  
PVC Adapter



2" PVC Inverted  
No Sump Plugs

913-222-1500    HELP@STRIEMCO.COM    STRIEMCO.COM  
 CUSTOMER SERVICE HOURS: 8 AM - 5 PM CST

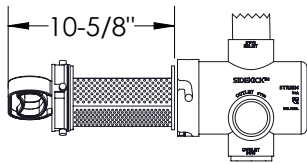


# INSTALLATION

## INSTALLATION (FIGURE 2)

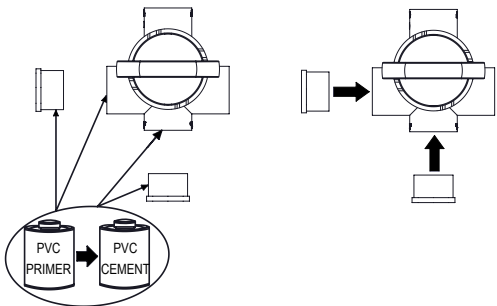
- 1 Prior to installation, ensure all components are accounted for (see "What's Included") and ensure no component has been damaged during transportation.
- 2 Sidekick™ is designed for above grade installation only.
- 3 Install interceptor with enough space to remove **perforated basket**. (See Figure 1)
- 4 Socket weld **PVC Inverted No Sump Plugs** in two unused outlets using PVC primer and cement.
- 5
  - Connect drainage piping (**by others**) to inlet and outlet.
  - The **housing** is supplied with integral 2" PVC socket connections.
  - Sidekick™ can be directly coupled to a standard 1-1/2" NPS threaded basket strainer using the included **2"x 1-1/2" NPS PVC Adapter**
  - Check with Authority Having Jurisdiction for pipe and fitting requirements.
- 6 Inspect all pipe joints and **o-ring** seal to ensure there are no leaks.
- 7 Check with Authority Having Jurisdiction for trap requirements.

**FIGURE 1: Minimum Distance to Remove Basket**

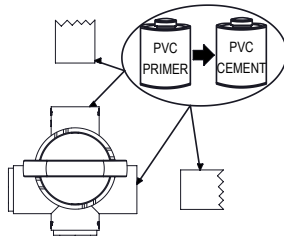


**FIGURE 2: Installation**

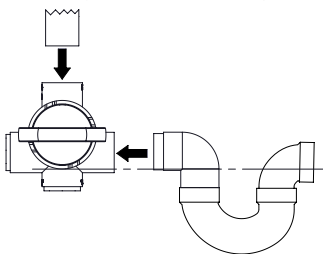
Cap Unused Outlets



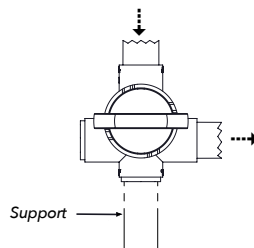
Connect Inlet and Outlet Piping (by others)



If a P-trap is being installed after the unit, Striem recommends the invert of the outlet of the trap to be below the bottom of the **perforated basket** to ensure there is no standing water in the **housing**



When required, Striem **Inverted No Sump Plug** is designed to accept 1-1/2" plastic pipe as support.



# MAINTENANCE

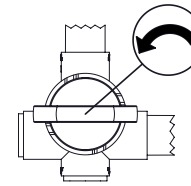
## MAINTENANCE (FIGURE 3)

Maintenance frequency is dependent on the volume and composition of solids-laden wastewater. Maintain the unit whenever solids are visually accumulating, or the user notices a decrease in drainage flow.

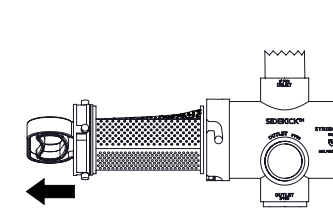
- 1 Rotate the **perforated basket handle** counterclockwise to disengage the locking pins.
- 2 Remove the **perforated basket** from **housing**.
- 3 Empty the solids into a proper waste receptacle.
- 4 Reinsert the **perforated basket** in the **housing**.
- 5 Rotate **perforated basket handle** clockwise to reengage the locking pins.
- 6 Sidekick™ is ready for use.

**FIGURE 3: Maintenance**

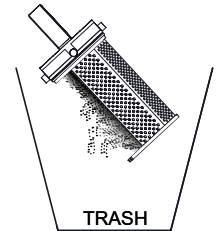
Rotate handle to disengage pins



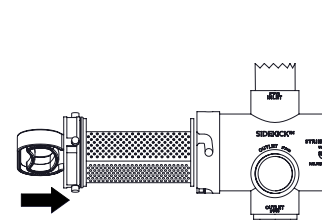
Remove **perforated basket** from **housing**



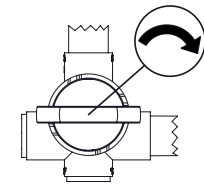
Empty Solids



Insert **perforated basket** into **housing**



Rotate handle to engage pins

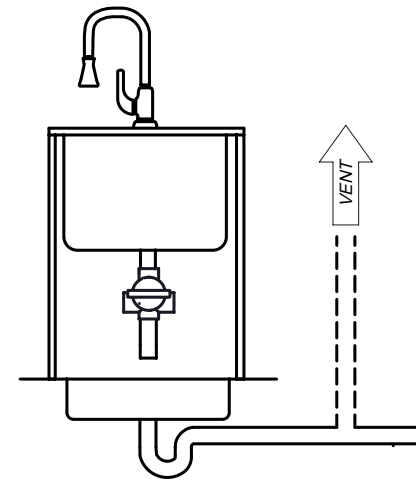
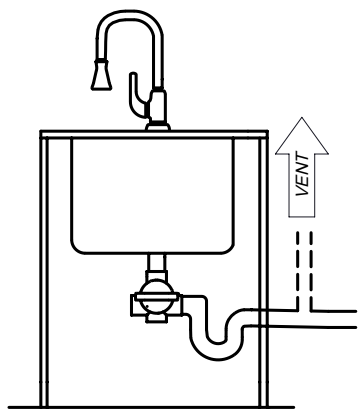


# POSSIBLE INSTALLATION ARRANGEMENTS\*

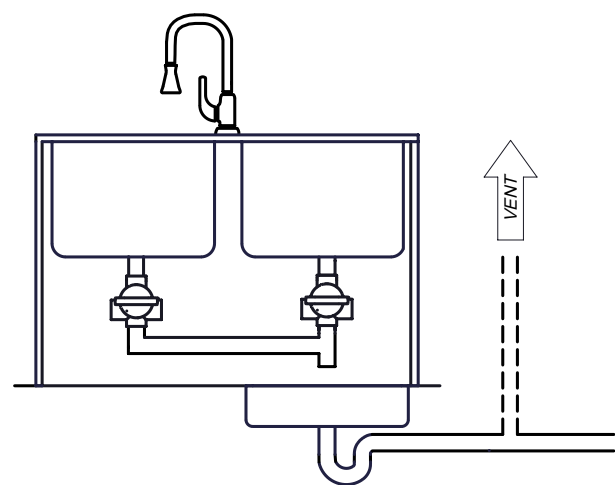
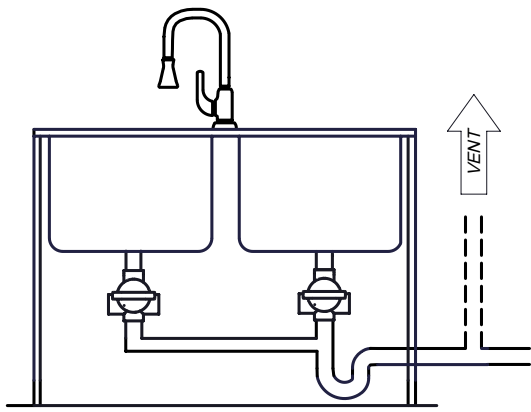
## DIRECT CONNECTION

## INDIRECT CONNECTION

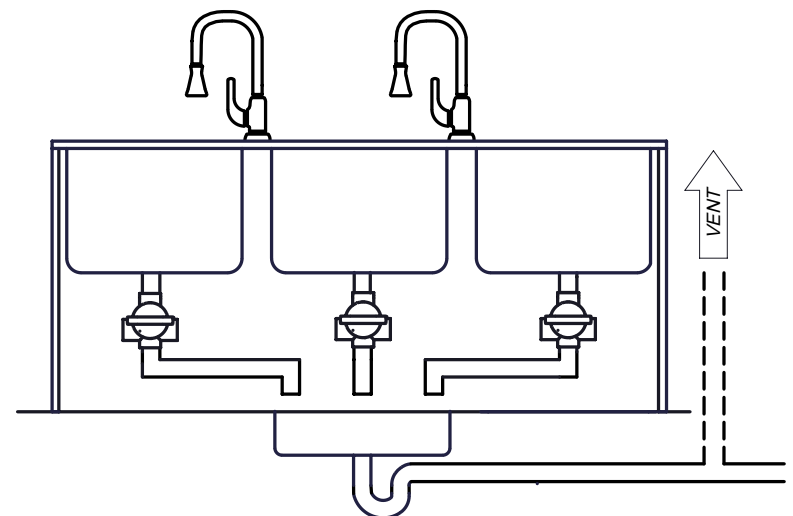
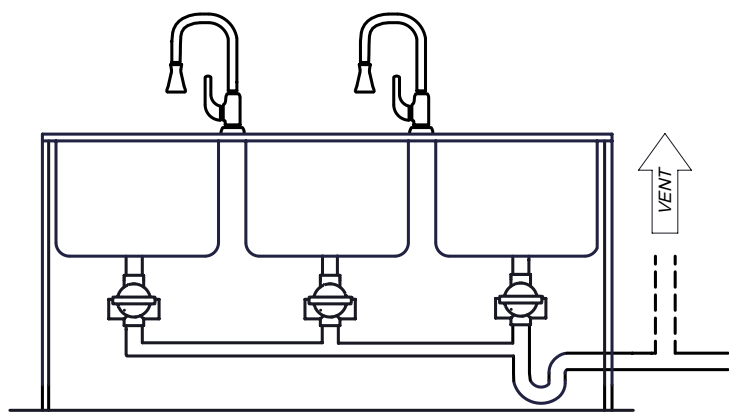
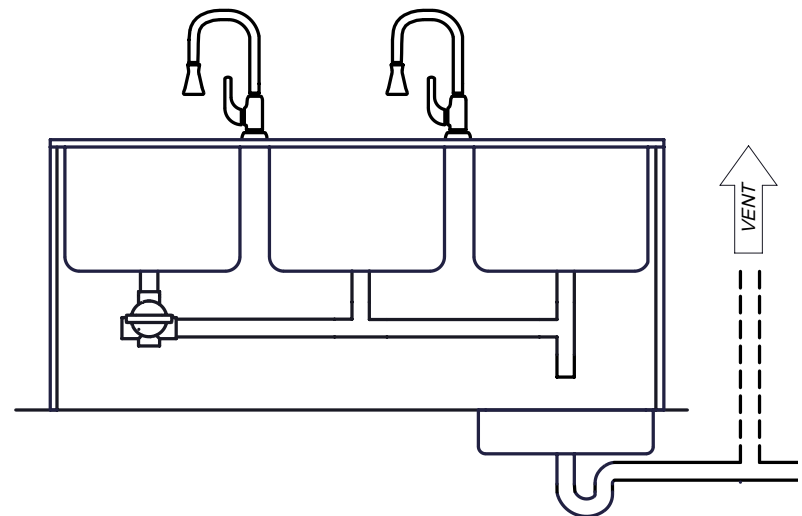
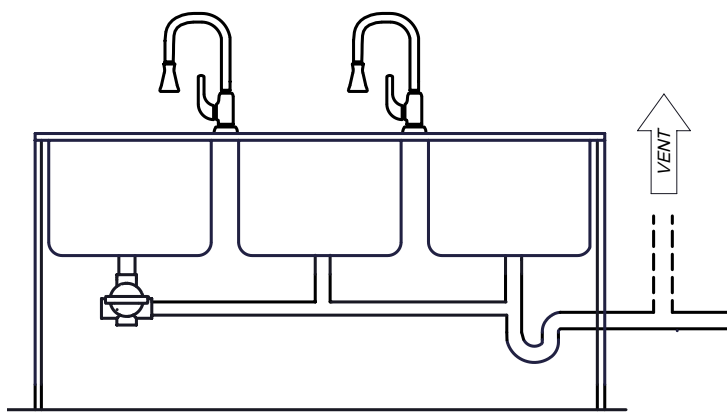
### One Sink



### Two-Compartment Sink



### Three-Compartment Sink



\*Illustrations do not depict all install layouts