

SPECIFICATIONS

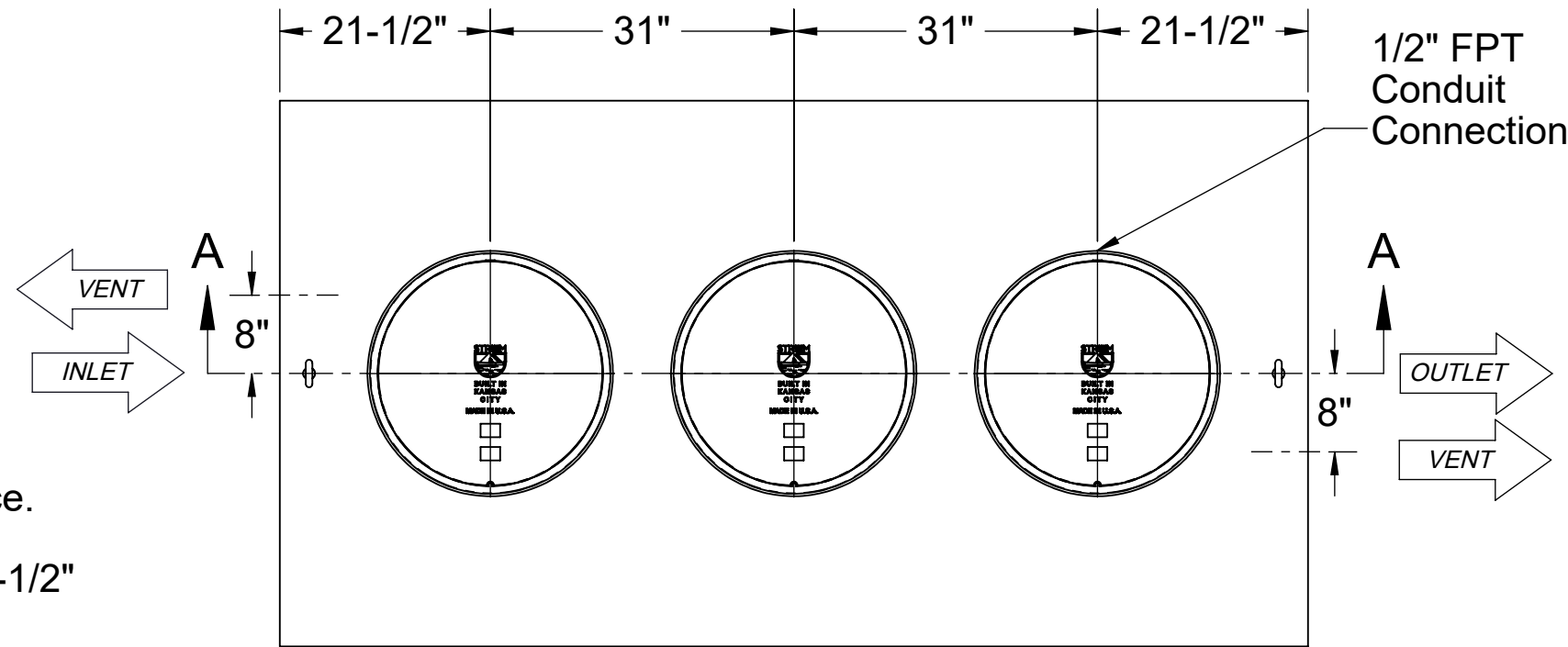
- 1. 6" Plain End inlet/outlet shown, 3" Plain End vents standard.
- 2. Max flow rate: 314 GPM.
- 3. Max flow rate to achieve 5 ppm of residual light liquid in effluent: 45 GPM.
- 4. Liquid capacity: 750 gallons (100 cu. ft.).
- 5. Oil capacity: 323 gallons.
- 6. Solids capacity: 148 gallons.
- 7. Unit weight: 1353 lbs.
- 8. Maximum operating temperature 140 °F continuous.
- 9. Slick Stick Oil Level Monitoring System (see page 2).

NOTES

- 1. For gravity drainage applications only.
- 2. Do not use for pressure applications.
- 3. Cover placement allows full access to tank for proper maintenance.
- 4. Lifting lug set for easy install.
- 5. Handle of removable coalescing media may be extended using 1-1/2" PVC pipe by others.

ENGINEER SPECIFICATION GUIDE

Striem oil separator model OT-750-SS-CS3 shall be lifetime guaranteed and made in the USA. Separator shall be constructed of polyethylene with 7/8" nominal wall thickness. Separator shall be manufactured for below-grade installation. Field-adjustable riser system is available as an option to bring manhole covers to grade. Separator flow rate shall be 314 GPM. Separator liquid holding capacity shall be 750 gallons and oil capacity shall be 323 gallons. Solids capacity shall be 148 gallons. Covers shall be H20 rated pickable cast iron. Separator shall be certified to IAPMO IGC 183-2016 and carry a UPC listing.



TOP VIEW

OPTIONS

Connection Options (Plain End Only)

Inlet / Outlet

- ☐ 4"
- ☐ 6"
- ☐ 8"

SELECTION
REQUIRED

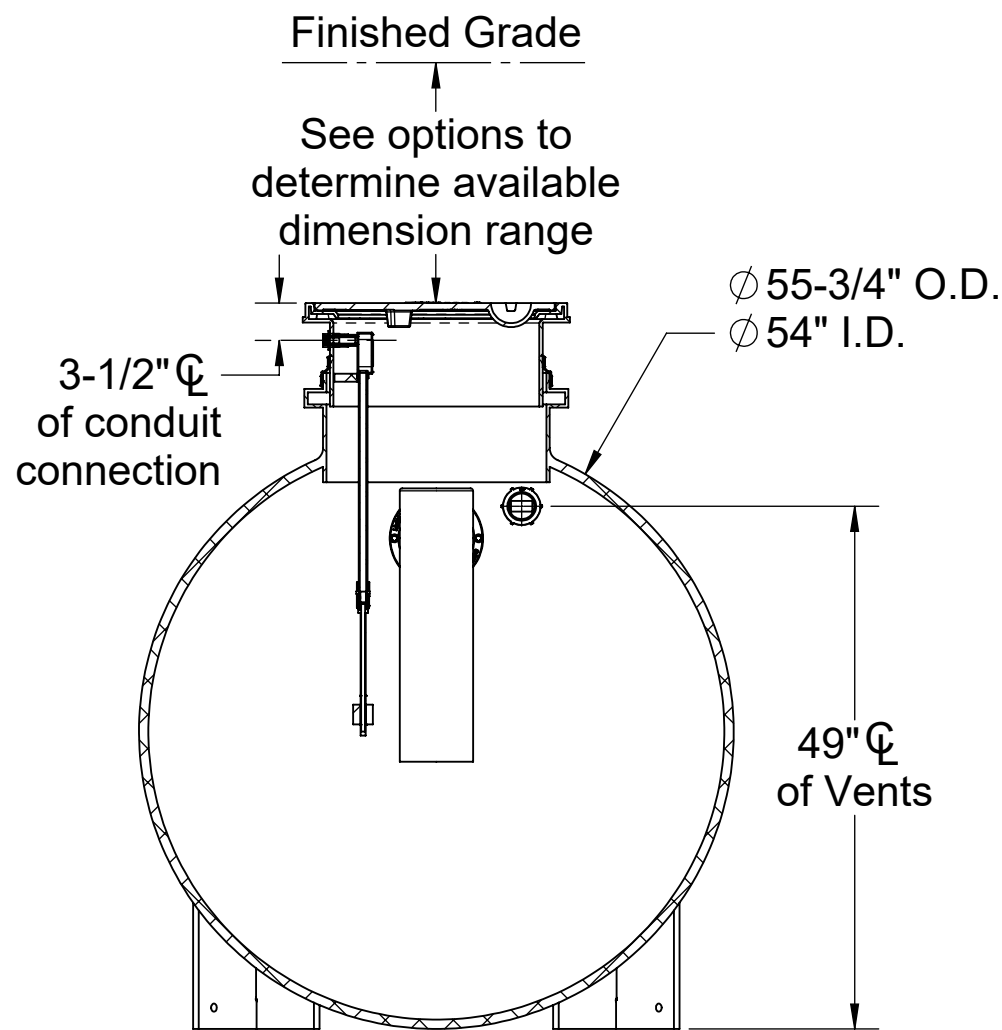
Riser Options

From Factory: Up to 2"

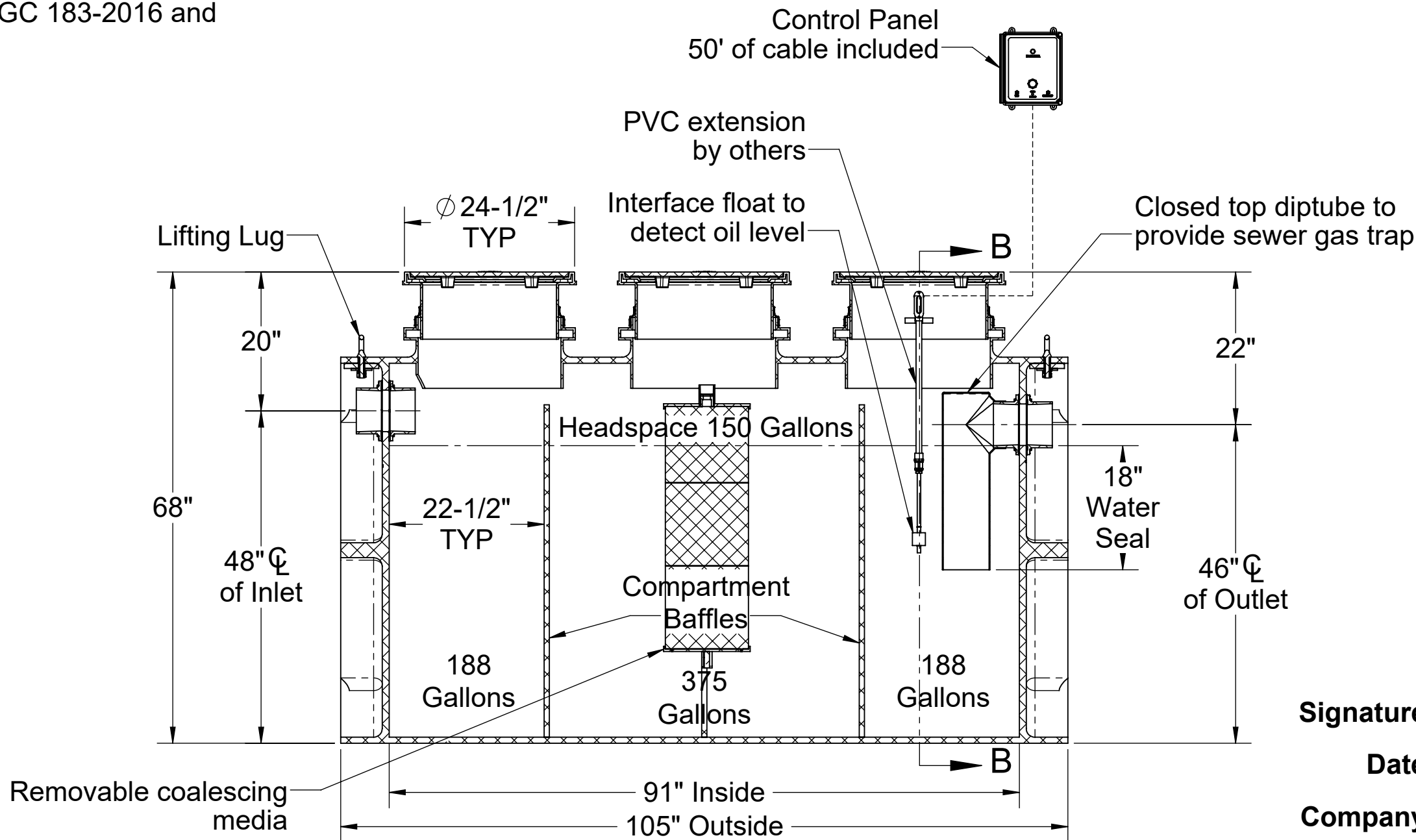
- ☐ Up to 21": SR24 (3)
- ☐ Up to 36": LR24 (3)
- ☐ Up to 40": SR24 (6)
- ☐ Up to 55": SR24 (3) + LR24 (3)
- ☐ Up to 69": LR24 (6)
- ☐ Up to 87": SR24 (3) + LR24 (6)
- ☐ Up to 103": LR24 (9)

Additional Options

- ☐ HDK-4: High Water Table Hold Down Kit

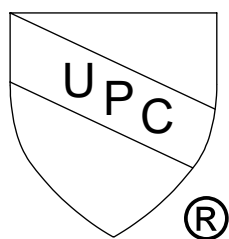
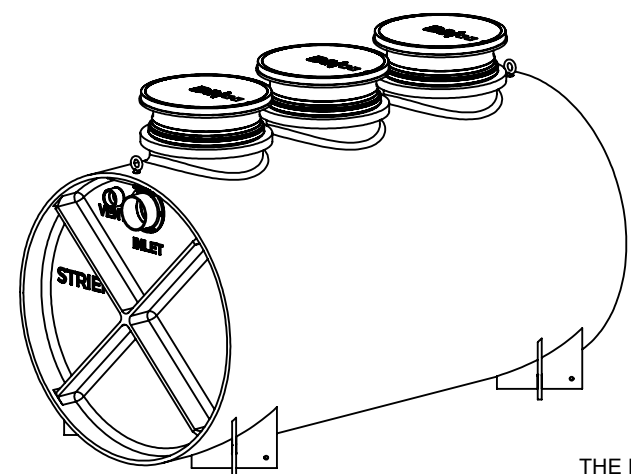


SECTION B-B



SECTION A-A

Signature: _____
Date: _____
Company: _____
Project: _____



PO IS NON-CANCELABLE
ORDER IS NON-RETURNABLE

PROPRIETARY AND CONFIDENTIAL

THE INFORMATION CONTAINED IN THIS DRAWING IS THE SOLE PROPERTY OF STRIEM, LLC. ANY REPRODUCTION IN PART OR AS A WHOLE WITHOUT THE WRITTEN PERMISSION OF STRIEM, LLC. IS PROHIBITED.

MODEL NUMBER: OT-750-SS-CS3

DESCRIPTION:
OIL TANKER™
POLYETHYLENE OIL SEPARATOR WITH
SLICK STICK™ OIL LEVEL MONITORING SYSTEM
AND CLEAN SWEEP™ COALESCING MEDIA
1000 GALLON CAPACITY

DWG BY: ENG DATE: 5/12/2023 REV: 0

SPECIFICATION SHEET

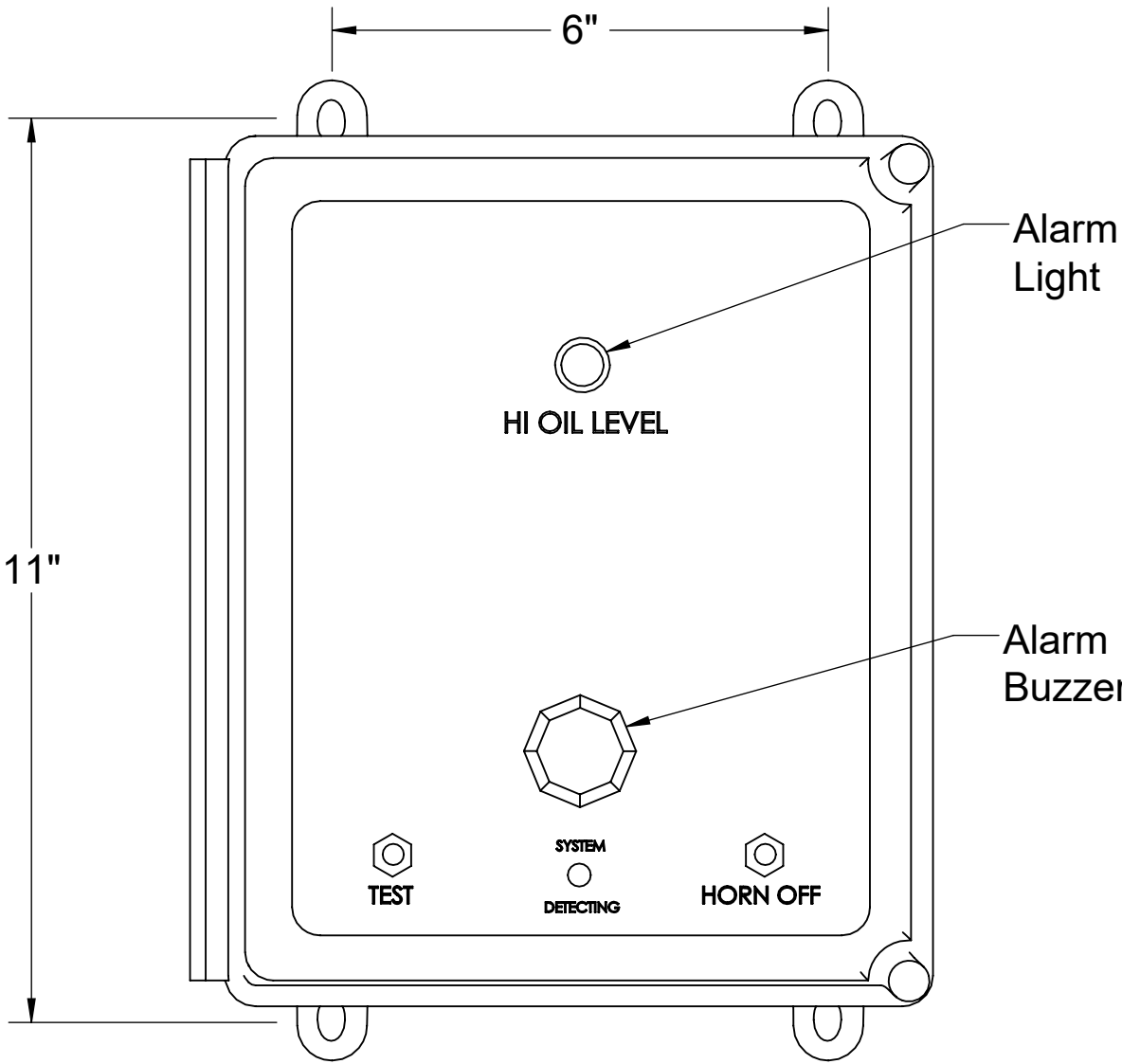
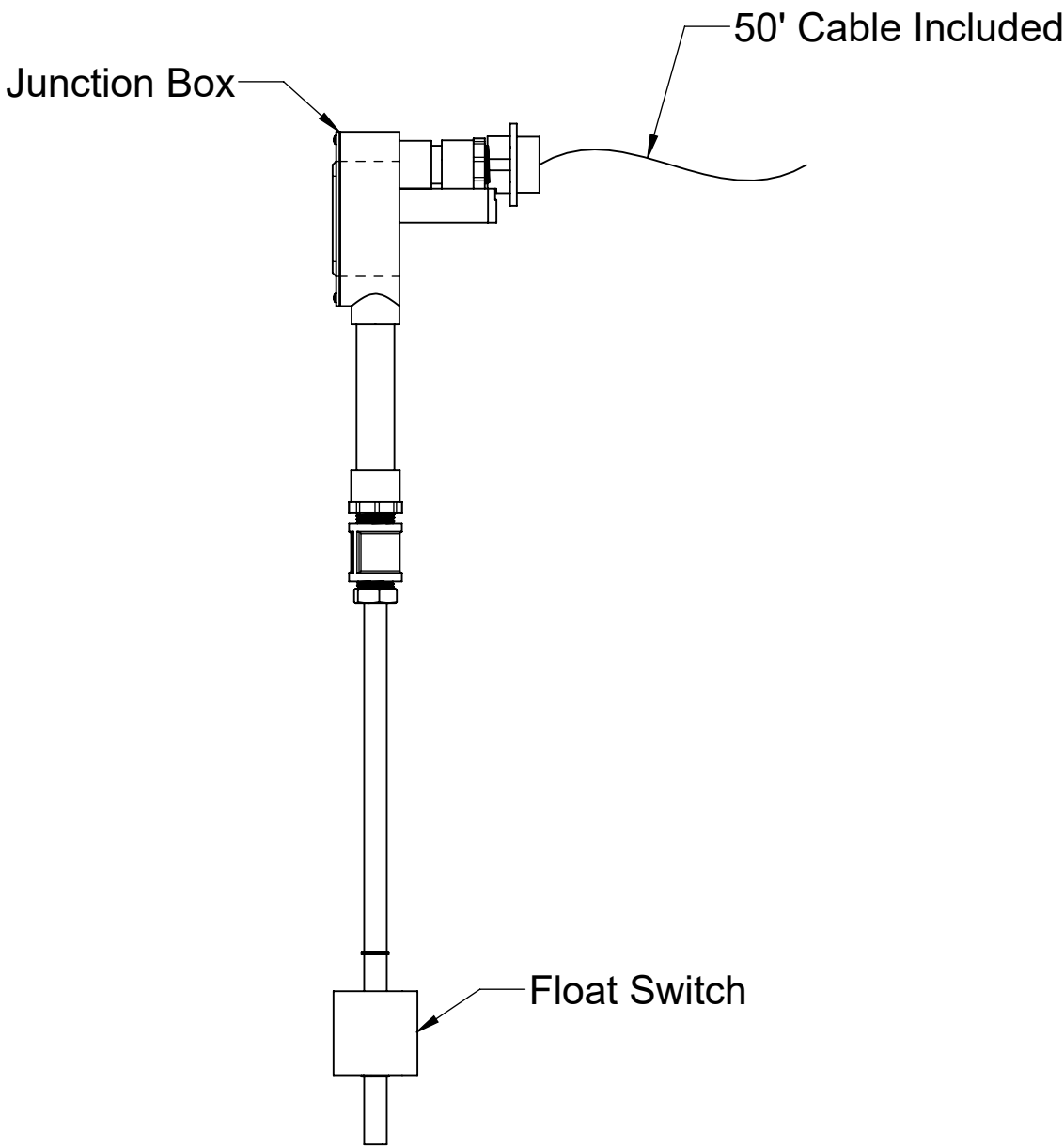
Striem
Kansas City, KS
Tel: 913-222-1500
orders@striemco.com
www.striemco.com

Made in the U.S.A

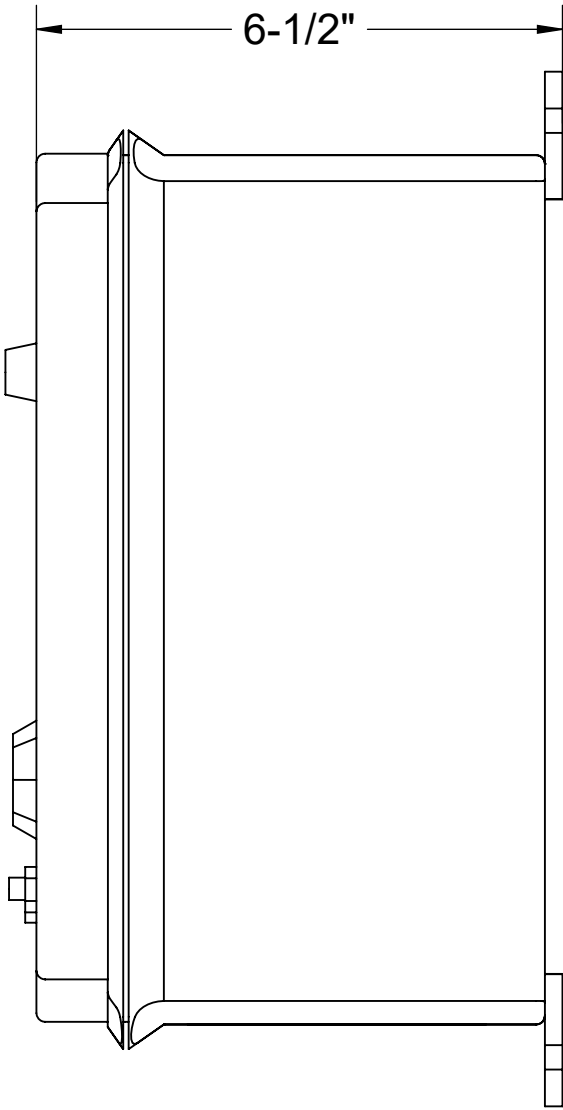


SPECIFICATIONS

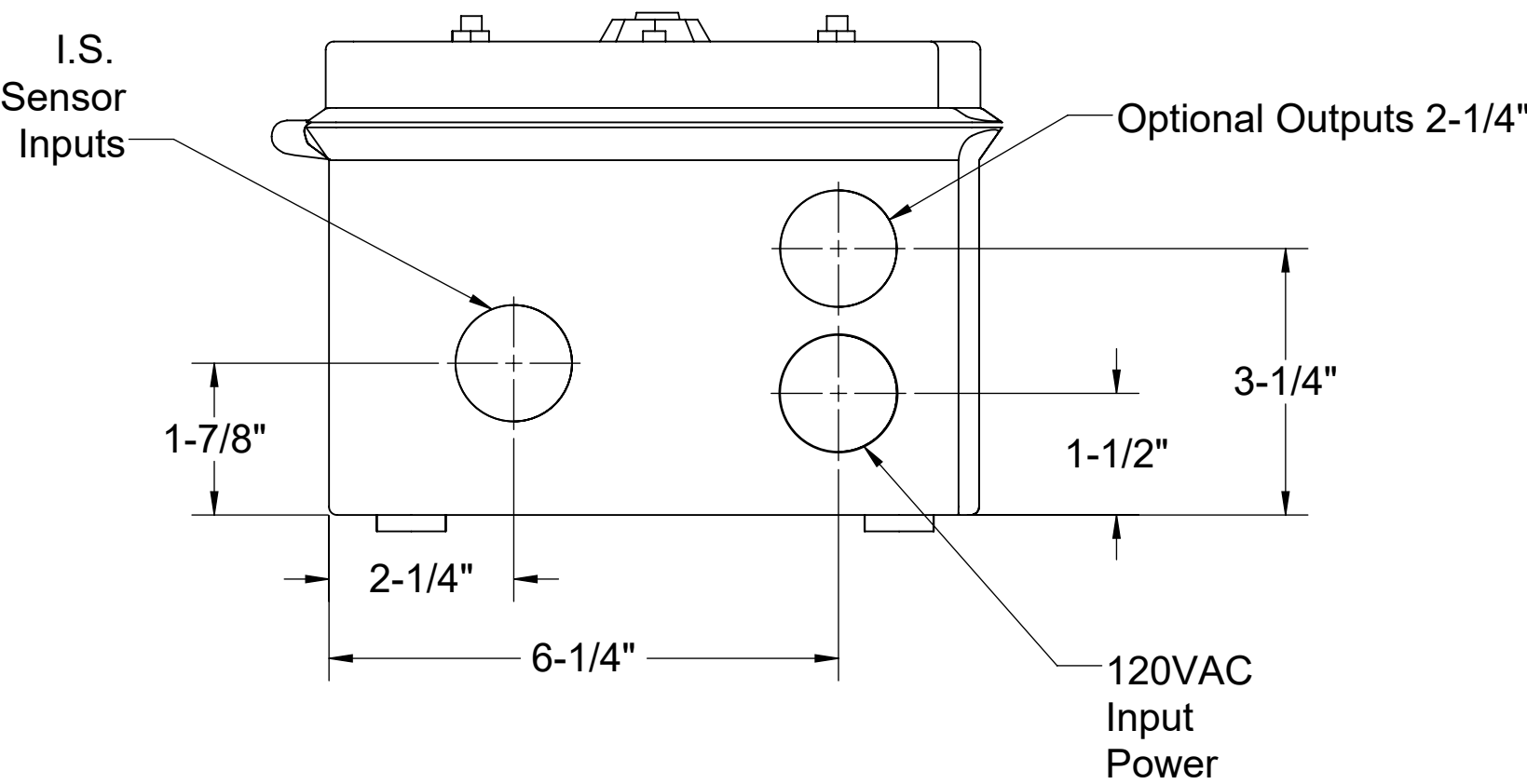
- 1. UL Listed
- 2. Provides warning of high oil level conditions with interface float.
- 3. Single phase, 120 volt, 60 hertz power required.
- 4. NEMA 4X fiberglass, corrosion resistant, weatherproof enclosure suitable for outdoor use and damp environments.
- 5. Audible Alarm Buzzer, 95dB pulsing horn with no timeout.
- 6. High Oil Light, indicates oil has accumulated below the oil interface float or the tank liquid level is below the High Oil Interface Float.
- 7. Power On light inside enclosure. Visible from the outside.
- 8. Green light indicates the power is on.
- 9. Horn off button that silences the audible alarm when pressed.
- 10. Test button that when pressed will test the system electronics.
- 11. Alarm bell stays on until reset. Light stays on until reset, even if level goes down.
- 12. Unit comes supplied with extra dry contact for connection to a building alarm system.



FRONT VIEW



LEFT VIEW



BOTTOM VIEW

MODEL NUMBER: 8056-001-01			
DESCRIPTION: SLICK STICK™ OIL LEVEL MONITORING SYSTEM FOR OS, OT, AND FLI SERIES			
DWG BY: MJ	DATE: 01/14/2022	REV: 03	ECO:

SPECIFICATION SHEET

Striem
3100 Brinkerhoff
Kansas City, KS 66115
Tel: 913-222-1500
orders@striemco.com
www.striemco.com

Made in the U.S.A

STRIEM

Installation Guidelines:

1. The Slick Stick™ interface float and alarm panel will ship separately from the tank.
2. Install the 1/2" FPT brass coupling to the end of the Slick Stick™ interface float. Thread the 1/2" MPT x socket PVC fitting into the 1/2" FPT brass coupling.
3. If the tank is to be installed above grade, or without any adjustment to the adapter, install a length of 1/2" sch. 40 PVC pipe between the bottom of the junction box and the top of the 1/2" MPT x socket PVC fitting. Choose the length from Table 1 that corresponds with the unit, and oil capacity to be monitored.
4. If the tank is buried, and the adapter will be adjusted upward and/or risers will be used, add the total upward extension dimension to the length determined from Table 1 to determine total length of 1/2" PVC pipe length. For example, assume an OS-75 is being installed below grade and requires 26" of riser extension. Assume you want the control panel to alarm when the oil capacity reaches 70% of the total oil capacity. The length of the 1/2" PVC pipe extension should be 26" (riser depth) + 10" (from Table 1) = 36".
5. Run interface float wiring through 1/2" PVC pipe and into the bottom of the junction box inside the adapter. Connect wiring to alarm panel (see wire diagram).
6. Once power is applied, the alarm will sound. Fill the tank to the active water line to silence the alarm.

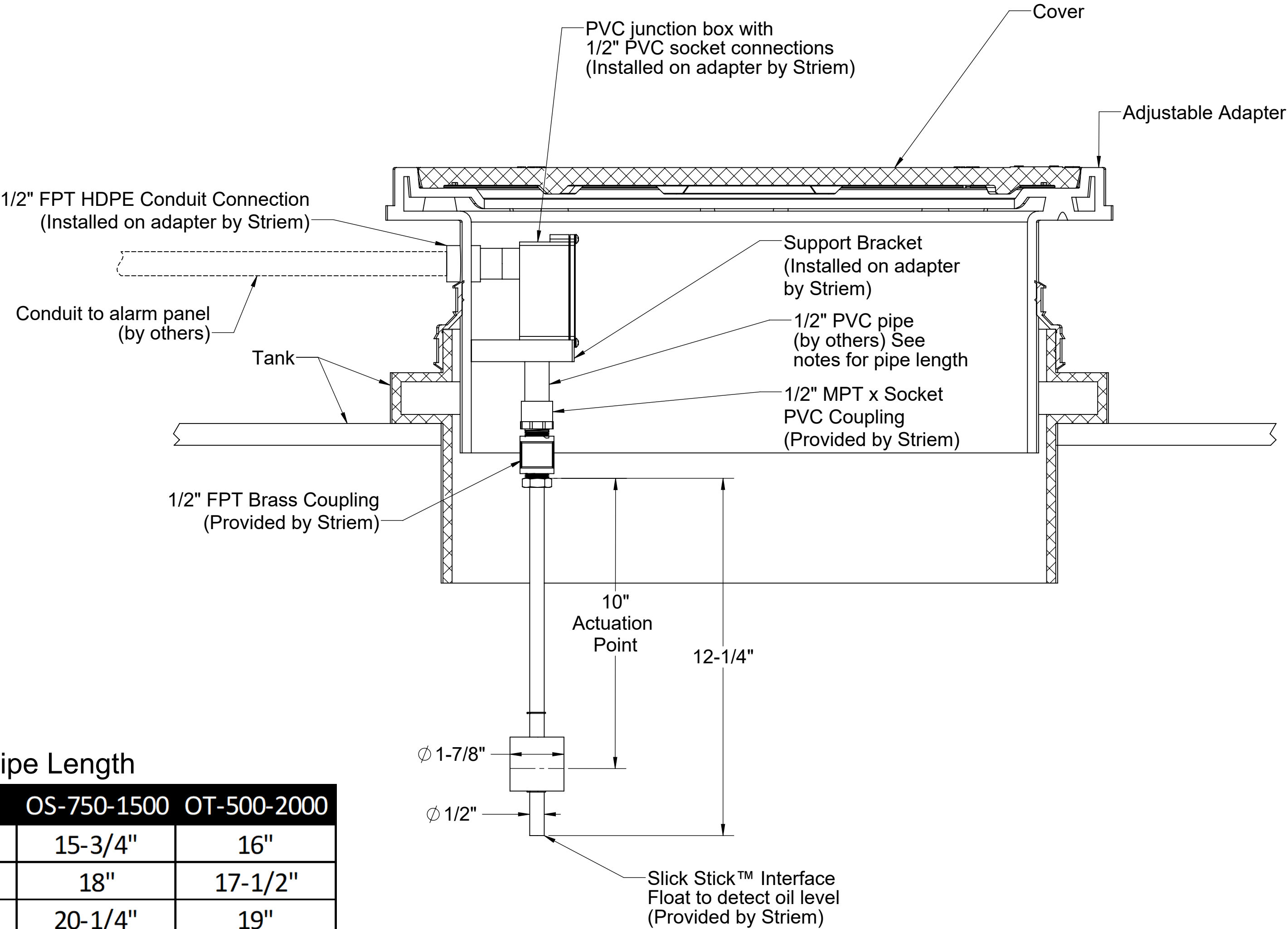


Table 1: 1/2" PVC Pipe Length

Oil Capacity	OS-50	OS-75	OS-100	OS-750-1500	OT-500-2000
50%	1-1/2"	6-5/8"	9-5/8"	15-3/4"	16"
60%	2-3/8"	8-1/4"	11-1/2"	18"	17-1/2"
70%	3-3/8"	10"	13-1/4"	20-1/4"	19"
80%	4-3/8"	12"	15"	22-1/2"	20-1/2"
90%	5-1/2"	13-7/8"	18-3/4"	24-1/2"	22"

PROPRIETARY AND CONFIDENTIAL

THE INFORMATION CONTAINED IN THIS DRAWING IS THE SOLE PROPERTY OF STRIEM, LLC. ANY REPRODUCTION IN PART OR AS A WHOLE WITHOUT THE WRITTEN PERMISSION OF STRIEM, LLC. IS PROHIBITED.

DESCRIPTION:

SLICK STICK™
INTERFACE FLOAT
INSTALLATION GUIDELINES

DWG BY: MJ DATE: 01/14/2022 REV: 04 ECO:

Striem
3100 Brinkerhoff
Kansas City, KS 66115
Tel: 913-222-1500
orders@striemco.com
www.striemco.com

Made in the U.S.A

