

SPECIFICATIONS

1. 6" Plain End inlet/outlet shown, 3" Plain End vents, C24-H cover standard.
2. Liquid capacity: 500 Gallons (66 cu.ft.).
3. Flammable liquid capacity: 177 Gallons.
4. Solids capacity: 259 Gallons.
5. Unit weight w/ standard cover: 800 lbs.; w/ cast iron cover: 860 lbs.
6. Maximum operating temperature 140°F continuous.

NOTES

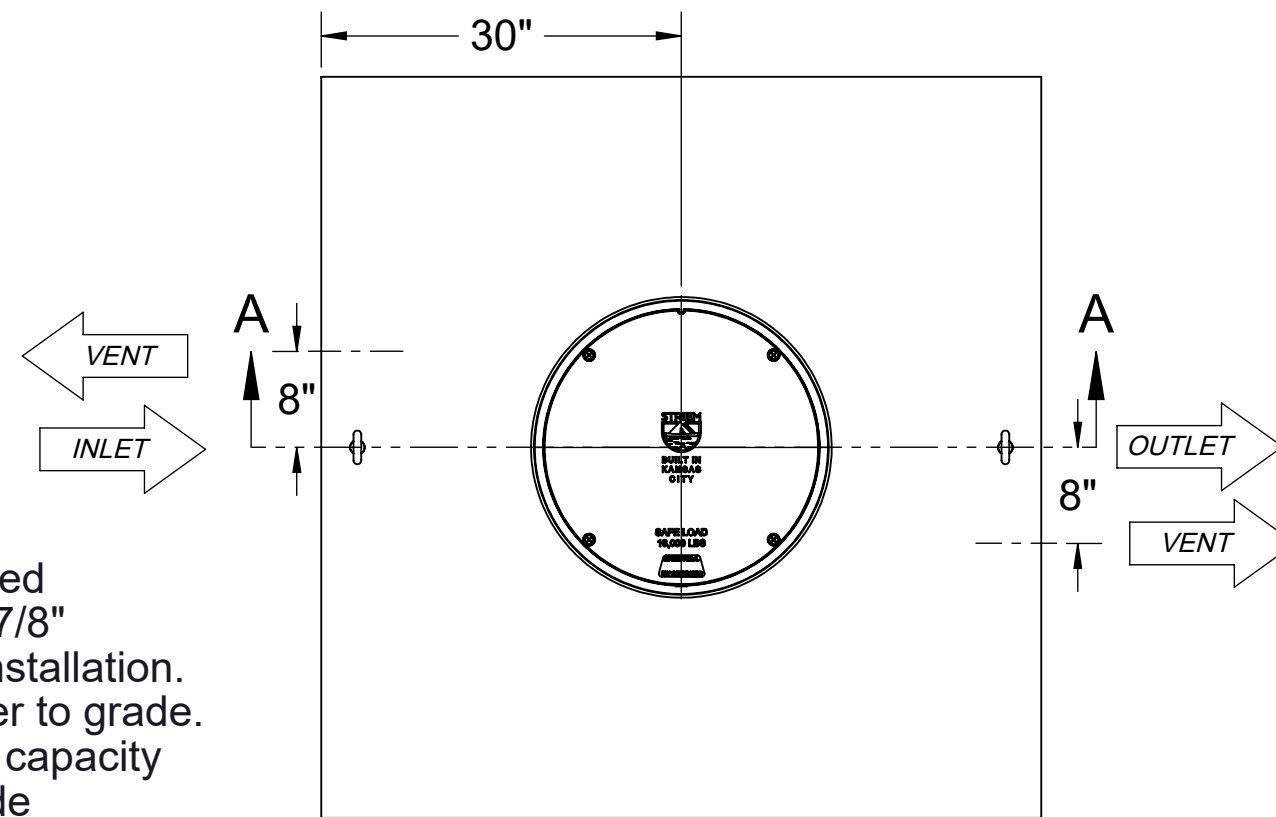
1. For gravity drainage applications only.
2. Do not use for pressure applications.
3. Cover placement allows full access to tank for proper maintenance.
4. Lifting lug set for easy install.
5. For below-grade installation only.

ENGINEER SPECIFICATION GUIDE

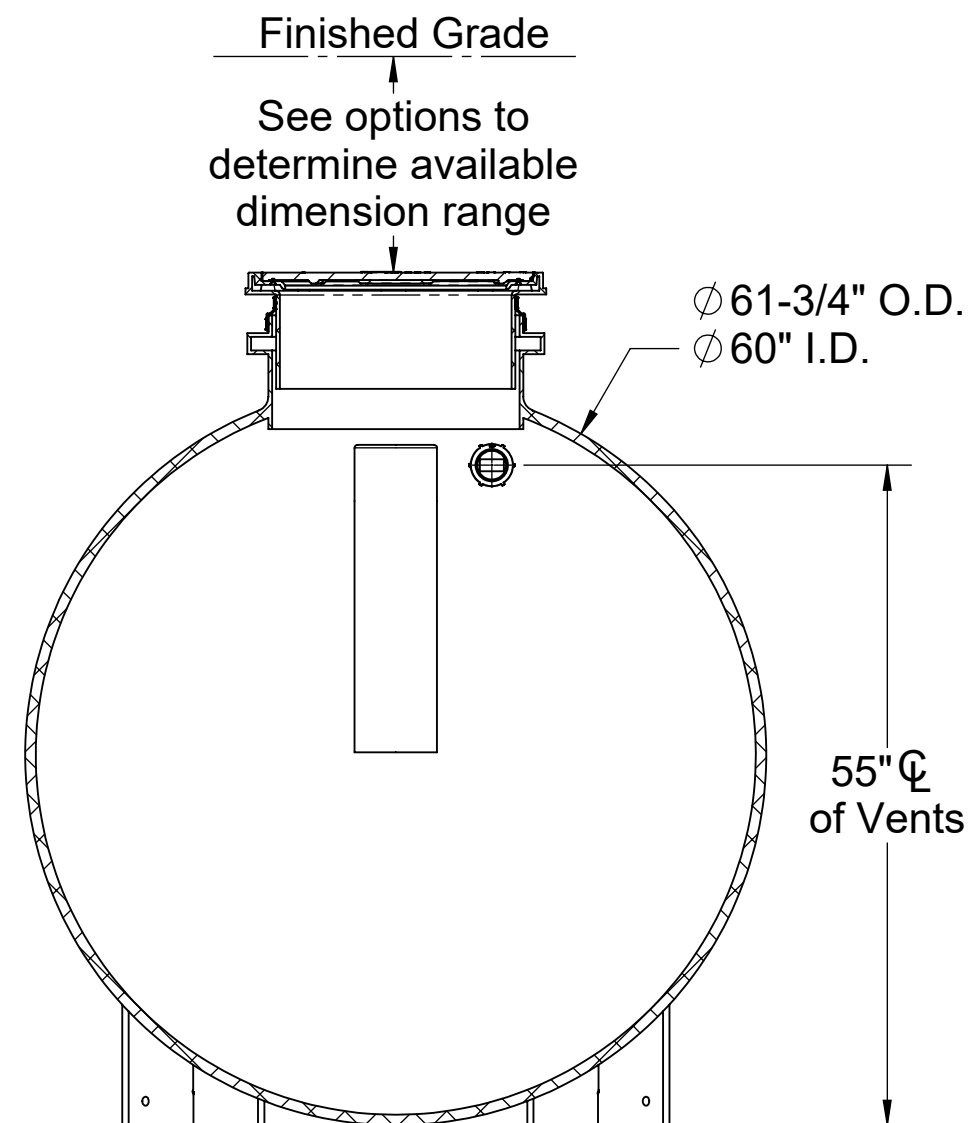
Striem flammable liquid interceptor model FLI-500 shall be lifetime guaranteed and made in the USA. Interceptor shall be constructed of polyethylene with 7/8" nominal wall thickness. Interceptor shall be manufactured for below-grade installation. Field-adjustable riser system is available as an option to bring manhole cover to grade. Interceptor liquid holding capacity shall be 500 gallons and flammable liquid capacity shall be 177 gallons. Solids capacity shall be 259 gallons. Cover shall provide water/gas-tight seal and have a maximum 16,000 lbs. load capacity.

THIRD PARTY STRUCTURAL ANALYSIS

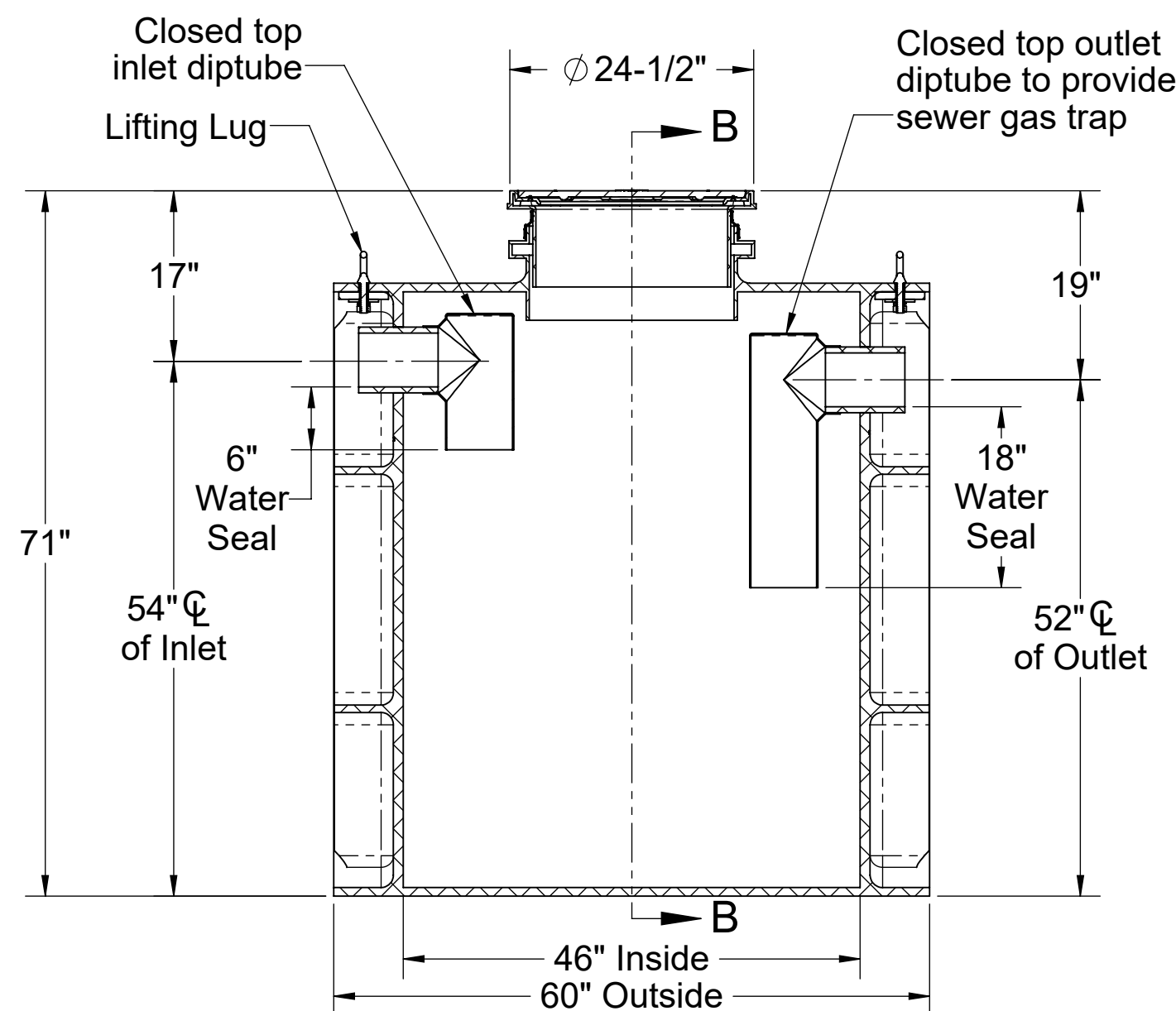
The structural design of the FLI-500 has been approved and stamped by a third-party structural engineer for direct burial in accordance with Striem's installation instructions.



TOP VIEW

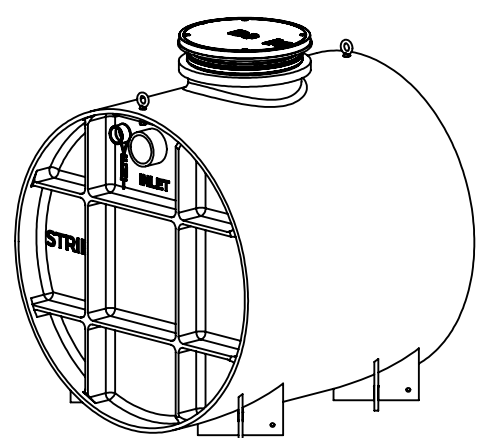


SECTION B-B



SECTION A-A

OPTIONS	
Connection Options (Plain End Only)	
Size <input type="checkbox"/> 4" <input type="checkbox"/> 6" <input type="checkbox"/> 8"	<div style="border: 1px solid black; border-radius: 50%; padding: 5px; display: inline-block;"> SELECTION REQUIRED </div>
Riser Options	
From Factory: Up to 5"	
<input type="checkbox"/> Up to 24": SR24 <input type="checkbox"/> Up to 39": LR24 <input type="checkbox"/> Up to 43": SR24 (2) <input type="checkbox"/> Up to 58": SR24 + LR24 <input type="checkbox"/> Up to 72": LR24 (2) <input type="checkbox"/> Up to 90": SR24 + LR24 (2) <input type="checkbox"/> Up to 106": LR24 (3)	
- OR -	
<input type="checkbox"/> CPRK: 11" - 106" (See specification for more detail.)	
Additional Options	
<input type="checkbox"/> HDK-8: High Water Table Hold Down Kit <input type="checkbox"/> C24-HP: H2O Rated Pickable Cast Iron Cover <input type="checkbox"/> SS: Slick Stick™ Oil Level Monitoring Solution*	
*Monitoring system will raise cover by 3"	



**PO IS NON-CANCELABLE
ORDER IS NON-RETURNABLE**

PROPRIETARY AND CONFIDENTIAL
 THE INFORMATION CONTAINED IN THIS DRAWING IS THE SOLE PROPERTY OF STRIEM, LLC.
 ANY REPRODUCTION IN PART OR AS A WHOLE WITHOUT THE WRITTEN PERMISSION OF STRIEM, LLC. IS PROHIBITED.

MODEL NUMBER:	FLI-500
DESCRIPTION:	POLYETHYLENE FLAMMABLE LIQUID INTERCEPTOR 500 GALLON CAPACITY UNRATED
DWG BY:	ENG
DATE:	8/25/2023
REV:	1

SPECIFICATION SHEET

Striem
 Kansas City, KS
 Tel: 913-222-1500
 orders@striemco.com
 www.striemco.com

Made in the U.S.A

