

SPECIFICATIONS

- 1. 6" Plain End outlet shown.
- 2. Liquid capacity: 500 gallons (66 cu. ft.).
- 3. Solids capacity: 400 gallons.
- 4. Basket capacity: 7 Gallons.
- 5. Unit weight: 900 lbs.
- 6. Maximum operating temperature 140 °F continuous.

NOTES

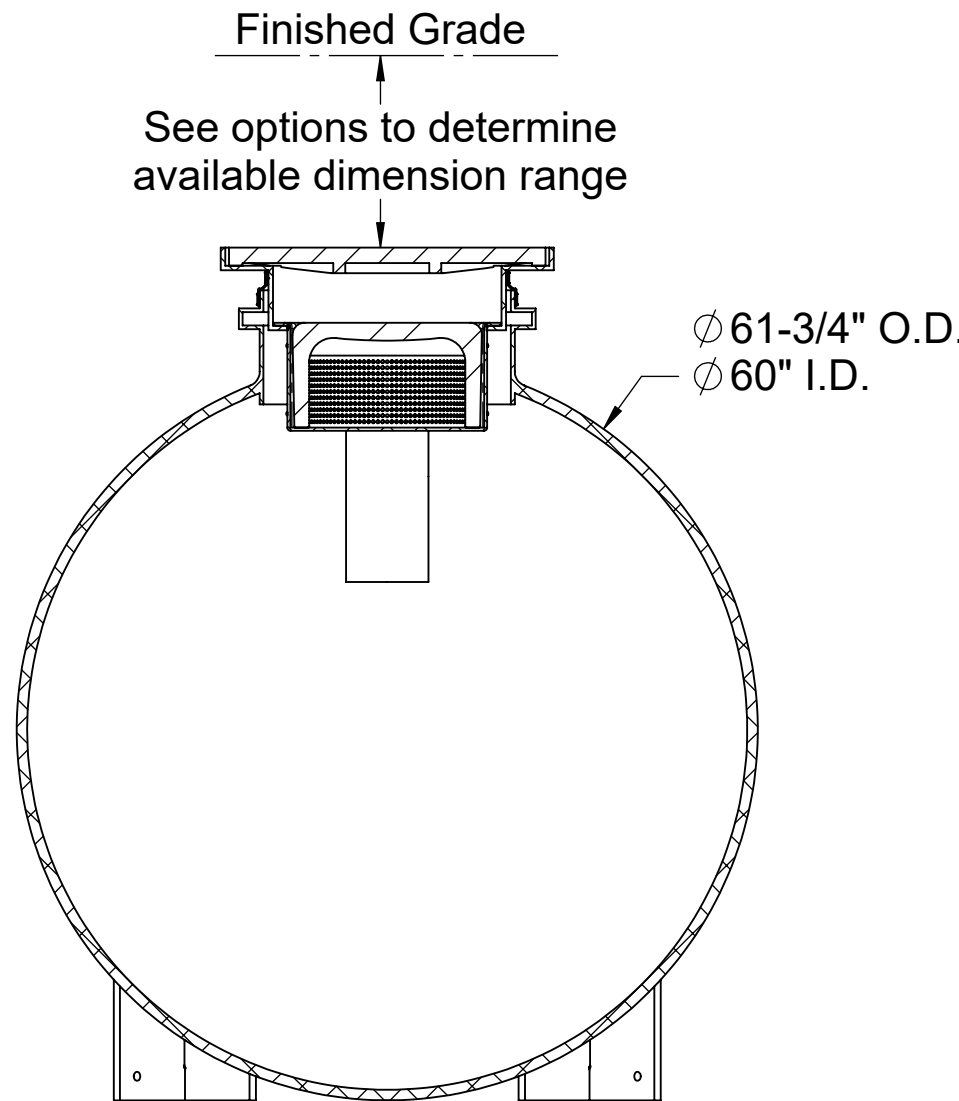
- 1. For gravity drainage applications only.
- 2. Do not use for pressure applications.
- 3. Cover placement allows full access to tank for proper maintenance.
- 4. Lifting lug set for easy install.

ENGINEER SPECIFICATION GUIDE

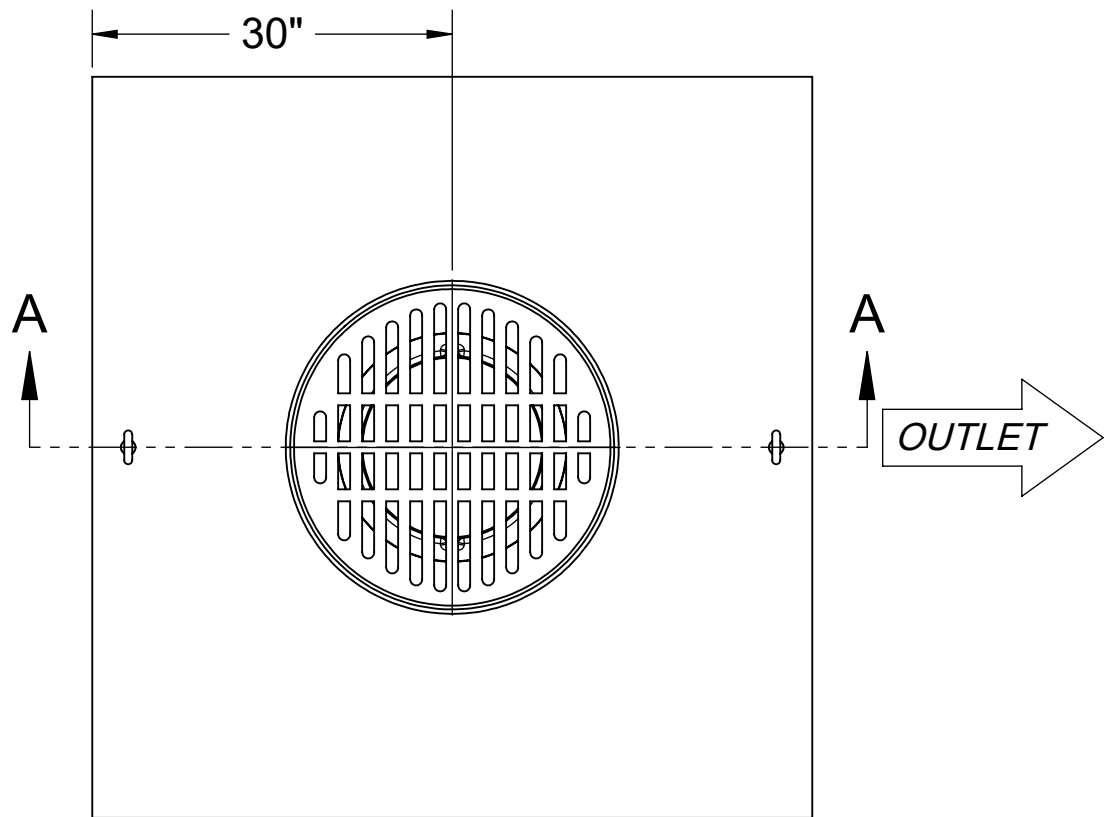
Striem solids interceptor model CB-500-G shall be lifetime guaranteed and made in the USA. Interceptor shall be constructed of polyethylene with 7/8" nominal wall thickness. Interceptor shall be manufactured for below-grade installation. Field-adjustable riser system is available as an option to bring manhole cover to grade. Interceptor liquid holding capacity shall be 500 gallons. Interceptor solids capacity shall be 400 gallons. BCB-7 basket solids capacity shall be 7 gallons. Cover shall be H20 rated cast iron grate.

THIRD PARTY STRUCTURAL ANALYSIS

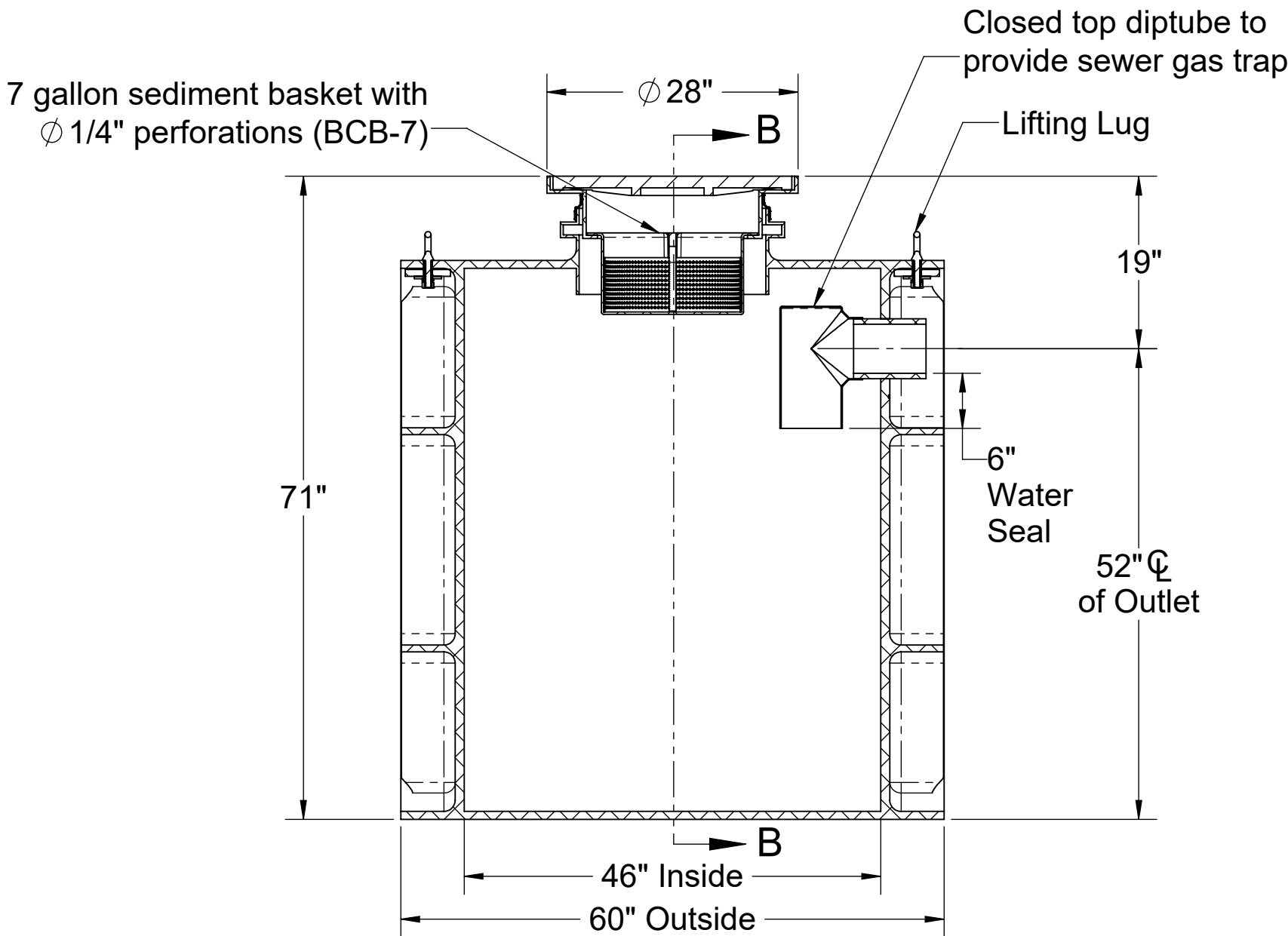
The structural design of the CB-500-G has been approved and stamped by a third-party structural engineer for direct burial in accordance with Striem's installation instructions.



SECTION B-B



TOP VIEW



SECTION A-A

OPTIONS

Connection Options

| Outlet                               | Size                        |
|--------------------------------------|-----------------------------|
| <input type="checkbox"/> Plain End   | <input type="checkbox"/> 4" |
| <input type="checkbox"/> Male Thread | <input type="checkbox"/> 6" |

SELECTION  
REQUIRED

Riser Options

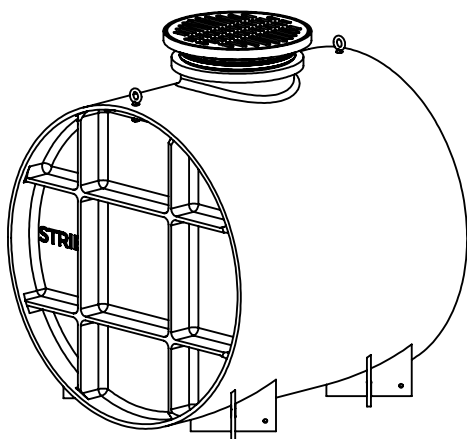
From Factory: 0" - 2"

- ☐ 5" - 24": SR24
- ☐ Up to 39": LR24
- ☐ Up to 43": SR24 (2)
- ☐ Up to 58": SR24 + LR24
- ☐ Up to 72": LR24 (2)
- ☐ Up to 90": SR24 + LR24 (2)
- ☐ Up to 106": LR24 (3)

\*If in the range of 2" - 5", contact Striem for a custom solution.

Additional Options

- ☐ HDK-8: High Water Table Hold Down Kit



PO IS NON-  
CANCELABLE  
ORDER IS NON-  
RETURNABLE

PROPRIETARY AND CONFIDENTIAL  
THE INFORMATION CONTAINED IN THIS DRAWING IS THE SOLE PROPERTY OF STRIEM, LLC.  
ANY REPRODUCTION IN PART OR AS A WHOLE WITHOUT THE WRITTEN PERMISSION OF STRIEM, LLC. IS PROHIBITED.

MODEL NUMBER: CB-500-G

DESCRIPTION:

POLYETHYLENE CATCH BASIN  
WITH H20 RATED CAST IRON GRATE  
AND BCB-7 SEDIMENT BASKET

DWG BY: ENG DATE: 8/25/2023 REV: 2

SPECIFICATION SHEET

Striem  
Kansas City, KS  
Tel: 913-222-1500  
orders@striemco.com  
www.striemco.com

Made in the U.S.A

