

**SPECIFICATIONS**

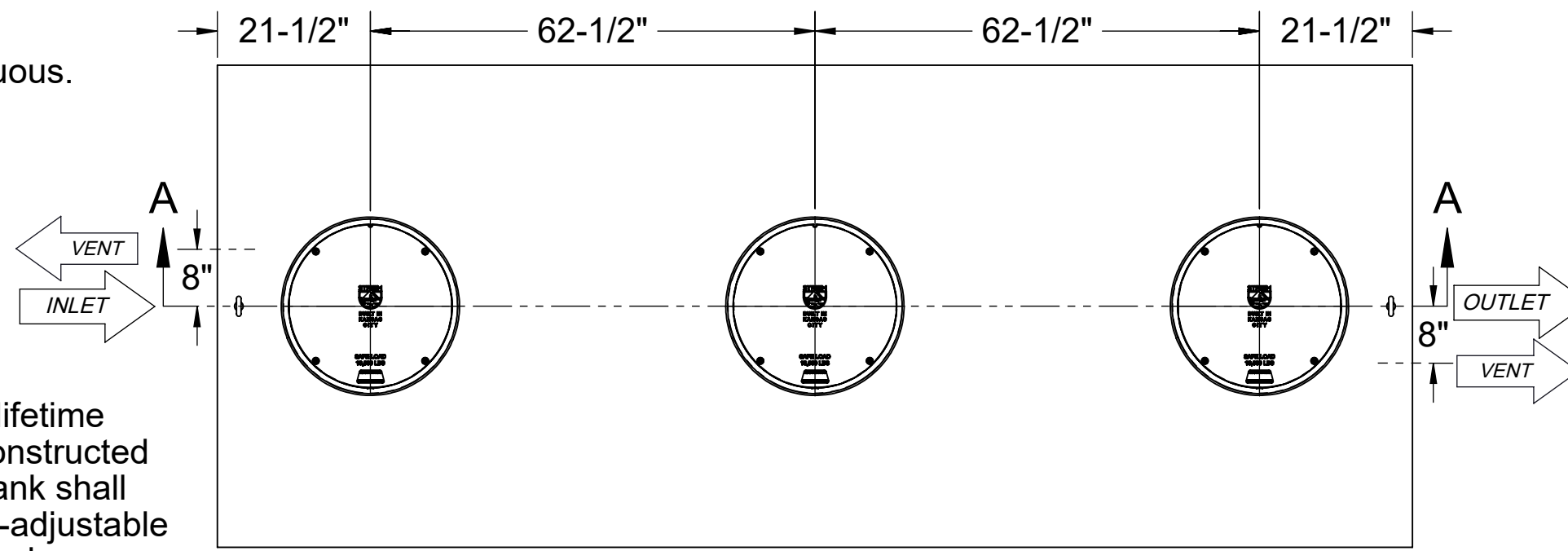
1. 6" Plain End inlet/outlet shown, 3" Plain End vents standard.
2. Liquid capacity: 2000 gallons (267 cu. ft.).
3. Unit weight: 1820 lbs.
4. Maximum operating temperature 140°F continuous.

**NOTES**

1. For gravity drainage applications only.
2. Do not use for pressure applications.
3. Cover placement allows full access to tank for proper maintenance.
4. Lifting lug set for easy install.

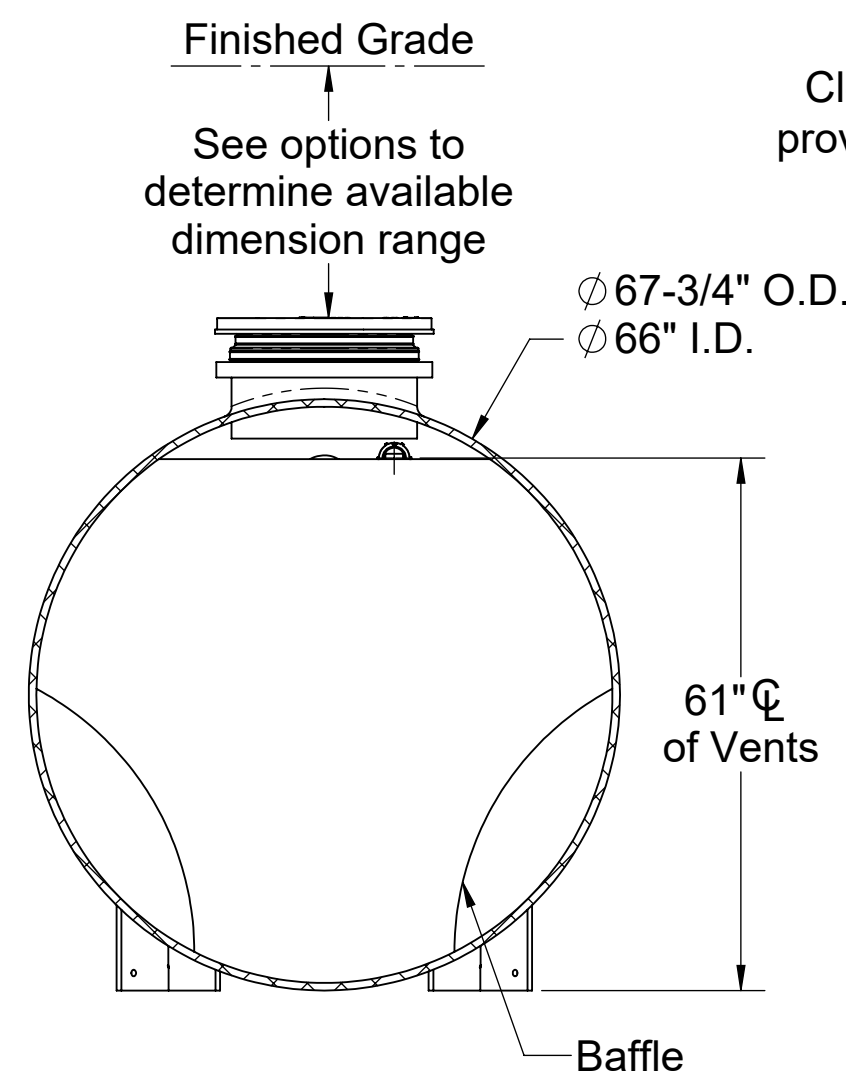
**ENGINEER SPECIFICATION GUIDE**

Striem neutralization tank model LB-2000 shall be lifetime guaranteed and made in the USA. Tank shall be constructed of polyethylene with 7/8" nominal wall thickness. Tank shall be manufactured for below-grade installation. Field-adjustable riser system is available as an option to bring manhole covers to grade. Tank liquid holding capacity shall be 2000 gallons. Covers shall provide water/gas-tight seal and have a maximum 16,000 lbs. load capacity.

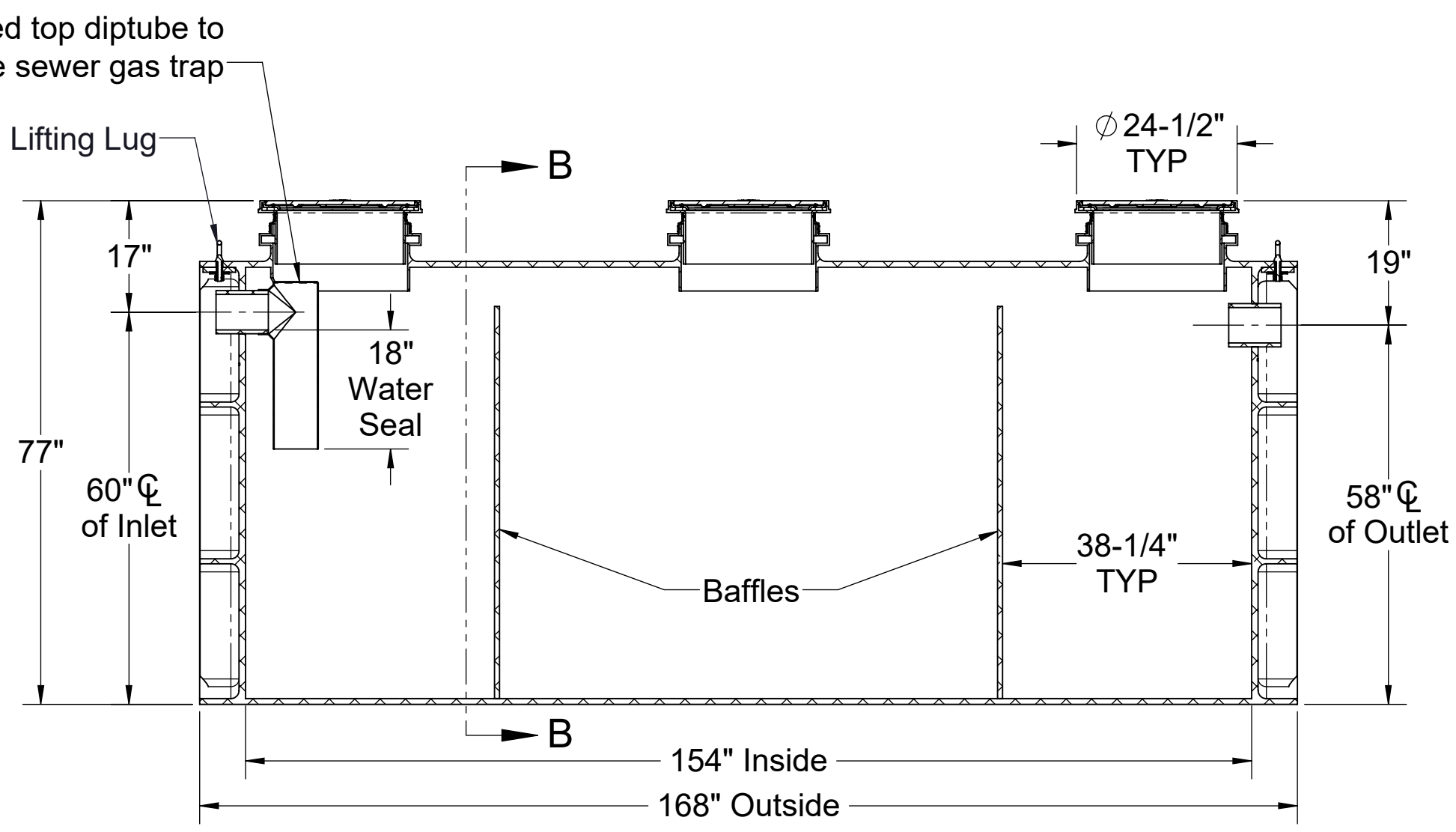


**TOP VIEW**

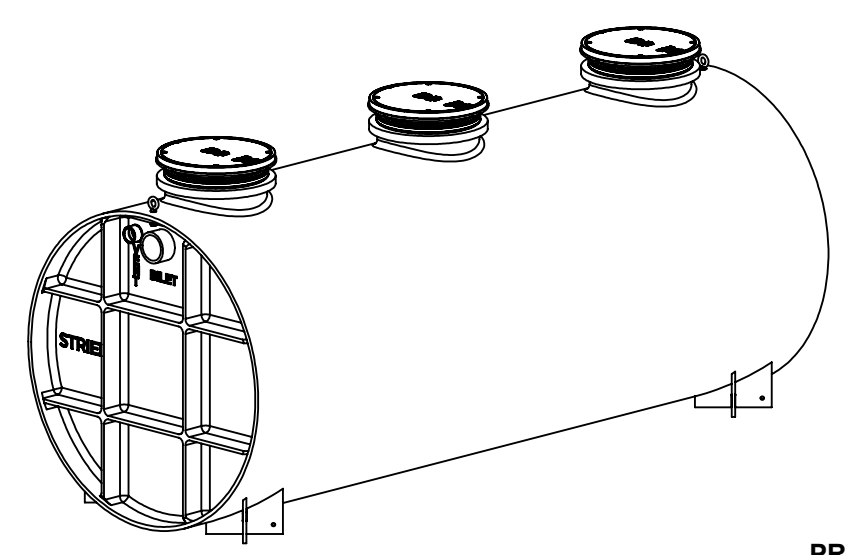
OPTIONS	
<b>Connection Options (Plain End Only)</b>	
<b>Inlet / Outlet</b>	SELECTION REQUIRED
<input type="checkbox"/> 4"	
<input type="checkbox"/> 6"	
<input type="checkbox"/> 8"	
<b>Riser Options</b>	
<b>From Factory:</b> Up to 5"	
<input type="checkbox"/> Up to 24": <b>SR24</b> (3)	
<input type="checkbox"/> Up to 39": <b>LR24</b> (3)	
<input type="checkbox"/> Up to 43": <b>SR24</b> (6)	
<input type="checkbox"/> Up to 58": <b>SR24</b> (3) + <b>LR24</b> (3)	
<input type="checkbox"/> Up to 72": <b>LR24</b> (6)	
<input type="checkbox"/> Up to 90": <b>SR24</b> (3) + <b>LR24</b> (6)	
<input type="checkbox"/> Up to 106": <b>LR24</b> (9)	
<b>- OR -</b>	
<input type="checkbox"/> <b>CPRK</b> (3): 11" - 106" (See specification for more detail.)	
<b>Additional Options</b>	
<input type="checkbox"/> <b>CC-1:</b> Command Center pH Monitoring Package	
<input type="checkbox"/> <b>SPK-A:</b> Above-Grade Sensor Placement Kit*	
<input type="checkbox"/> <b>SPK-B:</b> Below-Grade Sensor Placement Kit*	
<input type="checkbox"/> <b>HDK-7:</b> High Water Table Hold Down Kit	
<input type="checkbox"/> <b>Limestone:</b> 90%+ Calcium Carbonate (25,500 lbs.)	
*Required with CC-1	



**SECTION B-B**



**SECTION A-A**



PO IS NON-CANCELABLE  
ORDER IS NON-RETURNABLE

<b>MODEL NUMBER:</b>	LB-2000
<b>DESCRIPTION:</b>	LAB BASIN™ POLYETHYLENE NEUTRALIZATION TANK 2000 GALLON CAPACITY
<b>DWG BY:</b> ENG	<b>DATE:</b> 8/22/2023
<b>REV:</b> 1	

SPECIFICATION SHEET	
Striem Kansas City, KS Tel: 913-222-1500 orders@striemco.com www.striemco.com	
Made in the U.S.A	

PROPRIETARY AND CONFIDENTIAL  
THE INFORMATION CONTAINED IN THIS DRAWING IS THE SOLE PROPERTY OF STRIEM, LLC.  
ANY REPRODUCTION IN PART OR AS A WHOLE WITHOUT THE WRITTEN PERMISSION OF STRIEM, LLC. IS PROHIBITED.