

SPECIFICATIONS

1. 6" Plain End inlet/outlet shown, 4" Plain End vents, C24-H cover standard.
2. Max flow rate: 314 GPM.
3. Liquid capacity: 475 gallons (63.5 cu. ft.).
4. Oil capacity: 86 gallons.
5. Solids capacity: 320 gallons.
6. Unit weight: 845 lbs.
7. Maximum operating temperature: 140°F continuous.

NOTES

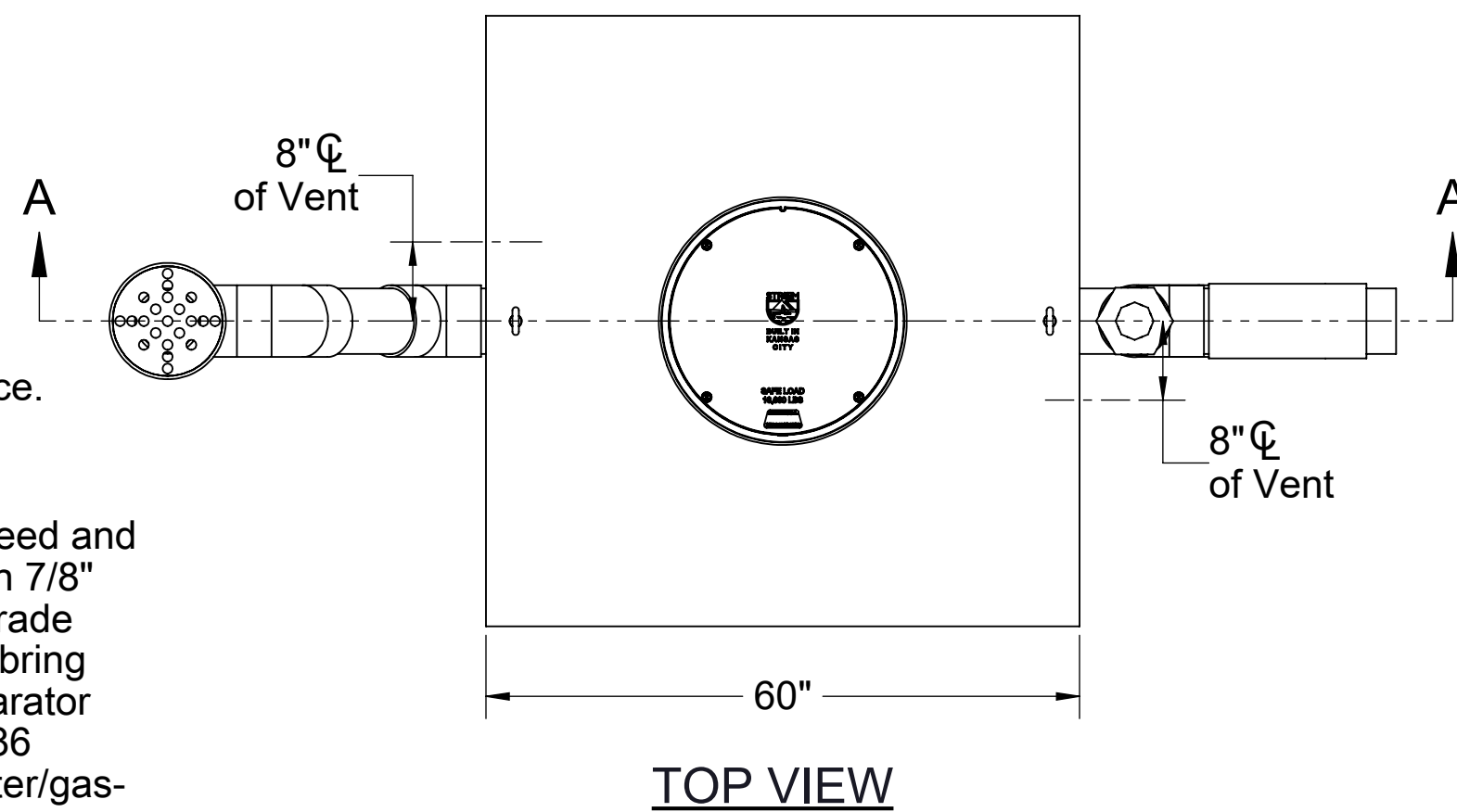
1. For gravity drainage applications only.
2. Do not use for pressure applications.
3. Cover placement allows full access to tank for proper maintenance.
4. Lifting lug set for easy install.

ENGINEER SPECIFICATION GUIDE

Striem oil separator model OS-500-OMAHA shall be lifetime guaranteed and made in the USA. Separator shall be constructed of polyethylene with 7/8" nominal wall thickness. Separator shall be manufactured for below-grade installation. Field-adjustable riser system is available as an option to bring manhole cover to grade. Separator flow rate shall be 314 GPM. Separator liquid holding capacity shall be 475 gallons and oil capacity shall be 86 gallons. Solids capacity shall be 320 gallons. Cover shall provide water/gas-tight seal and have a maximum 16,000 lbs. load capacity.

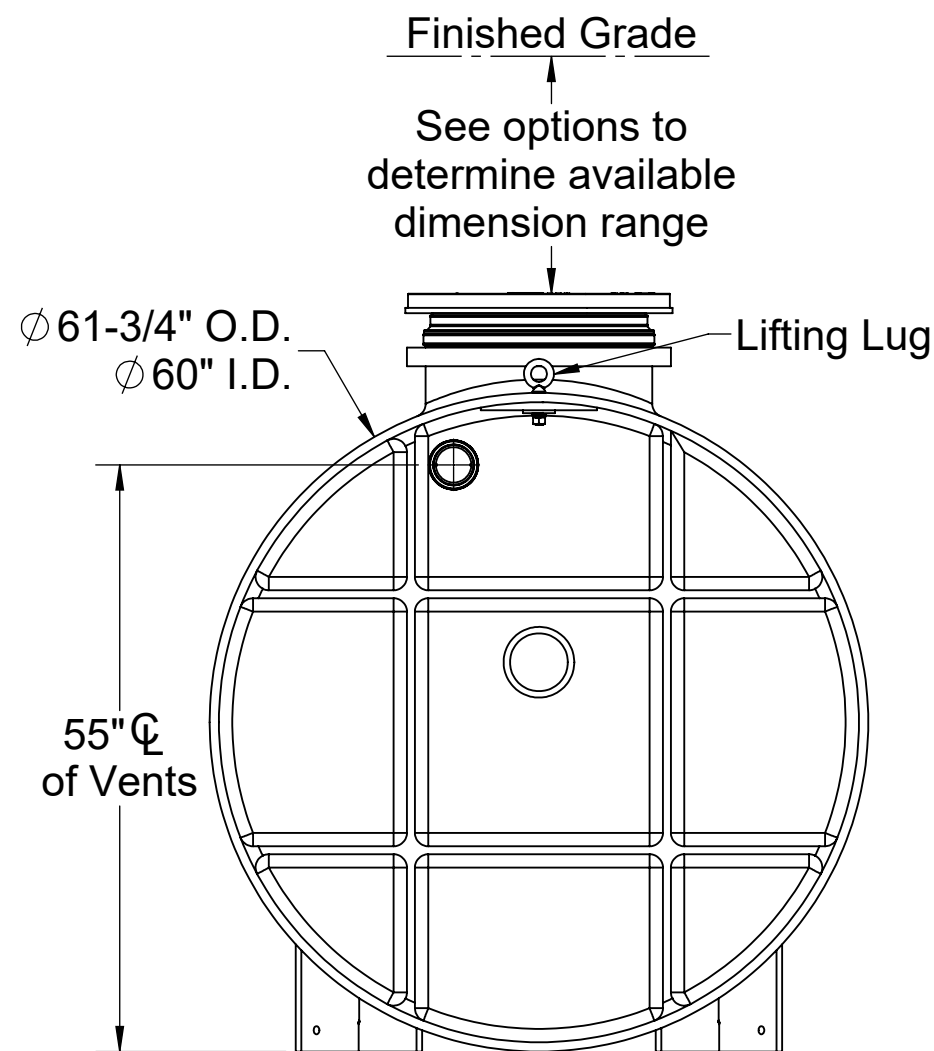
THIRD PARTY STRUCTURAL ANALYSIS

The structural design of the OS-500-OMAHA has been approved and stamped by a third-party structural engineer for direct burial in accordance with Striem's installation instructions.

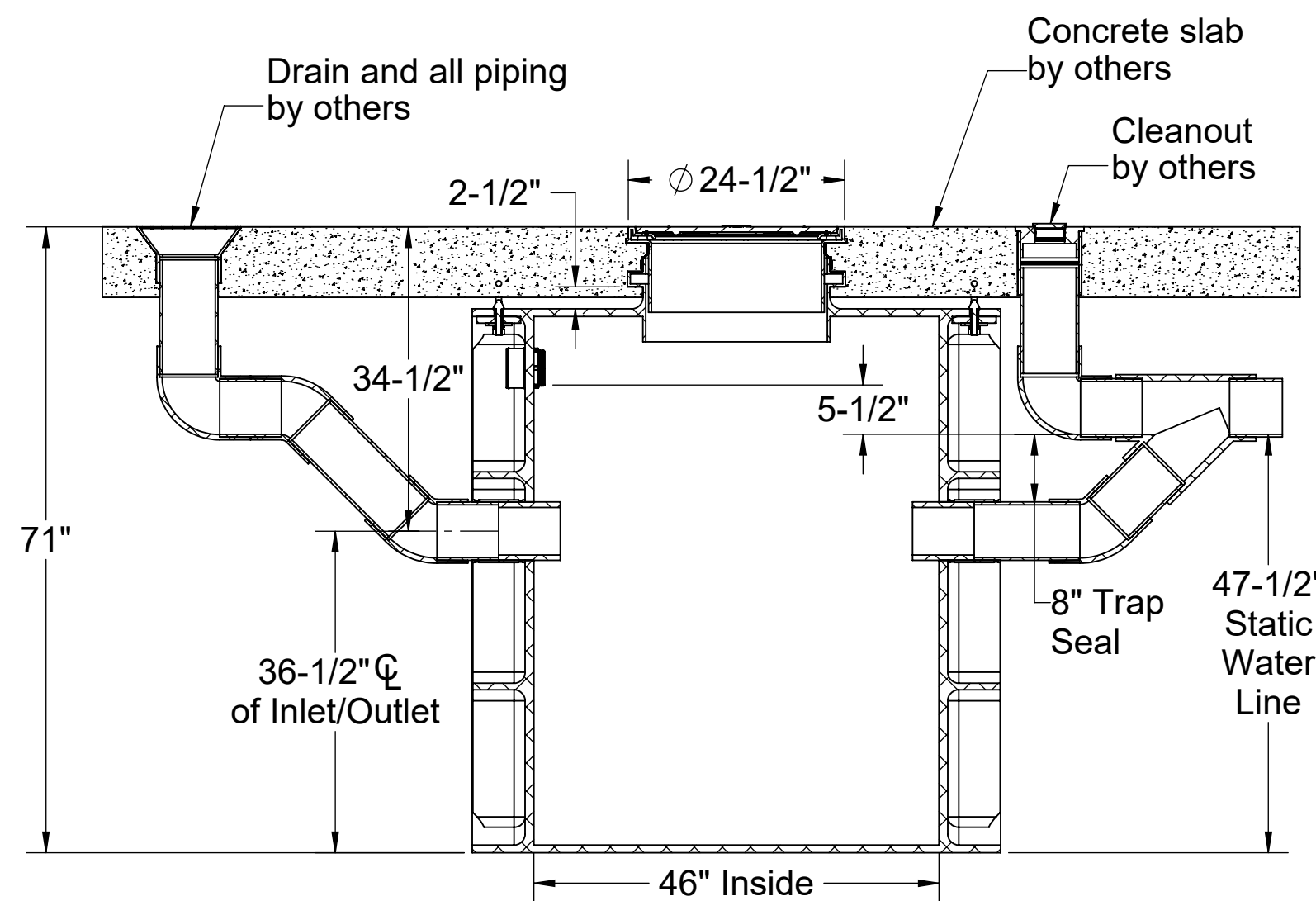


TOP VIEW

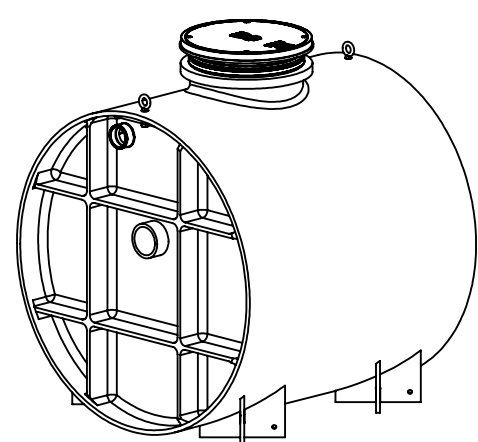
OPTIONS	
Connection Options	
Inlet / Outlet	Size
<input type="checkbox"/> Plain End	<input type="checkbox"/> 4"
<input type="checkbox"/> Male Thread	<input type="checkbox"/> 6"
SELECTION REQUIRED	
Riser Options	
From Factory: Up to 5"	
<input type="checkbox"/> Up to 24": SR24 (3)	
<input type="checkbox"/> Up to 39": LR24 (3)	
<input type="checkbox"/> Up to 43": SR24 (6)	
<input type="checkbox"/> Up to 58": SR24 (3) + LR24 (3)	
<input type="checkbox"/> Up to 72": LR24 (6)	
<input type="checkbox"/> Up to 90": SR24 (3) + LR24 (6)	
<input type="checkbox"/> Up to 106": LR24 (9)	
- OR -	
<input type="checkbox"/> CPRK (3): 11" - 106" (See specification for more detail.)	
Additional Options	
<input type="checkbox"/> HDK-8 : High Water Table Hold Down Kit	
<input type="checkbox"/> C24-HP : H2O Rated Pickable Cast Iron Cover	
<input type="checkbox"/> CS3 : Clean Sweep Coalescing Media*	
*Clean Sweep Coalescing Media not compatible with CPRK	



END VIEW



SECTION A-A



PO IS NON-CANCELABLE
ORDER IS NON-RETURNABLE

MODEL NUMBER:	OS-500-OMAHA
DESCRIPTION:	OMAHA TYPE 1 & 2 INTERCEPTOR
DWG BY:	ENG
DATE:	8/25/2023
REV:	2

SPECIFICATION SHEET

Striem
Kansas City, KS
Tel: 913-222-1500
orders@striemco.com
www.striemco.com

Made in the U.S.A

