

SPECIFICATIONS

1. 6" Plain End inlet/outlet shown, 4" Plain End vents, C24-H cover standard.
2. Max flow rate: 314 GPM.
3. Liquid capacity: 475 gallons (63.5 cu. ft.).
4. Oil capacity: 86 gallons.
5. Solids capacity: 320 gallons.
6. Unit weight: 845 lbs.
7. Maximum operating temperature: 140°F continuous.

NOTES

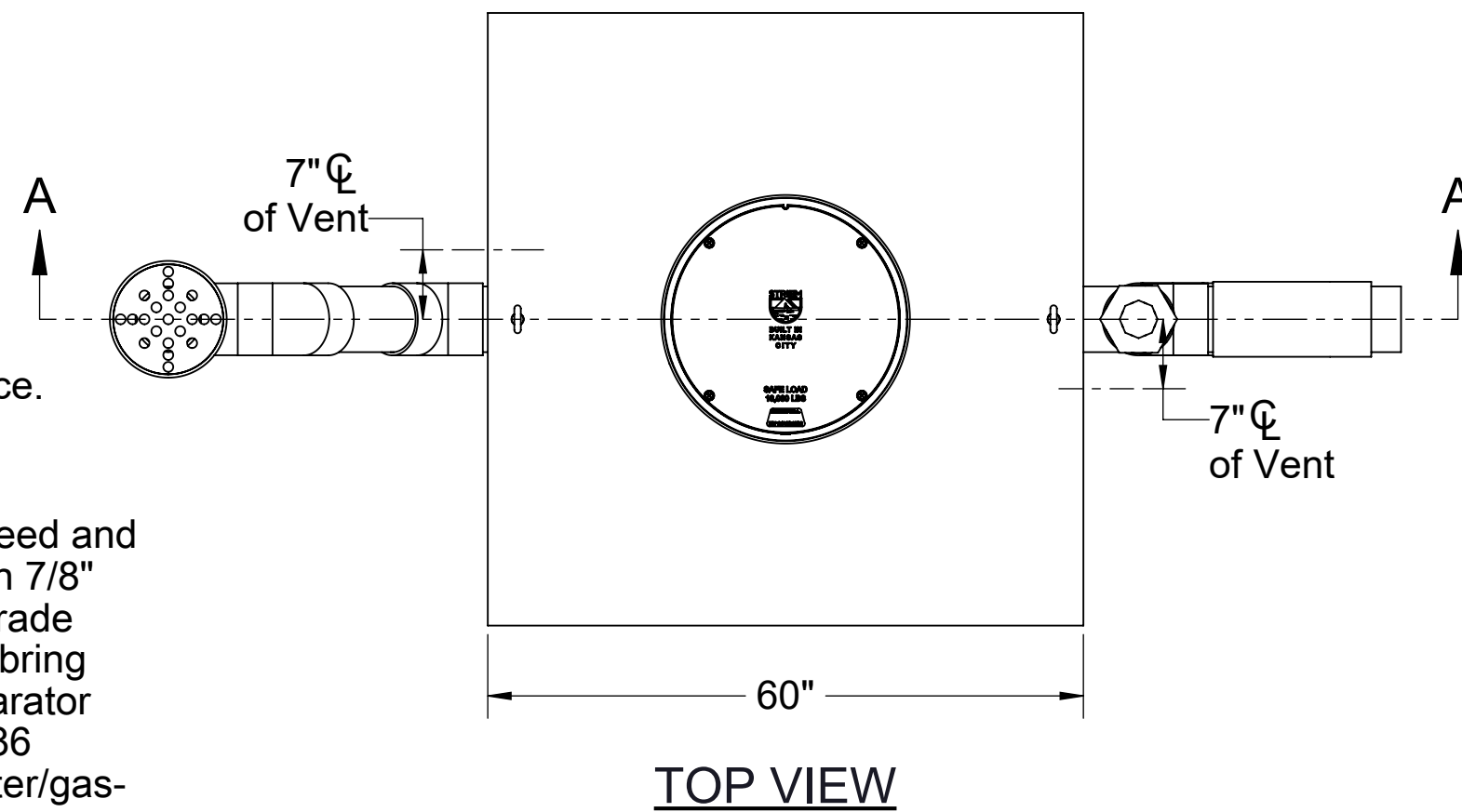
1. For gravity drainage applications only.
2. Do not use for pressure applications.
3. Cover placement allows full access to tank for proper maintenance.
4. Lifting lug set for easy install.

ENGINEER SPECIFICATION GUIDE

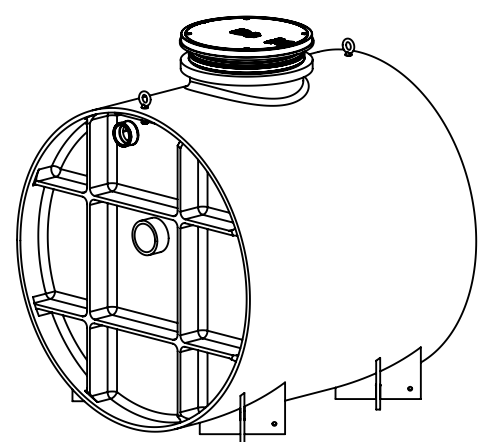
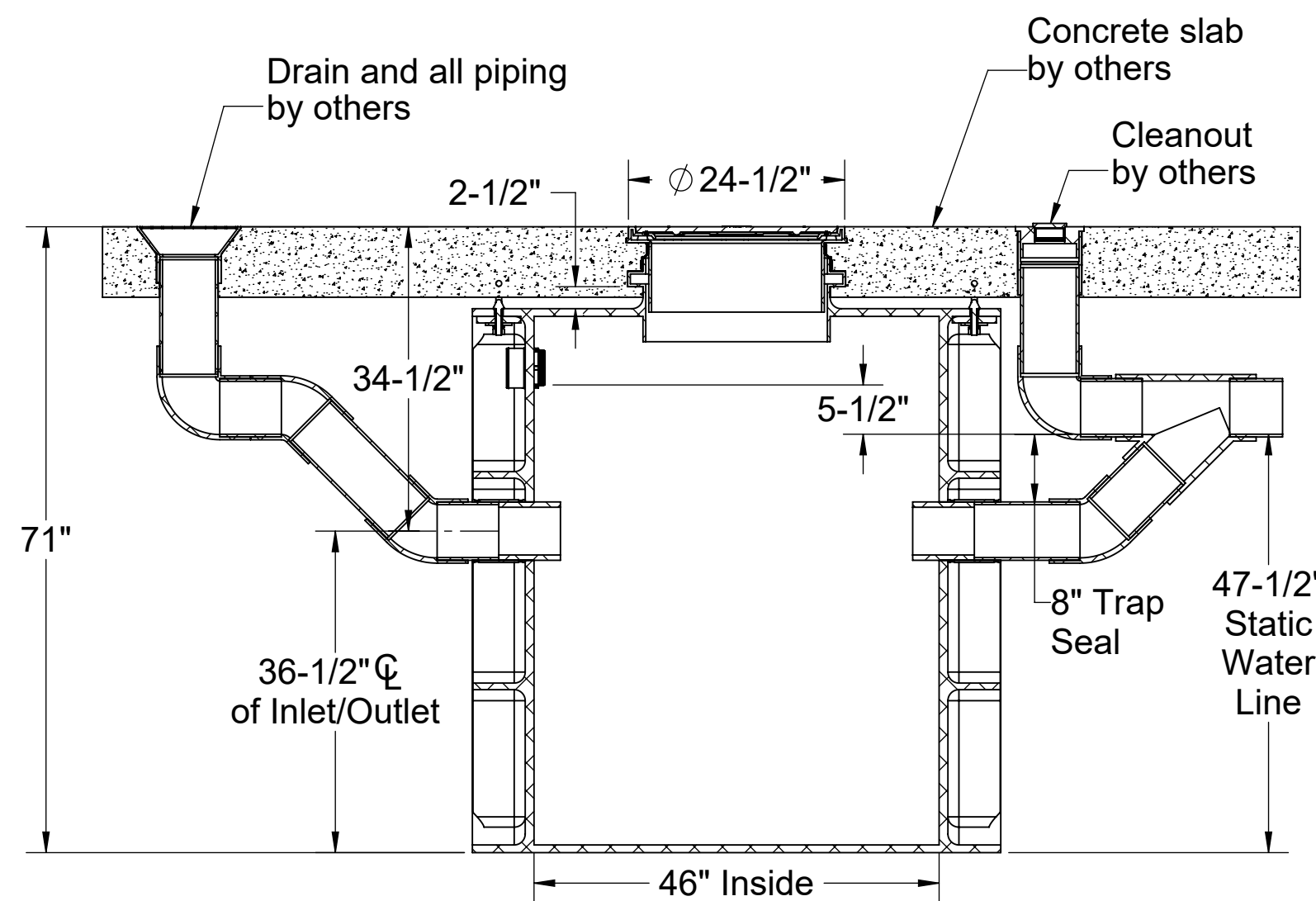
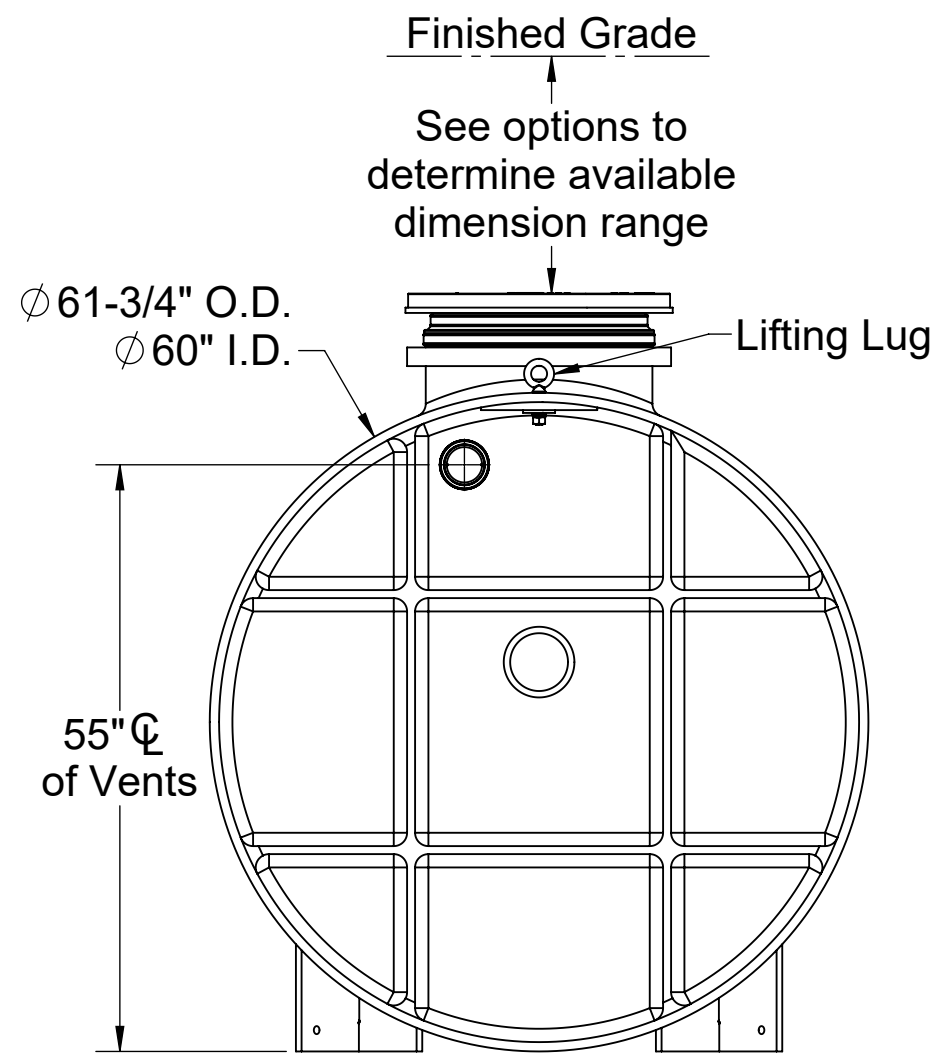
Striem oil separator model OS-500-OMAHA shall be lifetime guaranteed and made in the USA. Separator shall be constructed of polyethylene with 7/8" nominal wall thickness. Separator shall be manufactured for below-grade installation. Field-adjustable riser system is available as an option to bring manhole cover to grade. Separator flow rate shall be 314 GPM. Separator liquid holding capacity shall be 475 gallons and oil capacity shall be 86 gallons. Solids capacity shall be 320 gallons. Cover shall provide water/gas-tight seal and have a maximum 16,000 lbs. load capacity.

THIRD PARTY STRUCTURAL ANALYSIS

The structural design of the OS-500-OMAHA has been approved and stamped by a third-party structural engineer for direct burial in accordance with Striem's installation instructions.



OPTIONS	
Connection Options (Plain End Only)	
Inlet / Outlet	SELECTION REQUIRED
<input type="checkbox"/> 4"	
<input type="checkbox"/> 6"	
Riser Options	
From Factory: Up to 5"	
<input type="checkbox"/> Up to 24": SR24	
<input type="checkbox"/> Up to 39": LR24	
<input type="checkbox"/> Up to 43": SR24 (2)	
<input type="checkbox"/> Up to 58": SR24 + LR24	
<input type="checkbox"/> Up to 72": LR24 (2)	
<input type="checkbox"/> Up to 90": SR24 + LR24 (2)	
<input type="checkbox"/> Up to 106": LR24 (3)	
- OR -	
<input type="checkbox"/> CPRK: 11" - 106" (See specification for more detail.)	
Additional Options	
<input type="checkbox"/> HDK-8: High Water Table Hold Down Kit	
<input type="checkbox"/> C24-HP: H2O Rated Pickable Cast Iron Cover	



PO IS NON-CANCELABLE
ORDER IS NON-RETURNABLE

PROPRIETARY AND CONFIDENTIAL
THE INFORMATION CONTAINED IN THIS DRAWING IS THE SOLE PROPERTY OF STRIEM, LLC.
ANY REPRODUCTION IN PART OR AS A WHOLE WITHOUT THE WRITTEN PERMISSION OF STRIEM, LLC. IS PROHIBITED.

MODEL NUMBER:	OS-500-OMAHA
DESCRIPTION:	OMAHA TYPE 1 & 2 INTERCEPTOR
DWG BY:	ENG
DATE:	3/27/2024
REV:	2

SPECIFICATION SHEET

Striem
Kansas City, KS
Tel: 913-222-1500
orders@striemco.com
www.striemco.com

Made in the U.S.A

