

**SPECIFICATIONS**

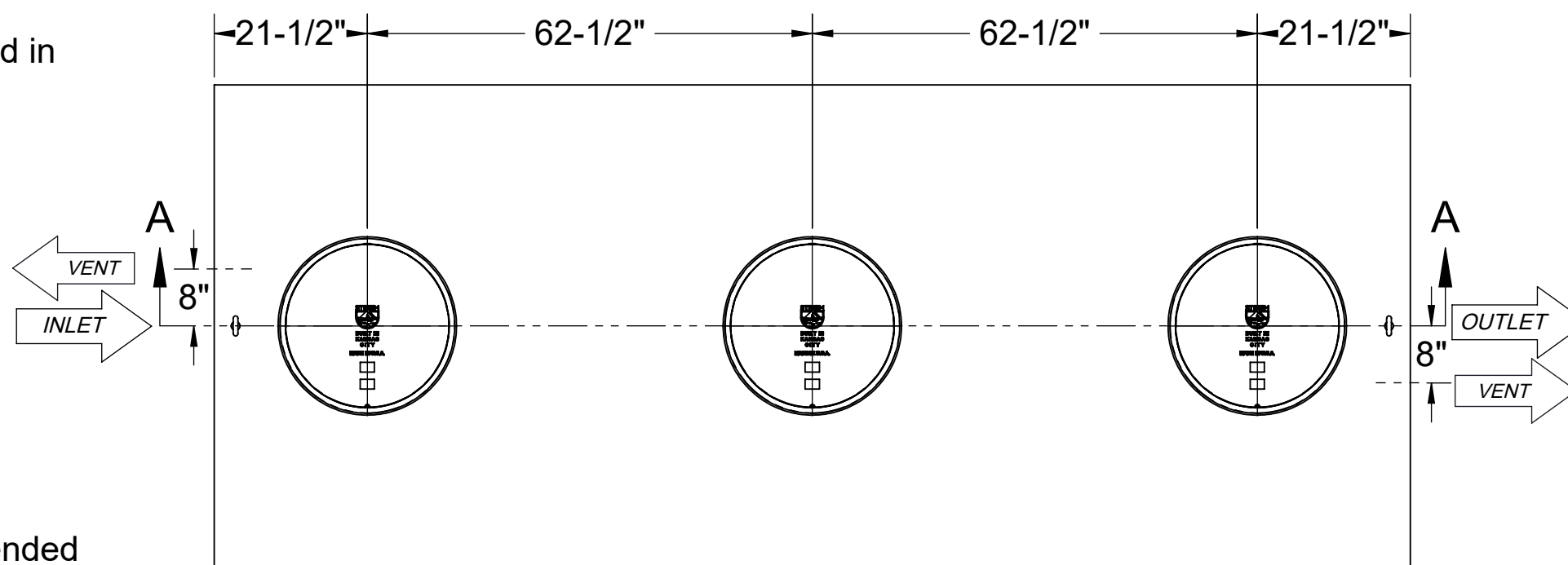
1. 6" Plain End inlet/outlet shown, 3" Plain End vents standard.
2. Max flow rate: 314 GPM.
3. Max flow rate to achieve 5 ppm of residual light liquid in effluent: 45 GPM.
4. Liquid capacity: 2000 Gallons (267 cu. ft.).
5. Oil capacity: 638 Gallons.
6. Solids capacity: 538 Gallons.
7. Unit weight: 2100 lbs.
8. Maximum operating temperature 140°F continuous.

**NOTES**

1. For gravity drainage applications only.
2. Do not use for pressure applications.
3. Cover placement allows full access to tank for proper maintenance.
4. Lifting lug set for easy install.
5. Handle of removable coalescing media may be extended using 1-1/2" PVC pipe by others.

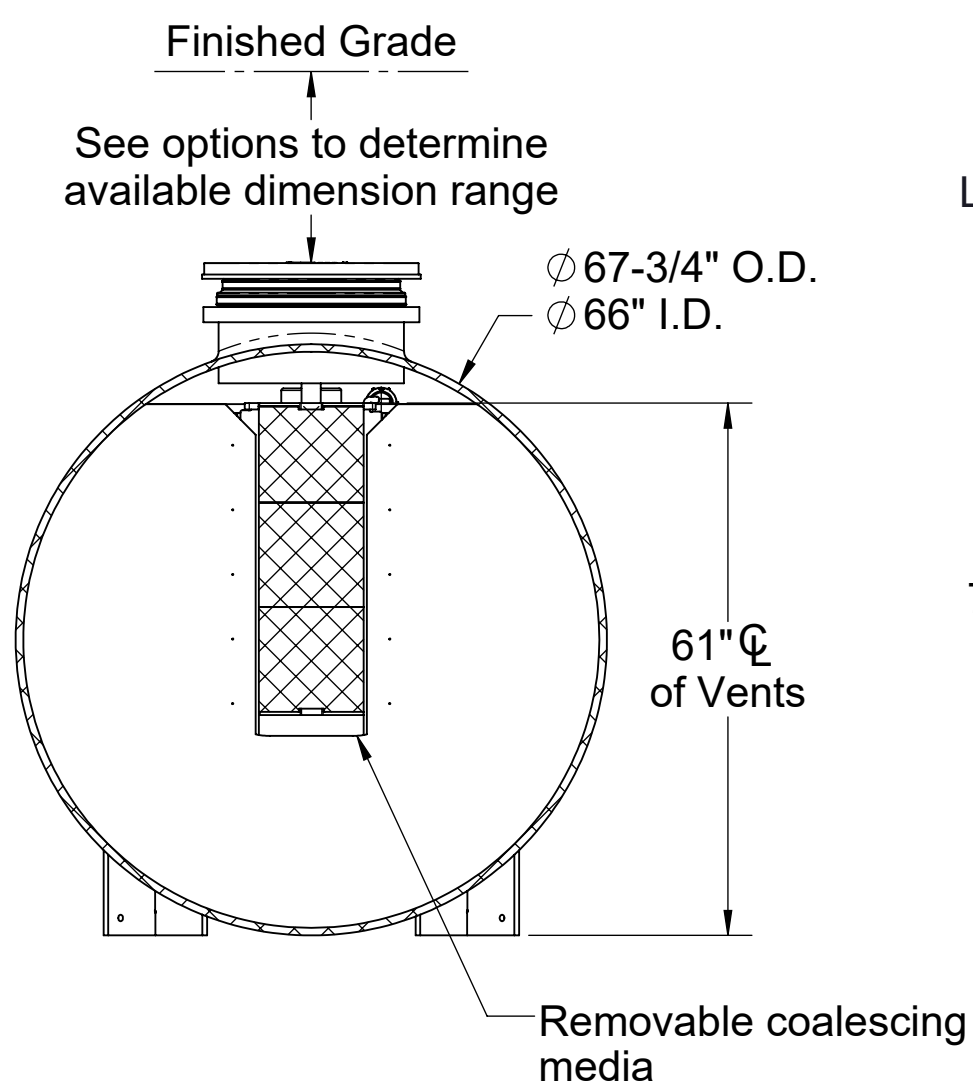
**ENGINEER SPECIFICATION GUIDE**

Striem oil separator model OT-2000-CS3 shall be lifetime guaranteed and made in the USA. Separator shall be constructed of polyethylene with 7/8" nominal wall thickness. Separator shall be manufactured for below-grade installation. Field-adjustable riser system is available as an option to bring manhole covers to grade. Separator flow rate shall be 314 GPM. Separator liquid holding capacity shall be 2000 gallons and oil capacity shall be 638 gallons. Solids capacity shall be 538 gallons. Covers shall be H20 rated pickable cast iron. Separator shall be certified to IAPMO IGC 183-2016 and carry a UPC listing.

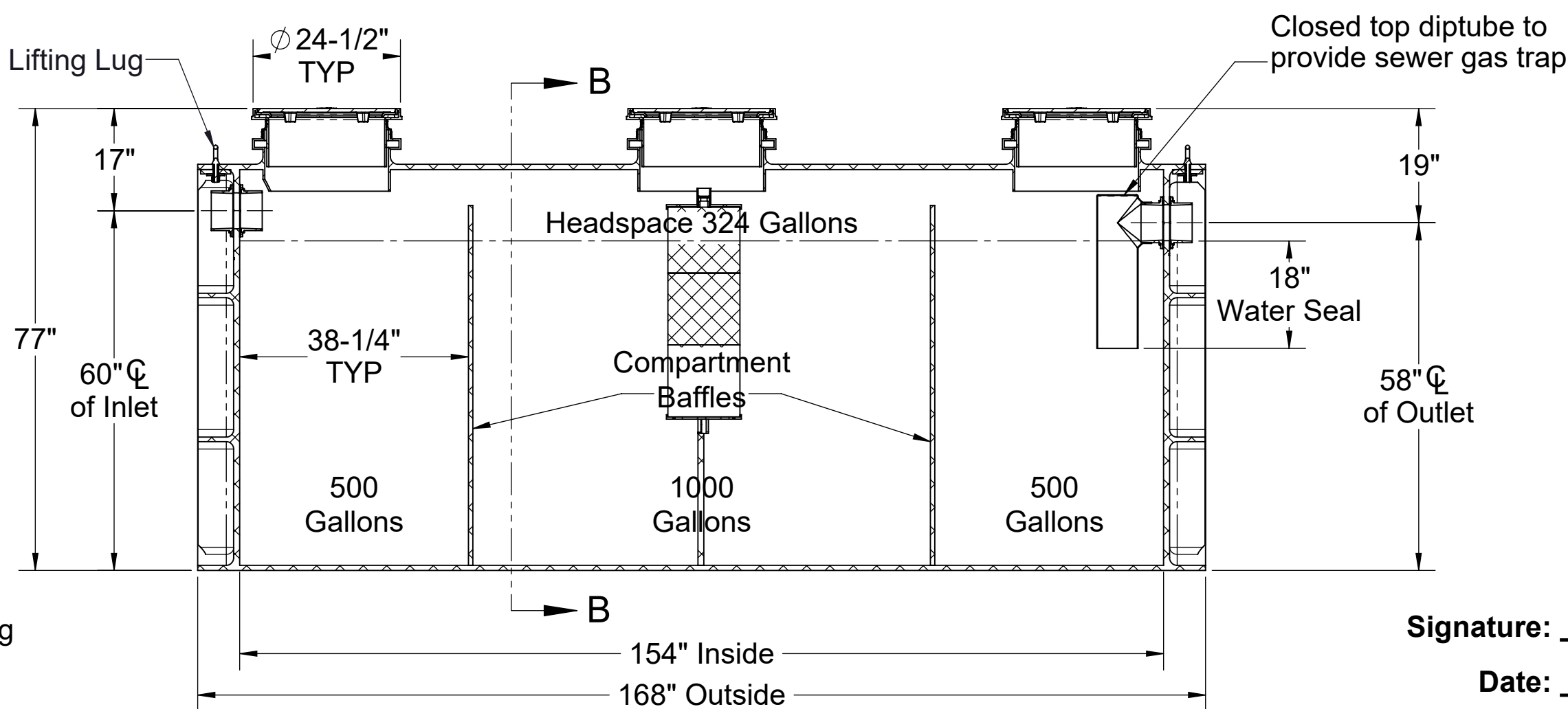


**TOP VIEW**

OPTIONS	
<b>Connection Options (Plain End Only)</b>	
<b>Inlet / Outlet</b>	<b>SELECTION REQUIRED</b>
<input type="checkbox"/> 4"	
<input type="checkbox"/> 6"	
<input type="checkbox"/> 8"	
<b>Riser Options</b>	
<b>From Factory: Up to 5"</b>	
<input type="checkbox"/> Up to 24": <b>SR24</b> (3)	
<input type="checkbox"/> Up to 39": <b>LR24</b> (3)	
<input type="checkbox"/> Up to 43": <b>SR24</b> (6)	
<input type="checkbox"/> Up to 58": <b>SR24</b> (3) + <b>LR24</b> (3)	
<input type="checkbox"/> Up to 72": <b>LR24</b> (6)	
<input type="checkbox"/> Up to 90": <b>SR24</b> (3) + <b>LR24</b> (6)	
<input type="checkbox"/> Up to 106": <b>LR24</b> (9)	
<b>Additional Options</b>	
<input type="checkbox"/> <b>HDK-7</b> : High Water Table Hold Down Kit	
<input type="checkbox"/> <b>SS</b> : Slick Stick™ Oil Level Monitoring System*	
*Monitoring system will raise covers by 3"	

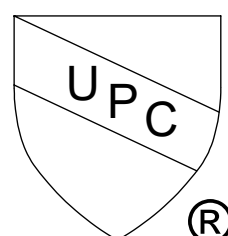
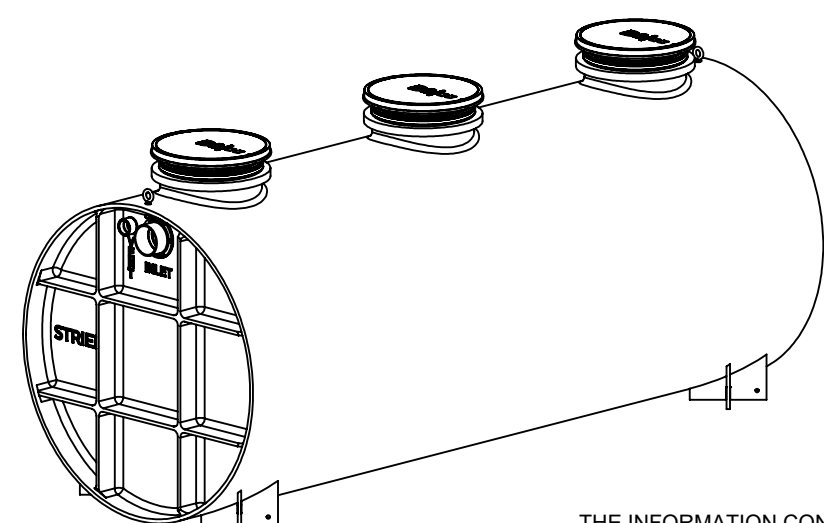


**SECTION B-B**



**SECTION A-A**

Signature: \_\_\_\_\_  
 Date: \_\_\_\_\_  
 Company: \_\_\_\_\_  
 Project: \_\_\_\_\_



**PO IS NON-CANCELABLE ORDER IS NON-RETURNABLE**

**PROPRIETARY AND CONFIDENTIAL**  
 THE INFORMATION CONTAINED IN THIS DRAWING IS THE SOLE PROPERTY OF STRIEM, LLC. ANY REPRODUCTION IN PART OR AS A WHOLE WITHOUT THE WRITTEN PERMISSION OF STRIEM, LLC. IS PROHIBITED.

<b>MODEL NUMBER:</b>	OT-2000-CS3
<b>DESCRIPTION:</b>	OIL TANKER™ POLYETHYLENE OIL SEPARATOR WITH CLEAN SWEEP™ COALESCING MEDIA 2000 GALLON CAPACITY
<b>DWG BY:</b>	ENG
<b>DATE:</b>	5/12/2023
<b>REV:</b>	0

SPECIFICATION SHEET	
Striem Kansas City, KS Tel: 913-222-1500 orders@striemco.com www.striemco.com	
Made in the U.S.A	