

SPECIFICATIONS

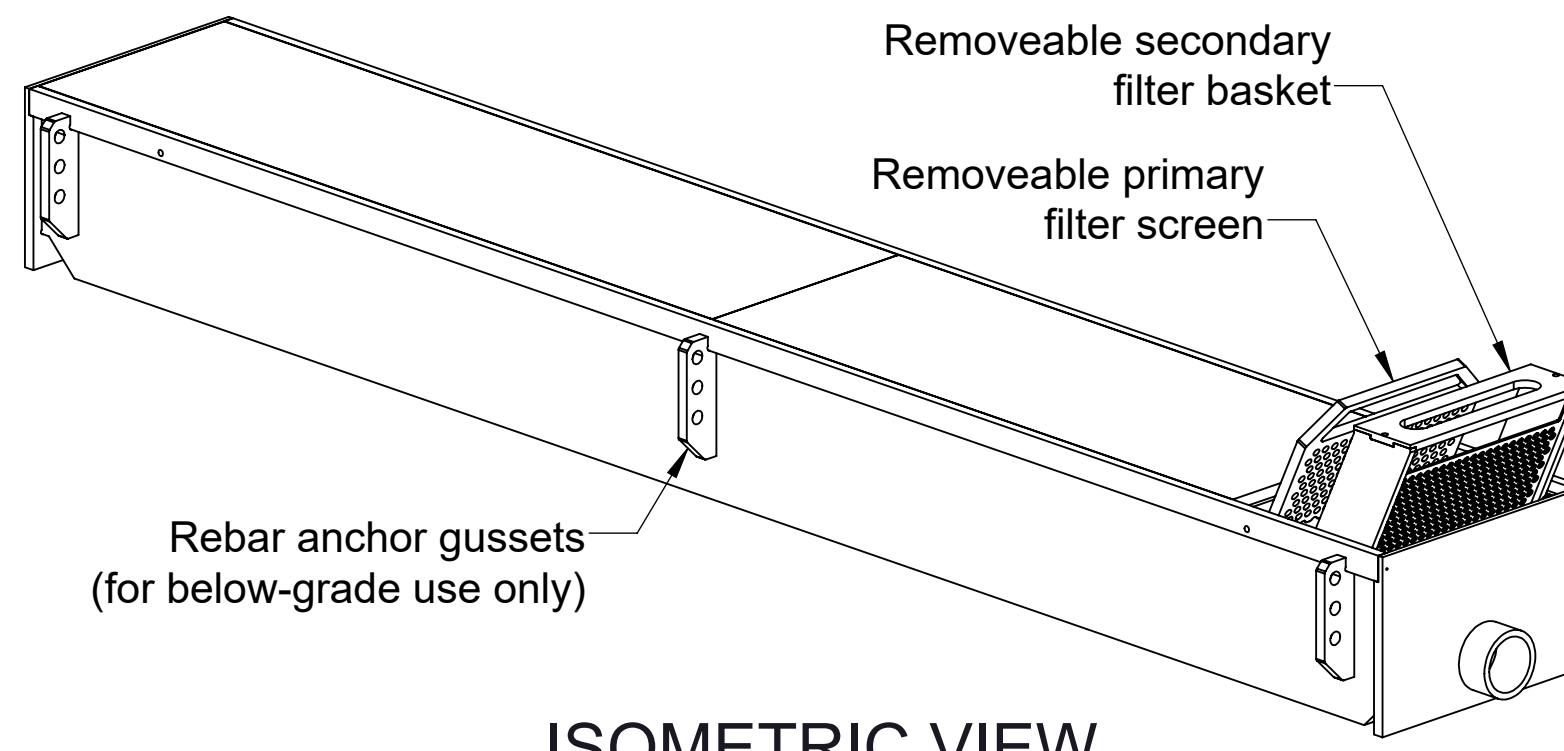
1. Plain end outlet.
2. Liquid Capacity: *See unit options.*
3. Cover weight limit: 450 lbs.
4. Maximum operating temperature 165°F intermittent.

NOTES

1. All inlet connections are field installed.
2. Rebar anchor gussets installed on below-grade units only.
3. For custom dimensions or outlet options, contact Striem.

ENGINEER SPECIFICATION GUIDE

Striem Tuff Trough shall be lifetime guaranteed and made in the USA of 3/4" polyethylene. Trough shall have removable, corrosion-resistant primary filter screen and secondary filter basket. Trough shall be furnished with a nested cover, internally sloped floor, and suitable for above- or below-grade installation. Trough shall be equipped with a plain-end outlet. Inlet connections are field installed. Cover shall have a maximum 450 lbs. load capacity. Maximum operating temperature 165°F intermittent.



ISOMETRIC VIEW

Directions: Complete steps 1-3 and submit signed submittal with purchase order.

1. Choose Connection Size

Size - Plain End Only

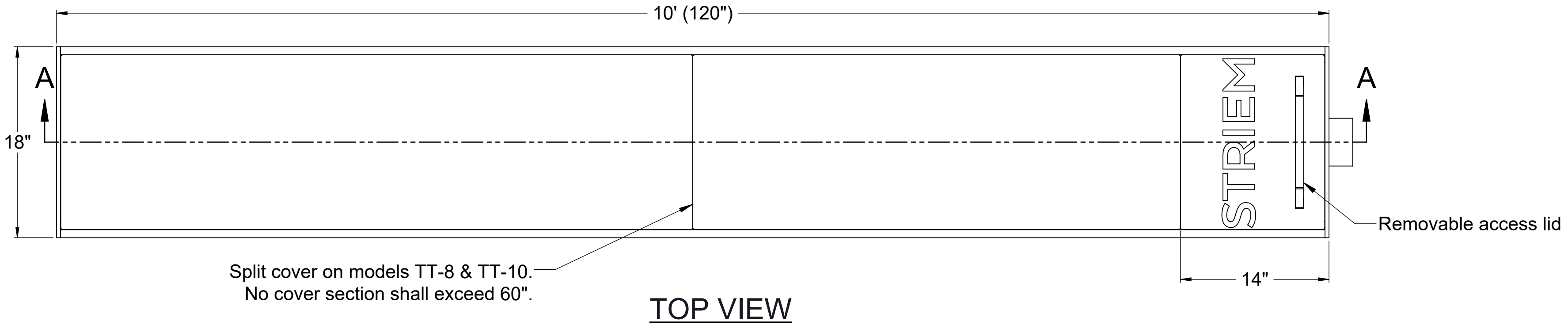
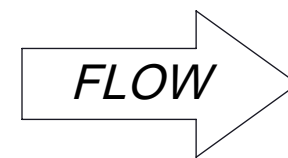
- 2" (ϕ = 2-1/4")
- 3" (ϕ = 2-11/16")
- 4" (ϕ = 3")
- 6" (ϕ = 4")

2. Select Unit

- TT-3:** 3' x 18" x 12" 21 gal.
- TT-4:** 4' x 18" x 12" 28 gal.
- TT-5:** 5' x 18" x 12" 34 gal.
- TT-6:** 6' x 18" x 12" 41 gal.
- TT-8:** 8' x 18" x 12" 55 gal.
- TT-10:** 10' x 18" x 12" 68 gal.

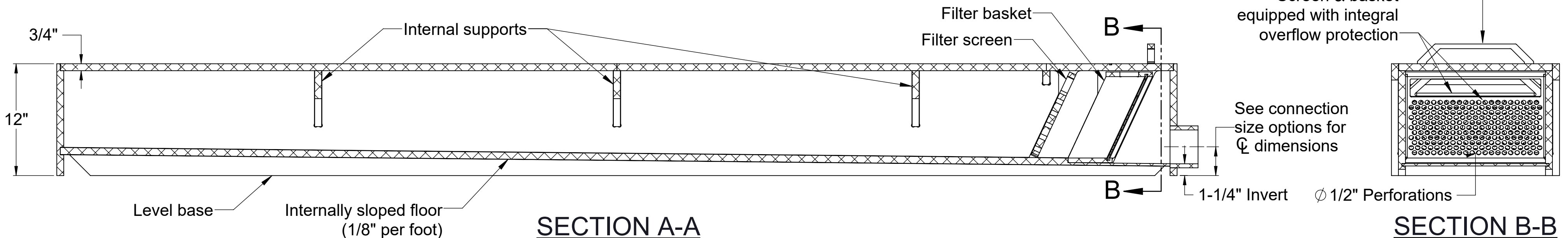
3. Other Options

- IBK-3:** 3" Plain End Inlet Bulkhead Kit Qty: _____
- Below-Grade:** Integral Rebar Anchor Gussets



TOP VIEW

Split cover on models TT-8 & TT-10.
No cover section shall exceed 60".



SECTION A-A

SECTION B-B

**PO IS NON-CANCELABLE
ORDER IS NON-RETURNABLE**

PROPRIETARY AND CONFIDENTIAL

THE INFORMATION CONTAINED IN THIS DRAWING IS THE SOLE PROPERTY OF STRIEM, LLC. ANY REPRODUCTION IN PART OR AS A WHOLE WITHOUT THE WRITTEN PERMISSION OF STRIEM, LLC. IS PROHIBITED.

DESCRIPTION:

**TUFF TROUGH
POLYETHYLENE DRAIN TROUGH
(TT-10 shown)**

DWG BY:WLF DATE: 8/29/22 REV: 1 ECO: ---

SPECIFICATION

Striem
3100 Brinkerhoff
Kansas City, KS 66115
Tel: 913-222-1500
orders@striemco.com
www.striemco.com

Made in the U.S.A

