

**SPECIFICATIONS**

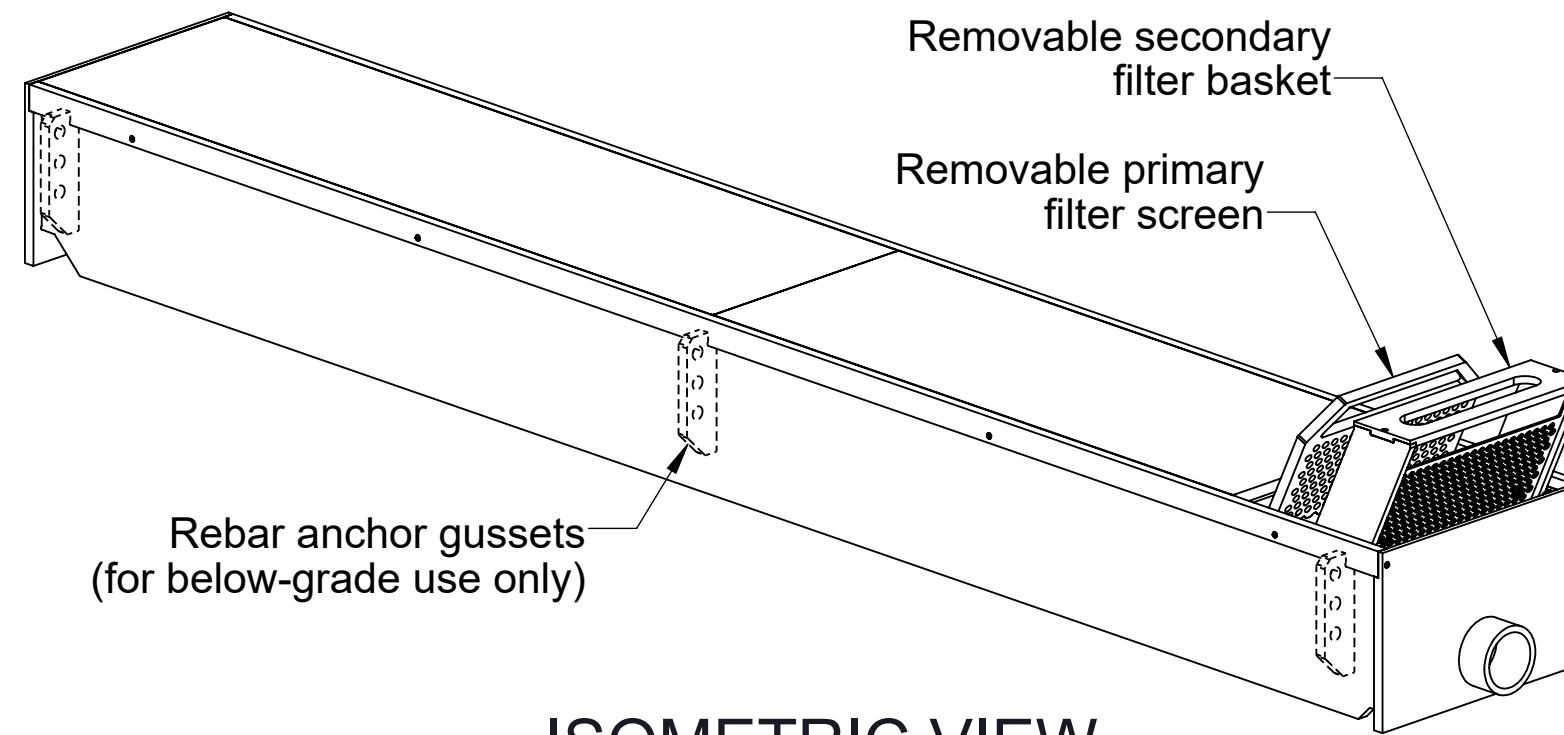
1. 4" Plain End outlet shown.
2. Liquid Capacity: *See unit options.*
3. Cover weight limit: 450 lbs.
4. Maximum operating temperature 165°F intermittent.

**NOTES**

1. All inlet connections are field installed.
2. Rebar anchor gussets installed on below-grade units only.
3. For custom dimensions or outlet options, contact Striem.

**ENGINEER SPECIFICATION GUIDE**

Striem Tuff Trough shall be lifetime guaranteed and made in the USA of 3/4" polyethylene. Trough shall have removable, corrosion-resistant primary filter screen and secondary filter basket. Trough shall be furnished with a nested cover, internally sloped floor, and suitable for above- or below-grade installation. Trough shall be equipped with a plain end outlet. Inlet connections are field installed. Cover shall have a maximum 450 lbs. load capacity. Maximum operating temperature 165°F intermittent. Trough shall be certified to IAPMO IGC 167-2011ae2 and carry a UPC listing.



**ISOMETRIC VIEW**

**SELECT CONFIGURATION**

**Connection Size (Plain End Only)**

- 2" (ϕ = 2-1/4")
- 3" (ϕ = 2-11/16")
- 4" (ϕ = 3")
- 6" (ϕ = 4")

**SELECTION REQUIRED**

**Select Unit**

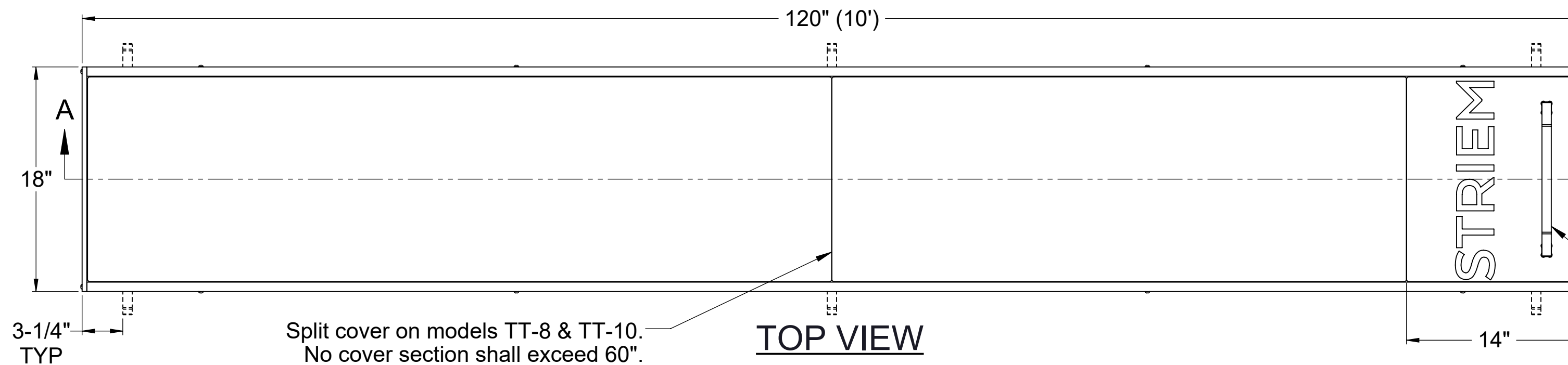
- TT-3:** 3' x 18" x 12" 21 gal.
- TT-4:** 4' x 18" x 12" 28 gal.
- TT-5:** 5' x 18" x 12" 34 gal.
- TT-6:** 6' x 18" x 12" 41 gal.
- TT-8:** 8' x 18" x 12" 55 gal.
- TT-10:** 10' x 18" x 12" 68 gal.

**Select Installation Type**

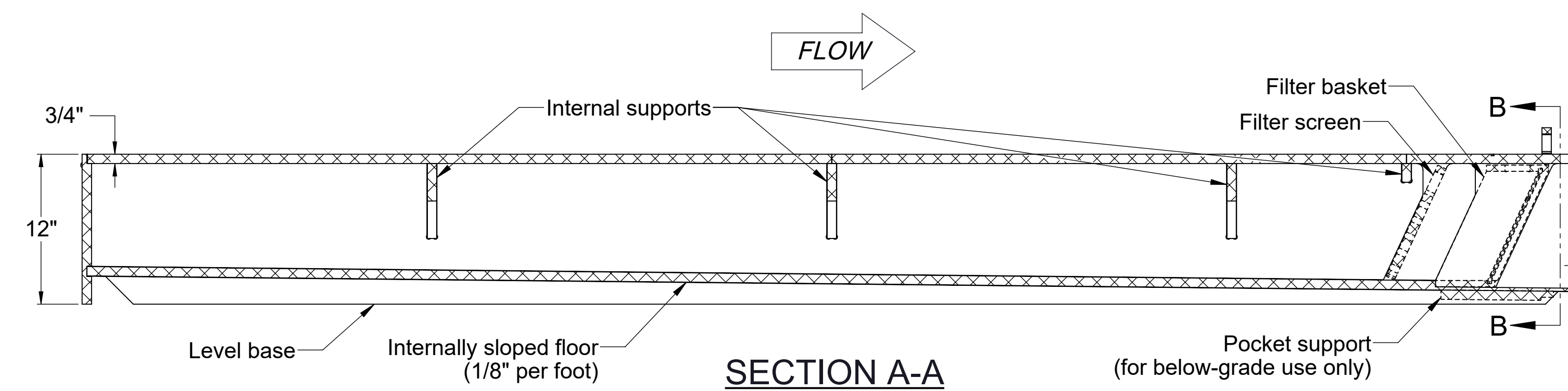
- Above-Grade:** On-the-floor applications
- Below-Grade:** Integral Rebar Anchor Gussets

**Additional Options**

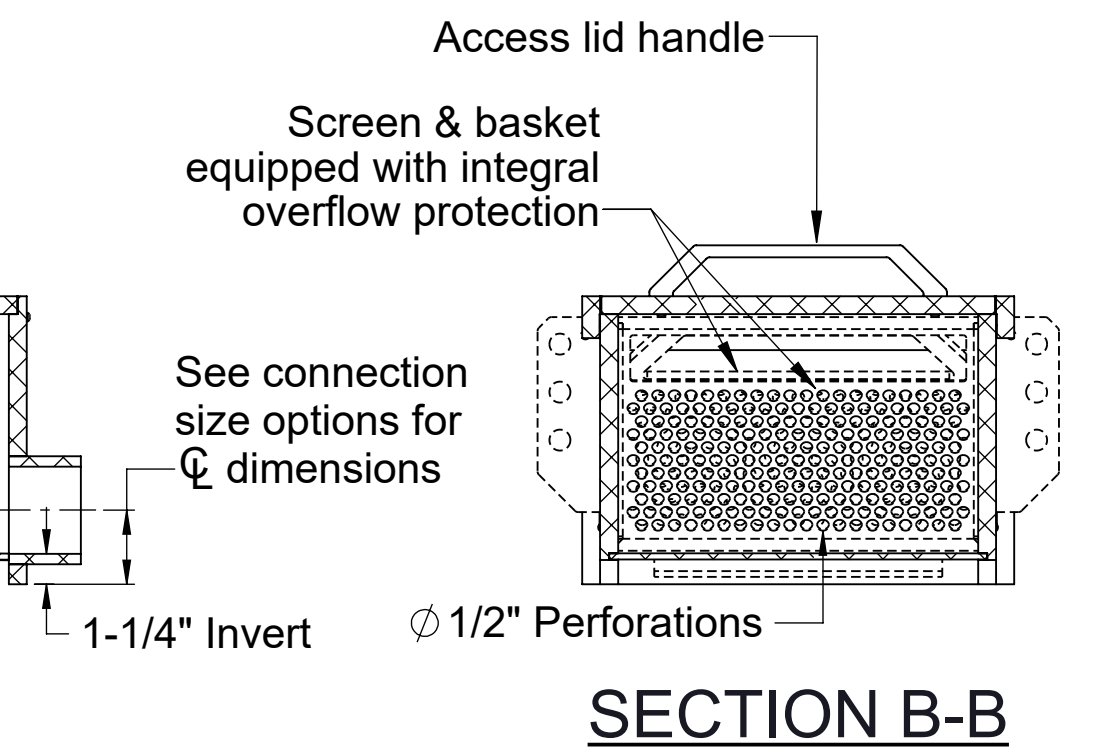
- IBK-3:** 3" Plain End Inlet Bulkhead Kit Qty: \_\_\_\_\_



**TOP VIEW**

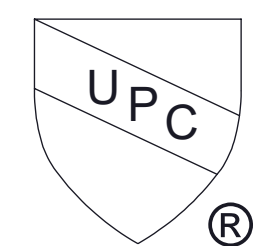


**SECTION A-A**



**SECTION B-B**

**PO IS NON-CANCELABLE  
ORDER IS NON-RETURNABLE**



**DESCRIPTION:**

**TUFF TROUGH  
POLYETHYLENE DRAIN TROUGH  
(TT-10 shown)**

**SPECIFICATION SHEET**

**Striem**  
Kansas City, KS  
Tel: 913-222-1500  
orders@striemco.com  
www.striemco.com



**Made in the U.S.A**

<b>DWG BY:</b> ENG	<b>DATE:</b> 11/14/2023	<b>REV:</b> 1
--------------------	-------------------------	---------------

PROPRIETARY AND CONFIDENTIAL  
THE INFORMATION CONTAINED IN THIS DRAWING IS THE SOLE PROPERTY OF STRIEM, LLC.  
ANY REPRODUCTION IN PART OR AS A WHOLE WITHOUT THE WRITTEN PERMISSION OF STRIEM, LLC. IS PROHIBITED.