

SPECIFICATIONS

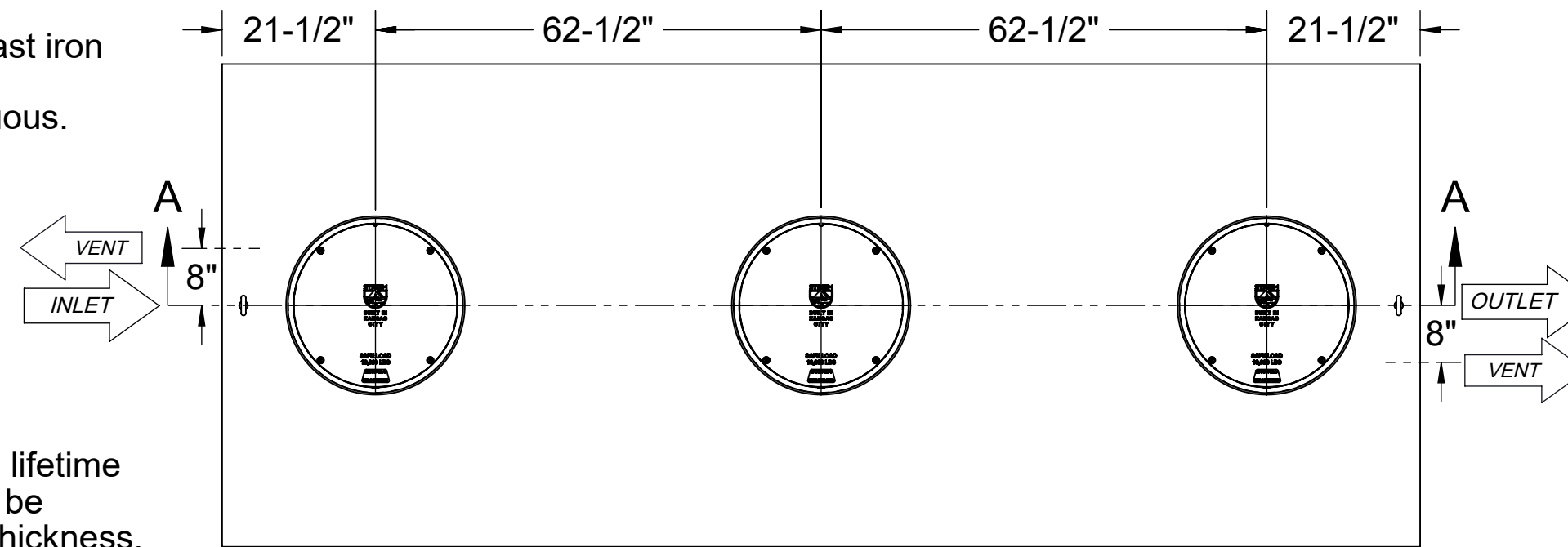
1. 6" Plain End inlet/outlet shown, 3" Plain End vents, C24-H covers standard.
2. Liquid capacity: 2000 gallons (267 cu. ft.).
3. Solids capacity: 1077 gallons.
4. Unit weight w/ standard covers: 1820 lbs.; w/ cast iron covers: 2000 lbs.
5. Maximum operating temperature 140°F continuous.

NOTES

1. For gravity drainage applications only.
2. Do not use for pressure applications.
3. Cover placement allows full access to tank for proper maintenance.
4. Lifting lug set for easy install.

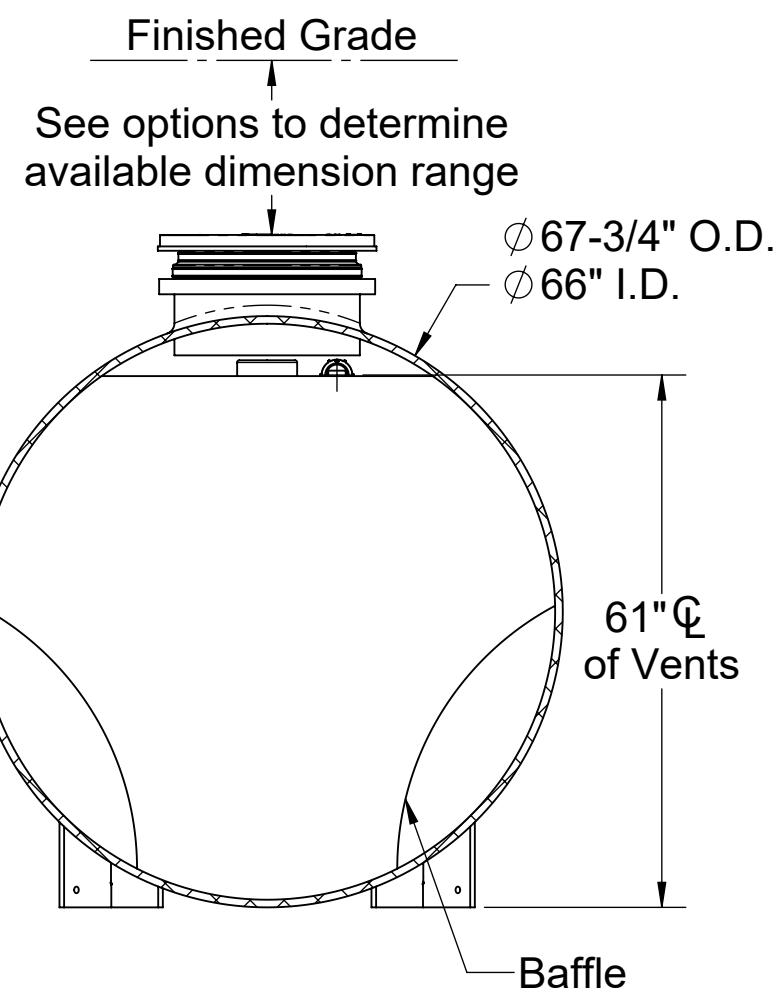
ENGINEER SPECIFICATION GUIDE

Striem solids interceptor model CB-2000-S shall be lifetime guaranteed and made in the USA. Interceptor shall be constructed of polyethylene with 7/8" nominal wall thickness. Interceptor shall be manufactured for below-grade installation. Field-adjustable riser system is available as an option to bring manhole covers to grade. Interceptor liquid holding capacity shall be 2000 gallons and solids capacity shall be 1077 gallons. Covers shall provide water/gas-tight seal and have a maximum 16,000 lbs. load capacity.

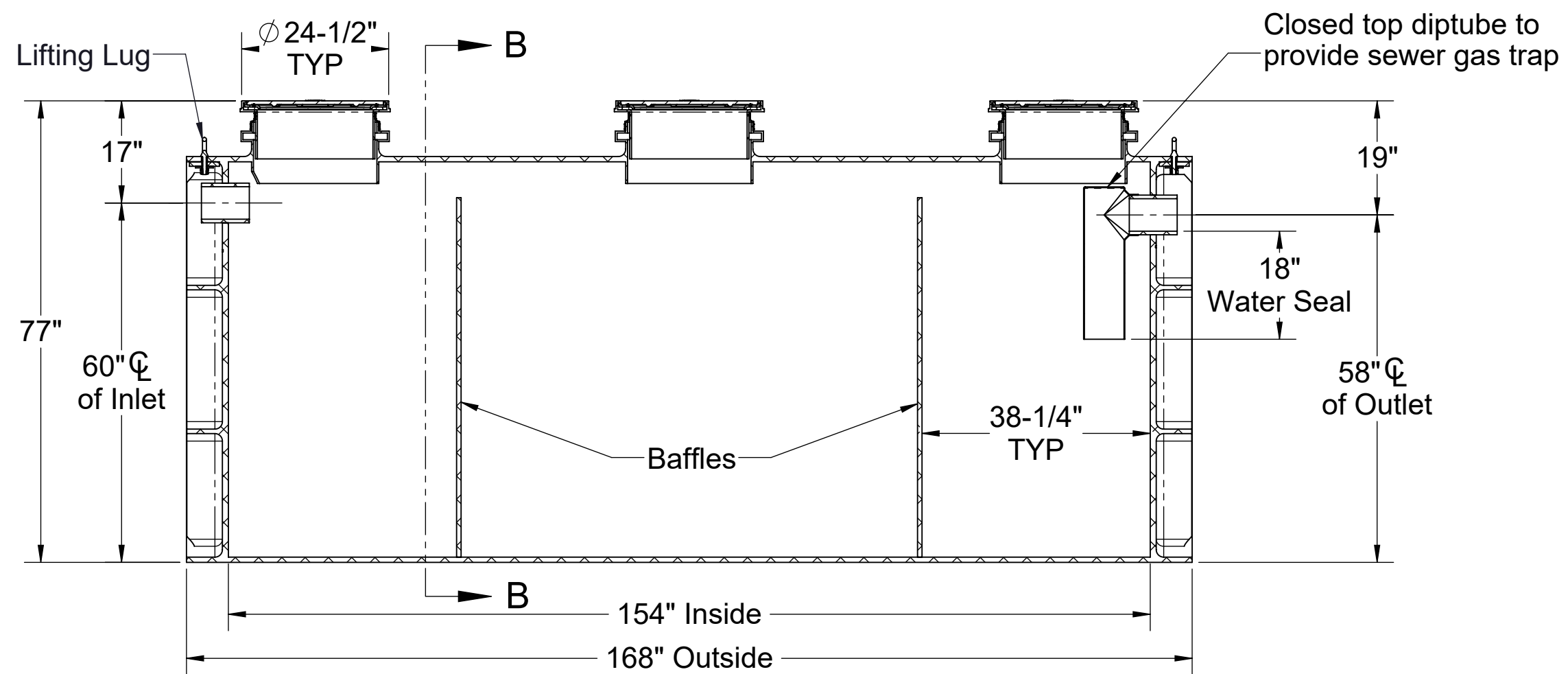


TOP VIEW

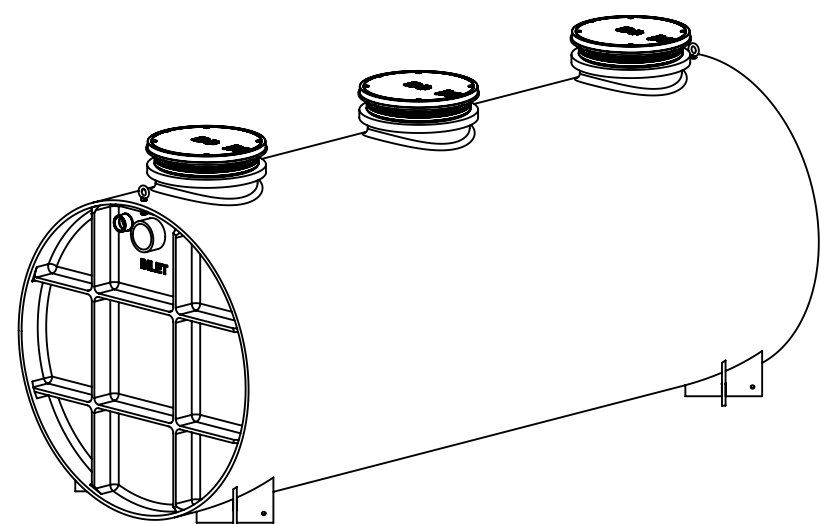
OPTIONS	
Connection Options (Plain End Only)	
Inlet / Outlet	SELECTION REQUIRED
<input type="checkbox"/> 4"	
<input type="checkbox"/> 6"	
<input type="checkbox"/> 8"	
Riser Options	
From Factory: 0" - 5"	
<input type="checkbox"/> Up to 24": SR24 (3)	
<input type="checkbox"/> Up to 39": LR24 (3)	
<input type="checkbox"/> Up to 43": SR24 (6)	
<input type="checkbox"/> Up to 58": SR24 (3) + LR24 (3)	
<input type="checkbox"/> Up to 72": LR24 (6)	
<input type="checkbox"/> Up to 90": SR24 (3) + LR24 (6)	
<input type="checkbox"/> Up to 106": LR24 (9)	
- OR -	
<input type="checkbox"/> CPRK (3): 11" - 106" (See specification for more detail.)	
Additional Options	
<input type="checkbox"/> HDK-7 : High Water Table Hold Down Kit	
<input type="checkbox"/> C24-HP (3): H2O Rated Pickable Cast Iron Covers	



SECTION B-B



SECTION A-A



PO IS NON-CANCELABLE ORDER IS NON-RETURNABLE

MODEL NUMBER: CB-2000-S		SPECIFICATION SHEET	
DESCRIPTION: POLYETHYLENE CATCH BASIN 2000 GALLON CAPACITY			
DWG BY: ENG DATE: 1/15/2024 REV: 1		Striem Kansas City, KS Tel: 913-222-1500 orders@striemco.com www.striemco.com	
		Made in the U.S.A. 