

SPECIFICATIONS

1. 6" Plain End outlet shown.
2. Liquid capacity: 500 gallons (66 cu. ft.).
3. Solids capacity: 400 gallons.
4. Basket capacity: 7 Gallons.
5. Unit weight: 900 lbs.
6. Maximum operating temperature 140°F continuous.

NOTES

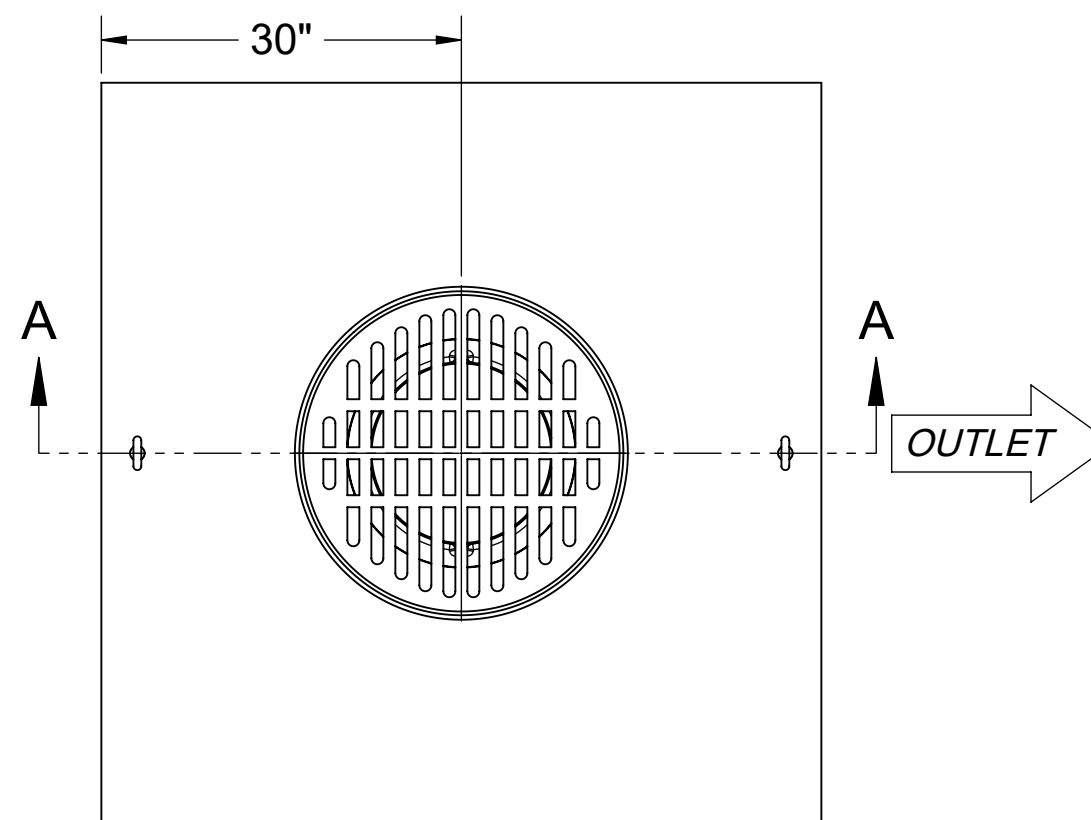
1. For gravity drainage applications only.
2. Do not use for pressure applications.
3. Cover placement allows full access to tank for proper maintenance.
4. Lifting lug set for easy install.

ENGINEER SPECIFICATION GUIDE

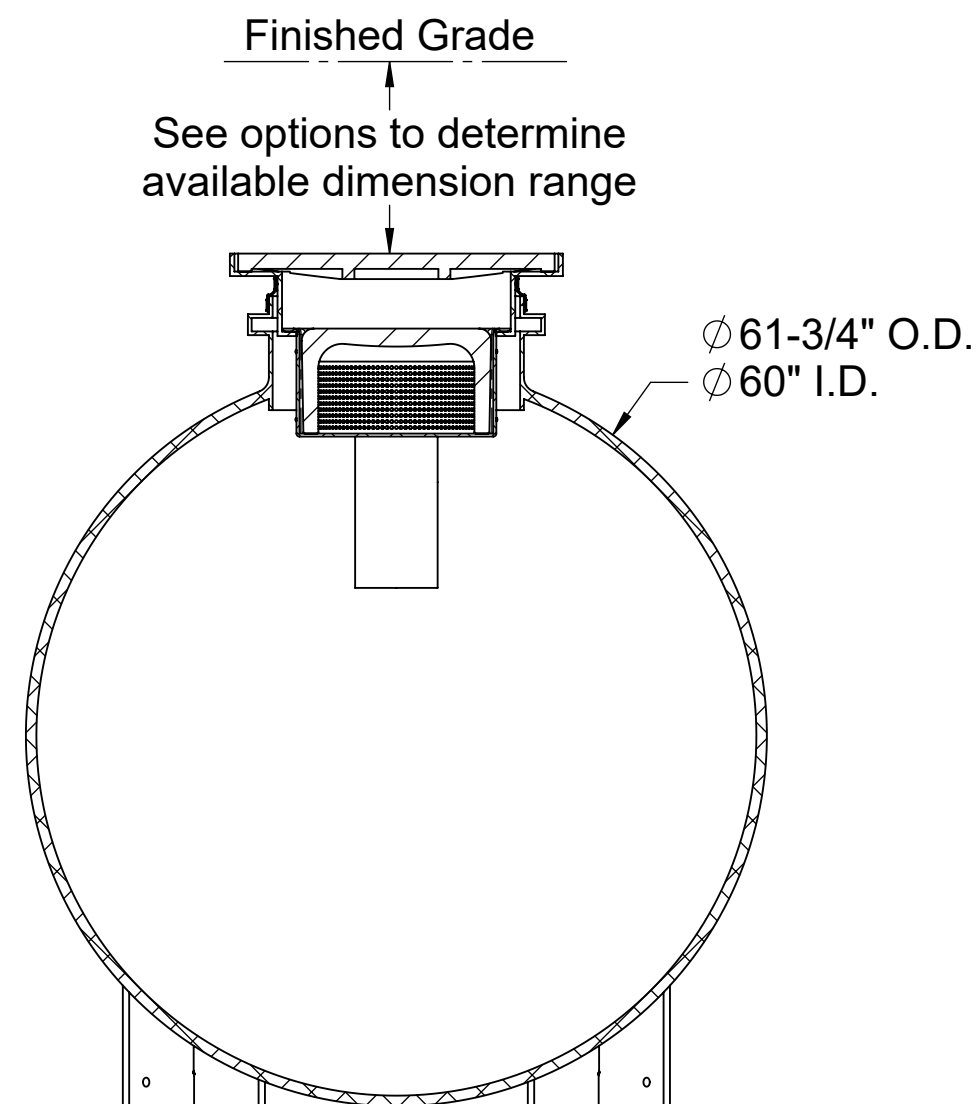
Striem solids interceptor model CB-500-G shall be lifetime guaranteed and made in the USA. Interceptor shall be constructed of polyethylene with 7/8" nominal wall thickness. Interceptor shall be manufactured for below-grade installation. Field-adjustable riser system is available as an option to bring manhole cover to grade. Interceptor liquid holding capacity shall be 500 gallons. Interceptor solids capacity shall be 400 gallons. BCB-7 basket solids capacity shall be 7 gallons. Cover shall be H20 rated cast iron grate.

THIRD PARTY STRUCTURAL ANALYSIS

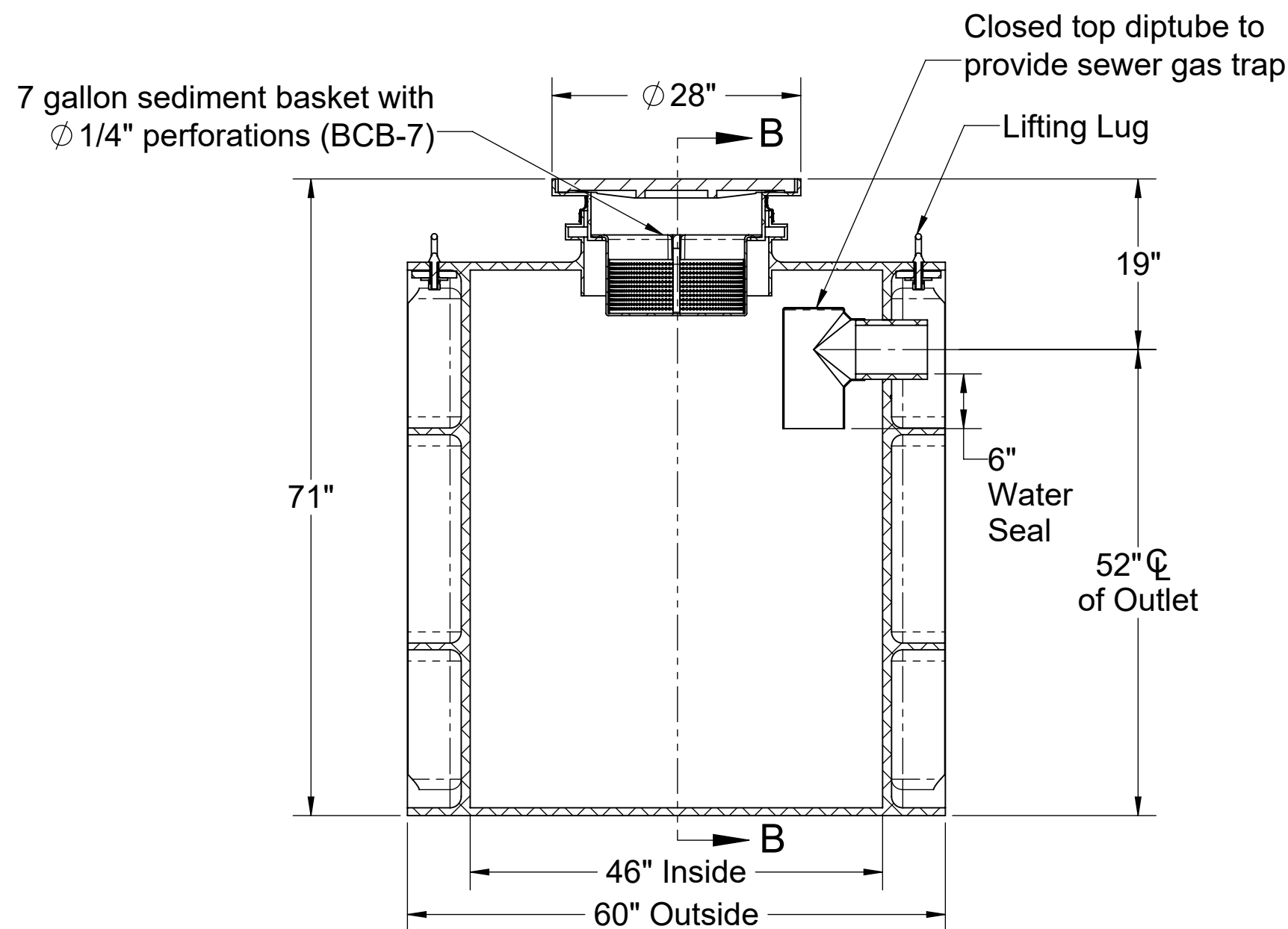
The structural design of the CB-500-G has been approved and stamped by a third-party structural engineer for direct burial in accordance with Striem's installation instructions.



TOP VIEW

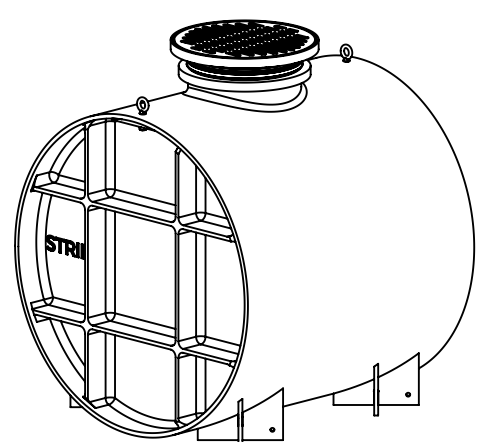


SECTION B-B



SECTION A-A

OPTIONS	
Connection Options (Plain End Only)	
Outlet	SELECTION REQUIRED
<input type="checkbox"/> 4"	
<input type="checkbox"/> 6"	
Riser Options	
From Factory: 0" - 2"*	
<input type="checkbox"/> 5" - 24": SR24	
<input type="checkbox"/> Up to 39": LR24	
<input type="checkbox"/> Up to 43": SR24 (2)	
<input type="checkbox"/> Up to 58": SR24 + LR24	
<input type="checkbox"/> Up to 72": LR24 (2)	
<input type="checkbox"/> Up to 90": SR24 + LR24 (2)	
<input type="checkbox"/> Up to 106": LR24 (3)	
*If in the range of 2" - 5", contact Striem for a custom solution.	
Additional Options	
<input type="checkbox"/> HDK-8: High Water Table Hold Down Kit	



PO IS NON-CANCELABLE
ORDER IS NON-RETURNABLE

PROPRIETARY AND CONFIDENTIAL
THE INFORMATION CONTAINED IN THIS DRAWING IS THE SOLE PROPERTY OF STRIEM, LLC.
ANY REPRODUCTION IN PART OR AS A WHOLE WITHOUT THE WRITTEN PERMISSION OF STRIEM, LLC. IS PROHIBITED.

MODEL NUMBER:	CB-500-G	SPECIFICATION SHEET	
DESCRIPTION:	POLYETHYLENE CATCH BASIN WITH H20 RATED CAST IRON GRATE AND BCB-7 SEDIMENT BASKET		
DWG BY: ENG	DATE: 1/15/2024	REV: 2	Striem Kansas City, KS Tel: 913-222-1500 orders@striemco.com www.striemco.com Made in the U.S.A