

SPECIFICATIONS

- 1. 1-1/2" or 2" PVC socket inlet and outlet connections (adapters included).
- 2. Under-sink solids interceptor.
- 3. PVC housing, polycarbonate perforated basket with o-ring to provide water-tight seal.
- 4. Top inlet and three outlet options (plugs included for unused outlets).
- 5. Max flow rate: 23 GPM.
- 6. Solids capacity: 0.17 gallons.
- 7. Unit weight: 3.2 lbs.
- 8. Maximum operating temperature: 140°F continuous.
- 9. For gravity drainage applications only.

ENGINEER SPECIFICATION GUIDE

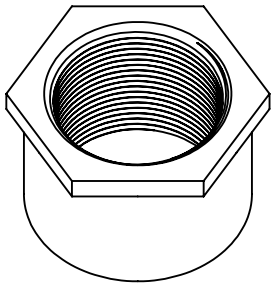
Striem solids interceptor model SIDEKICK shall be lifetime guaranteed and made in the USA. Interceptor shall be constructed of an injection molded PVC housing and polycarbonate perforated basket. Interceptor is manufactured for above-grade installation. Basket shall provide the ability for side-access maintenance and shall be clear to allow visibility into unit. Solids capacity shall be 0.17 gallons. Interceptor shall be certified to IAPMO IGC 167-2011ae2 and carry a UPC listing.

APPLICATIONS FOR USE\*

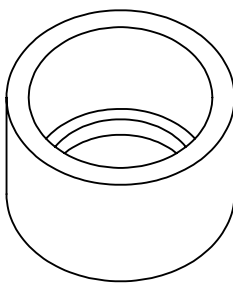
- Pet wash sink (hair)
- Art room sink (clay/plaster)
- Kitchen sink (food waste)
- Utility sink (paint chips/debris)
- Washing machine (lint/debris)
- Barber shop/hair salon sink (hair)
- Dentist sink (dental plaster)

\*List is not exhaustive.

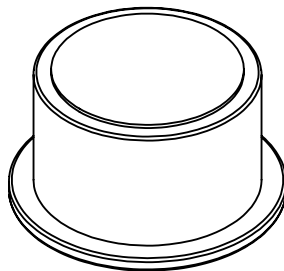
INCLUDED



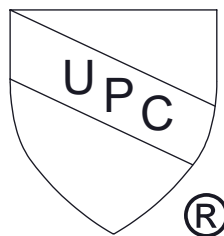
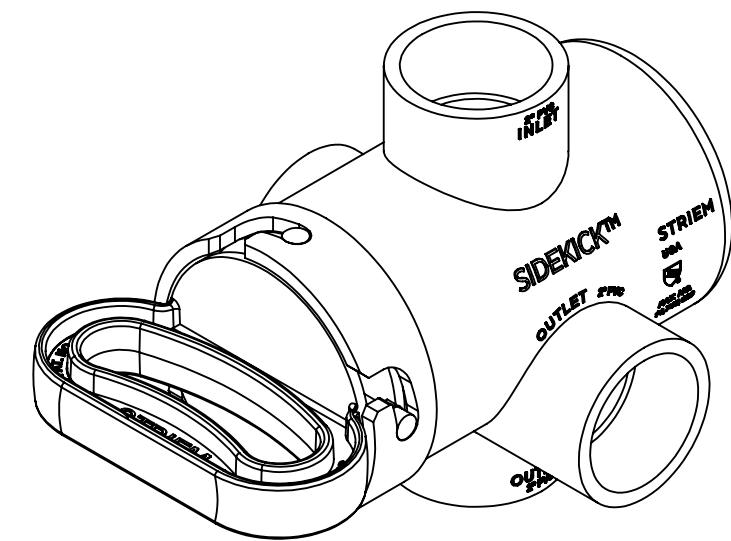
2" x 1-1/2" NPS  
PVC Adapter



2" x 1-1/2"  
PVC Adapter (2)



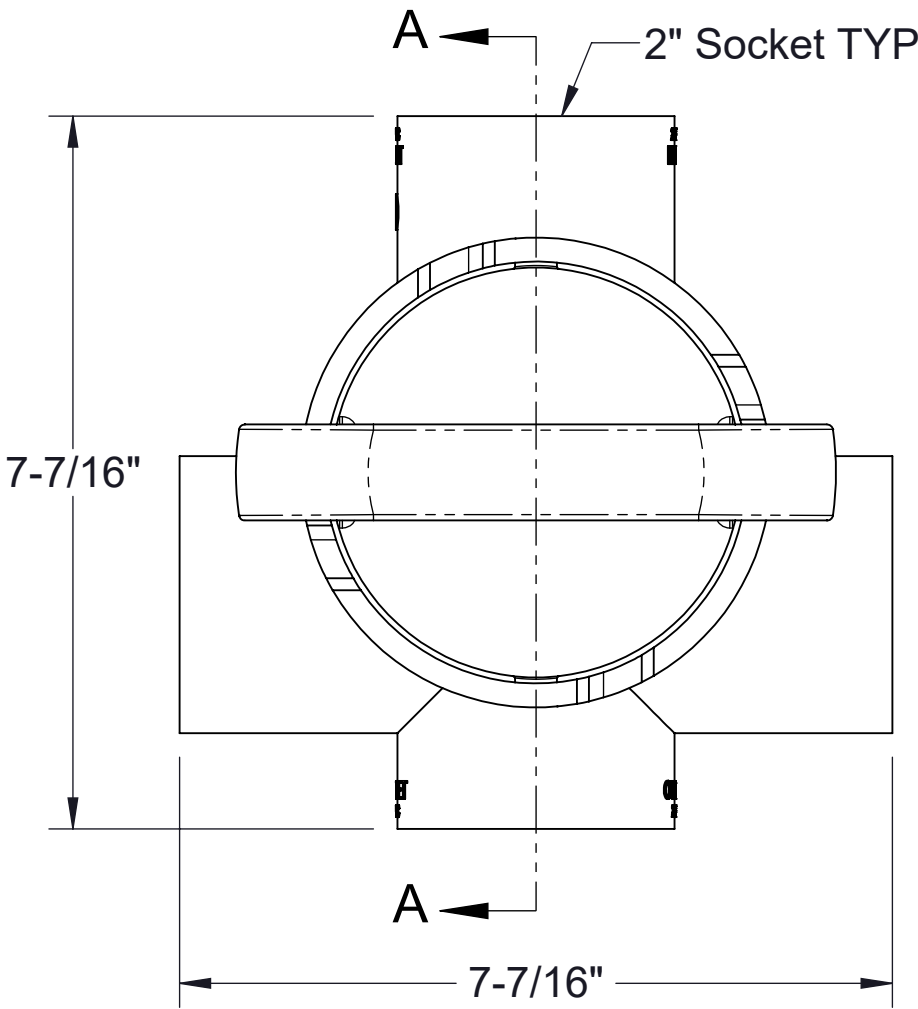
2" Inverted  
PVC Plug (2)



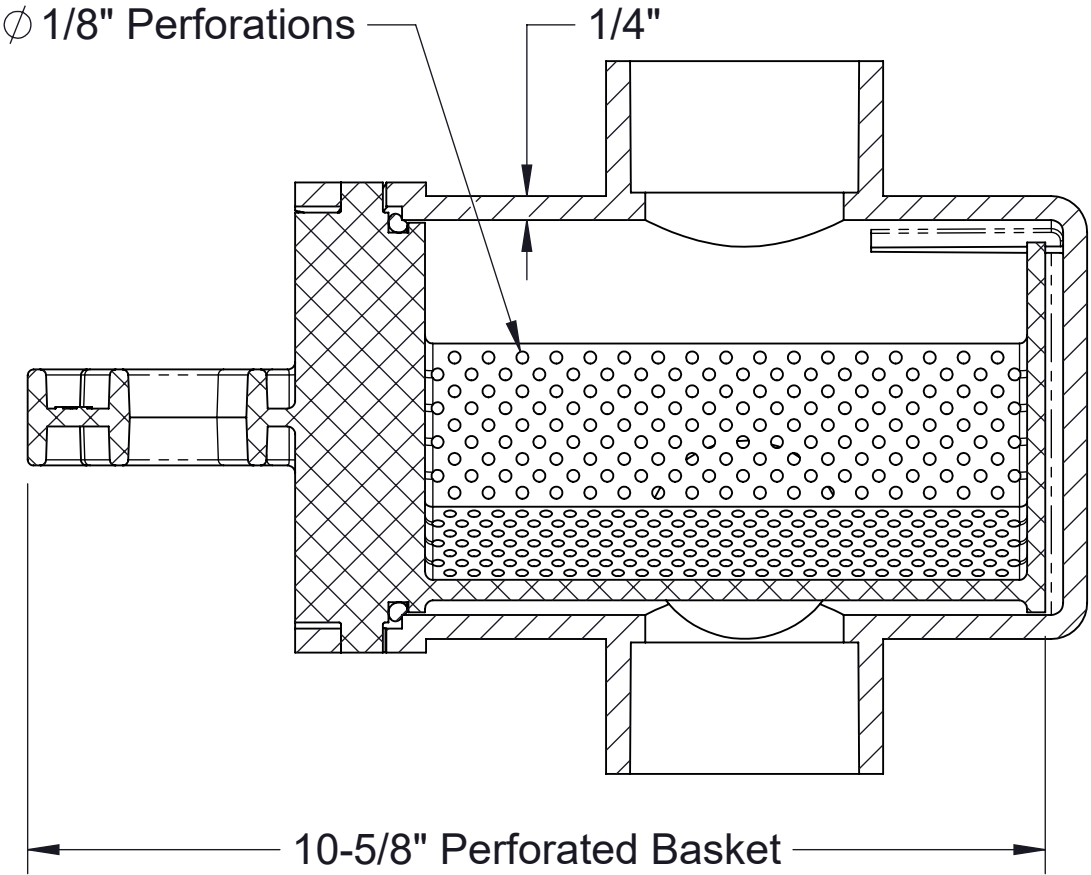
US Patent No.  
US11745126B2

PROPRIETARY AND CONFIDENTIAL

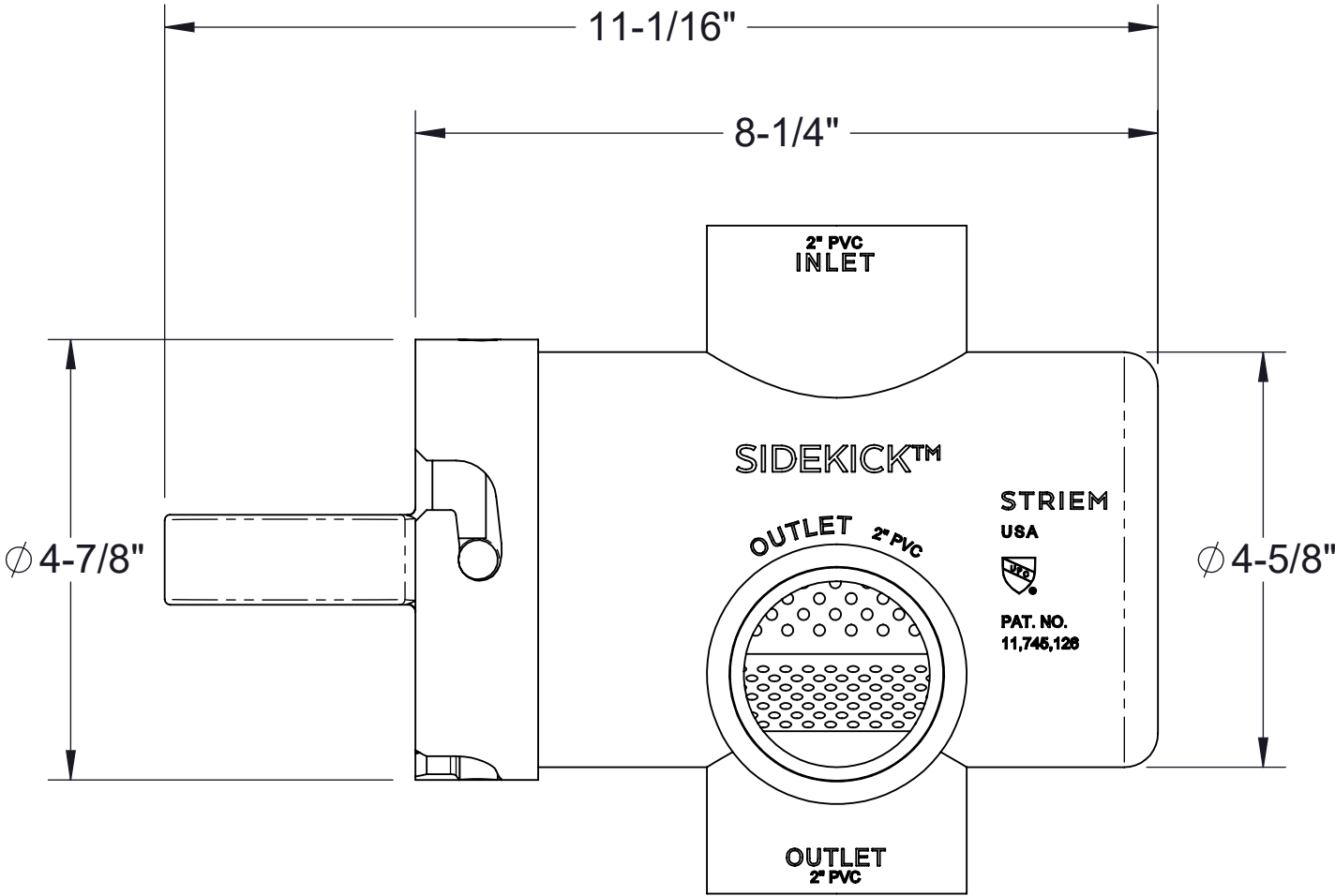
THE INFORMATION CONTAINED IN THIS DRAWING IS THE SOLE PROPERTY OF STRIEM, LLC. ANY REPRODUCTION IN PART OR AS A WHOLE WITHOUT THE WRITTEN PERMISSION OF STRIEM, LLC. IS PROHIBITED.



FRONT VIEW



SECTION A-A



SIDE VIEW

|   |                 |  |  |
|---|-----------------|--|--|
| MODEL NUMBER: SIDEKICK                                |                 | SPECIFICATION SHEET  |  |
| DESCRIPTION: SIDEKICK™ SIDE ACCESS SOLIDS INTERCEPTOR |                 | Striem<br>Kansas City, KS<br>Tel: 913-222-1500<br>orders@striemco.com<br>www.striemco.com<br><br>Made in the U.S.A |  |
| DWG BY: ENG   | DATE: 9/14/2023 | REV: 2   |  |