

**SPECIFICATIONS**

1. 4" Plain End inlet/outlet, 2" Plain End vents standard.
2. Liquid holding capacity: 250 Gallons.
3. Unit weight: 225 lbs.
4. Maximum operating temperature 140 °F continuous.

**NOTES**

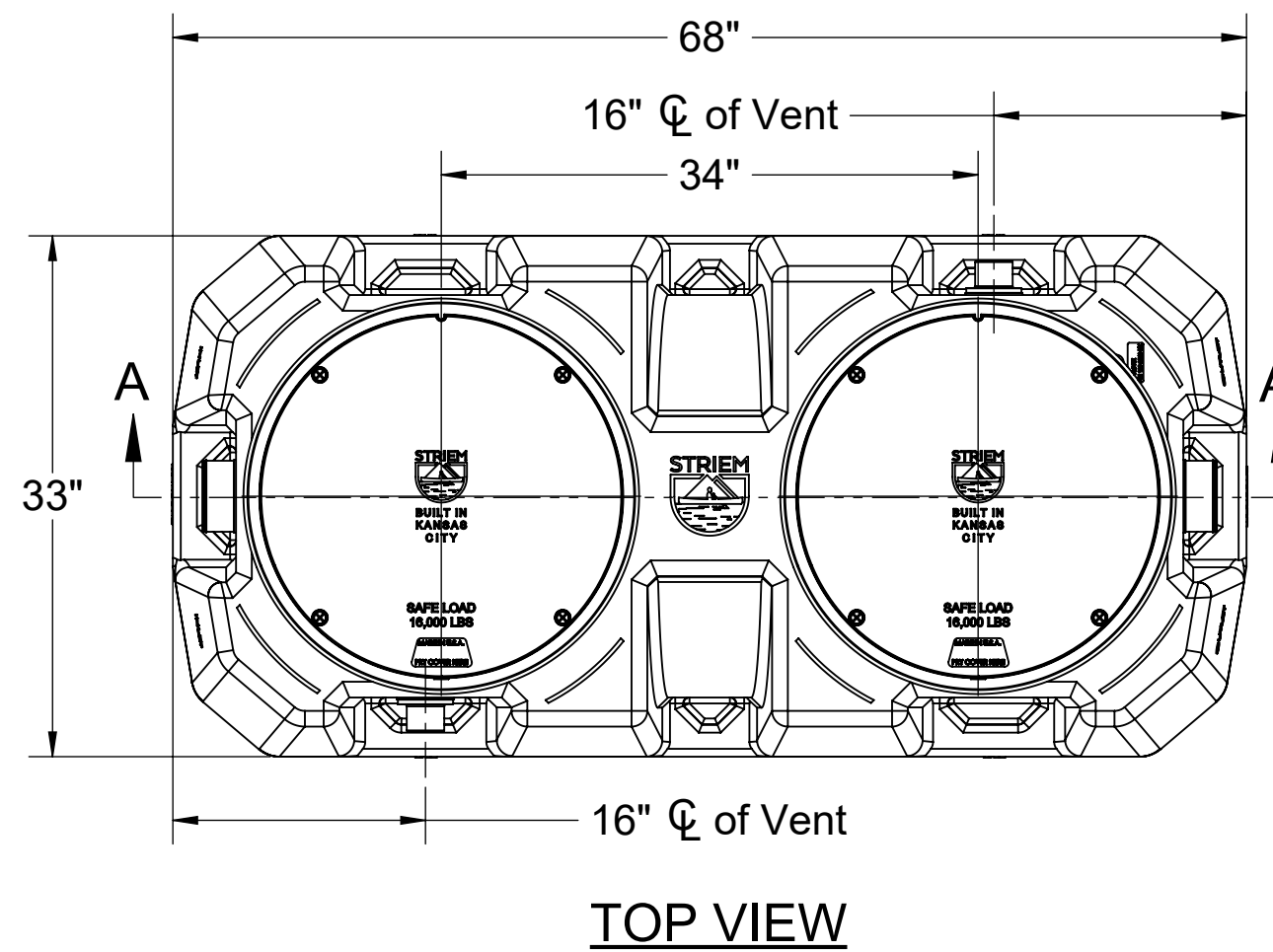
1. For gravity drainage applications only.
2. Do not use for pressure applications.
3. Cover placement allows full access to tank for proper maintenance.
4. Diptube is removable to inspect/clean piping.

**ENGINEER SPECIFICATION GUIDE**

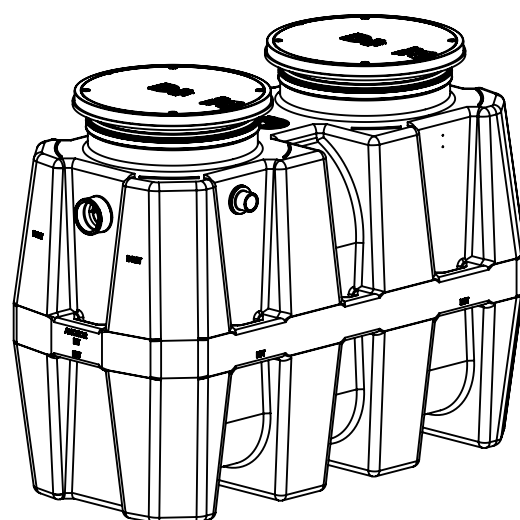
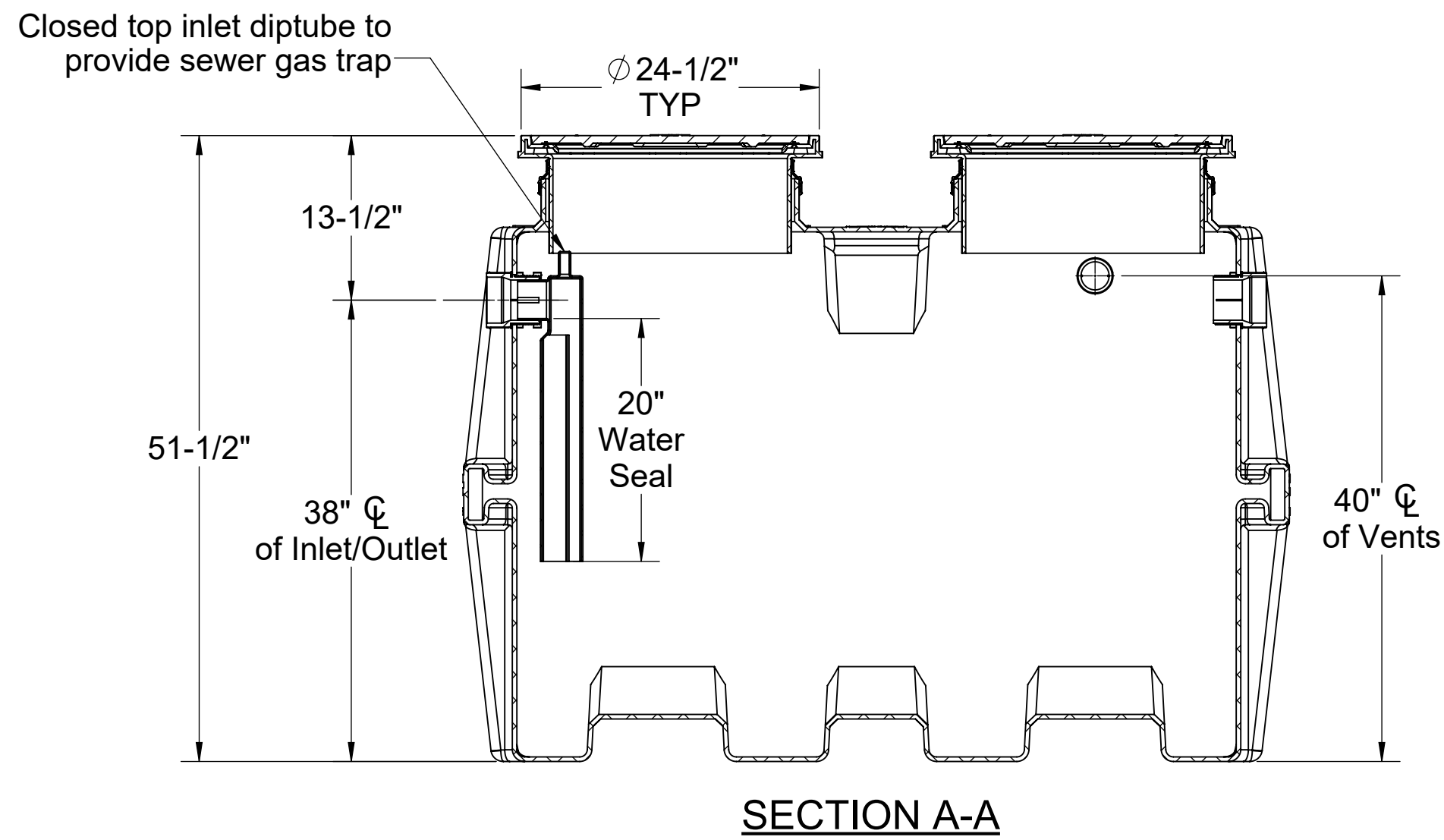
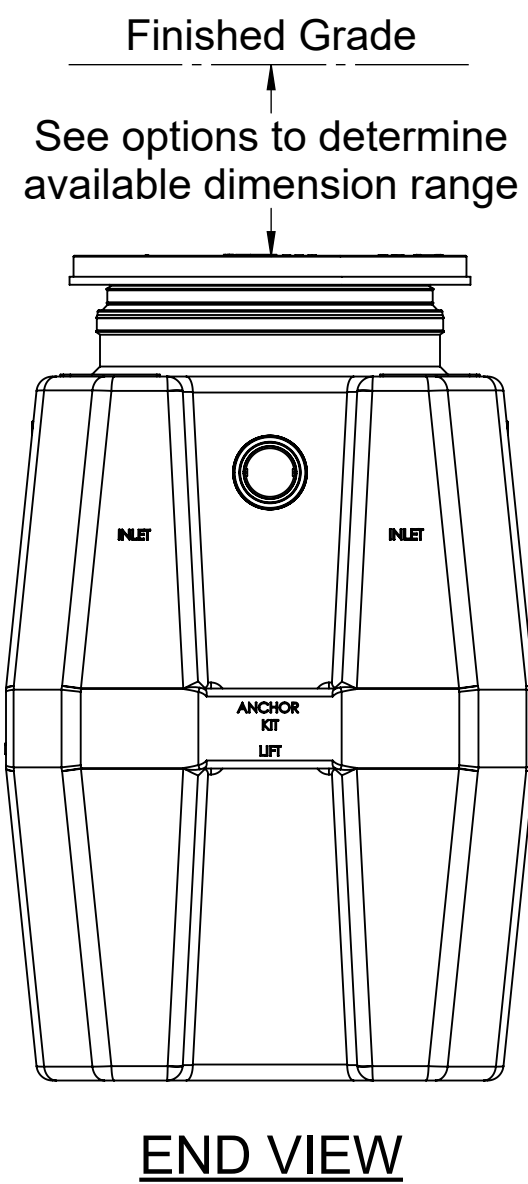
Striem neutralization tank model LB-275 shall be lifetime guaranteed and made in the USA. Tank shall be constructed of polyethylene. Tank shall be manufactured for above- or below-grade installation. Field-adjustable riser system is available as an option to bring manhole covers to grade. Tank liquid holding capacity shall be 250 gallons. Covers shall provide water/gas-tight seal and have a maximum 16,000 lbs. load capacity.

**THIRD PARTY STRUCTURAL ANALYSIS**

The LB-275 has been structurally analyzed in accordance with the requirements of IBC 2012 and ASCE/SEI 7 for direct burial. The maximum burial depth and backfill material are specified in our installation instructions. The structural design has been reviewed and sealed by a professional engineer registered in the state of California. A sealed structural analysis report is available upon request.



OPTIONS	
<b>Connection Options (Plain End Only)</b>	
<b>Inlet / Outlet</b>	
<input type="checkbox"/>	4"
<input type="checkbox"/>	6"
<b>Riser Options</b>	
<b>From Factory: Up to 5"</b>	
<input type="checkbox"/>	Up to 24": <b>SR24</b> (2)
<input type="checkbox"/>	Up to 39": <b>LR24</b> (2)
<input type="checkbox"/>	Up to 43": <b>SR24</b> (4)
<input type="checkbox"/>	Up to 58": <b>SR24</b> (2) + <b>LR24</b> (2)
<input type="checkbox"/>	Up to 72": <b>LR24</b> (4)
<input type="checkbox"/>	Up to 90": <b>SR24</b> (2) + <b>LR24</b> (4)
<b>- OR -</b>	
<input type="checkbox"/>	<b>CPRK</b> (2): 11" - 90" (See specification for more detail.)
<b>Additional Options</b>	
<input type="checkbox"/>	<b>HDK-2</b> : High Water Table Hold Down Kit
<input type="checkbox"/>	<b>CC-1</b> : Command Center pH Monitoring Package
<input type="checkbox"/>	<b>SPK</b> : Sensor Placement Kit*
<input type="checkbox"/>	<b>Limestone</b> : 90%+ Calcium Carbonate (3,150 lbs.)
*Required with CC-1	



**PROPRIETARY AND CONFIDENTIAL**  
THE INFORMATION CONTAINED IN THIS DRAWING IS THE SOLE PROPERTY OF STRIEM, LLC. ANY REPRODUCTION IN PART OR AS A WHOLE WITHOUT THE WRITTEN PERMISSION OF STRIEM, LLC. IS PROHIBITED.

<b>MODEL NUMBER:</b>	LB-275
<b>DESCRIPTION:</b>	LAB BASIN™ POLYETHYLENE NEUTRALIZATION TANK
<b>DWG BY:</b>	ENG
<b>DATE:</b>	5/24/2024
<b>REV:</b>	1

<b>SPECIFICATION SHEET</b>	
Striem Kansas City, KS Tel: 913-222-1500 orders@striemco.com www.striemco.com	
Made in the U.S.A	