

SPECIFICATIONS

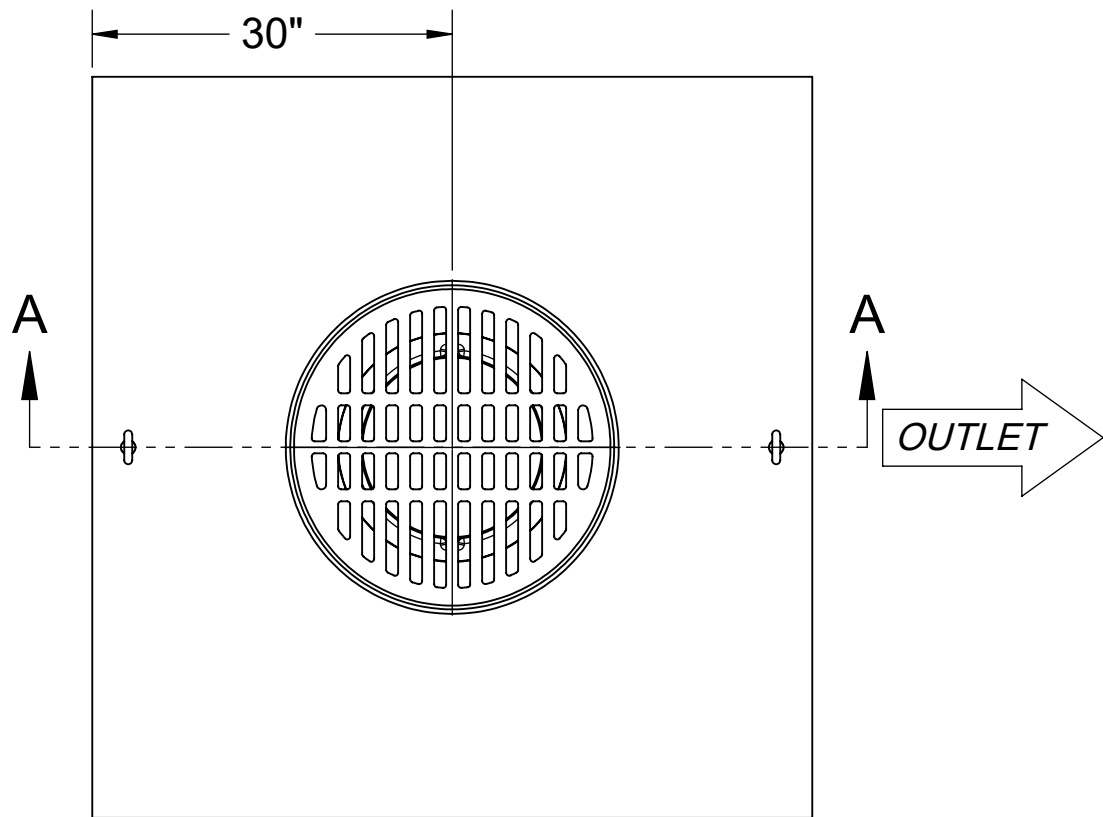
- 1. 6" Plain End outlet shown.
- 2. Liquid capacity: 500 gallons (66 cu. ft.).
- 3. Solids capacity: 400 gallons.
- 4. Basket capacity: 7 Gallons.
- 5. Unit weight: 900 lbs.
- 6. Maximum operating temperature 140 °F continuous.

NOTES

- 1. For gravity drainage applications only.
- 2. Do not use for pressure applications.
- 3. Cover placement allows full access to tank for proper maintenance.
- 4. Lifting lug set for easy install.
- 5. Maximum burial depth: 103" from standard cover height.

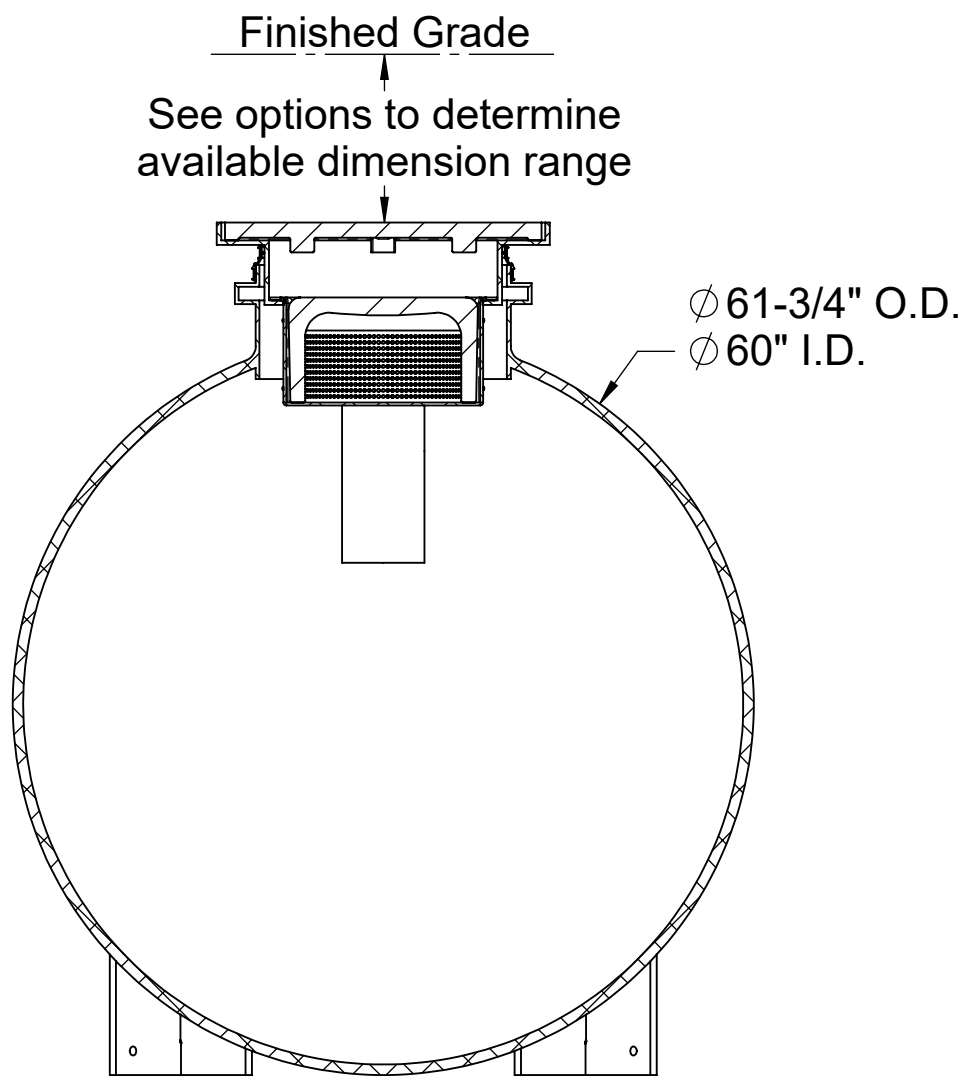
ENGINEER SPECIFICATION GUIDE

Striem solids interceptor model CB-500-G shall be lifetime guaranteed and made in the USA. Interceptor shall be constructed of polyethylene with 7/8" nominal wall thickness. Interceptor shall be manufactured for below-grade installation. Field-adjustable riser system is available as an option to bring manhole cover to grade. Interceptor liquid holding capacity shall be 500 gallons. Interceptor solids capacity shall be 400 gallons. BCB-7 basket solids capacity shall be 7 gallons. Cover shall be H20 rated cast iron grate.

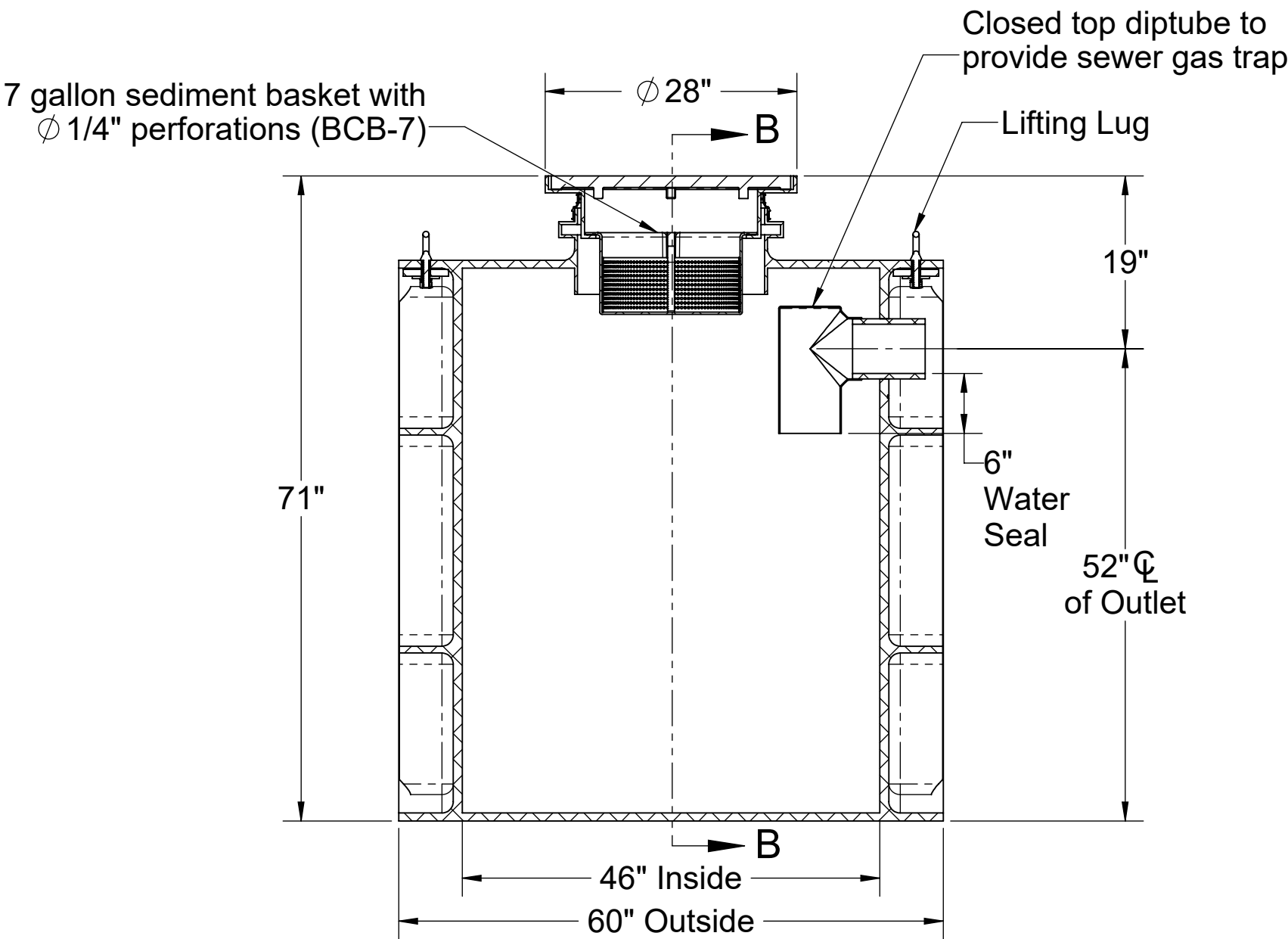


TOP VIEW

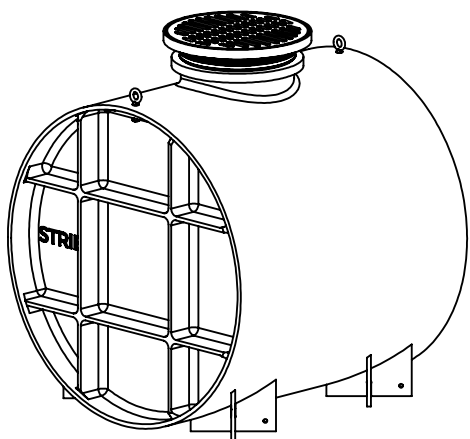
OPTIONS	
Connection Options (Plain End Only)	
Outlet	
<input type="checkbox"/> 4"	SELECTION REQUIRED
<input type="checkbox"/> 6"	
<input type="checkbox"/> 8"	
Riser Options	
From Factory: 0" - 2"*	
<input type="checkbox"/> 5" - 21": SR24	
<input type="checkbox"/> Up to 36": LR24	
<input type="checkbox"/> Up to 40": SR24 (2)	
<input type="checkbox"/> Up to 55": SR24 + LR24	
<input type="checkbox"/> Up to 69": LR24 (2)	
<input type="checkbox"/> Up to 87": SR24 + LR24 (2)	
<input type="checkbox"/> Up to 103": LR24 (3)	
*If in the range of 2" - 5", contact Striem for a custom solution.	
Additional Options	
<input type="checkbox"/> HDK-8: High Water Table Hold Down Kit	



SECTION B-B




SECTION A-A



PO IS NON-CANCELABLE  
ORDER IS NON-RETURNABLE

PROPRIETARY AND CONFIDENTIAL  
THE INFORMATION CONTAINED IN THIS DRAWING IS THE SOLE PROPERTY OF STRIEM, LLC.  
ANY REPRODUCTION IN PART OR AS A WHOLE WITHOUT THE WRITTEN PERMISSION OF STRIEM, LLC. IS PROHIBITED.

MODEL NUMBER:		CB-500-G		SPECIFICATION SHEET	
DESCRIPTION:				<div>Striem Kansas City, KS Tel: 913-222-1500 orders@striemco.com www.striemco.com</div> <div>Made in the U.S.A</div>	
POLYETHYLENE CATCH BASIN WITH H20 RATED CAST IRON GRATE AND BCB-7 SEDIMENT BASKET					
DWG BY:	ENG	DATE:	4/24/2025		