

SPECIFICATIONS

- 1. 1-1/2" or 2" FPT connections standard (polypropylene bushings included).
- 2. 4-1/4" gasketed top access port with captive hand-thread hardware.
- 3. Liquid capacity: 5.6 Gallons (1-1/2"); 5.3 Gallons (2")
- 4. Unit weight: 11 lbs. (dry); 58 lbs. (wet); 76.5 lbs. (wet w/ limestone).
- 5. Maximum operating temperature 140°F continuous.

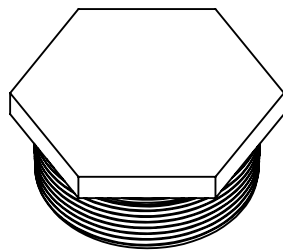
NOTES

- 1. Top inlet and side inlet options standard.
- 2. Optional vent connection standard.
- 3. Built-in sewer gas trap.
- 4. Bottom of tank must be supported if not sitting on floor. Support must hold at least 80 lbs. Bottom of tank designed to accommodate 4" plastic pipe (by others) as a support option.
- 5. Uses: Neutralization (w/ limestone) or dilution (no limestone).

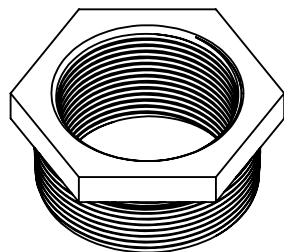
ENGINEER SPECIFICATION GUIDE

Striem neutralization tank model LB-5 shall be lifetime guaranteed and made in the USA. Tank shall be constructed of polyethylene. Tank shall be manufactured for above-grade installation. Tank shall be furnished with (2) inlets, (1) outlet, and (1) vent connection with bushings included to field-adapt to 1-1/2" or 2" drain line pipe size. Tank shall be watertight up to 36" head and contain an internal sewer gas trap. Tank shall have gasketed cover with captive hand-thread hardware.

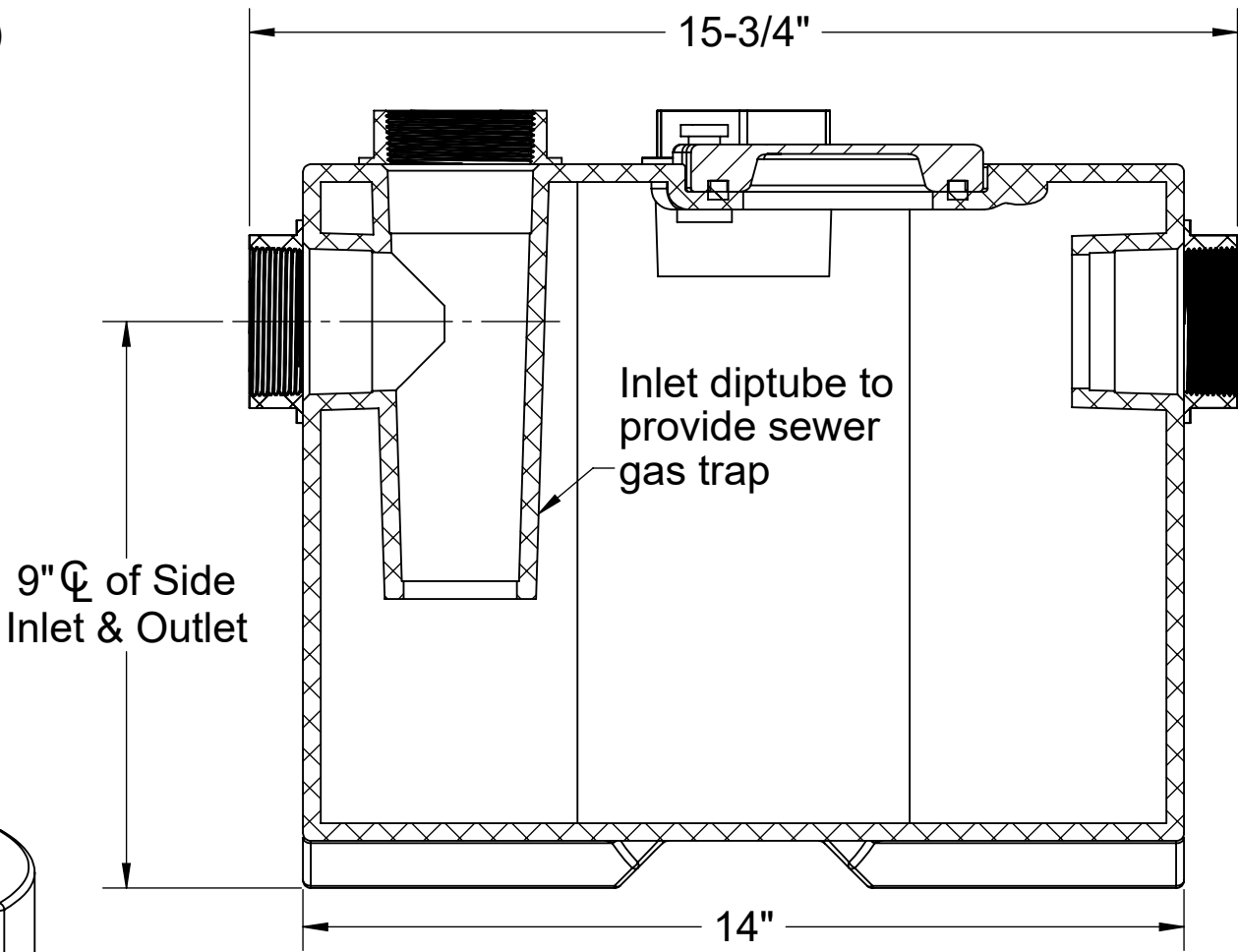
INCLUDED



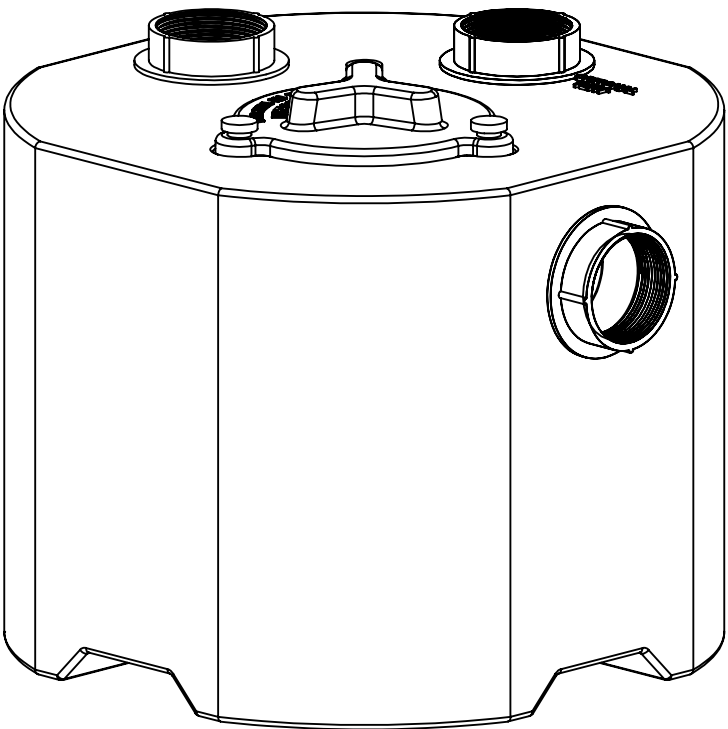
2" MPT Plug (2)



2" x 1-1/2" MPT Reducer (2)



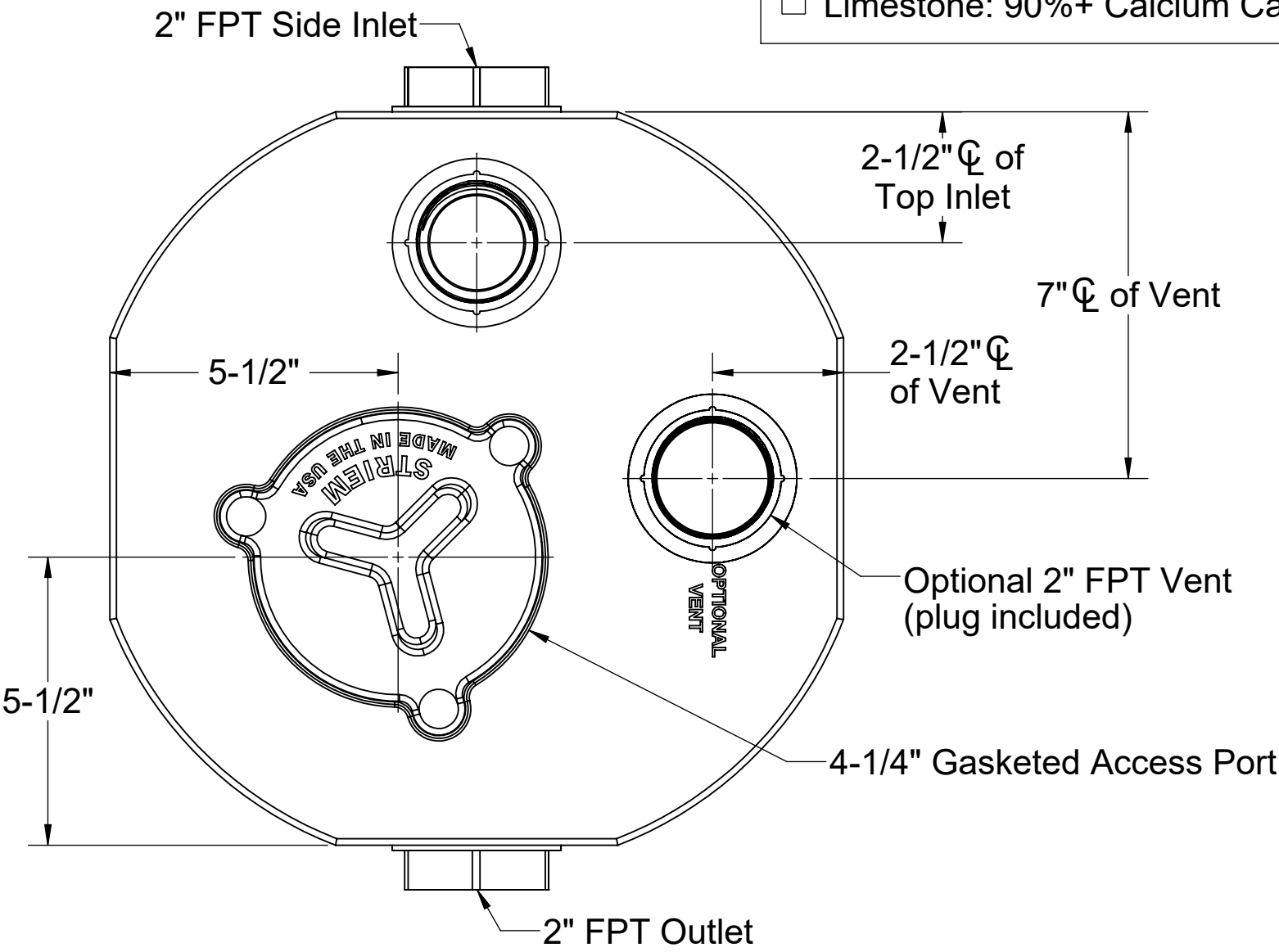
SECTION A-A



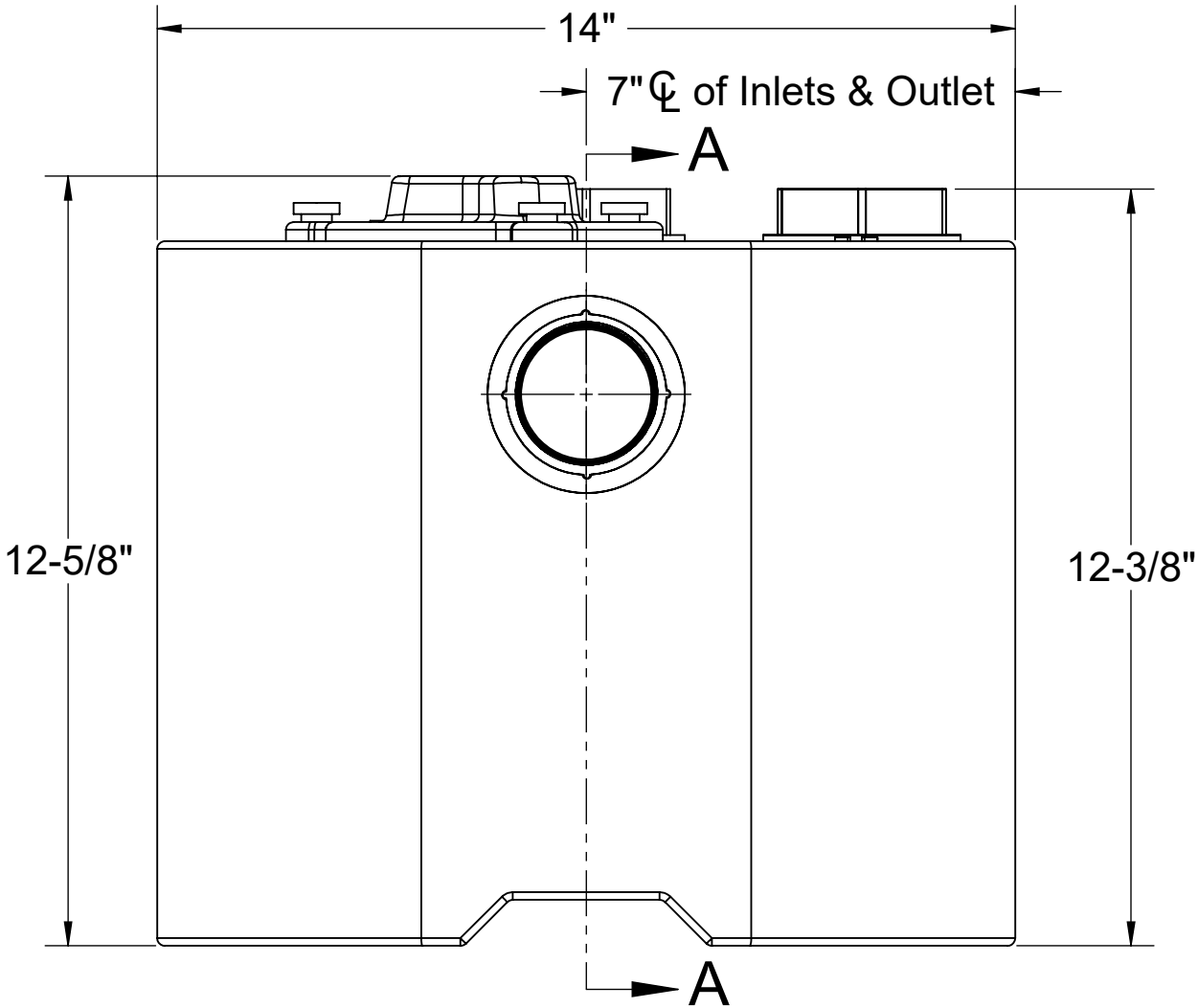
PROPRIETARY AND CONFIDENTIAL
THE INFORMATION CONTAINED IN THIS DRAWING IS THE SOLE PROPERTY OF STRIEM, LLC.
ANY REPRODUCTION IN PART OR AS A WHOLE WITHOUT THE WRITTEN PERMISSION OF STRIEM, LLC. IS PROHIBITED.

OPTIONS

☐ Limestone: 90%+ Calcium Carbonate (50 lbs.)



TOP VIEW



FRONT VIEW

MODEL NUMBER: LB-5

DESCRIPTION:

LAB RAT™
POLYETHYLENE POINT OF USE
NEUTRALIZATION TANK

DWG BY: ENG DATE: 5/6/2025 REV: 0

SPECIFICATION SHEET

Striem
Kansas City, KS
Tel: 913-222-1500
orders@striemco.com
www.striemco.com

Made in the U.S.A

