

SPECIFICATIONS

- 1. 4" Plain End outlet.
- 2. 1/8" per foot built-in slope.
- 3. Liquid Capacity: 65 Gallons.
- 4. Maximum operating temperature 165°F intermittent.

NOTES

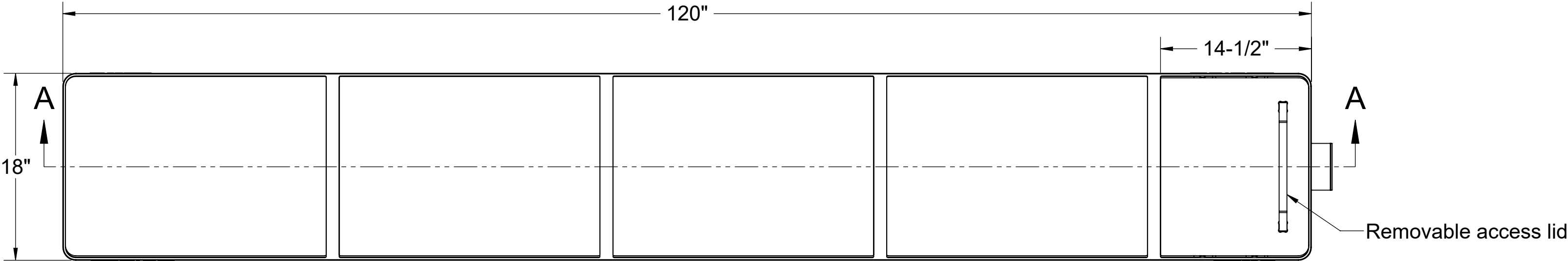
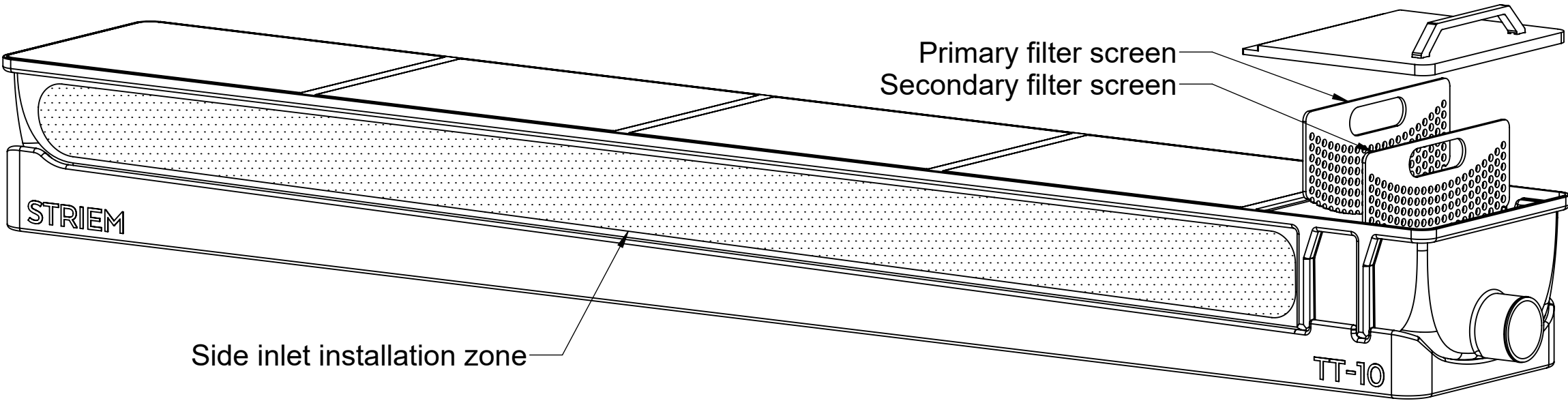
- 1. All inlet connections are field installed.
- 2. Filter screens equipped with \varnothing 1/2" perforations.

ENGINEER SPECIFICATION GUIDE

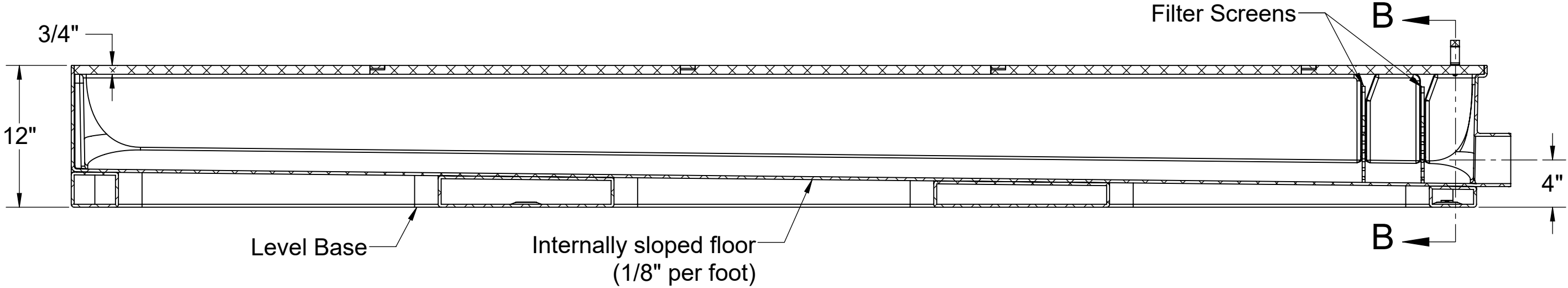
Striem Tuff Trough model TT-10 shall be lifetime guaranteed and made in the USA. Trough shall be constructed of polyethylene with 1/4" nominal wall thickness. Trough shall have removable, corrosion-resistant primary filter screen and secondary filter screen. Trough shall be furnished with a nested cover, internally sloped floor, and suitable for above- or below-grade installation. Trough shall be equipped with a plain end molded-in outlet. Inlet connections are field installed. Maximum operating temperature 165°F intermittent. Trough shall be certified to IAPMO/ANSI/CAN Z1167 and carry a UPC listing.

OPTIONS

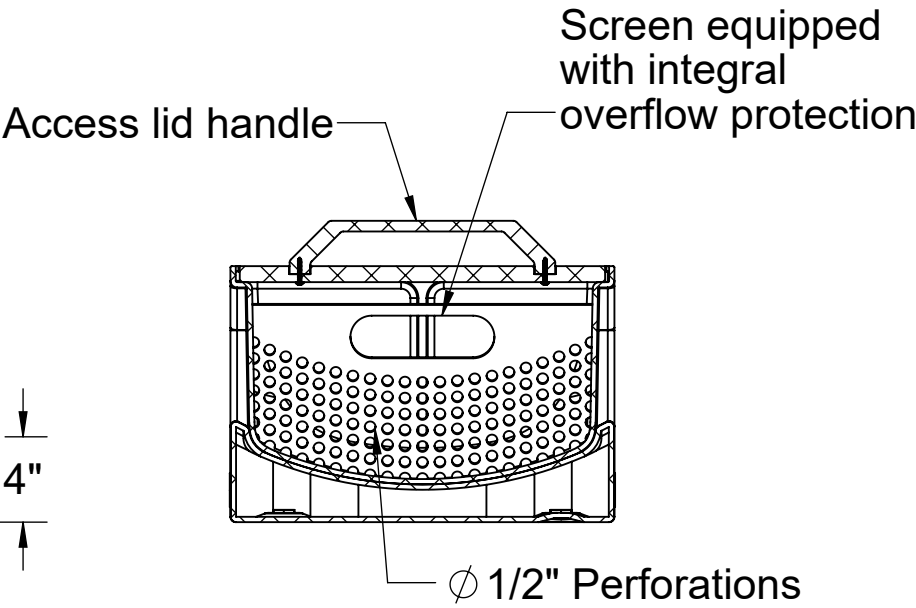
☐ IG-3: 3" Inlet Grommet QTY: _____



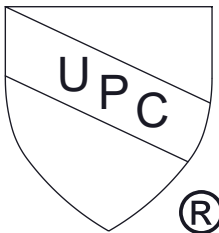
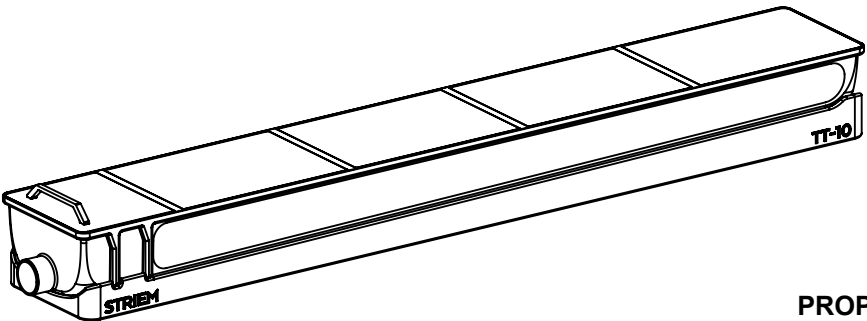
TOP VIEW




SECTION A-A



SECTION B-B



PROPRIETARY AND CONFIDENTIAL
THE INFORMATION CONTAINED IN THIS DRAWING IS THE SOLE PROPERTY OF STRIEM, LLC.
ANY REPRODUCTION IN PART OR AS A WHOLE WITHOUT THE WRITTEN PERMISSION OF STRIEM, LLC. IS PROHIBITED.

MODEL NUMBER: TT-10			SPECIFICATION SHEET	
DESCRIPTION: TUFF TROUGH POLYETHYLENE DRAIN TROUGH 65 GALLON CAPACITY			Striem Kansas City, KS Tel: 913-222-1500 orders@striemco.com www.striemco.com Made in the U.S.A	
DWG BY: ENG	DATE: 4/28/2025	REV: 0		