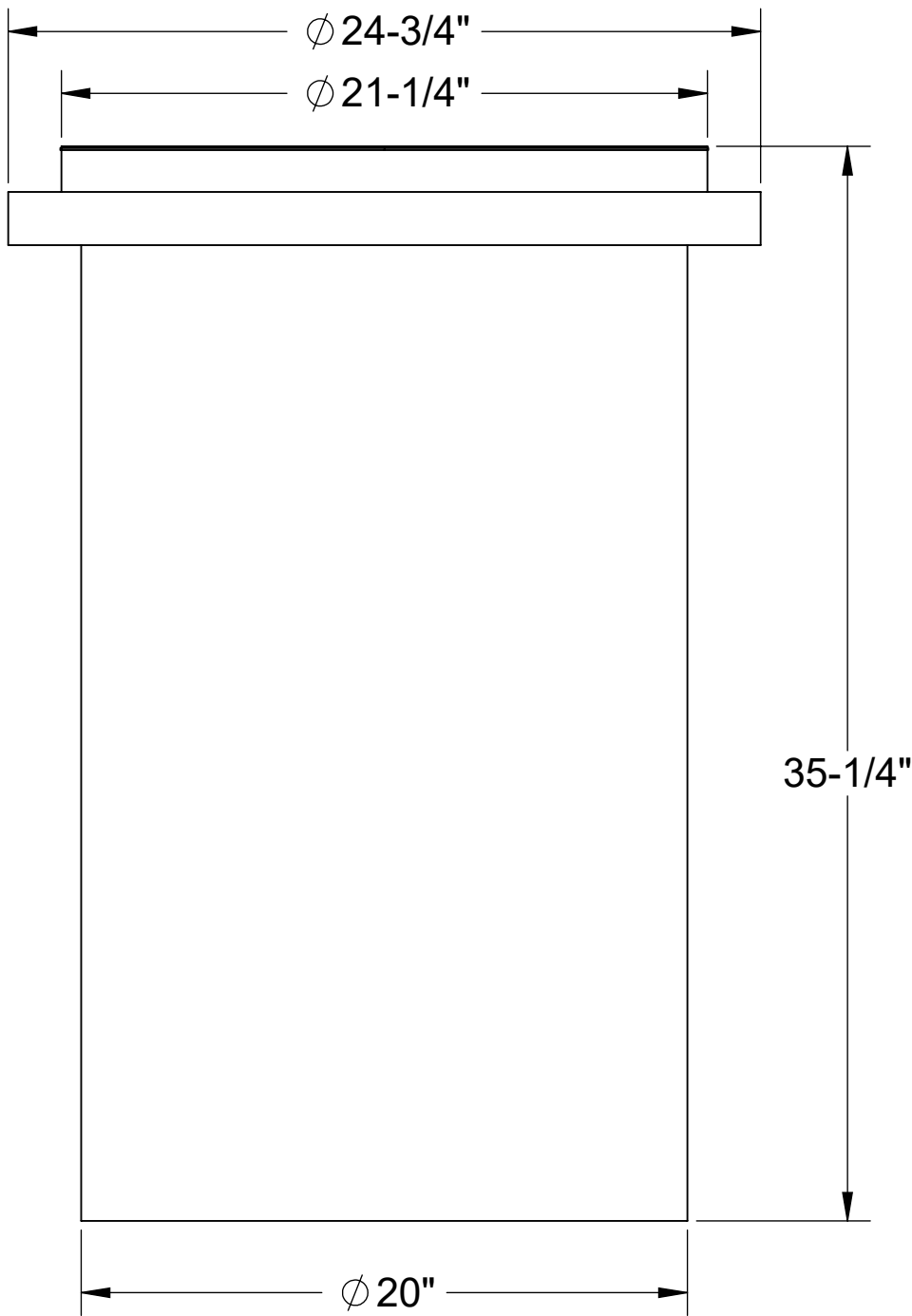


SPECIFICATIONS

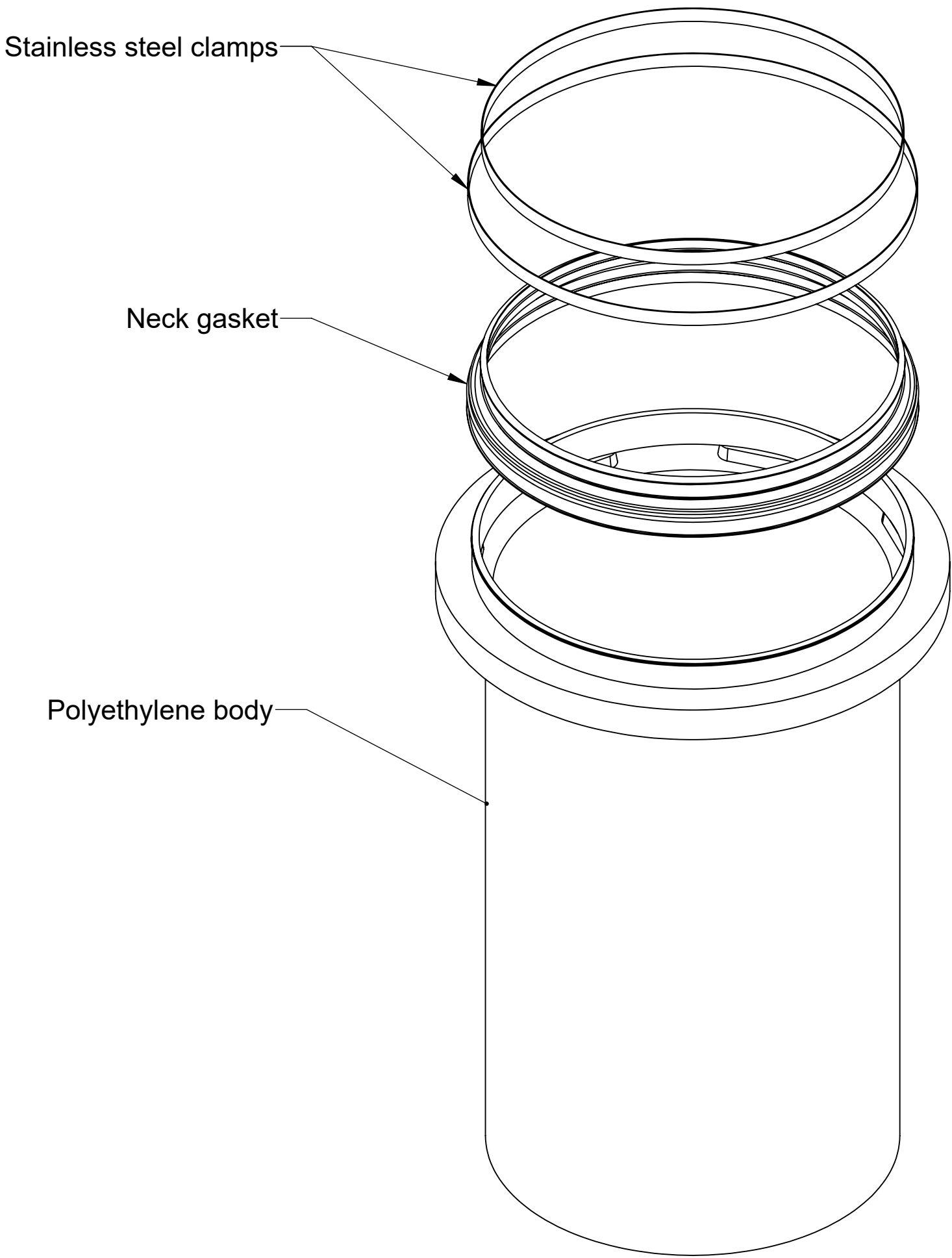
- 1. Molded polyethylene body.
- 2. PP blend neck gasket.
- 3. Stainless steel clamps.
- 4. Unit weight: 36 lbs.

ENGINEER SPECIFICATION GUIDE


TeleGlide field adjustable riser system to consist of rotationally molded polyethylene body, PP blend gasket and stainless steel clamps. Risers shall allow onsite adjustability of cover to grade.



FRONT VIEW



EXPLODED VIEW

MODEL NUMBER:		LR-24	SPECIFICATION SHEET		
DESCRIPTION:			<div>Striem Kansas City, KS Tel: 913-222-1500 orders@striemco.com www.striemco.com</div> <div>Made in the U.S.A</div>		
TELEGLIDE™ RISER EXTENSION SYSTEM					
DWG BY:	ENG	DATE:	5/10/2023		REV: