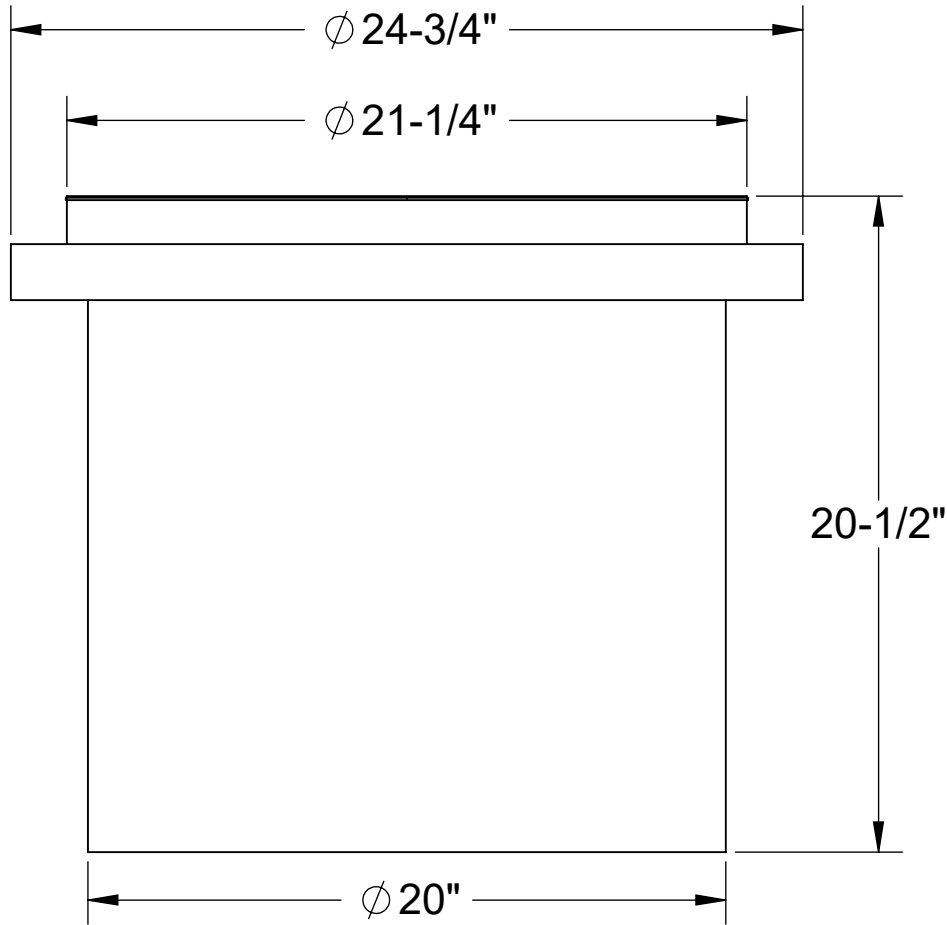


SPECIFICATIONS

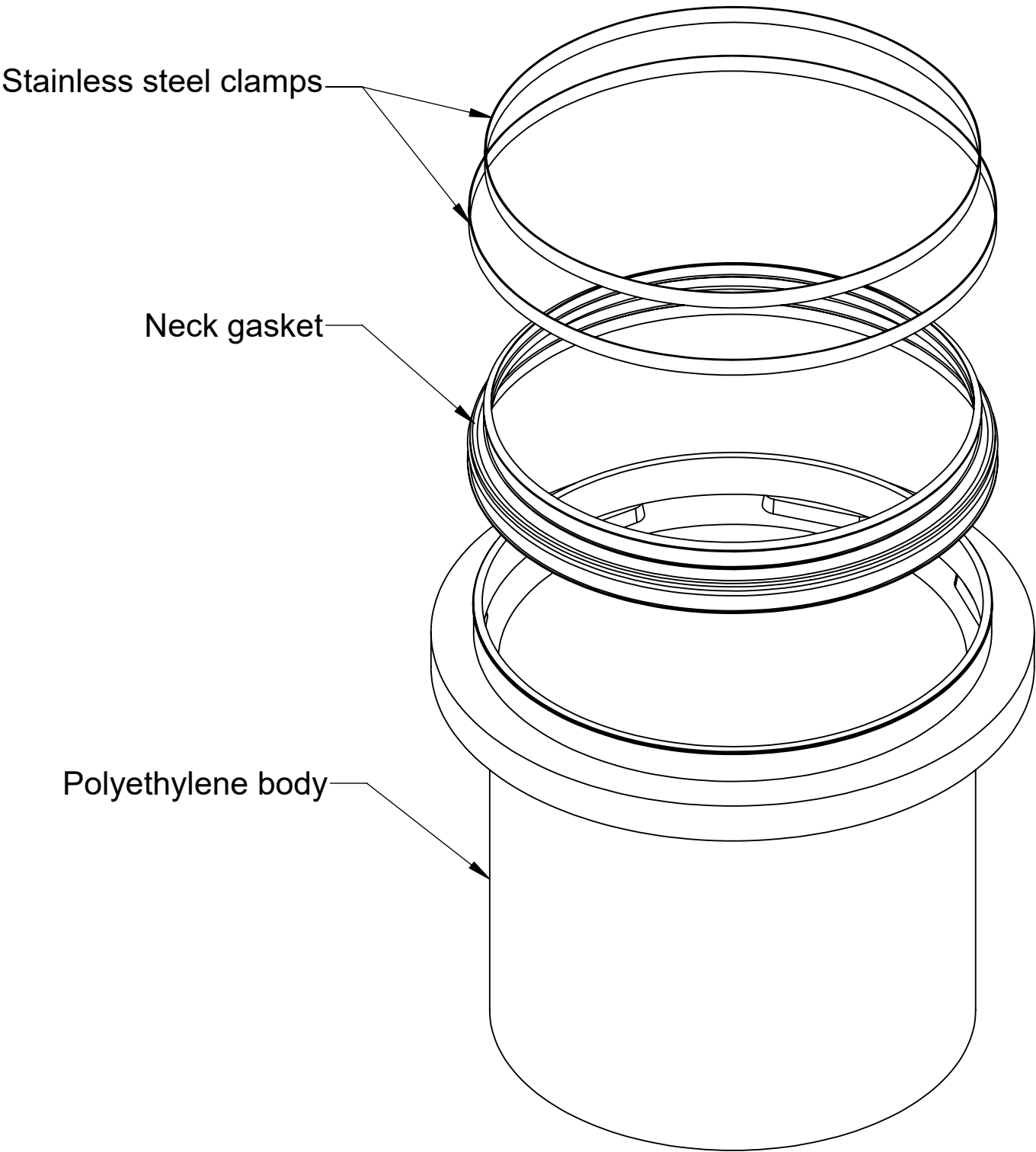
- 1. Molded polyethylene body.
- 2. PP blend neck gasket.
- 3. Stainless steel clamps.
- 4. Unit weight: 23 lbs.

ENGINEER SPECIFICATION GUIDE

TeleGlide field adjustable riser system to consist of rotationally molded polyethylene body, PP blend gasket and stainless steel clamps. Risers shall allow onsite adjustability of cover to grade.



FRONT VIEW



EXPLODED VIEW

MODEL NUMBER: SR-24

DESCRIPTION:

TELEGLIDE™ RISER EXTENSION SYSTEM

DWG BY: ENG

DATE: 5/9/2023

REV: 0

SPECIFICATION SHEET

Striem
Kansas City, KS
Tel: 913-222-1500
orders@striemco.com
www.striemco.com

Made in the U.S.A

