

SPECIFICATIONS

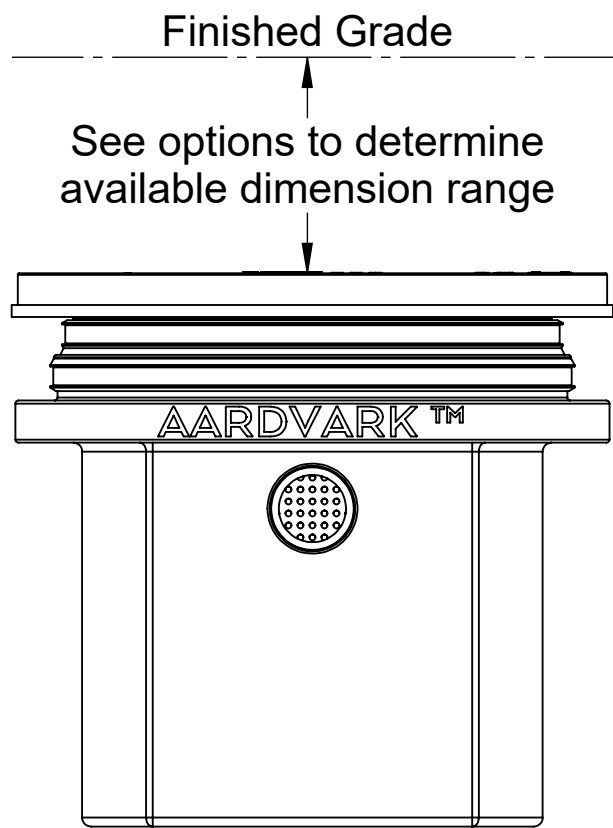
- 1. 3" Plain End inlet/outlets, C24-M cover standard.
- 2. Max flow rate: 50 GPM.
- 3. Filter Basket solids capacity: 7 gallons.
- 4. Screen perforations: 1/4" openings.
- 5. Unit weight w/ standard cover: 65 lbs.
- 6. Maximum operating temperature 140°F continuous.

NOTES.

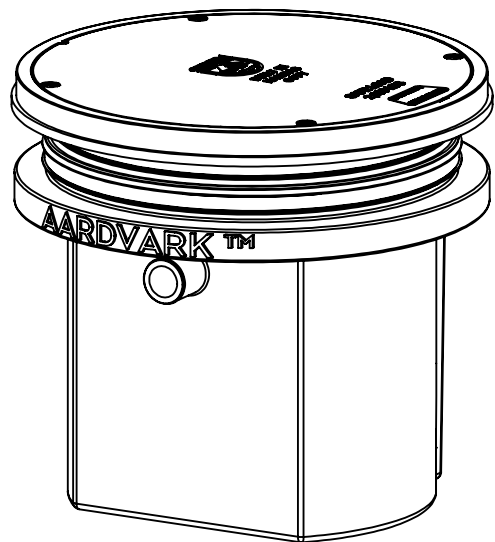
- 1. Cover placement allows full access to tank for proper maintenance.
- 2. Basket inserts in one orientation.
- 3. Basket allows for sufficient flow in the presence of solids, limiting the chance for a backup.
- 4. The optional low outlet allows for static water level to remain below the basket. This keeps the basket dry during maintenance and also creates a reservoir to handle temporary flow surge.
- 5. Handle may be extended using 1-1/2" PVC to ensure ease of basket removal when risers are in use.
- 6. Maximum burial depth: 39" from standard cover height.

ENGINEER SPECIFICATION GUIDE

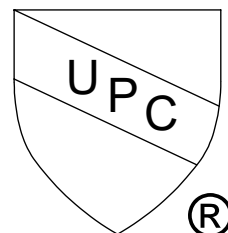
Striem AA-3 solids interceptor shall be lifetime guaranteed and made in the USA. Interceptor shall be constructed of polyethylene. Interceptor shall be certified to IAPMO/ANSI/CAN Z1167 and carry a UPC listing. Interceptor shall be furnished for above- or below-grade installation. Field-adjustable riser system is available as an option to bring manhole cover to grade. Interceptor shall have removable, corrosion-resistant filter basket. Interceptor shall be equipped with high and low outlet options. Filter basket solids capacity shall be 7 gallons. Cover shall be water/gas-tight with a minimum 2,000 lbs. load capacity.



END VIEW

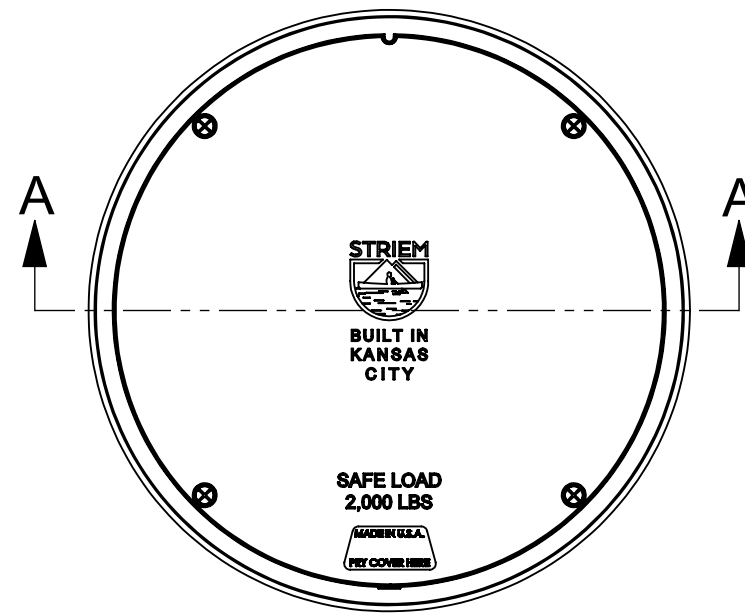


US Patent No.  
US10786761B2

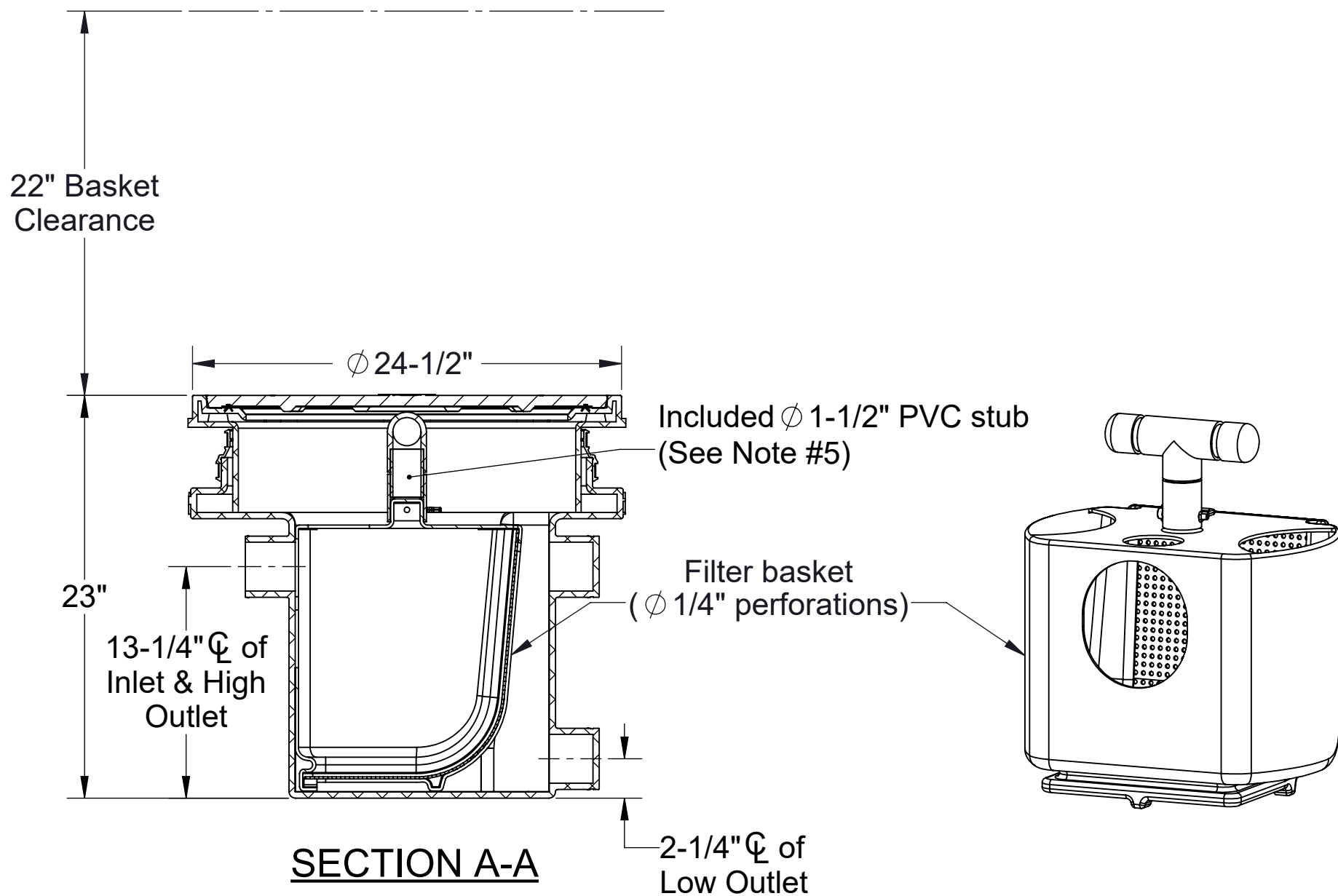


PO IS NON-  
CANCELABLE  
ORDER IS NON-  
RETURNABLE

PROPRIETARY AND CONFIDENTIAL  
THE INFORMATION CONTAINED IN THIS DRAWING IS THE SOLE PROPERTY OF STRIEM, LLC.  
ANY REPRODUCTION IN PART OR AS A WHOLE WITHOUT THE WRITTEN PERMISSION OF STRIEM, LLC. IS PROHIBITED.



TOP VIEW



SECTION A-A

OPTIONS

Riser Options

- From Factory: Up to 5"
- ☐ Up to 24": SR-24
  - ☐ Up to 39": LR-24

Additional Options

- ☐ C24-HP: H20 Rated Pickable Cast Iron Cover
  - ☐ Anchor Flange: High Water Table Anchor Flange\*
- \*Anchor flange will raise overall height by 3/4"

SPECIFICATION SHEET

MODEL NUMBER: AA-3

DESCRIPTION:

AARDVARK™  
BASKET STYLE SOLIDS INTERCEPTOR

Striem  
Kansas City, KS  
Tel: 913-222-1500  
orders@striemco.com  
www.striemco.com

Made in the U.S.A



DWG BY: ENG    DATE: 9/15/2025    REV: 1