

SPECIFICATIONS

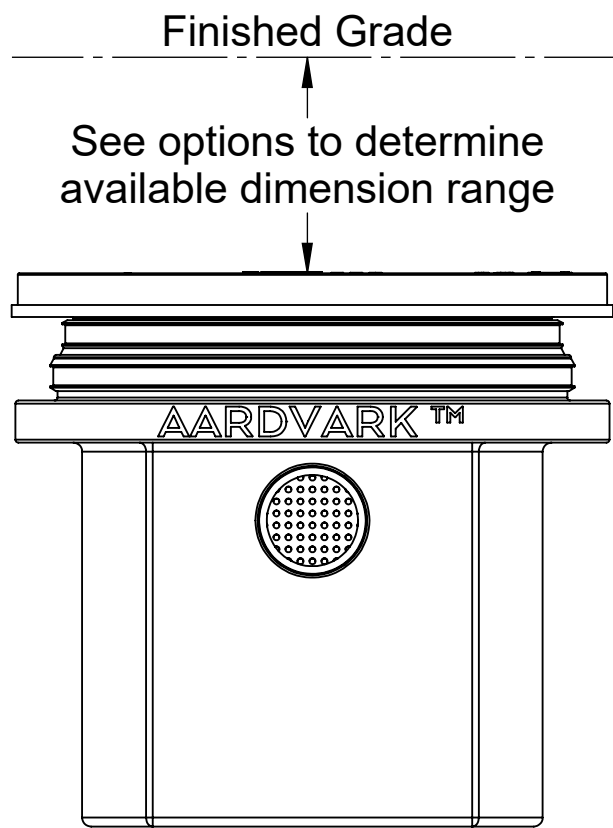
- 1. 4" Plain End inlet/outlets, C24-M cover standard.
- 2. Max flow rate: 75 GPM.
- 3. Filter Basket solids capacity: 7 gallons.
- 4. Screen perforations: 1/4" openings.
- 5. Unit weight w/ standard cover: 65 lbs.
- 6. Maximum operating temperature 140°F continuous.

NOTES.

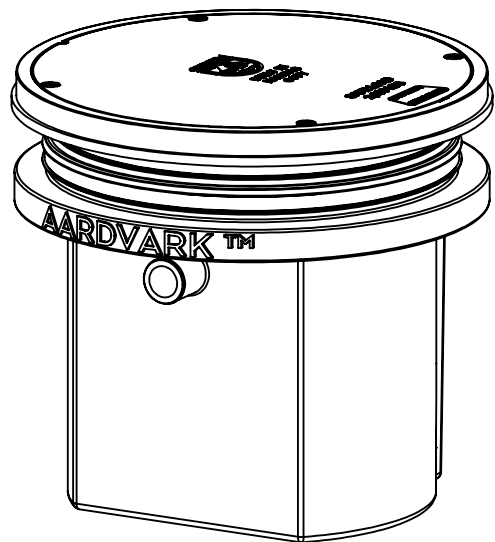
- 1. Cover placement allows full access to tank for proper maintenance.
- 2. Basket inserts in one orientation.
- 3. Basket allows for sufficient flow in the presence of solids, limiting the chance for a backup.
- 4. The optional low outlet allows for static water level to remain below the basket. This keeps the basket dry during maintenance and also creates a reservoir to handle temporary flow surge.
- 5. Handle may be extended using 1-1/2" PVC to ensure ease of basket removal when risers are in use.
- 6. Maximum burial depth: 39" from standard cover height.

ENGINEER SPECIFICATION GUIDE

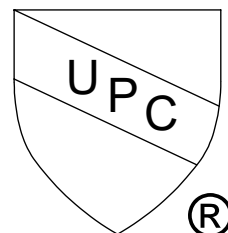
Striem AA-4 solids interceptor shall be lifetime guaranteed and made in the USA. Interceptor shall be constructed of polyethylene. Interceptor shall be certified to IAPMO/ANSI/CAN Z1167 and carry a UPC listing. Interceptor shall be furnished for above- or below-grade installation. Field-adjustable riser system is available as an option to bring manhole cover to grade. Interceptor shall have removable, corrosion-resistant filter basket. Interceptor shall be equipped with high and low outlet options. Filter basket solids capacity shall be 7 gallons. Cover shall be water/gas-tight with a minimum 2,000 lbs. load capacity.



END VIEW

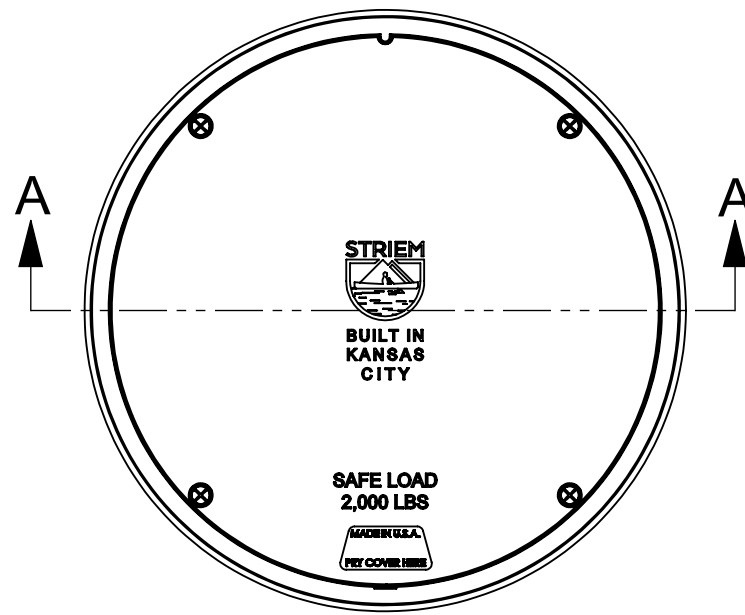


US Patent No.
US10786761B2

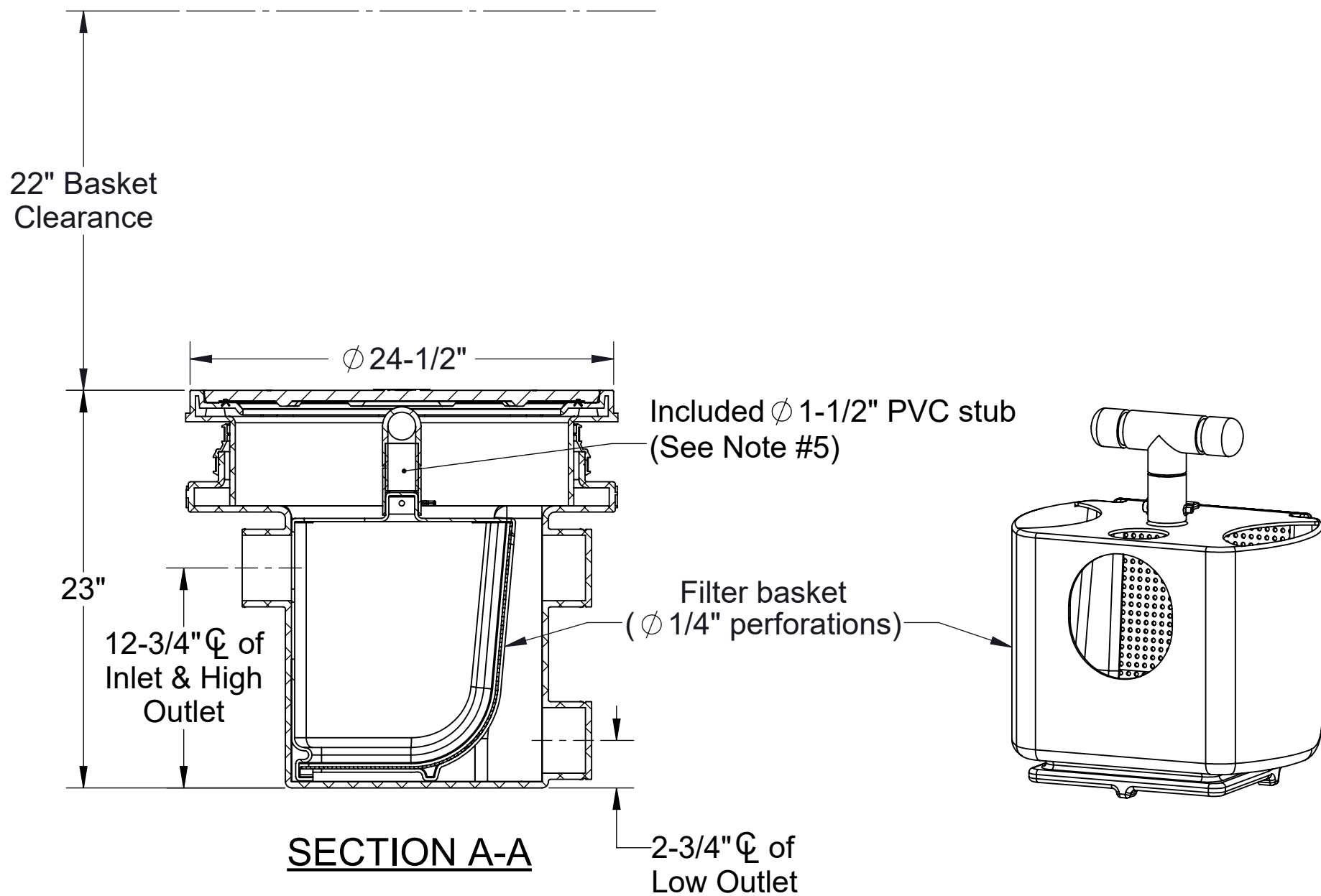


PO IS NON-
CANCELABLE
ORDER IS NON-
RETURNABLE

PROPRIETARY AND CONFIDENTIAL
THE INFORMATION CONTAINED IN THIS DRAWING IS THE SOLE PROPERTY OF STRIEM, LLC.
ANY REPRODUCTION IN PART OR AS A WHOLE WITHOUT THE WRITTEN PERMISSION OF STRIEM, LLC. IS PROHIBITED.



TOP VIEW



SECTION A-A

OPTIONS

Riser Options

- From Factory: Up to 5"
- Up to 24": SR-24
- Up to 39": LR-24

Additional Options

- C24-HP: H2O Rated Pickable Cast Iron Cover
 - Anchor Flange: High Water Table Anchor Flange*
- *Anchor flange will raise overall height by 3/4"

MODEL NUMBER:

AA-4

DESCRIPTION:

AARDVARK™
BASKET STYLE SOLIDS INTERCEPTOR

DWG BY: ENG

DATE: 9/15/2025

REV: 1

SPECIFICATION SHEET

Striem
Kansas City, KS
Tel: 913-222-1500
orders@striemco.com
www.striemco.com

Made in the U.S.A

