

SPECIFICATIONS

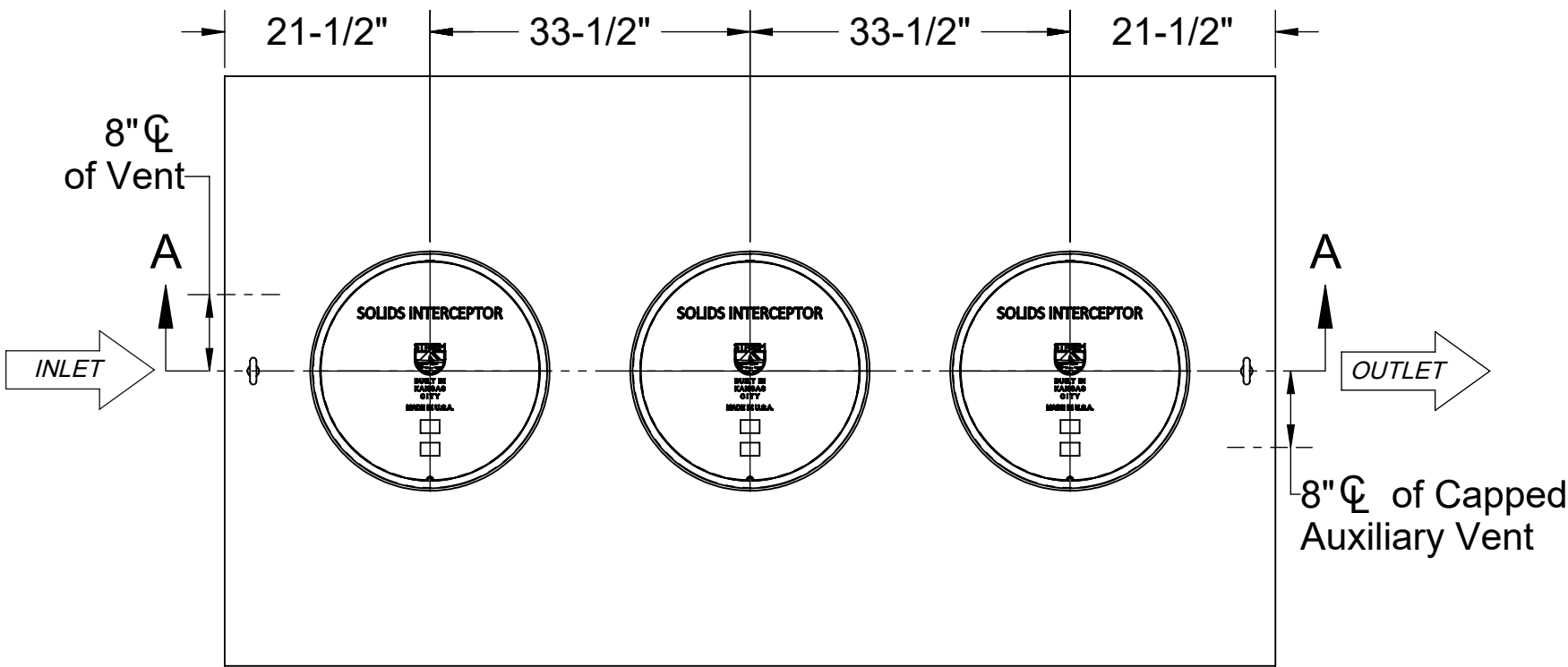
- 1. 6" Plain End inlet/outlet shown, 3" Plain End vents, C24-HP covers standard.
- 2. Liquid capacity: 1000 gallons (133 cu. ft.).
- 3. Solids capacity: 477 gallons.
- 4. Unit weight w/ standard covers: 1324 lbs.
- 5. Maximum operating temperature 140°F continuous.

NOTES

- 1. For gravity drainage applications only.
- 2. Do not use for pressure applications.
- 3. Capped auxiliary vent provided to allow flexibility with vent piping and design. Provided cap can be moved to unused vent location, or discarded if two chamber vents are required per local code.
- 4. Cover placement allows full access to tank for proper maintenance.
- 5. Lifting lug set for easy install.
- 6. Maximum burial depth: 106" from standard cover height.

ENGINEER SPECIFICATION GUIDE

Striem solids interceptor model CB-1000-S shall be lifetime guaranteed and made in the USA. Interceptor shall be constructed of polyethylene with 7/8" nominal wall thickness. Interceptor shall be manufactured for below-grade installation. Field-adjustable riser system is available as an option to bring manhole covers to grade. Interceptor liquid holding capacity shall be 1000 gallons and solids capacity shall be 477 gallons. Covers shall be H20 rated pickable cast iron.



TOP VIEW

OPTIONS

Connection Options (Plain End Only)

Inlet / Outlet

- ☐ 4"
- ☐ 6"
- ☐ 8"

SELECTION  
REQUIRED

Riser Options

From Factory: 0" - 5"

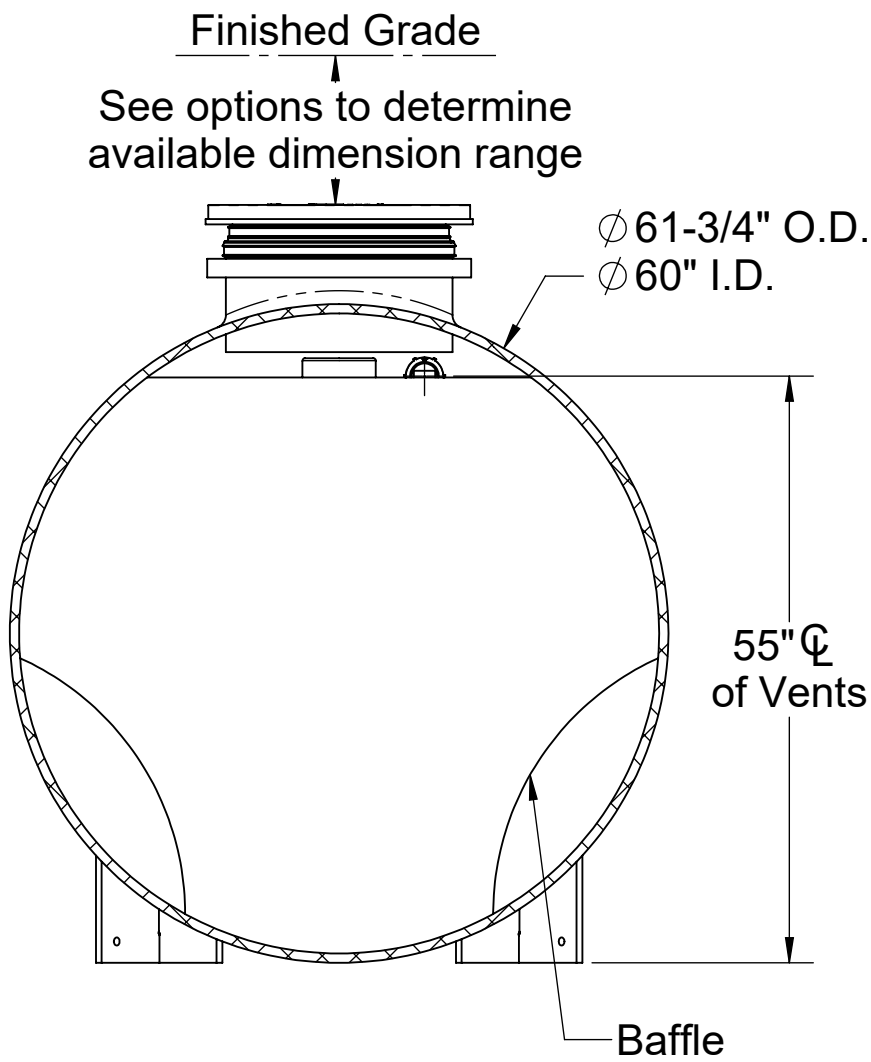
- ☐ Up to 24": **SR24** (3)
- ☐ Up to 39": **LR24** (3)
- ☐ Up to 43": **SR24** (6)
- ☐ Up to 58": **SR24** (3) + **LR24** (3)
- ☐ Up to 72": **LR24** (6)
- ☐ Up to 90": **SR24** (3) + **LR24** (6)
- ☐ Up to 106": **LR24** (9)

- OR -

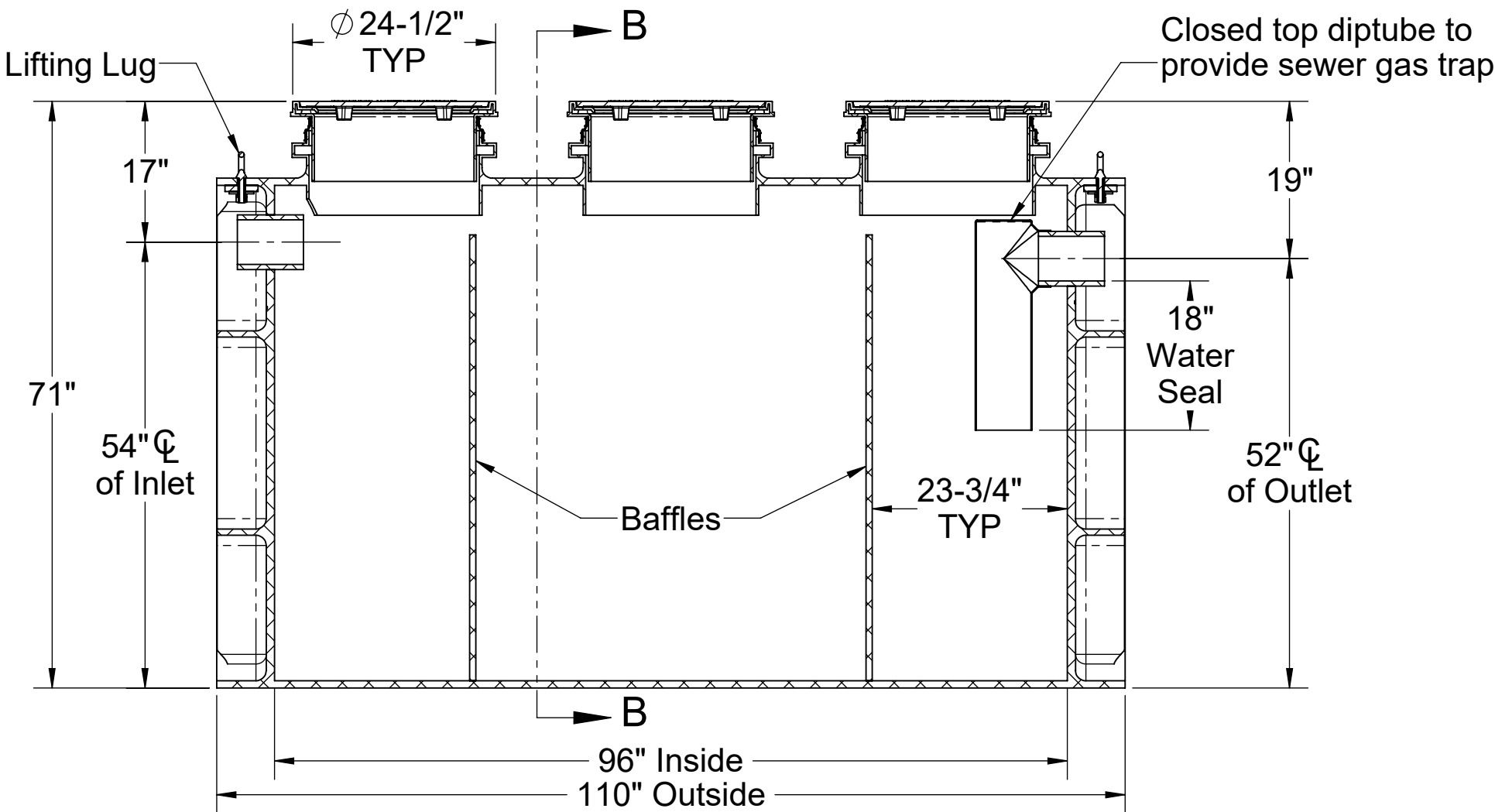
- ☐ **CPRK** (3): 11" - 106" (See specification for more detail.)

Additional Options

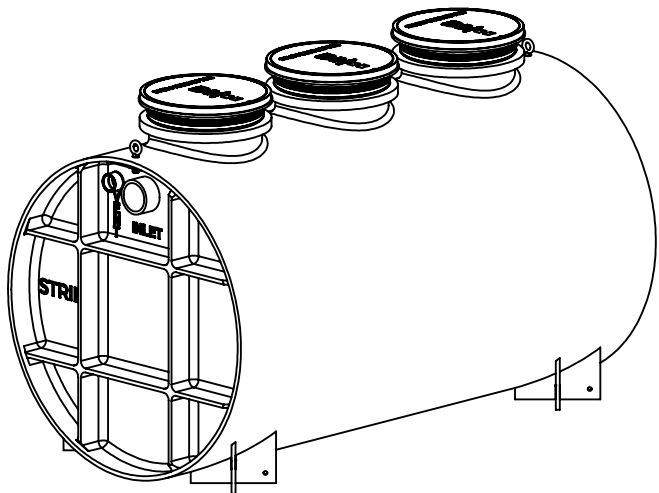
- ☐ **C24-M** (3): 2,000 lbs. Rated Bolted Composite Covers
- ☐ **HDK-5**: High Water Table Hold Down Kit



SECTION B-B



SECTION A-A



PO IS NON-CANCELABLE  
ORDER IS NON-RETURNABLE

PROPRIETARY AND CONFIDENTIAL  
THE INFORMATION CONTAINED IN THIS DRAWING IS THE SOLE PROPERTY OF STRIEM, LLC.  
ANY REPRODUCTION IN PART OR AS A WHOLE WITHOUT THE WRITTEN PERMISSION OF STRIEM, LLC. IS PROHIBITED.

MODEL NUMBER: CB-1000-S

DESCRIPTION:

POLYETHYLENE CATCH BASIN  
1000 GALLON CAPACITY

DWG BY: ENG

DATE: 9/15/2025

REV: 1

SPECIFICATION SHEET

Striem  
Kansas City, KS  
Tel: 913-222-1500  
orders@striemco.com  
www.striemco.com

Made in the U.S.A

