

SPECIFICATIONS

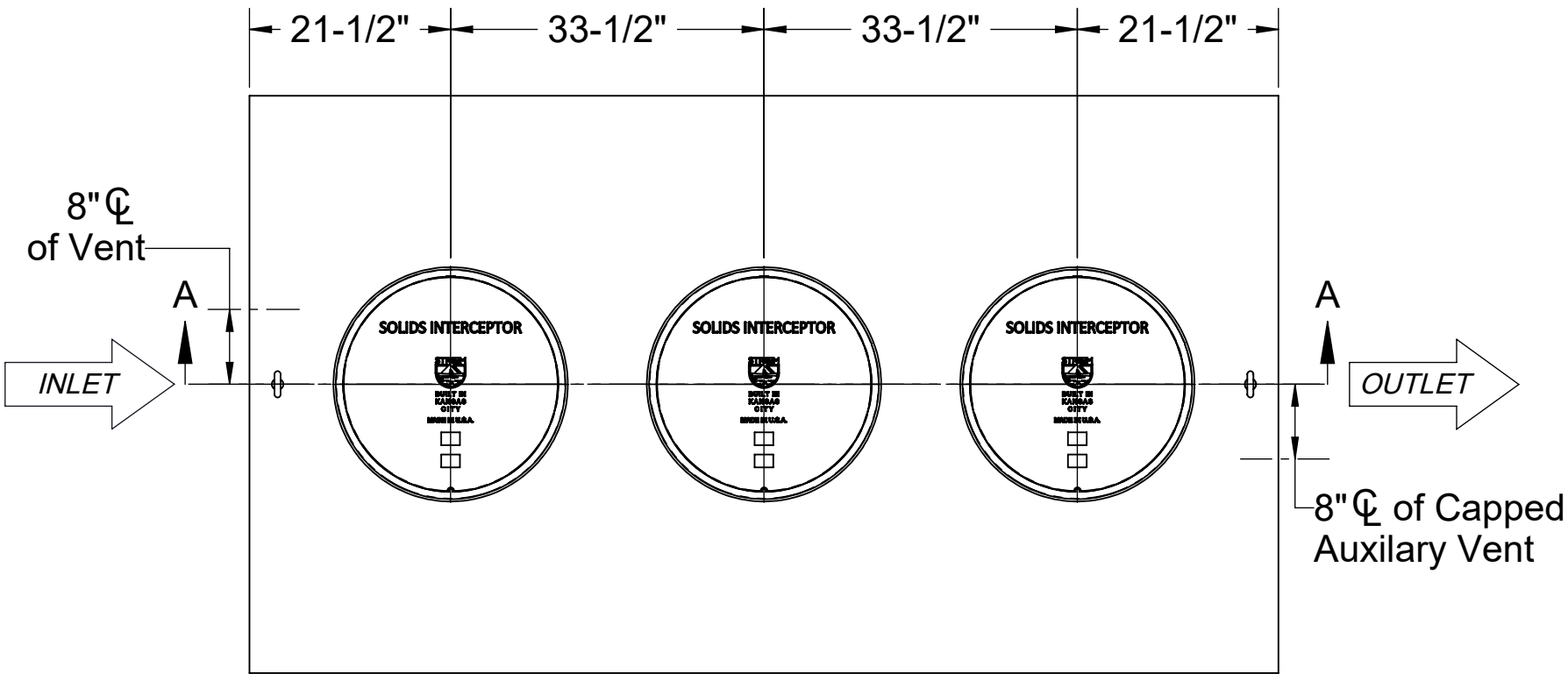
- 1. 6" Plain End inlet/outlet shown, 3" Plain End vents, C24-HP covers standard.
- 2. Liquid capacity: 1000 gallons (133 cu. ft.).
- 3. Solids capacity: 880 gallons.
- 4. Unit weigh w/ standard covers: 1364 lbs.
- 5. Maximum operating temperature: 140 °F continuous.

NOTES

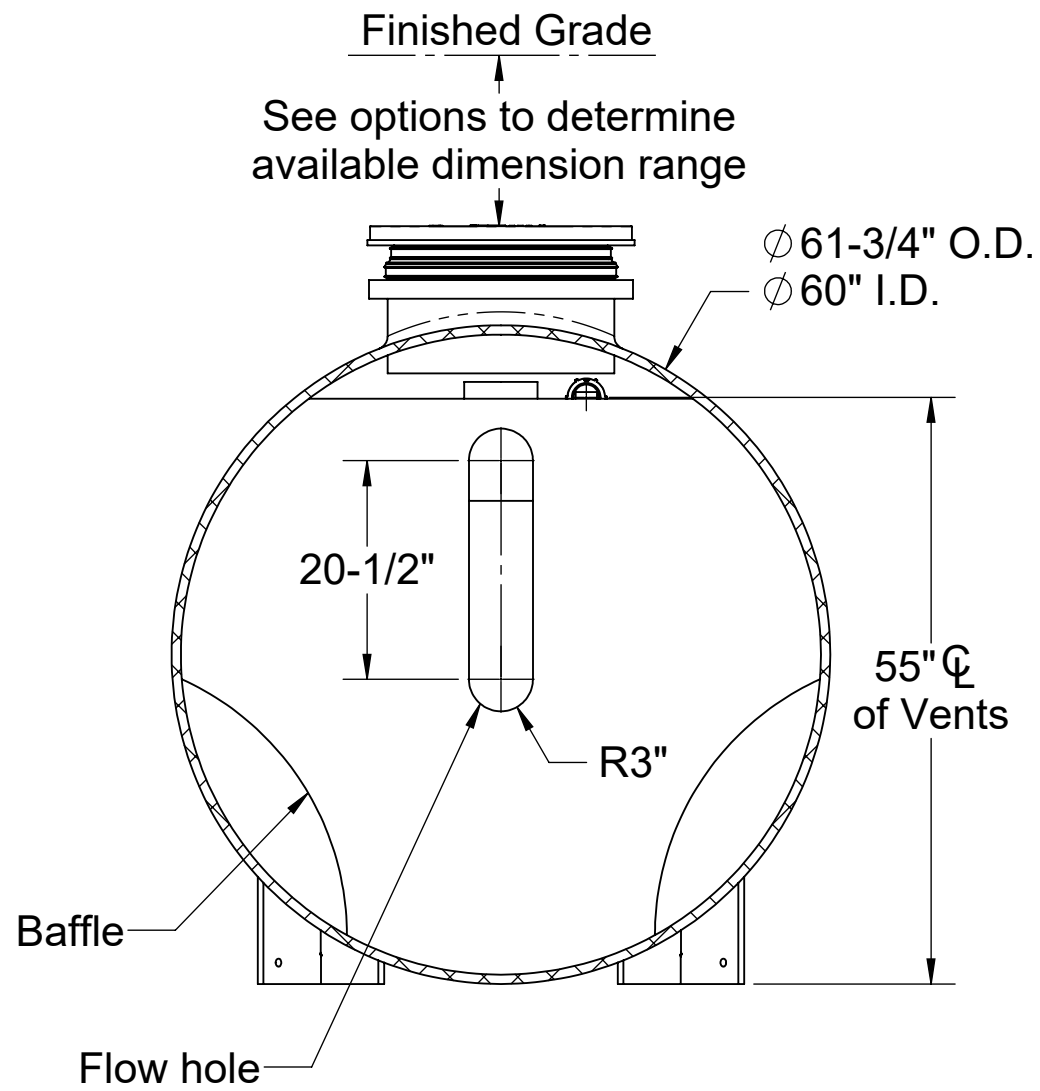
- 1. For gravity drainage applications only.
- 2. Do not use for pressure applications.
- 3. Capped auxiliary vent provided to allow flexibility with vent piping and design. Provided cap can be moved to unused vent location, or discarded if two chamber vents are required per local code.
- 4. Cover placement allows full access to tank for proper maintenance.
- 5. Lifting lug set for easy install.
- 6. Maximum burial depth: 106" from standard cover height.

ENGINEER SPECIFICATION GUIDE

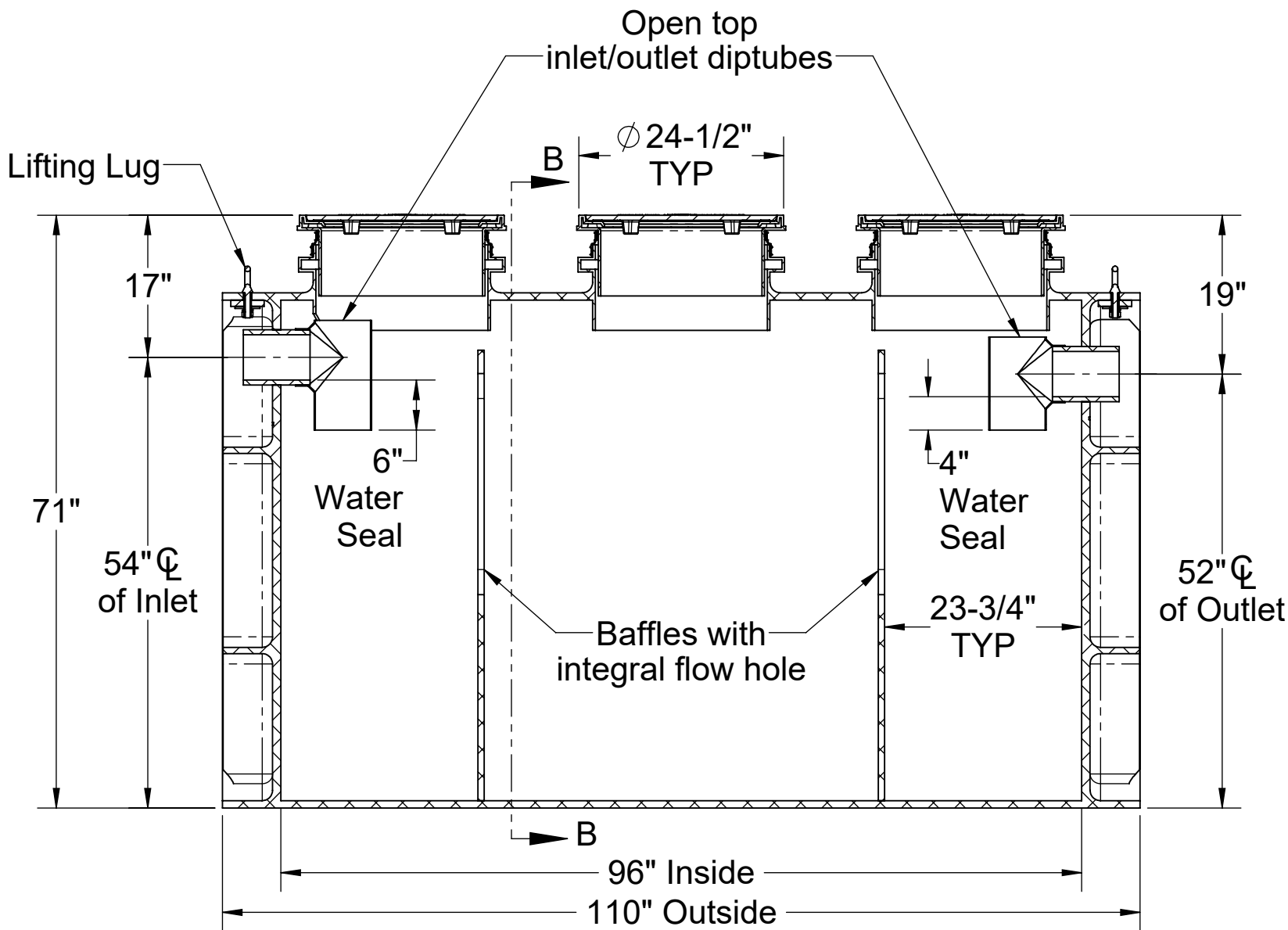
Striem solids interceptor model CB-1000-SFL shall be lifetime guaranteed and made in the USA. Interceptor shall be constructed of polyethylene with 7/8" nominal wall thickness. Interceptor shall be manufactured for below-grade installation. Field-adjustable riser system is available as an option to bring manhole covers to grade. Interceptor liquid holding capacity shall be 1000 gallons and solids capacity shall be 880 gallons. Covers shall be H20 rated pickable cast iron.



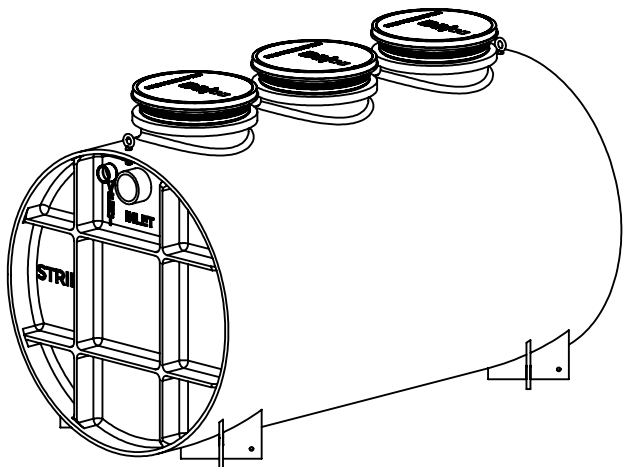
TOP VIEW



SECTION B-B



SECTION A-A



PO IS NON-CANCELABLE
ORDER IS NON-RETURNABLE

PROPRIETARY AND CONFIDENTIAL
THE INFORMATION CONTAINED IN THIS DRAWING IS THE SOLE PROPERTY OF STRIEM, LLC.
ANY REPRODUCTION IN PART OR AS A WHOLE WITHOUT THE WRITTEN PERMISSION OF STRIEM, LLC. IS PROHIBITED.

OPTIONS

Connection Types (Plain End Only)

Inlet

☐ 4" **SELECTION REQUIRED**

☐ 6"

Riser Options

From Factory: 0" - 5"

☐ Up to 24": **SR24** (3)

☐ Up to 39": **LR24** (3)

☐ Up to 43": **SR24** (6)

☐ Up to 58": **SR24** (3) + **LR24** (3)

☐ Up to 72": **LR24** (6)

☐ Up to 90": **SR24** (3) + **LR24** (6)

☐ Up to 106": **LR24** (9)

- OR -

☐ **CPRK** (3): 11" - 106" (See specification for more detail.)

Additional Options

☐ **C24-M** (3): 2,000 lbs. Rated Bolted Composite Covers

☐ **HDK-5**: High Water Table Hold Down Kit

SPECIFICATION SHEET

MODEL NUMBER: CB-1000-SFL

DESCRIPTION:

POLYETHYLENE CATCH BASIN
WITH H20 RATED PICKABLE CAST IRON COVERS

DWG BY: ENG DATE: 9/15/2025 REV: 1

Striem
Kansas City, KS
Tel: 913-222-1500
orders@striemco.com
www.striemco.com

Made in the U.S.A

