

SPECIFICATIONS

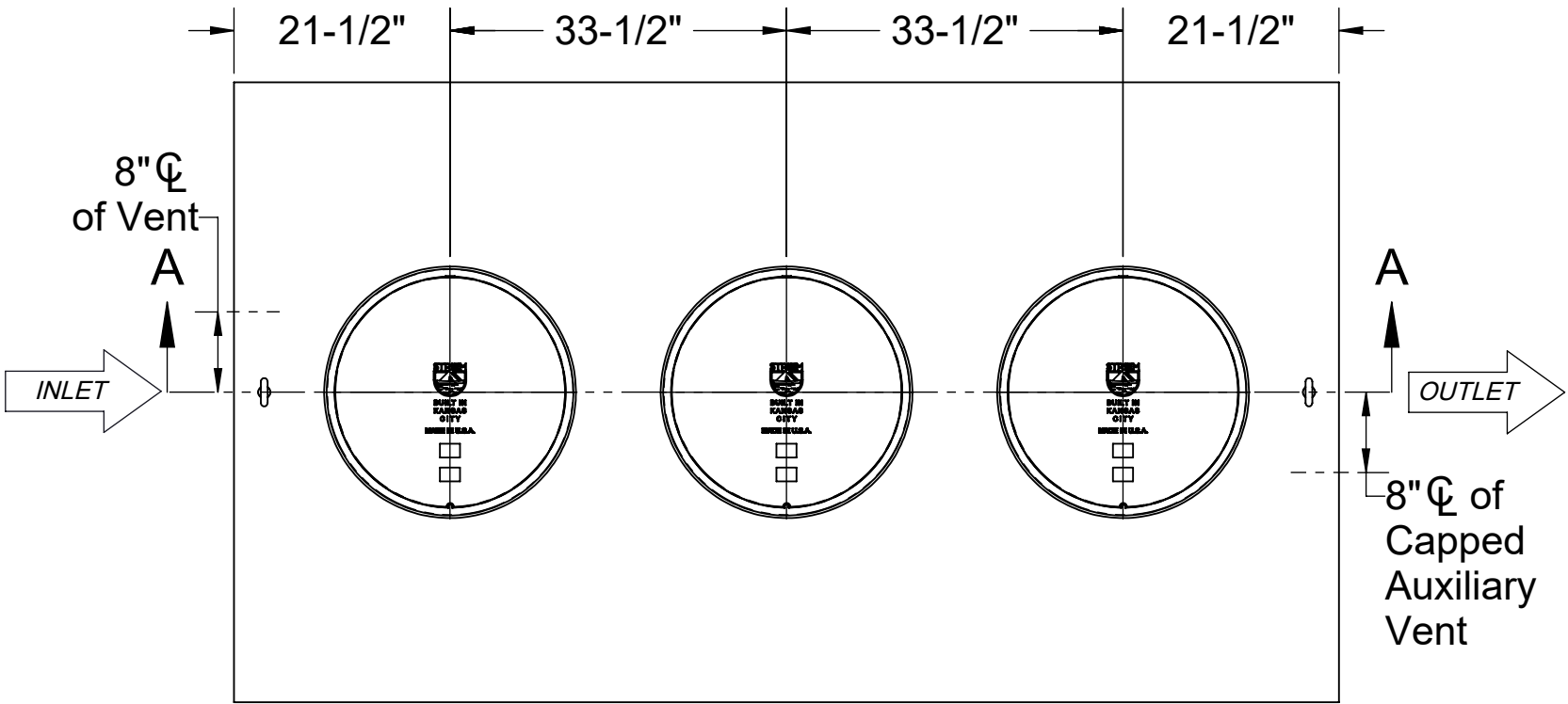
- 1. 6" Plain End inlet/outlet shown, 3" Plain End vents, C24-HP covers standard.
- 2. Liquid capacity: 1000 gallons (133 cu. ft.).
- 3. Flammable liquid capacity: 370 gallons.
- 4. Solids capacity: 477 gallons.
- 5. Unit weight w/ standard covers: 1324 lbs.
- 6. Maximum operating temperature 140°F continuous.

NOTES

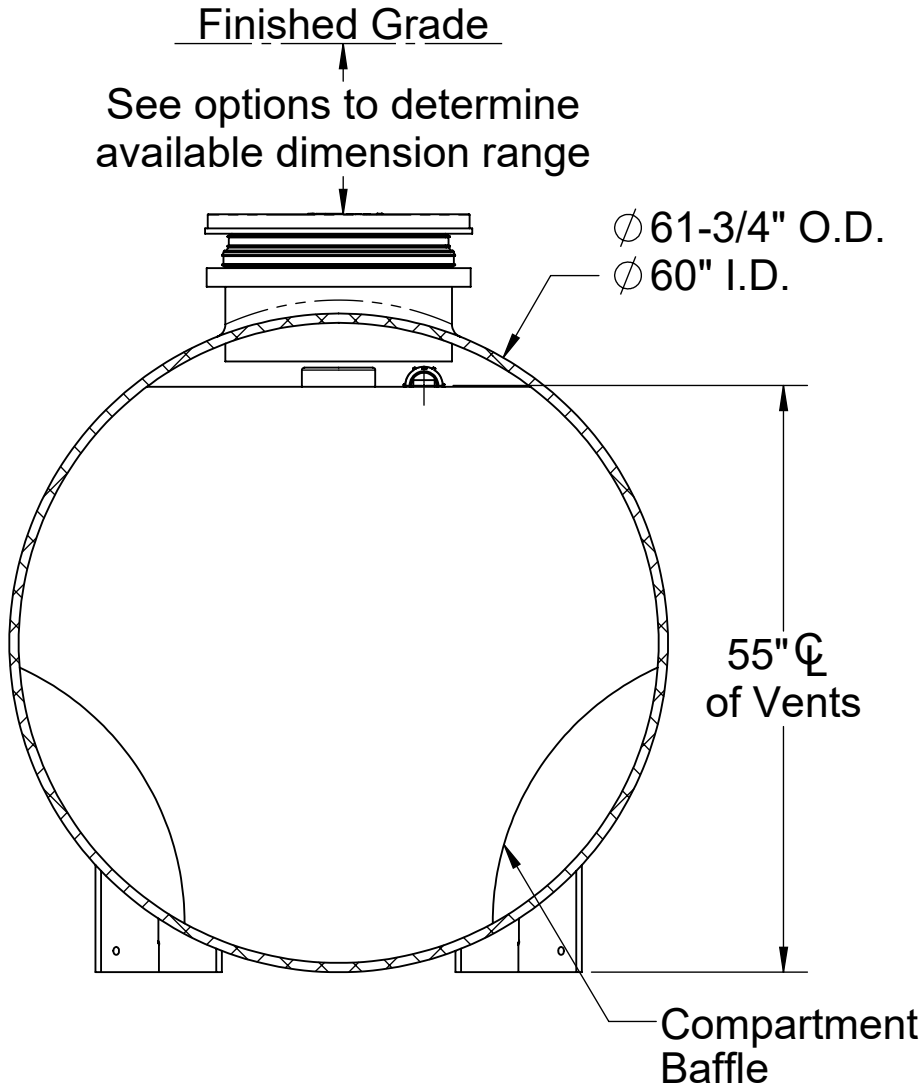
- 1. For gravity drainage applications only.
- 2. Do not use for pressure applications
- 3. Capped auxiliary vent provided to allow flexibility with vent piping and design. Provided cap can be moved to unused vent location, or discarded if two chamber vents are required per local code.
- 4. Cover placement allows full access to tank for proper maintenance.
- 5. Lifting lug set for easy install.
- 6. Maximum burial depth: 106" from standard cover height.

ENGINEER SPECIFICATION GUIDE

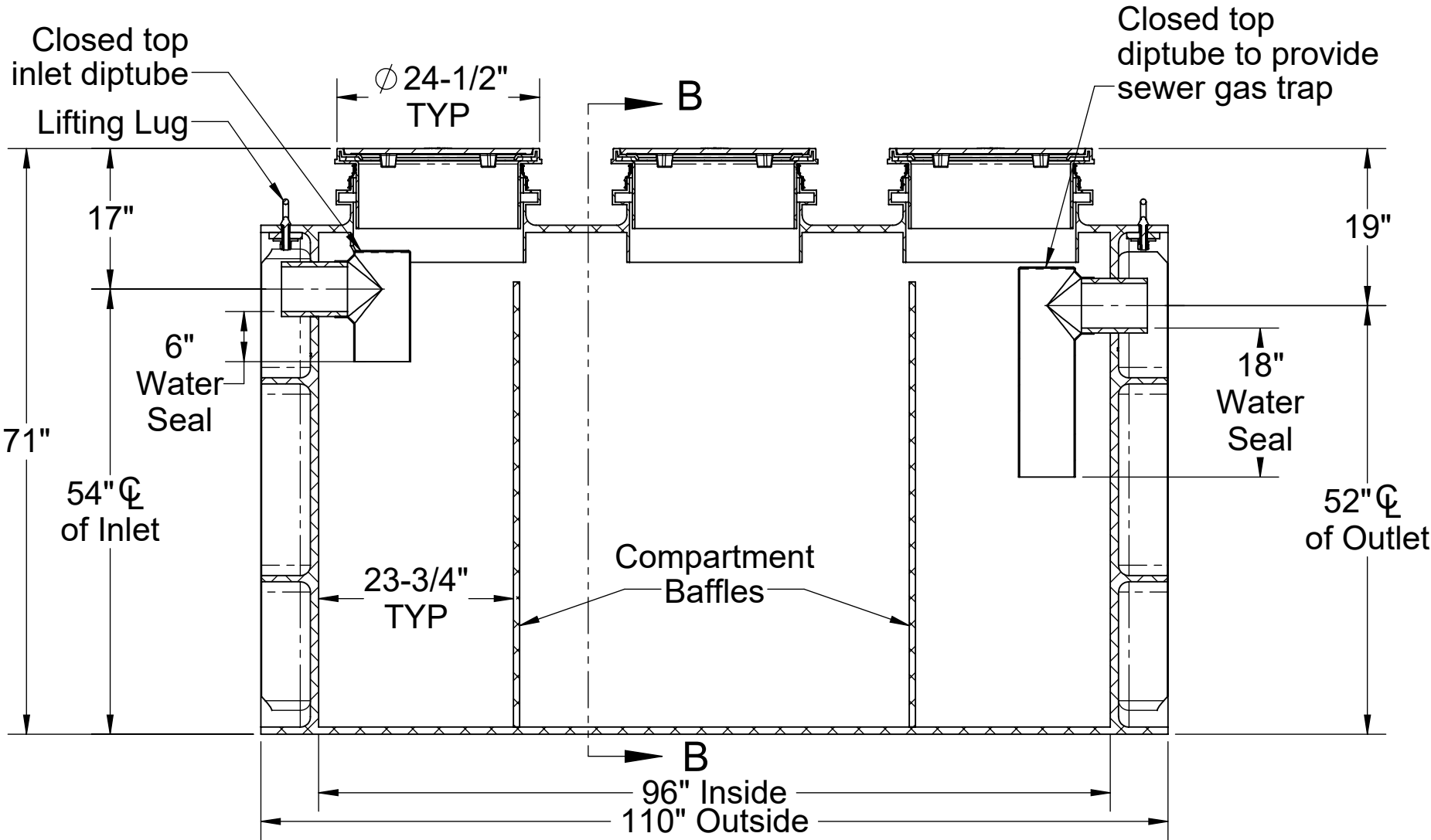
Striem flammable liquid interceptor model FLI-1000 shall be lifetime guaranteed and made in the USA. Interceptor shall be constructed of polyethylene with 7/8" nominal wall thickness. Interceptor shall be manufactured for below-grade installation. Field-adjustable riser system is available as an option to bring manhole covers to grade. Interceptor liquid holding capacity shall be 1000 gallons and flammable liquid capacity shall be 370 gallons. Solids capacity shall be 477 gallons. Covers shall be H20 rated pickable cast iron.



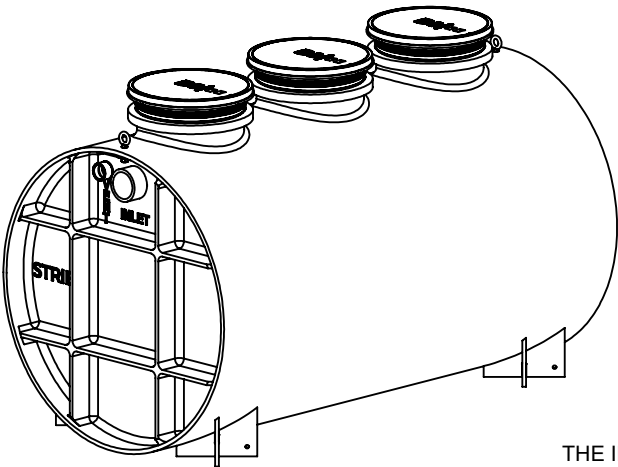
TOP VIEW



SECTION B-B



SECTION A-A



PO IS NON-CANCELABLE
ORDER IS NON-RETURNABLE

PROPRIETARY AND CONFIDENTIAL
THE INFORMATION CONTAINED IN THIS DRAWING IS THE SOLE PROPERTY OF STRIEM, LLC.
ANY REPRODUCTION IN PART OR AS A WHOLE WITHOUT THE WRITTEN PERMISSION OF STRIEM, LLC. IS PROHIBITED.

OPTIONS

Connection Options (Plain End Only)

- Size
- ☐ 4"
- ☐ 6"
- ☐ 8"

SELECTION
REQUIRED

Riser Options

From Factory: Up to 5"

- ☐ Up to 24": SR24 (3)
- ☐ Up to 39": LR24 (3)
- ☐ Up to 43": SR24 (6)
- ☐ Up to 58": SR24 (3) + LR24 (3)
- ☐ Up to 72": LR24 (6)
- ☐ Up to 90": SR24 (3) + LR24 (6)
- ☐ Up to 106": LR24 (9)

- OR -

- ☐ CPRK (3): 11" - 106" (See specification for more detail.)

Additional Options

- ☐ C24-M (3): 2,000 lbs. Rated Bolted Composite Covers
- ☐ HDK-5: High Water Table Hold Down Kit
- ☐ SS: Slick Stick™ Oil Level Monitoring System*

*Monitoring system will raise covers by 3".

MODEL NUMBER: FLI-1000

DESCRIPTION:
POLYETHYLENE
FLAMMABLE LIQUID INTERCEPTOR
1000 GALLON CAPACITY
UNRATED

DWG BY: ENG DATE: 9/16/2025 REV: 2

SPECIFICATION SHEET

Striem
Kansas City, KS
Tel: 913-222-1500
orders@striemco.com
www.striemco.com

Made in the U.S.A

