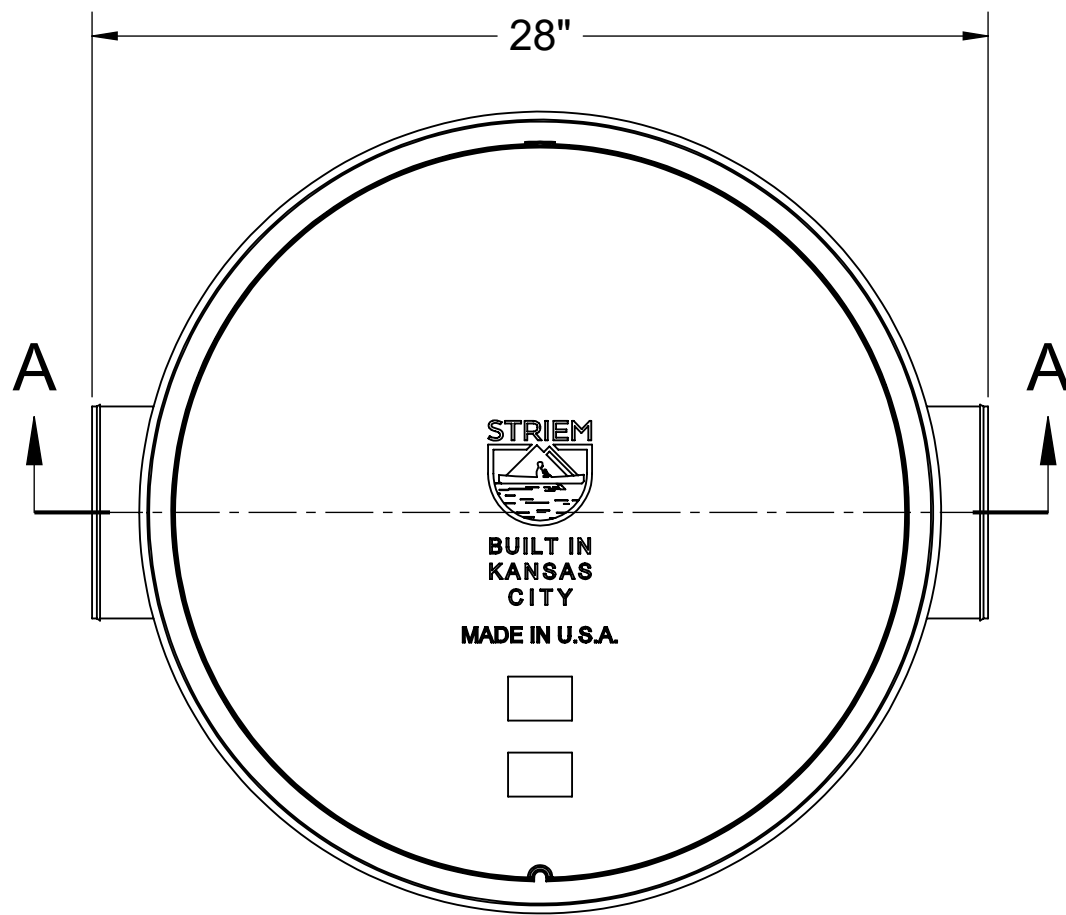


SPECIFICATIONS

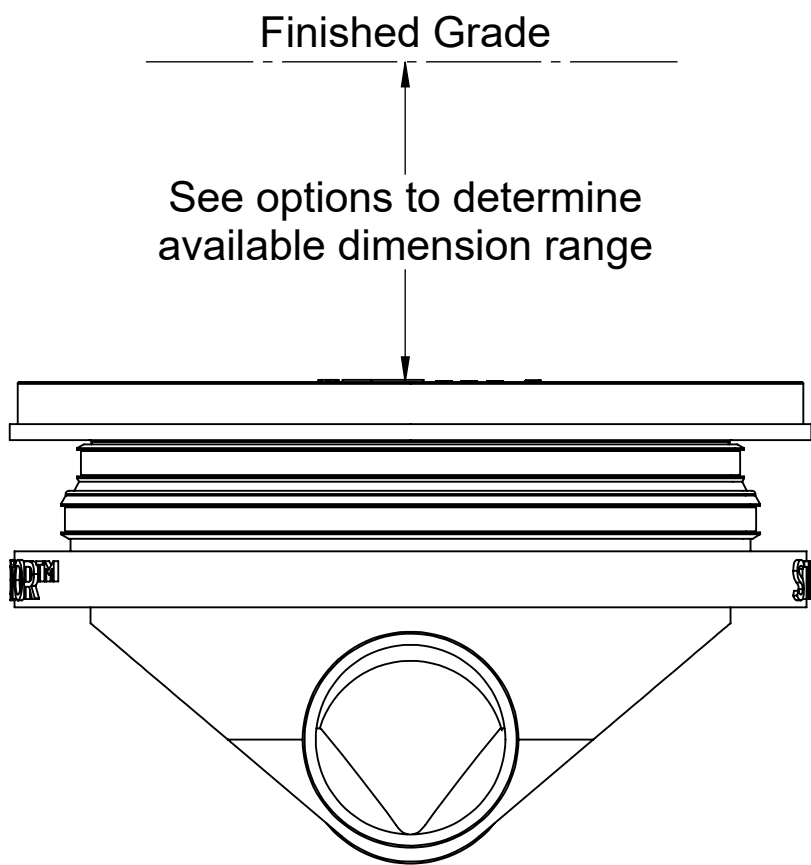
- 1. 6" Plain End inlet/outlet, C24-HP cover standard.
- 2. Unit weight w/ standard cover: 105 lbs.
- 3. Maximum operating temperature 140 F continuous.
- 4. Maximum burial depth: 106" from standard cover height.

ENGINEER'S SPECIFICATION GUIDE

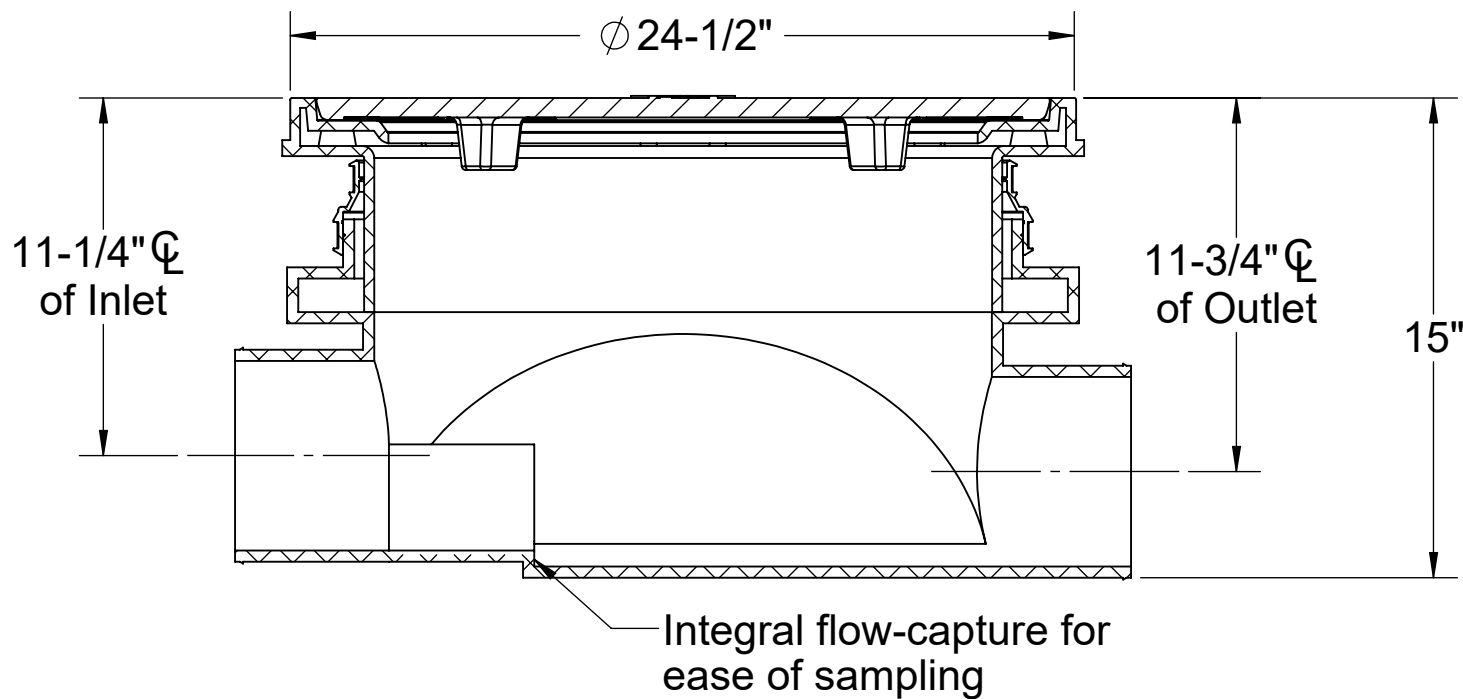
Striem sampling port model INSPECTOR-6 shall be lifetime guaranteed and made in the USA. Sampling port shall be constructed of polyethylene. Sampling port shall be manufactured for above- or below-grade installation. Sampling port shall provide integral flow-capture feature for ease of sampling. Field-adjustable riser system is available as an option to bring manhole cover to grade. Cover shall be H20 pickable cast iron.



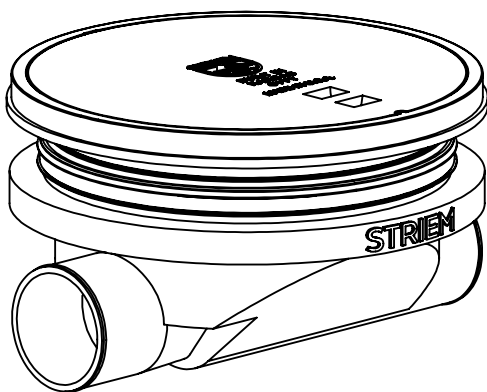
TOP VIEW



END VIEW



SECTION A-A



PROPRIETARY AND CONFIDENTIAL  
THE INFORMATION CONTAINED IN THIS DRAWING IS THE SOLE PROPERTY OF STRIEM, LLC.  
ANY REPRODUCTION IN PART OR AS A WHOLE WITHOUT THE WRITTEN PERMISSION OF STRIEM, LLC. IS PROHIBITED.

OPTIONS

Riser Options

- From Factory: Up to 5"
- ☐ Up to 24": **SR24**
  - ☐ Up to 39": **LR24**
  - ☐ Up to 43": **SR24 (2)**
  - ☐ Up to 58": **SR24 + LR24**
  - ☐ Up to 72": **LR24 (2)**
  - ☐ Up to 90": **SR24 + LR24 (2)**
  - ☐ Up to 106": **LR24 (3)**

- OR -

- ☐ **CPRK:** 11" - 106" (See specification for more detail.)

Additional Options

- ☐ **C24-M:** 2,000 lbs. Rated Bolted Composite Cover

SPECIFICATION SHEET

MODEL NUMBER: INSPECTOR-6

DESCRIPTION:

POLYETHYLENE WASTEWATER SAMPLING PORT

Striem  
Kansas City, KS  
Tel: 913-222-1500  
orders@striemco.com  
www.striemco.com

Made in the U.S.A



DWG BY: ENG

DATE: 9/16/2025

REV: 2