

SPECIFICATIONS

- 1. 1-1/2" or 2" FPT connections standard (polypropylene bushings included).
- 2. 3" gasketed top access port.
- 3. Liquid capacity: 2 Gallons (1-1/2"); 1.8 Gallons (2").
- 4. Unit weight: 6 lbs. (dry); 23 lbs. (wet); 36 lbs. (wet w/ limestone).
- 5. Maximum operating temperature 140°F continuous.

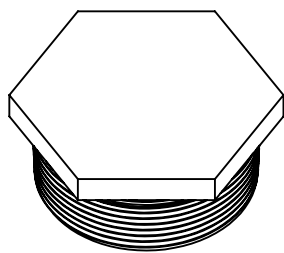
NOTES

- 1. Top inlet and side inlet options standard.
- 2. Built-in sewer gas trap.
- 3. Bottom of tank must be supported if not sitting on floor. Support must hold at least 50 lbs.
- 4. Uses: Neutralization (w/ limestone) or dilution (no limestone).

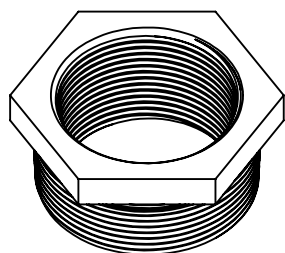
ENGINEER SPECIFICATION GUIDE

Striem neutralization tank model LB-2-ADA shall be lifetime guaranteed and made in the USA. Tank shall be constructed of polyethylene. Tank shall be manufactured for above-grade installation. Tank shall be furnished with (2) inlets and (1) outlet connection with bushings included to field-adapt to 1-1/2" or 2" drain line pipe size. Tank shall be watertight up to 36" head and contain an internal sewer gas trap. Tank shall have gasketed cover.

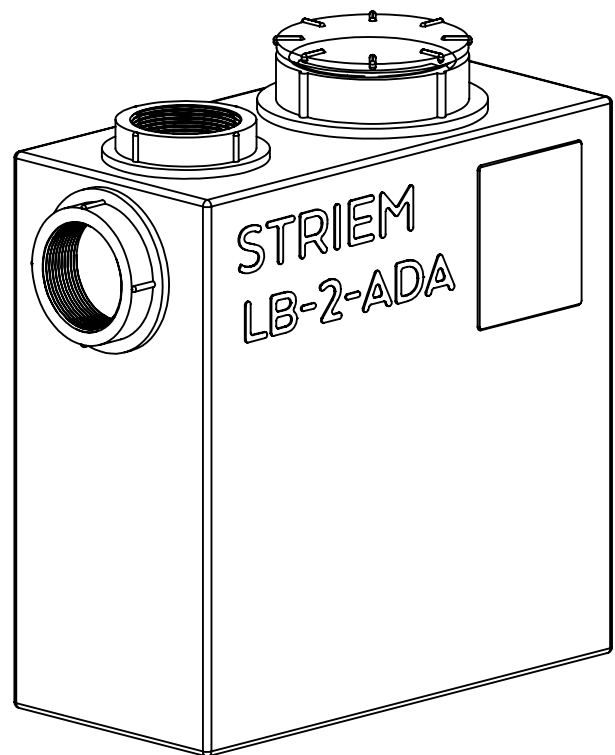
INCLUDED



2" MPT Plug

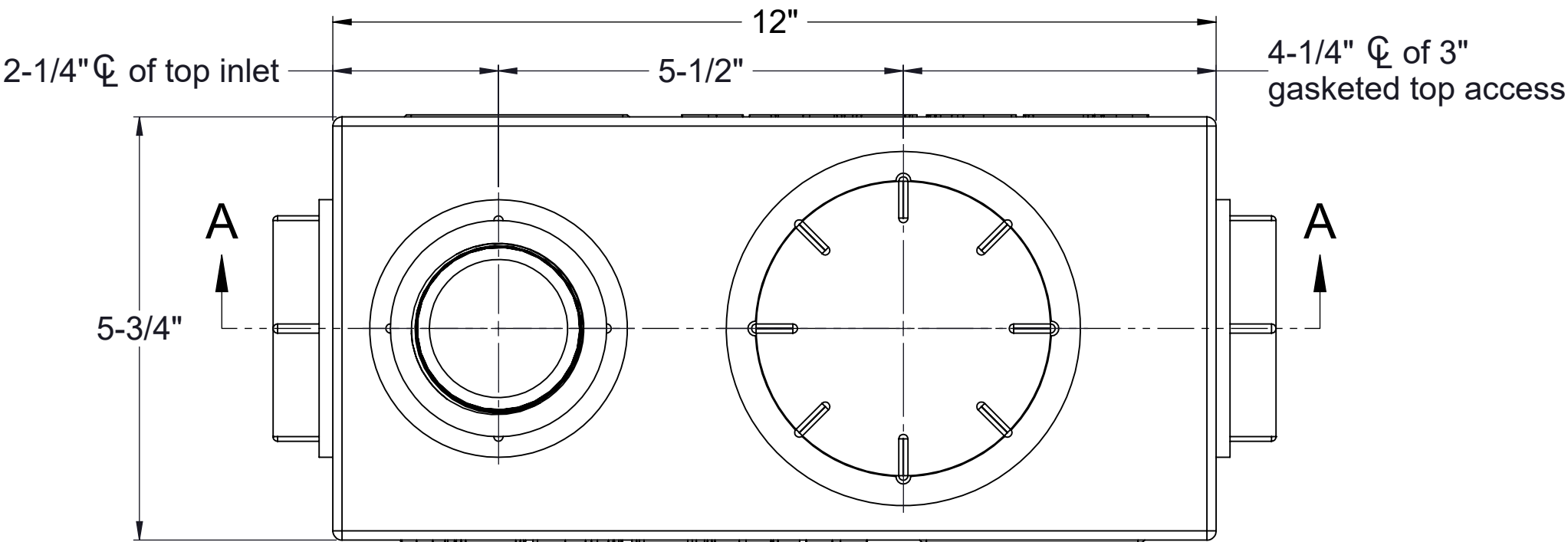


2" x 1-1/2" MPT Reducer (2)

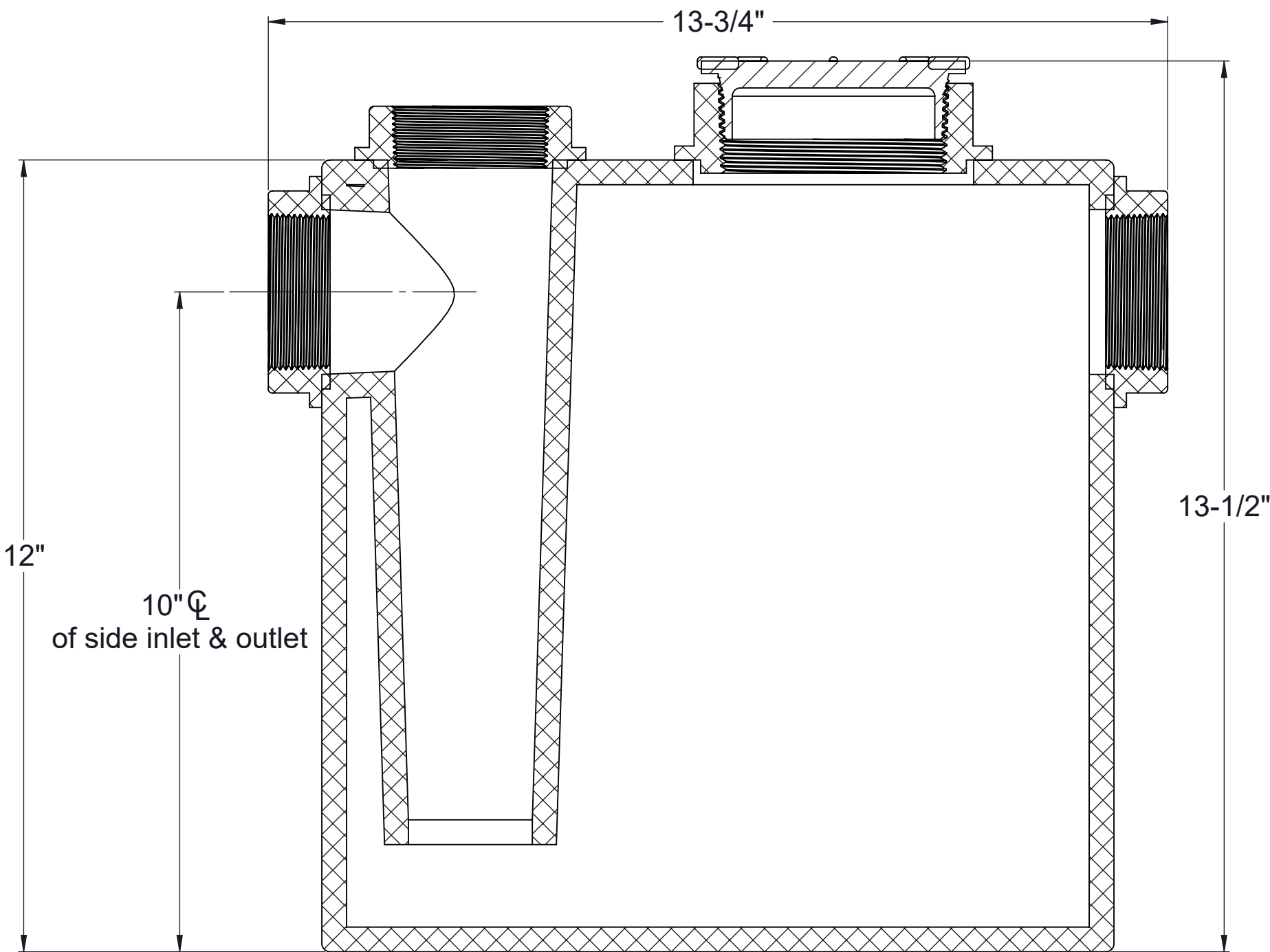


OPTIONS

☐ Limestone: 90%+ Calcium Carbonate (50 lbs.)



TOP VIEW



SECTION A-A

MODEL NUMBER: LB-2-ADA

DESCRIPTION:

LAB RAT™
POLYETHYLENE POINT OF USE
NEUTRALIZATION TANK FOR ADA SINK

DWG BY: ENG DATE: 9/29/2025 REV: 0

SPECIFICATION SHEET

Striem
Kansas City, KS
Tel: 913-222-1500
orders@striemco.com
www.striemco.com

Made in the U.S.A

