

SPECIFICATIONS

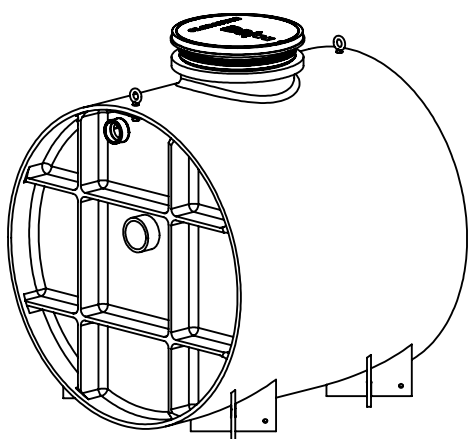
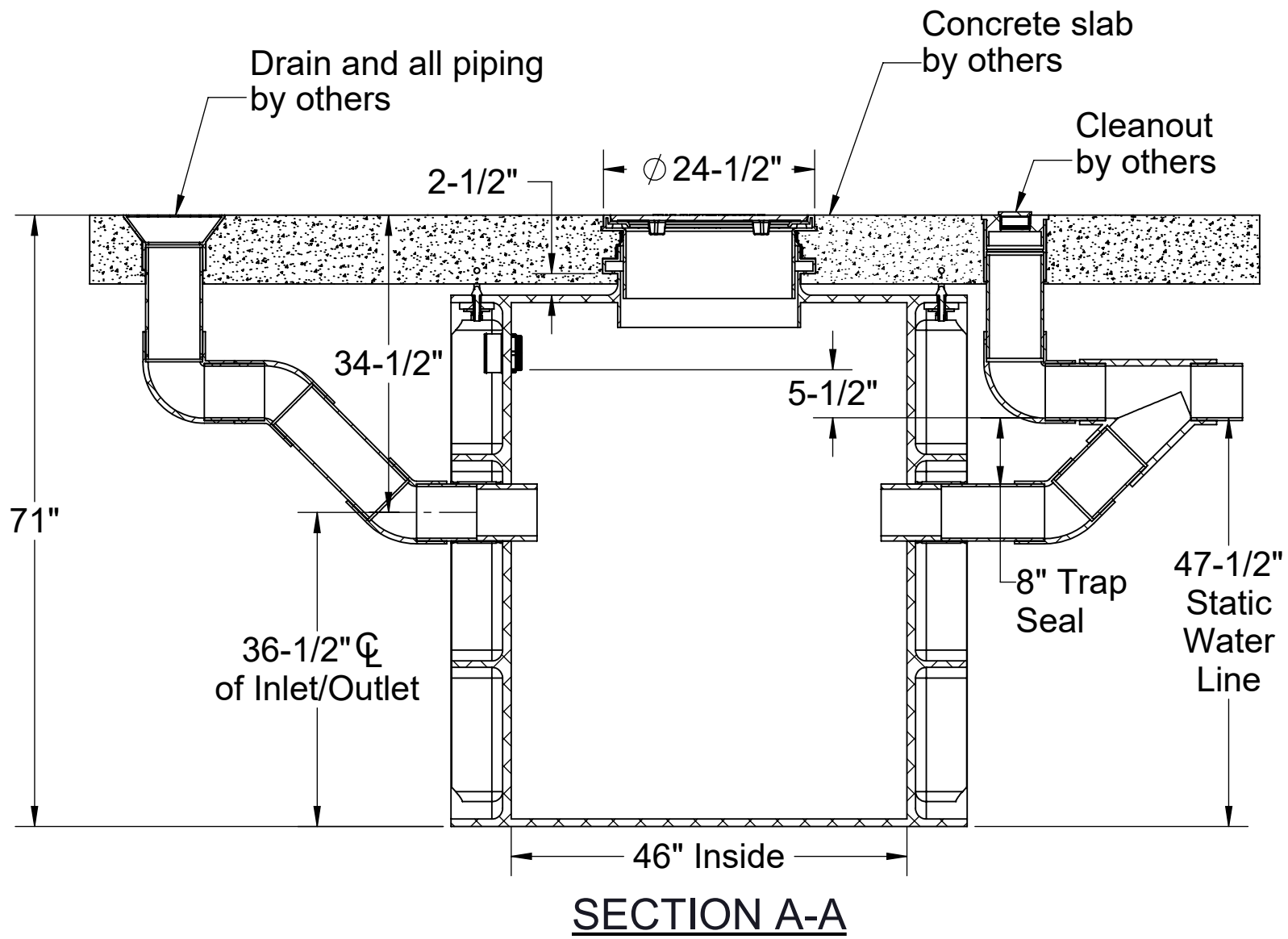
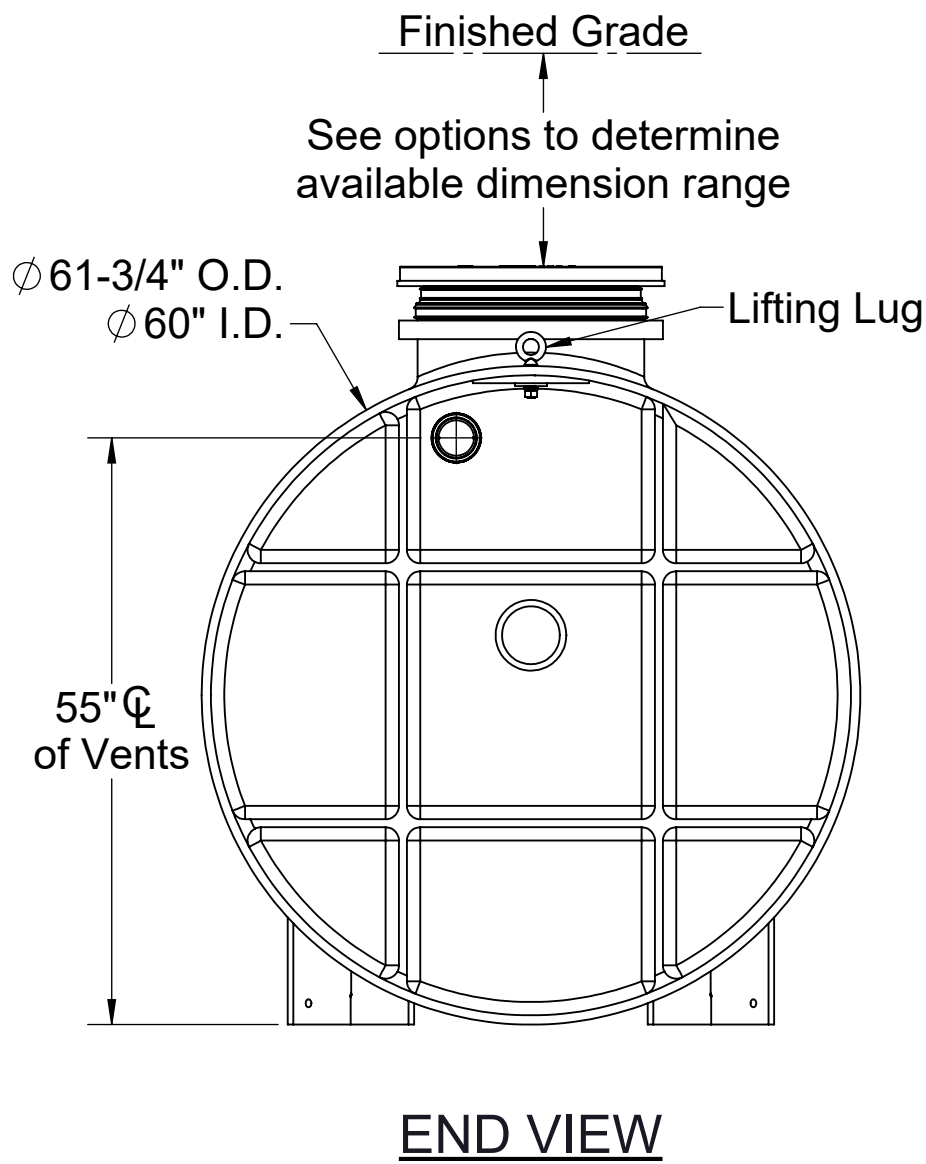
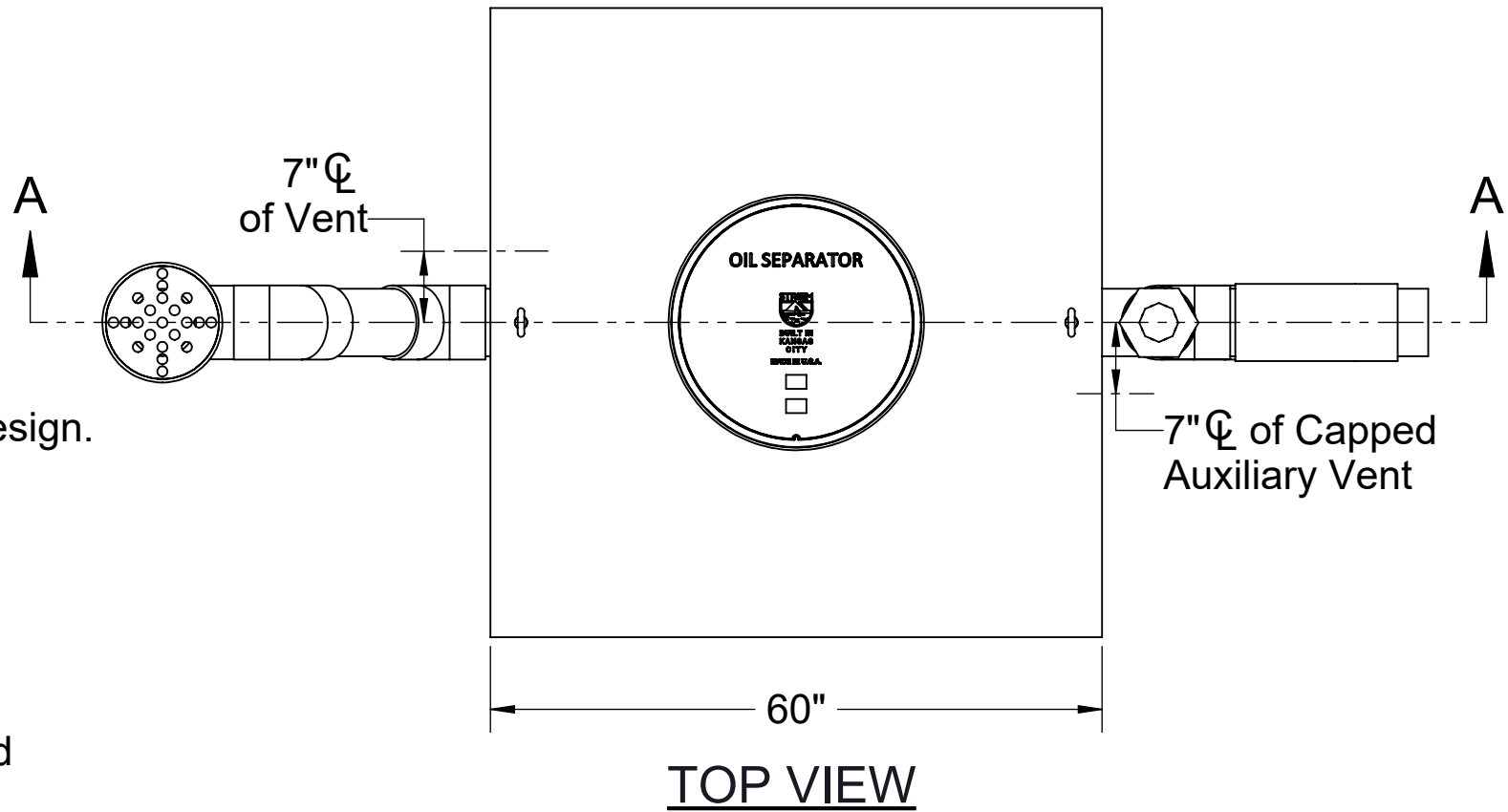
- 1. 6" Plain End inlet/outlet shown, 4" Plain End vents, C24-HP cover standard.
- 2. Max flow rate: 314 GPM.
- 3. Liquid capacity: 475 gallons (63.5 cu. ft.).
- 4. Oil capacity: 86 gallons.
- 5. Solids capacity: 320 gallons.
- 6. Unit weight w/ standard cover: 845 lbs.
- 7. Maximum operating temperature: 140°F continuous.

NOTES

- 1. For gravity drainage applications only.
- 2. Do not use for pressure applications.
- 3. Capped auxiliary vent provided to allow flexibility with vent piping and design. Provided cap can be moved to unused vent location, or discarded if two chamber vents are required per local code.
- 4. Cover placement allows full access to tank for proper maintenance.
- 5. Lifting lug set for easy install.
- 6. Maximum burial depth: 106" from standard cover height.

ENGINEER SPECIFICATION GUIDE

Striem oil separator model OS-500-OMAHA shall be lifetime guaranteed and made in the USA. Separator shall be constructed of polyethylene with 7/8" nominal wall thickness. Separator shall be manufactured for below-grade installation. Field-adjustable riser system is available as an option to bring manhole cover to grade. Separator flow rate shall be 314 GPM. Separator liquid holding capacity shall be 475 gallons and oil capacity shall be 86 gallons. Solids capacity shall be 320 gallons. Cover shall be H20 rated pickable cast iron.



PO IS NON-CANCELABLE
ORDER IS NON-RETURNABLE

PROPRIETARY AND CONFIDENTIAL
THE INFORMATION CONTAINED IN THIS DRAWING IS THE SOLE PROPERTY OF STRIEM, LLC.
ANY REPRODUCTION IN PART OR AS A WHOLE WITHOUT THE WRITTEN PERMISSION OF STRIEM, LLC. IS PROHIBITED.

OPTIONS

Connection Options (Plain End Only)

Inlet / Outlet

- ☐ 4"
- ☐ 6"

SELECTION
REQUIRED

Riser Options

From Factory: Up to 5"

- ☐ Up to 24": **SR24**
- ☐ Up to 39": **LR24**
- ☐ Up to 43": **SR24 (2)**
- ☐ Up to 58": **SR24 + LR24**
- ☐ Up to 72": **LR24 (2)**
- ☐ Up to 90": **SR24 + LR24 (2)**
- ☐ Up to 106": **LR24 (3)**

- OR -

- ☐ **CPRK**: 11" - 106"
(See specification for more detail.)

Additional Options

- ☐ **HDK-8**: High Water Table Hold Down Kit
- ☐ **C24-M**: 2,000 lbs. Rated Bolted Composite Cover

MODEL NUMBER: OS-500-OMAHA

DESCRIPTION:

OMAHA TYPE 1 & 2 INTERCEPTOR

DWG BY: ENG

DATE: 9/17/2025

REV: 3

SPECIFICATION SHEET

Striem
Kansas City, KS
Tel: 913-222-1500
orders@striemco.com
www.striemco.com

Made in the U.S.A

