

SPECIFICATIONS

- 1. 4" Plain End outlet.
- 2. 1/8" per foot built-in slope.
- 3. Liquid Capacity: 40 Gallons.
- 4. Unit Weight: 76 lbs.
- 5. Maximum operating temperature 165°F intermittent.

NOTES

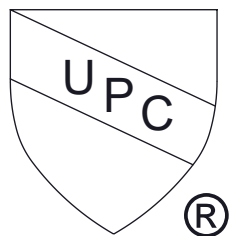
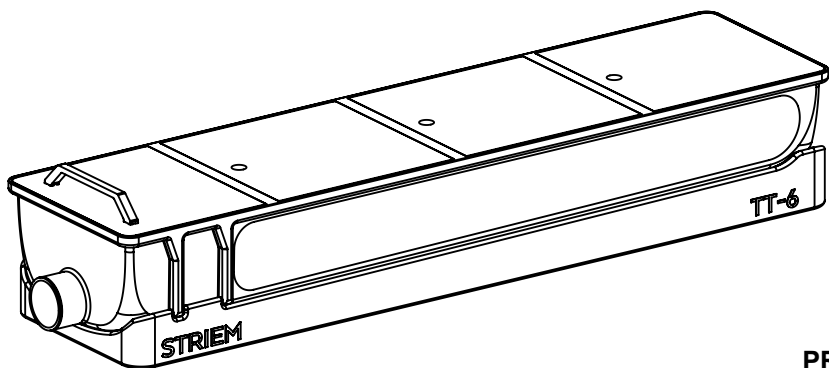
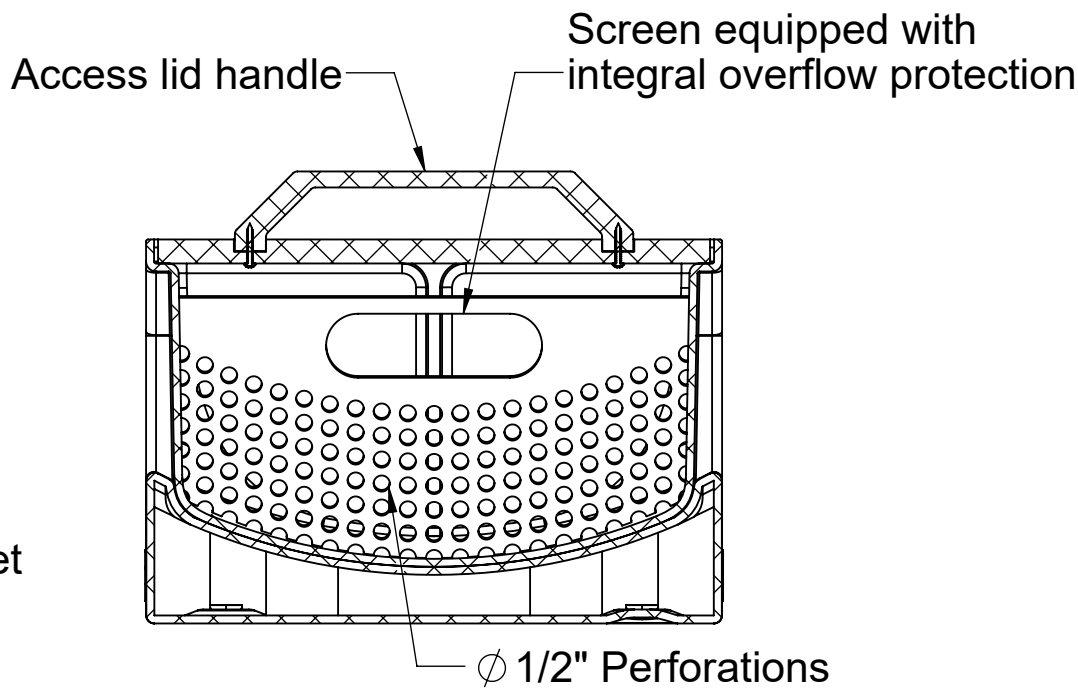
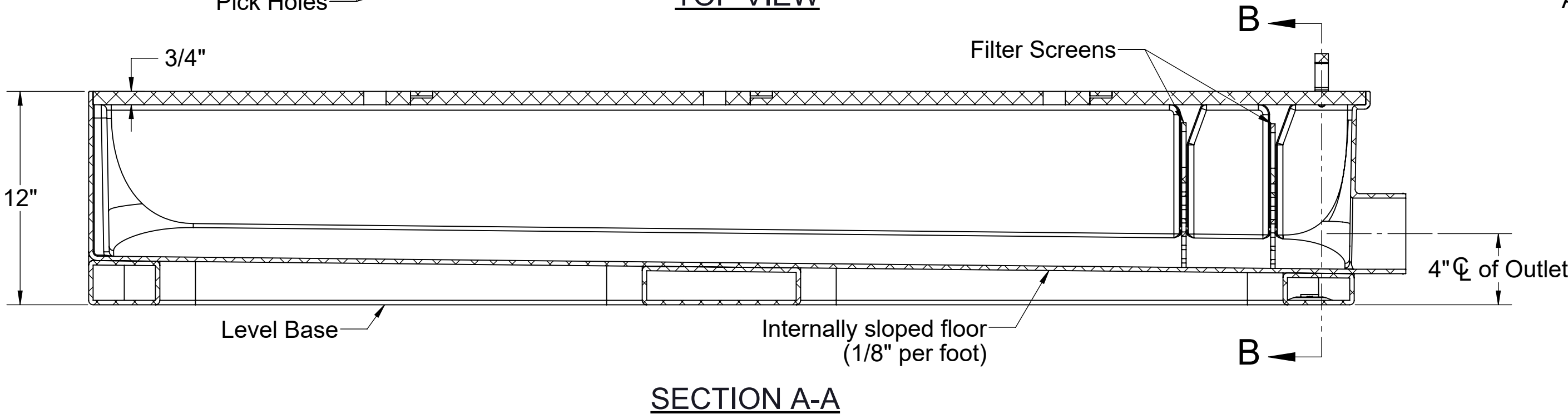
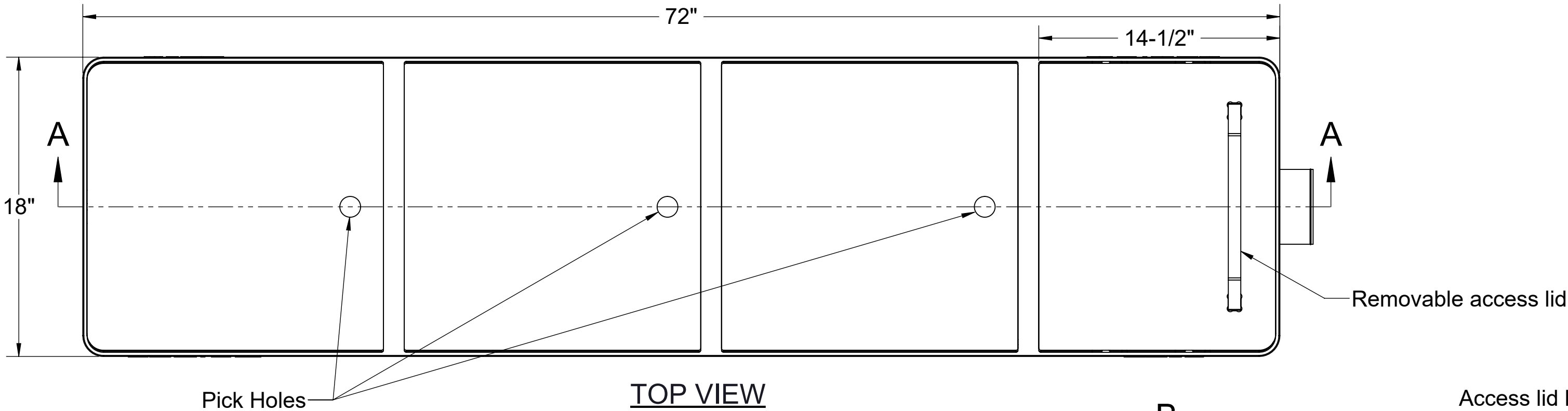
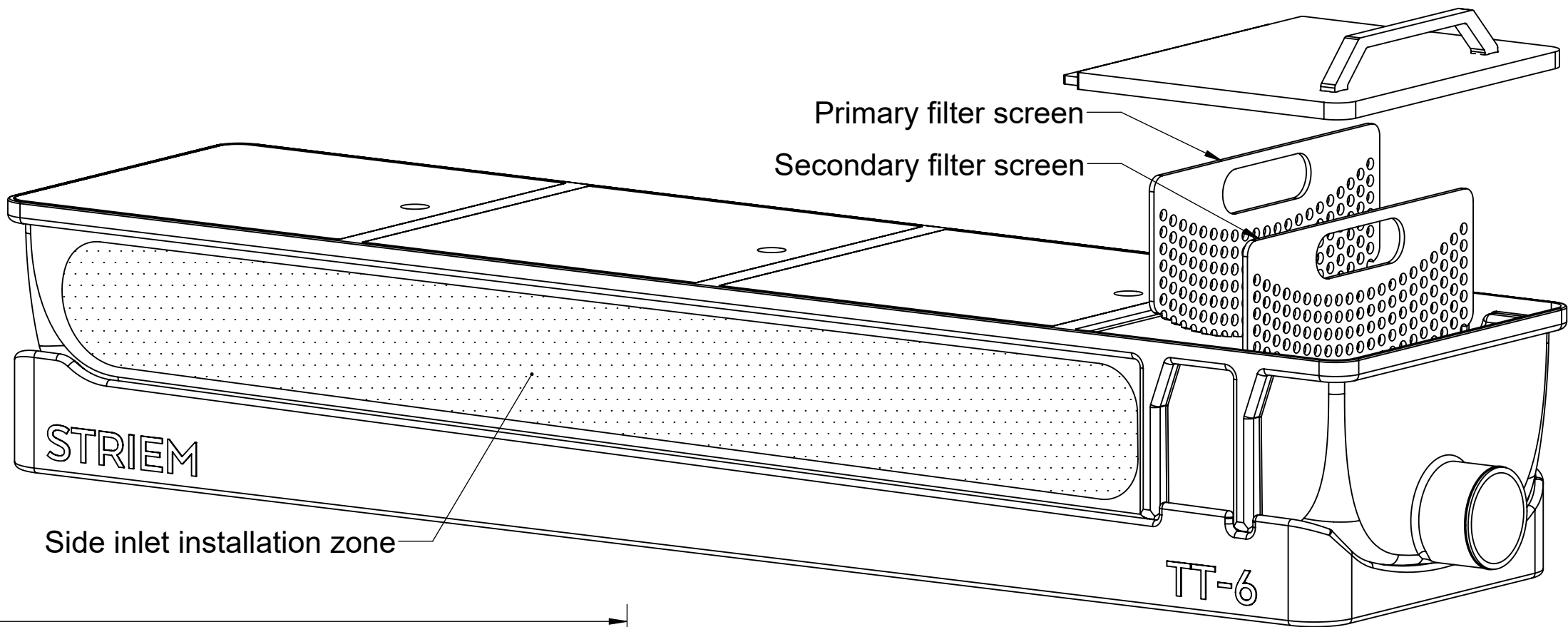
- 1. All inlet connections are field installed.
- 2. Filter screens equipped with  $\varnothing$  1/2" perforations.

ENGINEER SPECIFICATION GUIDE

Striem Tuff Trough model TT-6 shall be lifetime guaranteed and made in the USA. Trough shall be constructed of polyethylene with 1/4" nominal wall thickness. Trough shall have removable, corrosion-resistant primary filter screen and secondary filter screen. Trough shall be furnished with a nested cover, internally sloped floor, and suitable for above- or below-grade installation. Trough shall be equipped with a plain end molded-in outlet. Inlet connections are field installed. Maximum operating temperature 165°F intermittent. Trough shall be certified to IAPMO/ANSI/CAN Z1167 and carry a UPC listing.

OPTIONS

☐ IG-3: 3" Inlet Grommet QTY: \_\_\_\_\_



PO IS NON-CANCELABLE  
ORDER IS NON-RETURNABLE

PROPRIETARY AND CONFIDENTIAL  
THE INFORMATION CONTAINED IN THIS DRAWING IS THE SOLE PROPERTY OF STRIEM, LLC.  
ANY REPRODUCTION IN PART OR AS A WHOLE WITHOUT THE WRITTEN PERMISSION OF STRIEM, LLC. IS PROHIBITED.

MODEL NUMBER: TT-6

DESCRIPTION:

TUFF TROUGH  
POLYETHYLENE DRAIN TROUGH  
40 GALLON CAPACITY

DWG BY: ENG

DATE: 1/14/2026

REV: 0

SPECIFICATION SHEET

Striem  
Kansas City, KS  
Tel: 913-222-1500  
orders@striemco.com  
www.striemco.com

Made in the U.S.A

